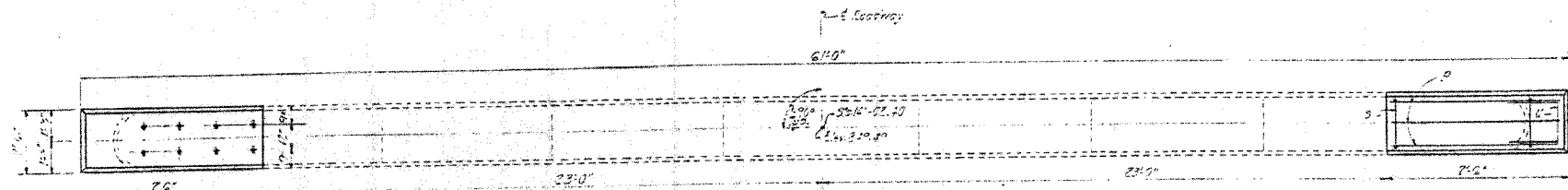


F.A.P. RTE.	SECTION	COUNTY	TOTAL SHEETS	SHEET NO.
567	34X-BR	DEKALB	90	55
STA.		TO STA.		
FED. ROAD DIST. NO.		ILLINOIS FED. AID PROJECT		

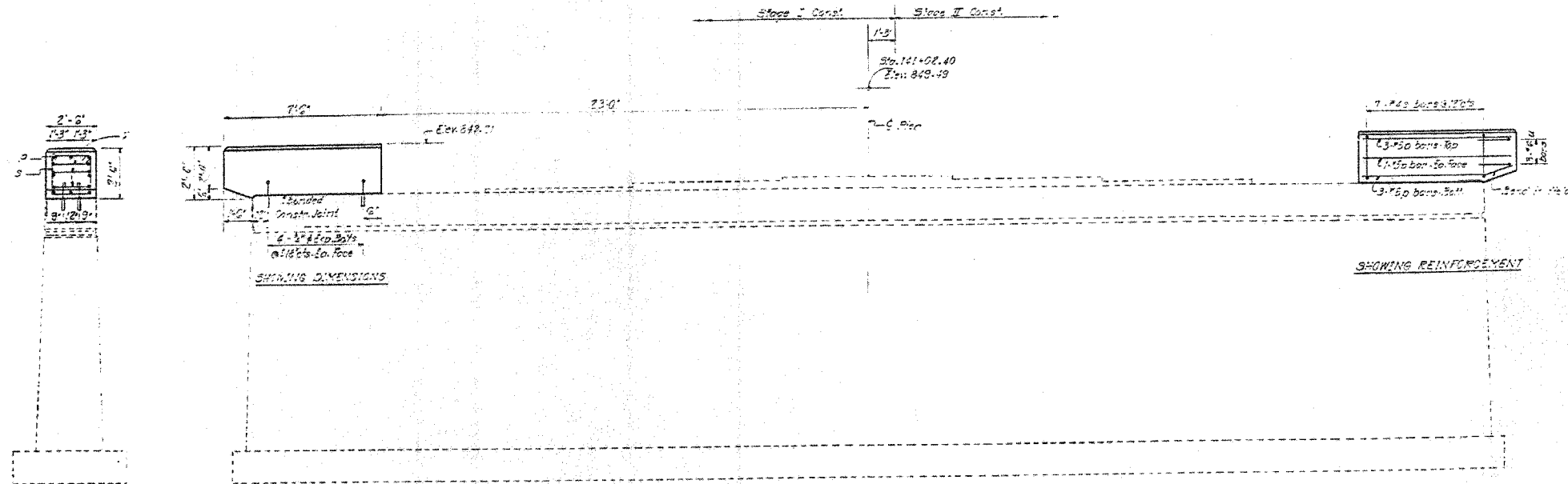
STATE OF ILLINOIS
DEPARTMENT OF TRANSPORTATION

DATE	DESCRIPTION	BY	NO.
2-27-77	411 BR DeKalb	15	13

SHEET NO. 9
9 SHEETS



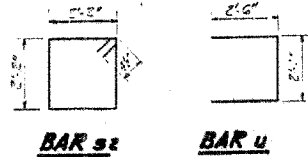
TOP PLAN



ELEVATION
(Looking East)

END VIEW

Notes:
Expansion bolts shall be anchored in sound concrete.
All edges shall have standard reinforcement unless otherwise noted.



BILL OF MATERIAL

Bar	No.	Size	Length	Sh. Co.
p	16	#5	7'-9"	
st	16	#4	8'-3"	1
u	6	#2	7'-1"	
Class of Concrete		Con. 4	3.0	
Reinforcement Bars		4	2.28	
Expansion Bolt (3/8")		Each	1.0	

PIER
F.A.R.T. 567 SEC. 34-X-BY
DEKALB COUNTY
STA. 141+02.40

DESIGNED	March 20 1977
CHECKED	Carl E. Thompson
DRAWN	S.U.
CHECKED	J.L.G.

FOR INFORMATION ONLY

PLOT DATE = 04/05/77
FILE NAME = 515151
PLOT SCALE = 1/8"=1'-0"
SOURCE = 11/27/77
OPERATOR = MDS

REVISIONS	
NAME	DATE

ILLINOIS DEPARTMENT OF TRANSPORTATION
EXISTING BRIDGE PLANS

FAP RTE 567 (IL RTE 38)
SECTION 34X-BR
DEKALB COUNTY

SCALE: VERT. DRAWN BY SUTHEARD
 HORIZ. CHECKED BY BOTT
DATE 2/24/06

GREENE & BRADFORD, INC.
OF SPRINGFIELD
CONSULTING ENGINEERS
PROFESSIONAL ENGINEERS
PROFESSIONAL SURVEYORS
PROFESSIONAL LAND SURVEYORS
PROFESSIONAL ARCHITECTS

COMPUTER FILE NO.
D10800EPLN
PROJECT 05198
2/27/06-MDS

EXISTING BRIDGE PLANS