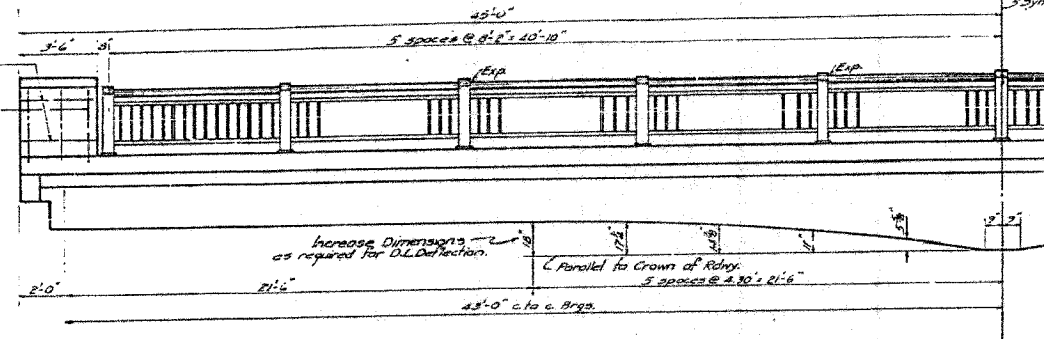
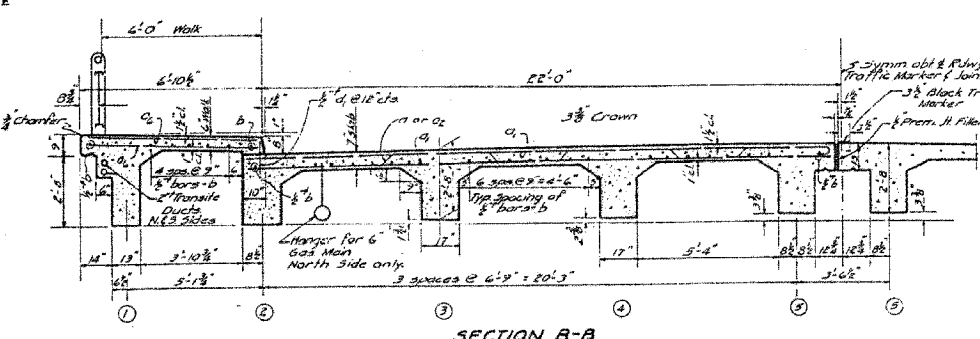


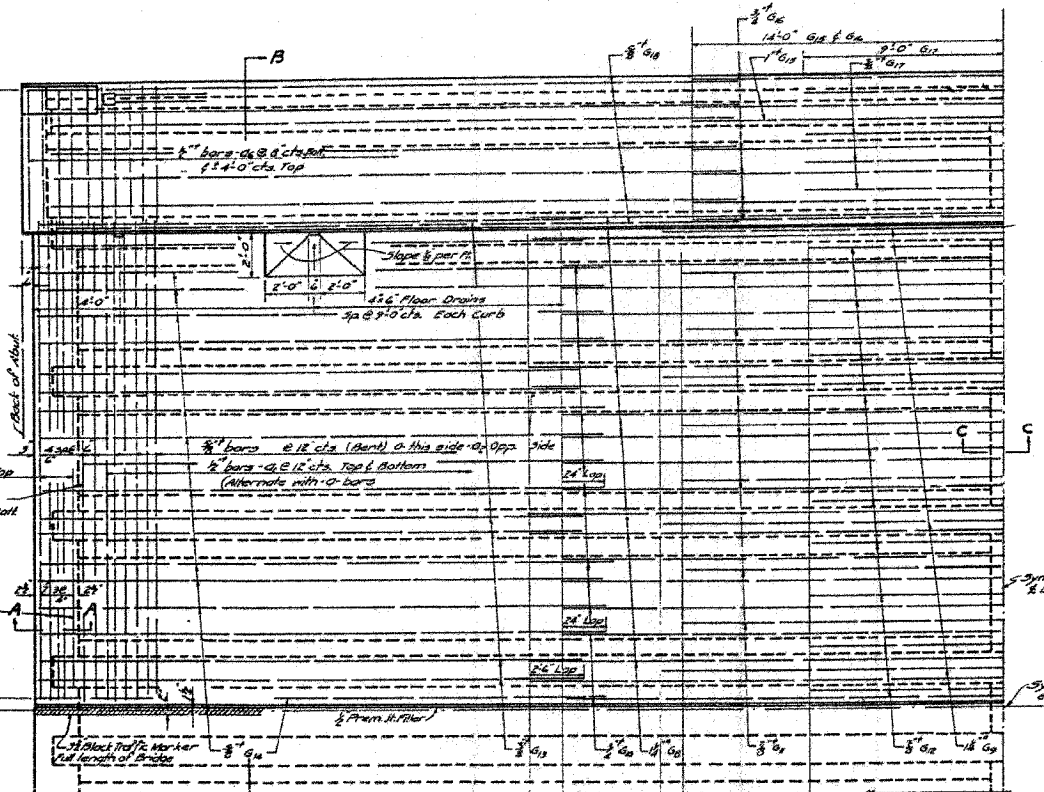
F.A.P. R.T.E. NO.	SECTION	COUNTY	TOTAL SHEETS	SHEET NO.
567	34X-BR	DEKALB	90	58
STA.	TO STA.			
FED. ROAD DIST. NO.	ILLINOIS	FED. AID PROJECT		



HALF ELEVATION

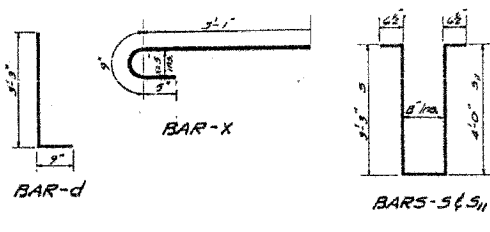


SECTION B-B



PART PLAN

NOTE: Transite Ducts shall be 2" clear from surfaces of concrete and 2" clear between ducts.

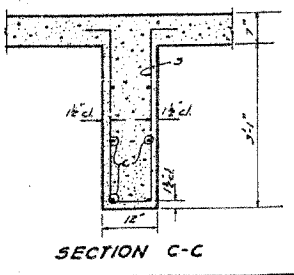


DETAIL OF SLAB AT N.W. CORNER

BILL OF MATERIAL — SUPERSTRUCTURE

BAR NO.	SIZE	LENGTH	SHAPE	BAR NO.	SIZE	LENGTH	SHAPE
Q1	3/4"	24'-0"	U	G1	3/4"	18'-0"	C
Q2	3/4"	22'-9"	U	G2	3/4"	18'-0"	C
Q3	3/4"	22'-9"	U	G3	3/4"	18'-0"	C
Q4	3/4"	22'-9"	U	G4	3/4"	18'-0"	C
Q5	3/4"	22'-9"	U	G5	3/4"	18'-0"	C
Q6	3/4"	22'-9"	U	G6	3/4"	18'-0"	C
Q7	3/4"	22'-9"	U	G7	3/4"	18'-0"	C
Q8	3/4"	22'-9"	U	G8	3/4"	18'-0"	C
Q9	3/4"	22'-9"	U	G9	3/4"	18'-0"	C
Q10	3/4"	22'-9"	U	G10	3/4"	18'-0"	C
Q11	3/4"	22'-9"	U	G11	3/4"	18'-0"	C
Q12	3/4"	22'-9"	U	G12	3/4"	18'-0"	C
Q13	3/4"	22'-9"	U	G13	3/4"	18'-0"	C
Q14	3/4"	22'-9"	U	G14	3/4"	18'-0"	C
Q15	3/4"	22'-9"	U	G15	3/4"	18'-0"	C
Q16	3/4"	22'-9"	U	G16	3/4"	18'-0"	C
Q17	3/4"	22'-9"	U	G17	3/4"	18'-0"	C
Q18	3/4"	22'-9"	U	G18	3/4"	18'-0"	C
Q19	3/4"	22'-9"	U	G19	3/4"	18'-0"	C
Q20	3/4"	22'-9"	U	G20	3/4"	18'-0"	C
Q21	3/4"	22'-9"	U	G21	3/4"	18'-0"	C
Q22	3/4"	22'-9"	U	G22	3/4"	18'-0"	C
Q23	3/4"	22'-9"	U	G23	3/4"	18'-0"	C
Q24	3/4"	22'-9"	U	G24	3/4"	18'-0"	C
Q25	3/4"	22'-9"	U	G25	3/4"	18'-0"	C
Q26	3/4"	22'-9"	U	G26	3/4"	18'-0"	C
Q27	3/4"	22'-9"	U	G27	3/4"	18'-0"	C
Q28	3/4"	22'-9"	U	G28	3/4"	18'-0"	C
Q29	3/4"	22'-9"	U	G29	3/4"	18'-0"	C
Q30	3/4"	22'-9"	U	G30	3/4"	18'-0"	C
Q31	3/4"	22'-9"	U	G31	3/4"	18'-0"	C
Q32	3/4"	22'-9"	U	G32	3/4"	18'-0"	C
Q33	3/4"	22'-9"	U	G33	3/4"	18'-0"	C
Q34	3/4"	22'-9"	U	G34	3/4"	18'-0"	C
Q35	3/4"	22'-9"	U	G35	3/4"	18'-0"	C
Q36	3/4"	22'-9"	U	G36	3/4"	18'-0"	C
Q37	3/4"	22'-9"	U	G37	3/4"	18'-0"	C
Q38	3/4"	22'-9"	U	G38	3/4"	18'-0"	C
Q39	3/4"	22'-9"	U	G39	3/4"	18'-0"	C
Q40	3/4"	22'-9"	U	G40	3/4"	18'-0"	C
Q41	3/4"	22'-9"	U	G41	3/4"	18'-0"	C
Q42	3/4"	22'-9"	U	G42	3/4"	18'-0"	C
Q43	3/4"	22'-9"	U	G43	3/4"	18'-0"	C
Q44	3/4"	22'-9"	U	G44	3/4"	18'-0"	C
Q45	3/4"	22'-9"	U	G45	3/4"	18'-0"	C
Q46	3/4"	22'-9"	U	G46	3/4"	18'-0"	C
Q47	3/4"	22'-9"	U	G47	3/4"	18'-0"	C
Q48	3/4"	22'-9"	U	G48	3/4"	18'-0"	C
Q49	3/4"	22'-9"	U	G49	3/4"	18'-0"	C
Q50	3/4"	22'-9"	U	G50	3/4"	18'-0"	C

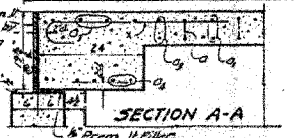
Class X Concrete	Cu. Yds.	2.9
Hand-mix Concrete	Cu. Yds.	245.5
Reinforcement Bars	Lbs.	60010
Structural Steel	Lbs.	6310
Floor Drains	Each	20
Metal Handrail	Lm. Ft.	163.3



SECTION C-C

PROJECT-U-1(25)
S.O. BRANCH KISHWAUKEE RIVER
F.A. RT. 7 (S.B.I. RT. 6) SEC. 34X-B
DE KALB COUNTY
STA. 83+24.5

COMPUTED	Henry P. [Signature]	EXAMINED	[Signature]
CHECKED	R. L. Smith	PASSED	[Signature]
DRAWN	H. P. G. [Signature]	APPROVED	[Signature]
CHECKED	R. L. S.		
SPECIAL	ASSEMBLED		
	CHECKED		



SECTION A-A

FOR INFORMATION ONLY

PLOT DATE = 10/07/06
FILE NAME = 34X-BR
PLOT SCALE = 1/4" = 1'-0"
REFERENCE = REF
DEFINITION = MDS

ILLINOIS DEPARTMENT OF TRANSPORTATION
EXISTING BRIDGE PLANS
FAP RTE 567 (IL RTE 38)
SECTION 34X-BR
DEKALB COUNTY

SCALE: VERT. 1/4" = 1'-0"
HORIZ. 1/4" = 1'-0"
DATE 2/24/06

DRAWN BY SUTHEARD
CHECKED BY BOTT

GREENE & BRADFORD, INC.
REGISTERED ENGINEERS
PROJECT: 05198
2/27/06-MDS

COMPUTER FILE NO. D10800EPLN

REVISIONS	
NAME	DATE

EXISTING BRIDGE PLANS