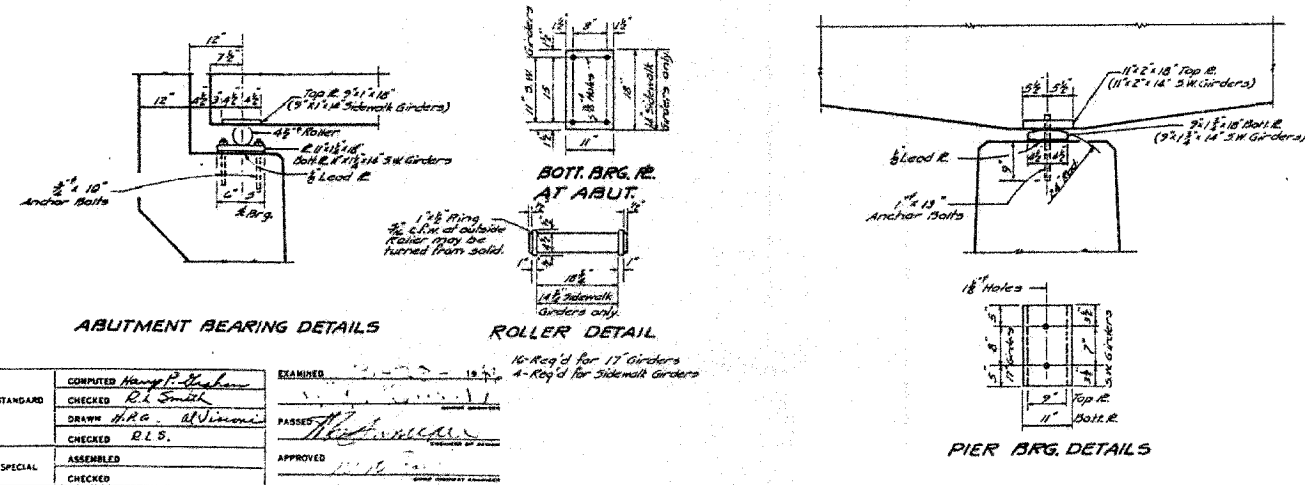
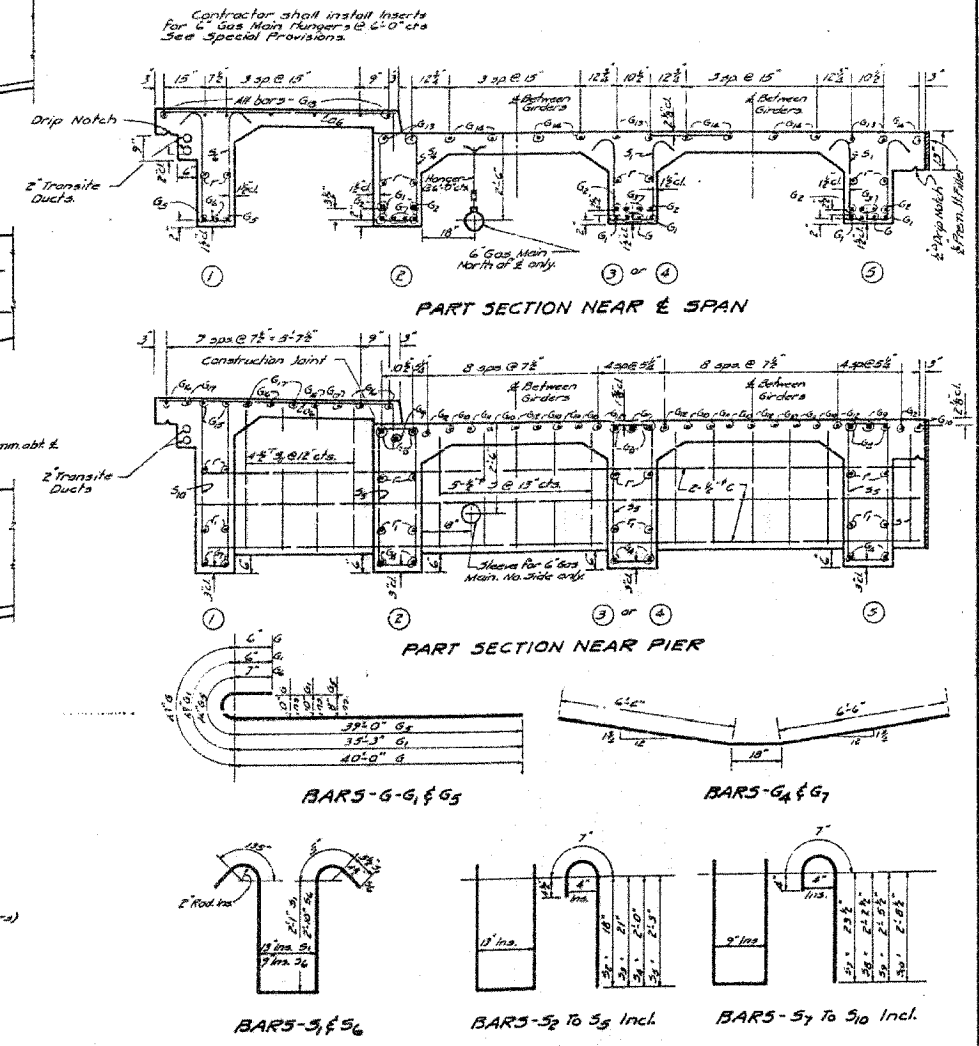
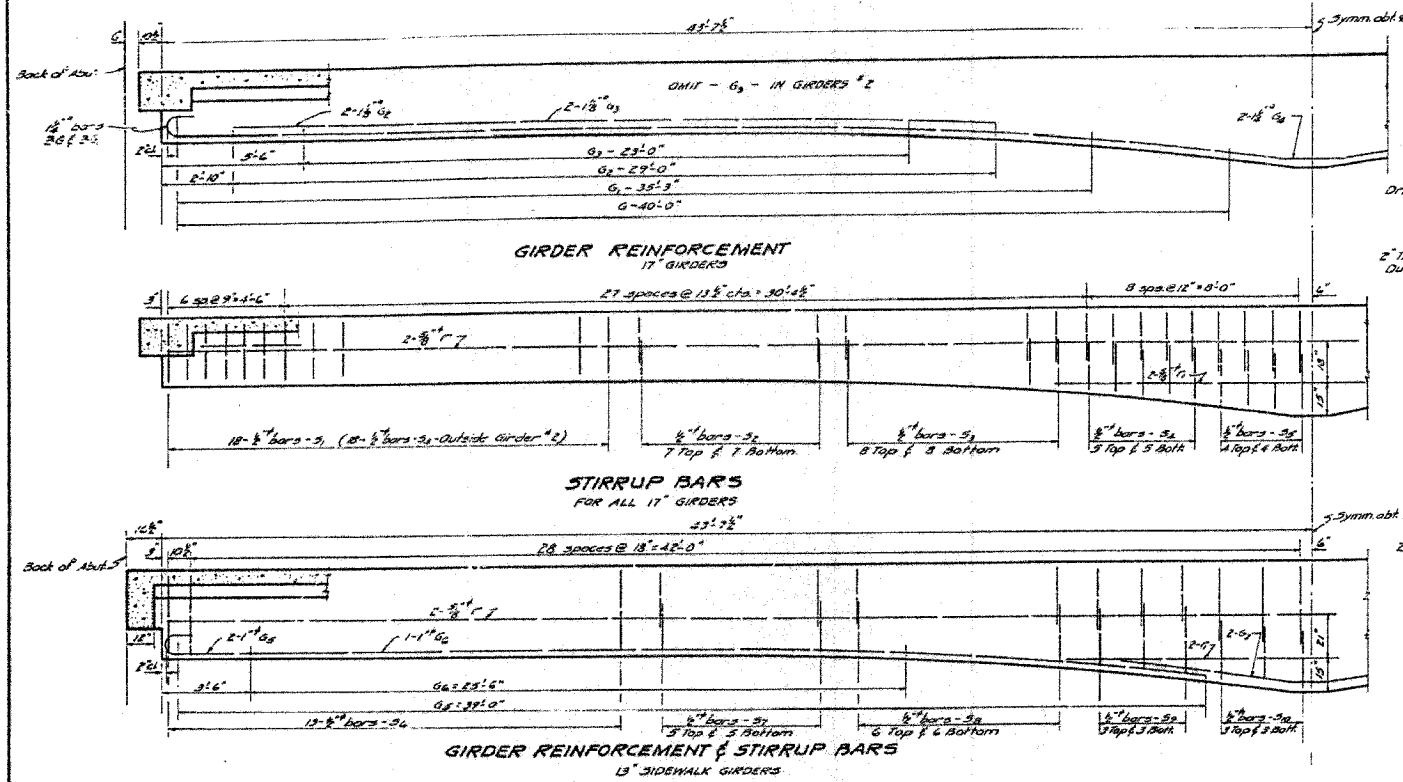


F.A.P. RTE.	SECTION	COUNTY	TOTAL SHEETS	SHEET NO.
567	34X-BR	DEKALB	90	59
STA.		TO STA.		
FED. ROAD DIST. NO.		ILLINOIS	FED. AID PROJECT	

STATE OF ILLINOIS
DEPARTMENT OF PUBLIC WORKS & BUILDINGS
DIVISION OF HIGHWAYS

DATE	SECTION	COUNTY	TOTAL SHEETS	SHEET NO.
6	34X-B	DEKALB	13	7
FED. ROAD DIST. NO. ILLINOIS FED. AID PROJECT				



COMPUTED	Hamp P. Mahan	EXAMINED	
CHECKED	R.L. Smith	DRAWN	H.R.C. Alvimoni
CHECKED	H.R.C. Alvimoni	CHECKED	R.L.S.
SPECIAL	ASSEMBLED	APPROVED	
	CHECKED		

PROJECT - U-1(25)
SO. BRANCH KISHWAUKEE RIVER
F.A.P. 7(S.B.I. RT. 6) SEC. 34X-B
DE KALB COUNTY
STA. 83+24.5

FOR INFORMATION ONLY

PLOT DATE = 04/05
FILE NAME = 05FILES
PLOT SCALE = 1/8"=1'-0"
PLOT DATE = 04/05
OPERATOR = MUSER

ILLINOIS DEPARTMENT OF TRANSPORTATION
EXISTING BRIDGE PLANS

FAP RTE 567 (IL RTE 38)
SECTION 34X-BR
DEKALB COUNTY

SCALE: VERT. _____
HORIZ. _____
DATE 2/24/06

DRAWN BY SUTHEARD
CHECKED BY BOTT

GREENE & BRADFORD, INC.
OF SPRINGFIELD

COMPUTER FILE NO.
D10800EPLN

PROJECT 05198
2/27/06-MDS

REVISIONS	
NAME	DATE

EXISTING BRIDGE PLANS