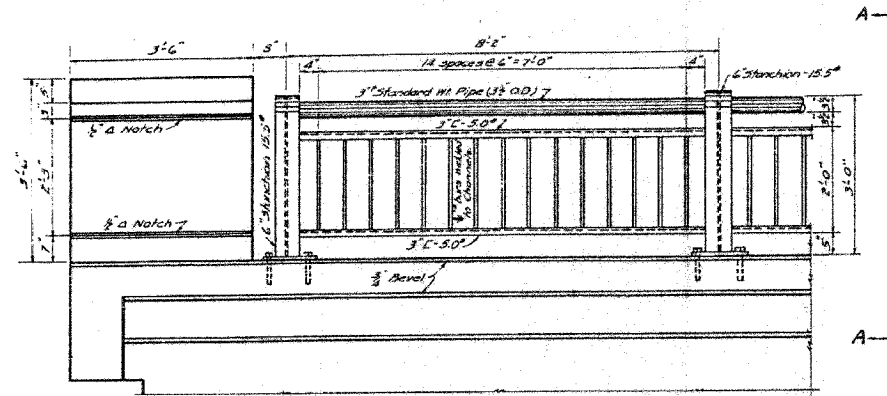


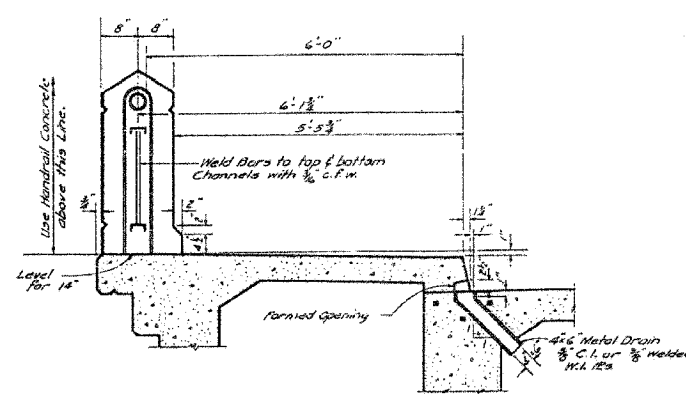
F.A.P. RTE.	SECTION	COUNTY	TOTAL SHEETS	SHEET NO.
567	34X-BR	DEKALB	90	60
STA.		TO STA.		
FED. ROAD DIST. NO.		ILLINOIS FED. AID PROJECT		

STATE OF ILLINOIS  
DEPARTMENT OF PUBLIC WORKS & BUILDINGS  
DIVISION OF HIGHWAYS

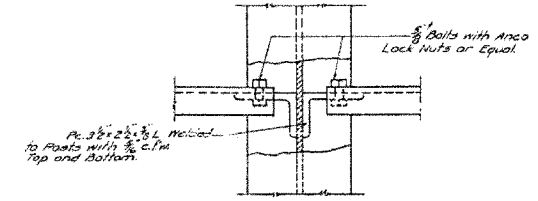
DESIGN NO.	DATE	COUNTY	TOTAL SHEETS	SHEET NO.
6	12-1-0	DEKALB	13	8
FED. ROAD DIST. NO.		ILLINOIS FED. AID PROJECT		



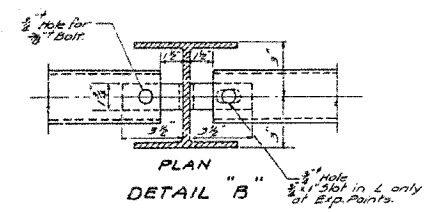
ELEVATION-SHOWING RAIL DETAILS



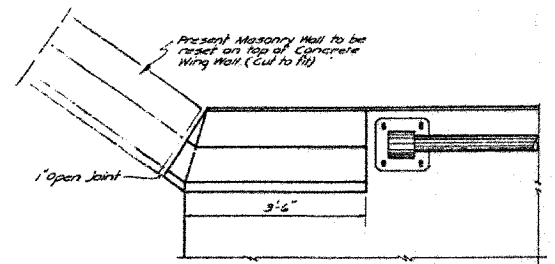
SECTION A-A  
SHOWING RAIL & DRAIN



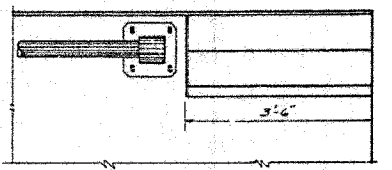
ELEVATION



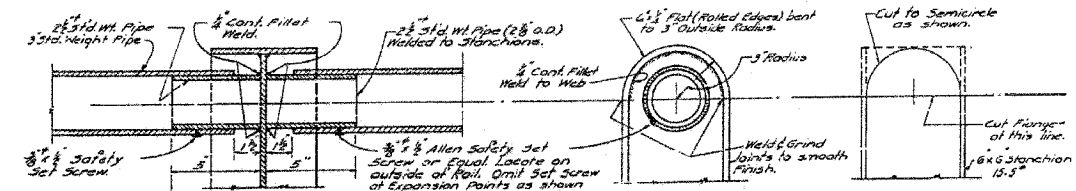
PLAN  
DETAIL "B"



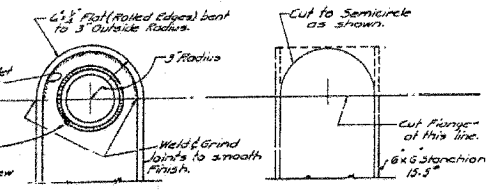
PLAN OF POST - N.E. CORNER ONLY



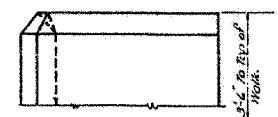
TYPICAL PLAN OF POSTS



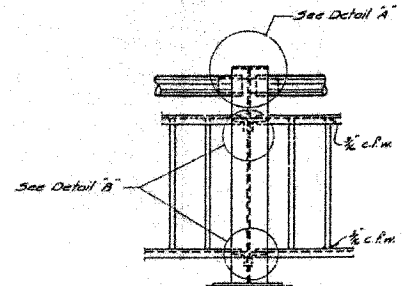
SECTION  
DETAIL "A"



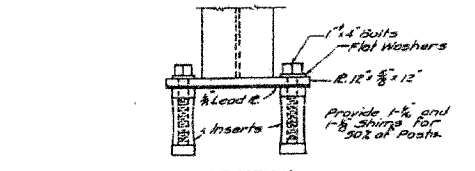
ELEVATION OF POST  
SHOWING CAP FABRICATION



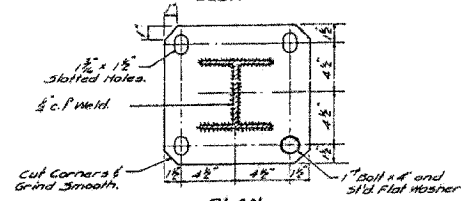
PART ELEVATION  
TOP OF N.E. POST



RAIL POST DETAIL



ELEVATION



PLAN  
ANCHORAGE FOR  
RAIL POSTS

**NOTE**  
All Metal Rail Material is included for Payment as Metal Handrail. The No. of Lin. Ft. is measured center to center of End Metal Posts. The Contract Unit Price for Metal Handrail shall include payment for installing and painting the Handrail.

PROJECT-U-1(25)  
30. BRANCH KISHWAUKEE RIVER  
F.A.R.T. 7(S.B.I.R.T.6) SEC. 34 X-13  
DE KALB COUNTY  
STA. 83+24.5

COMPUTED	Harry P. Graham	EXAMINED	
CHECKED	R.L. Smith	DRAWN	H.R.G. at Union
DRAWN	H.R.G. at Union	CHECKED	R.L.S.
CHECKED	R.L.S.	APPROVED	
SPECIAL	ASSEMBLED		
	CHECKED		

**FOR INFORMATION ONLY**

PLOT DATE \* DATES  
FILE NAME \* FILES  
PLOT SCALE \* SCALES  
PLOT DEVICE \* DEVICES  
OPERATOR \* USERS

REVISIONS	
NAME	DATE

ILLINOIS DEPARTMENT OF TRANSPORTATION  
**EXISTING BRIDGE PLANS**

FAP RTE 567 (IL RTE 38)  
SECTION 34X-BR  
DEKALB COUNTY

SCALE: VERT. \_\_\_\_\_  
HORIZ. \_\_\_\_\_  
DATE: 2/24/06

DRAWN BY: SUTHEARD  
CHECKED BY: BOIT

GREENE & BRADFORD, INC.  
CONSULTING ENGINEERS  
1001 W. MONROE ST., SUITE 100  
SPRINGFIELD, ILLINOIS 62761  
PHONE: 217-223-8800 FAX: 217-223-8801  
WWW.GRENEBRADFORD.COM

COMPUTER FILE NO.  
D10800EPLN  
PROJECT 05198  
2/21/06-MDS

**EXISTING BRIDGE PLANS**