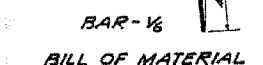
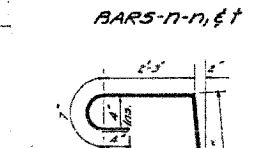
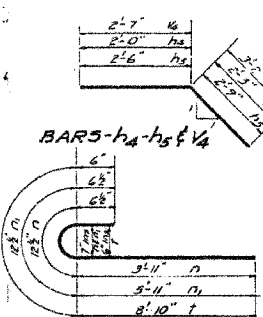
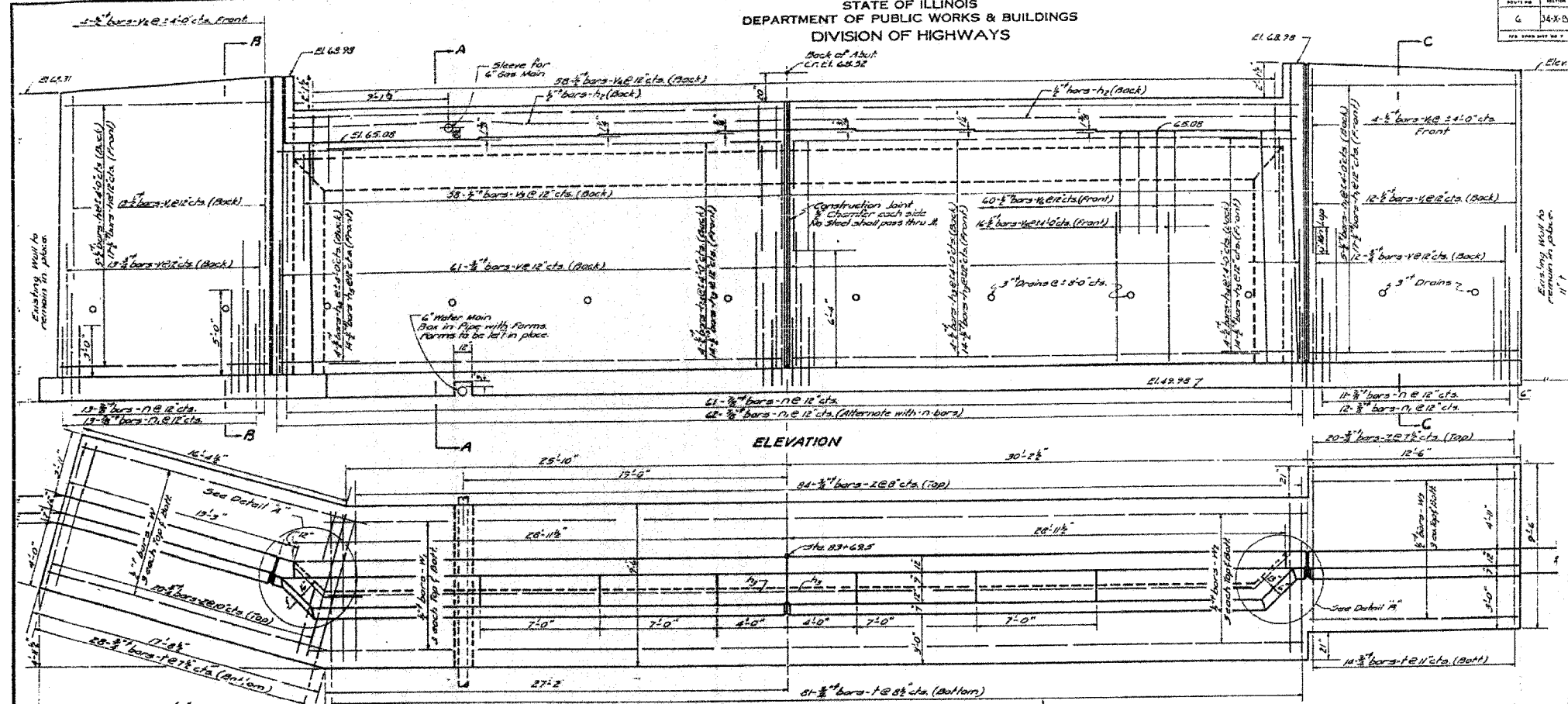


F.A.P. RTE.	SECTION	COUNTY	TOTAL SHEETS	SHEET NO.
567	34X-BR	DEKALB	90	62
STA.		TO STA.		
FED. ROAD DIST. NO.		ILLINOIS FED. AID PROJECT		

SECTION	DATE	BY	NO.	REVISION
G	3-8-05	DEKALB	13	10

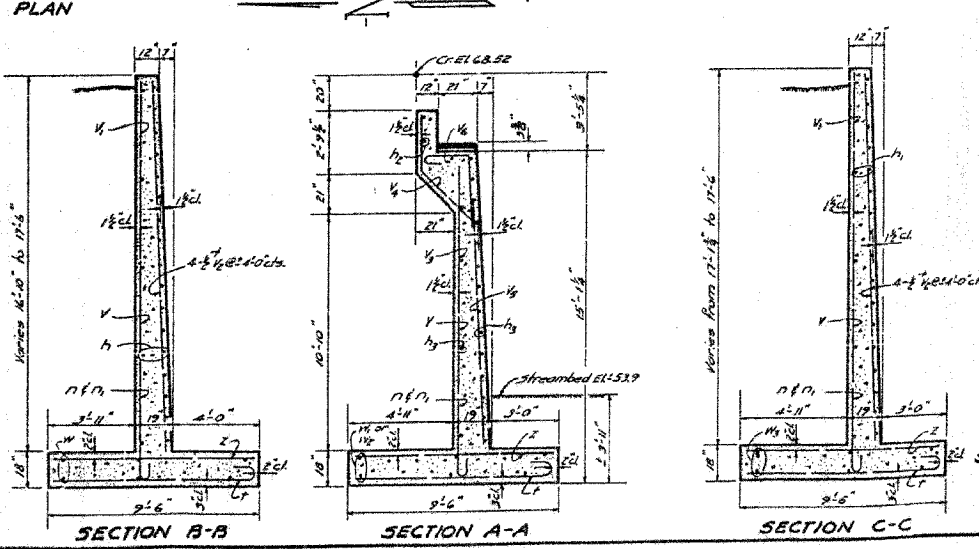
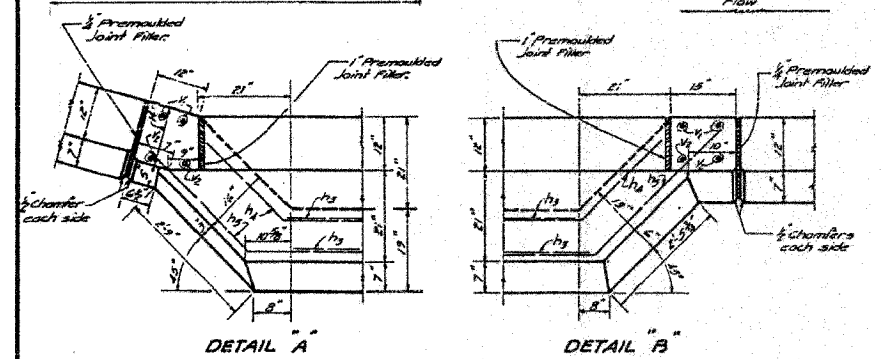
SHEET NO. 8 SHEETS

STATE OF ILLINOIS  
DEPARTMENT OF PUBLIC WORKS & BUILDINGS  
DIVISION OF HIGHWAYS



BILL OF MATERIAL  
EAST ABUTMENT

BAR	NO.	SIZE	LENGTH	SHAPE
h1	22	3/4"	13'-0"	
h2	22	-	12'-0"	
h3	4	-	29'-6"	
h3	36	-	27'-0"	
h4	8	-	4'-3"	
h5	28	3/4"	5'-3"	
v	86	3/4"	8'-0"	
n	27	3/4"	11'-0"	
n	12	3/4"	16'-6"	
n	58	3/4"	6'-6"	
n	58	3/4"	3'-9"	
n	16	3/4"	11'-0"	
n	60	3/4"	7'-3"	
n	6	3/4"	17'-6"	
n	6	-	7'-6"	
n	12	-	29'-0"	
n	6	3/4"	12'-0"	
t	85	3/4"	5'-6"	C
t	87	3/4"	7'-6"	C
t	123	3/4"	10'-3"	C
t	124	3/4"	9'-3"	C
Class X Concrete		Cu. Yds.	118.8	
Reinforcement Bars		Lbs.	9750	



EAST ABUTMENT  
PROJECT - U-1(25)  
SO. BRANCH KISHWAUKEE RIVER  
F.A.R.T. 7 (S.B.I.R.T. 6) SEC. 34 X-B  
DE KALB COUNTY  
STA. 83+24.5

COMPUTED	Nancy P. Blackburn	EXAMINER	[Signature]
CHECKED	D.L. Smith		
DRAWN	M.R.G. Althammer		
CHECKED	R.L.S.		
SPECIAL	ASSEMBLED	APPROVED	[Signature]
	CHECKED		

FOR INFORMATION ONLY

PLOT DATE = 04/05  
FILE NAME = #FILES  
PLOT SCALE = #SCALES  
PLOT SIZE = #SIZES  
OPERATOR = #USERS

REVISIONS	
NAME	DATE

ILLINOIS DEPARTMENT OF TRANSPORTATION  
EXISTING BRIDGE PLANS

FAP RTE 567 (IL RTE 38)  
SECTION 34X-BR  
DEKALB COUNTY

SCALE: VERT. \_\_\_\_\_  
HORIZ. \_\_\_\_\_  
DATE 2/24/06

DRAWN BY SUTHEARD  
CHECKED BY BOTT

GREENE & BRADFORD, INC.  
OF SPRINGFIELD

COMPUTER FILE NO.  
D10800EPLN

PROJECT 05198  
2/27/06-MDS