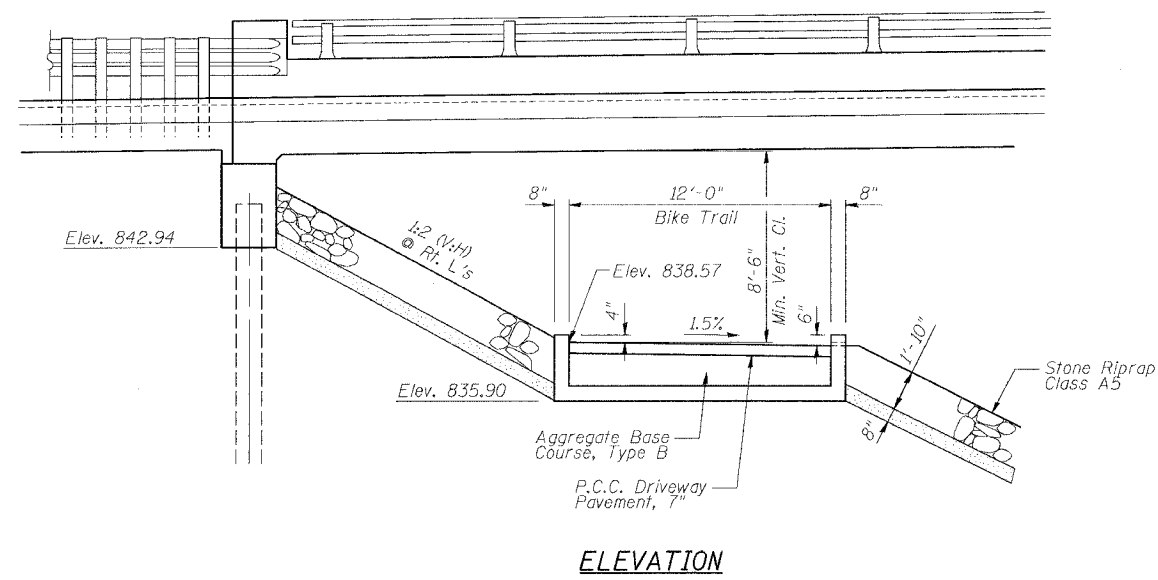
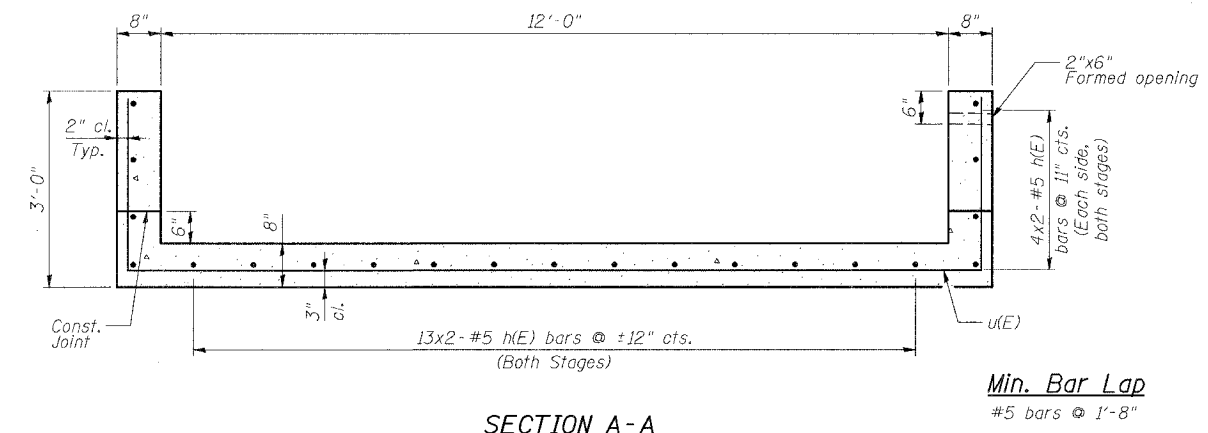


STATE OF ILLINOIS
DEPARTMENT OF TRANSPORTATION

ROUTE NO.	SECTION	COUNTY	TOTAL SHEETS	SHEET NO.	SHEET NO. 1 1 SHEETS
FAU 567 (IL 38)	34-XBR	DEKALB	90	65	
FED. ROAD DIST. NO.	ILLINOIS	FED. AID PROJECT-	Contract No. 64583		

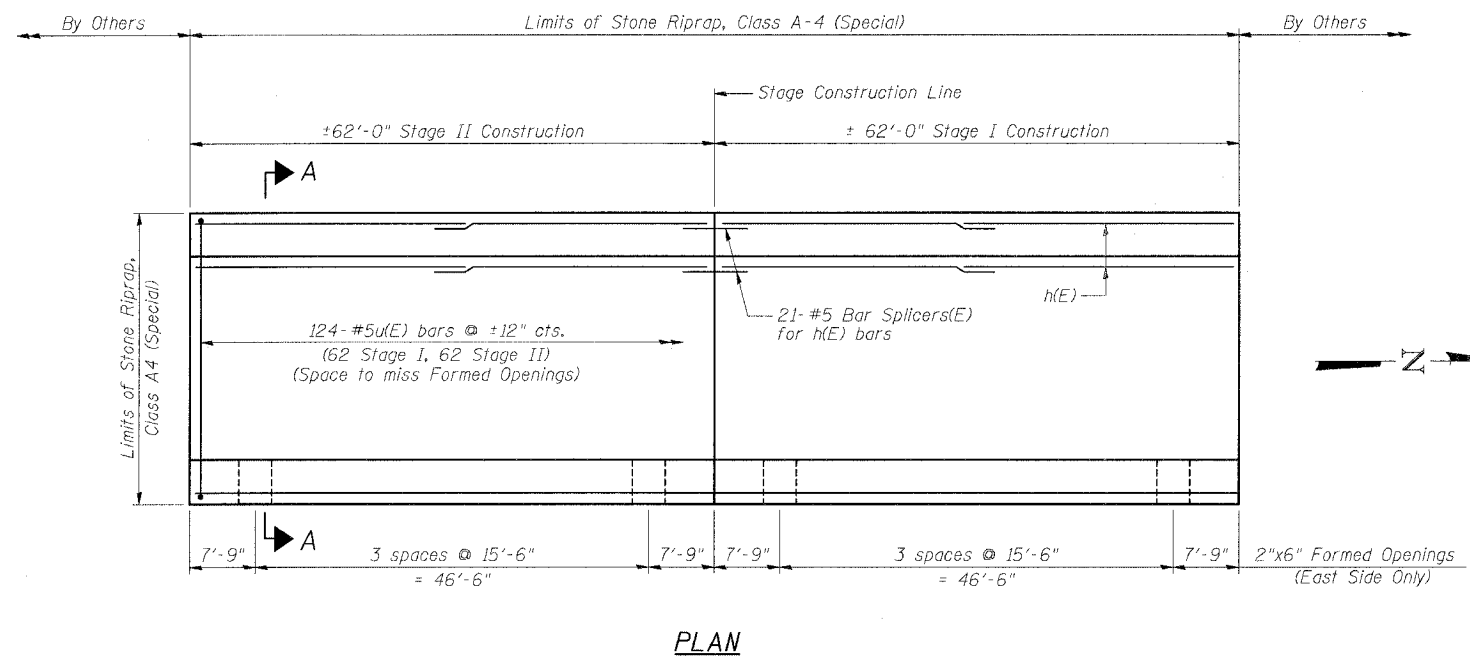


ELEVATION



SECTION A-A

Min. Bar Lap
#5 bars @ 1'-8"



PLAN

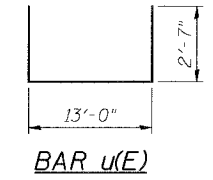
GENERAL NOTES

Reinforcement bars shall conform to the requirements of AASHTO M 31 or M 322 Grade 60.
All Construction joints shall be bonded.
For Riprap details, see Bridge plans.
For Bar Splicer Details, see Sheet 11 of 14 of Bridge Plans.

BILL OF MATERIAL

Bar	No.	Size	Length	Shape
h(E)	84	#5	32'-0"	—
u(E)	124	#5	18'-2"	└┘
Aggregate Base Course, Type B			Ton	126.8
P.C.C. Driveway Pavement, 7"			Sq. Yd.	165.3
Stone Riprap, Class A-4 (Special)			Sq. Yd.	184
Concrete Structures			Cu. Yd.	55.2
Reinforcement Bars, Epoxy Coated			Pound	5150
Bar Splicers			Each	21

Reinforcement bars designated (E) shall be epoxy coated.
Bars indicated thus 2x3-#5 etc. indicates 2 lines of bars with 3 lengths per line.



BAR u(E)

ILLINOIS DEPARTMENT OF TRANSPORTATION
BIKE TRAIL DETAILS
F.A.U. ROUTE 567 (IL 38) OVER SOUTH BRANCH OF THE KISHWAUKEE RIVER DEKALB COUNTY - SEC. 34-XBR STA. 140+96.71 S.N. 019-0044

SCALE: VERT. _____
HORIZ. _____
DATE: 7/6/05

DRAWN BY: LANDREY
DESIGNED BY: TRELLO
CHECKED BY: SANFORD

GREENE & BRADFORD, INC.
CONSULTING ENGINEERS
1000 N. WASHINGTON ST., SUITE 200
DEKALB, ILLINOIS 62521
TEL: 618-406-0000
FAX: 618-406-0001
WWW.GREENE-AND-BRADFORD.COM

COMPUTER FILE NO.
SN019-0044BIKE
PROJECT 0519B
12/4/06-MML

REVISIONS	
NAME	DATE

FILE NAME = J:\0519B\DRAWINGS\SN019-0044\SN019-0044.dgn
PLOT SCALE = 4.0000 / INCH = XES-8850-ENC.BRIDGE.plt
PLOT DATE = 12/4/2006
TIME = 11:52:17 AM
OPERATOR = mtrelo