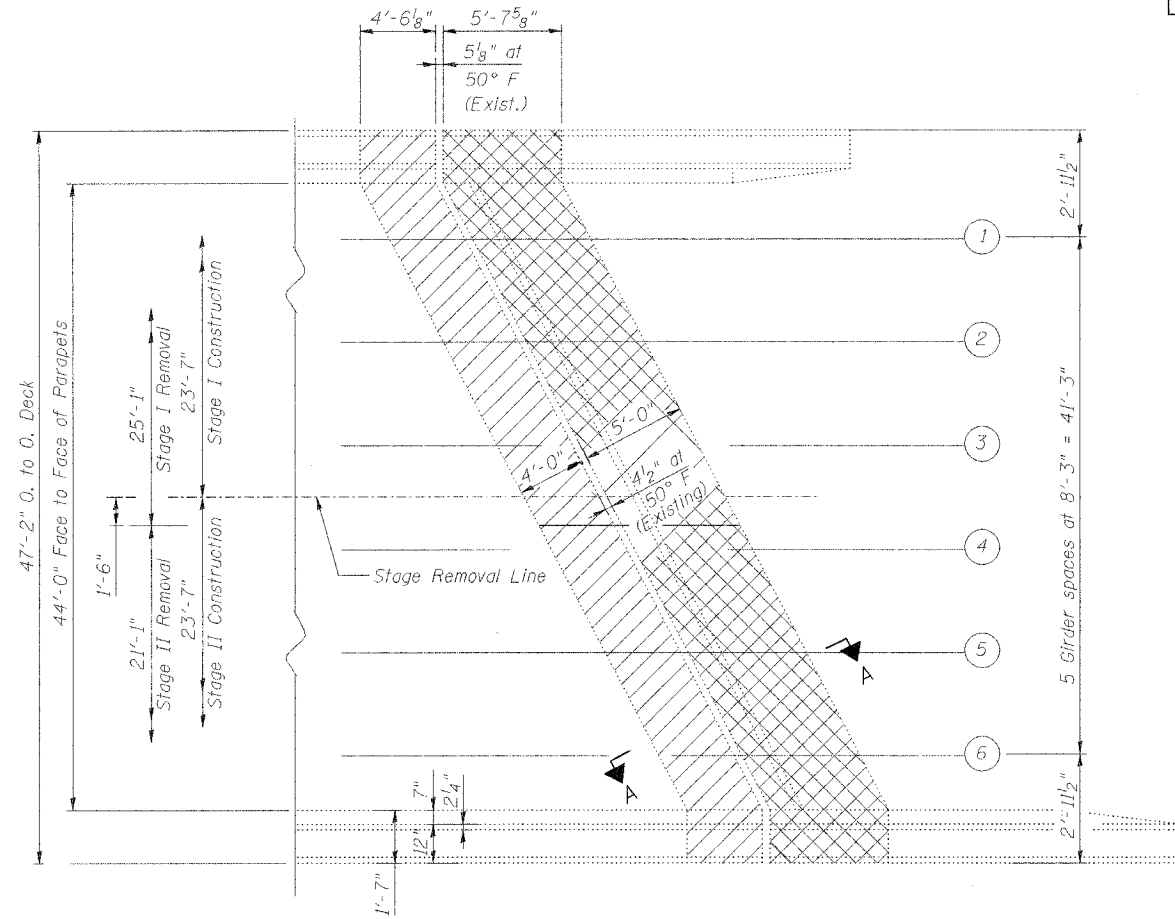


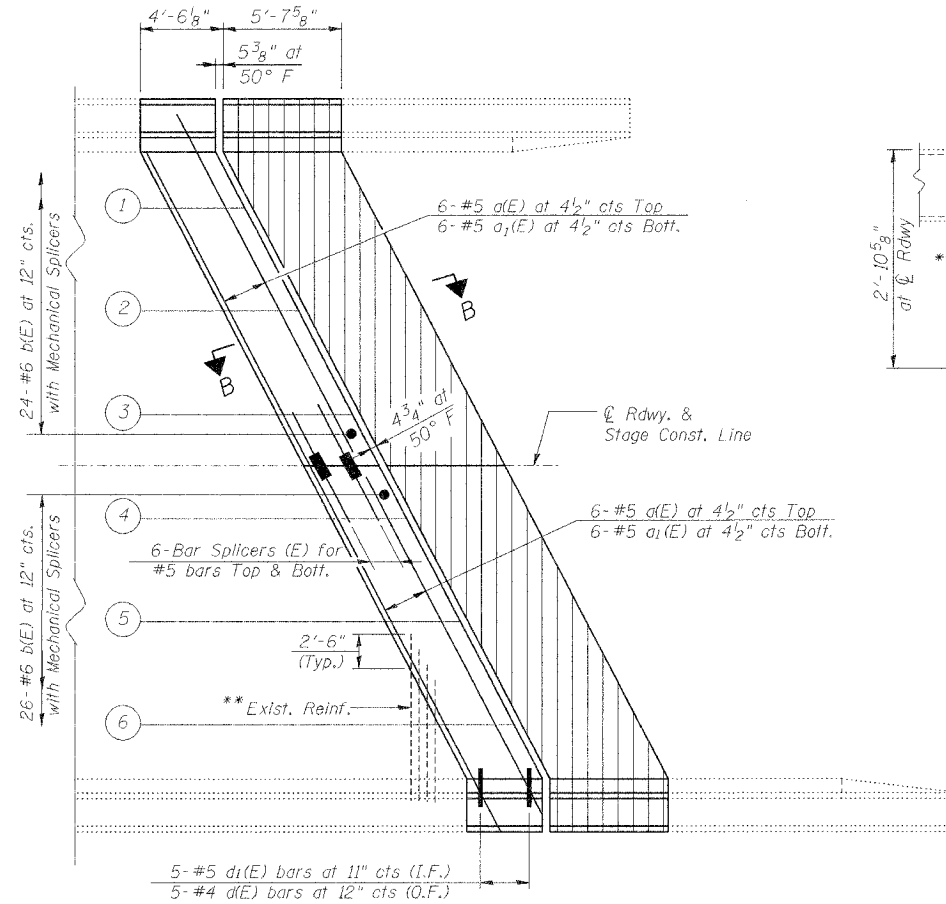
STATE OF ILLINOIS  
DEPARTMENT OF TRANSPORTATION

ROUTE NO.	SECTION	COUNTY	TOTAL SHEETS	SHEET NO.	SHEET NO. 2 8 SHEETS
U.S. 20	(177-2B)	STEPHENSON COUNTY	11	4	
FED. ROAD DIST. NO. 7	ILLINOIS	FED. AID PROJECT-	CONTRACT # 64001		



PARTIAL PLAN SHOWING  
CONCRETE REMOVAL

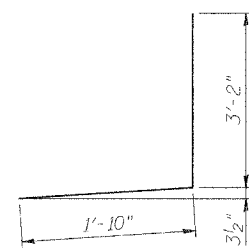
See Sht. 6 of 8 for Removal Details and Sht. 7 of 8 for quantities.



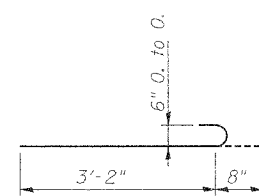
PARTIAL PLAN SHOWING  
CONCRETE REPLACEMENT

See Sht. 7 of 8 for Replacement details and quantities.

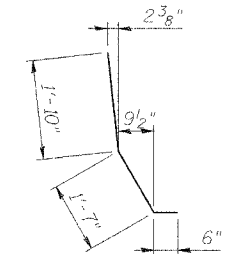
\*\* Existing reinforcement extended into the removal area shall be cleaned, straightened and incorporated into the new construction. Any reinforcement bars that are damaged during concrete removal shall be replaced with an approved bar splicer or anchorage system. Cost shall be included with Concrete Removal



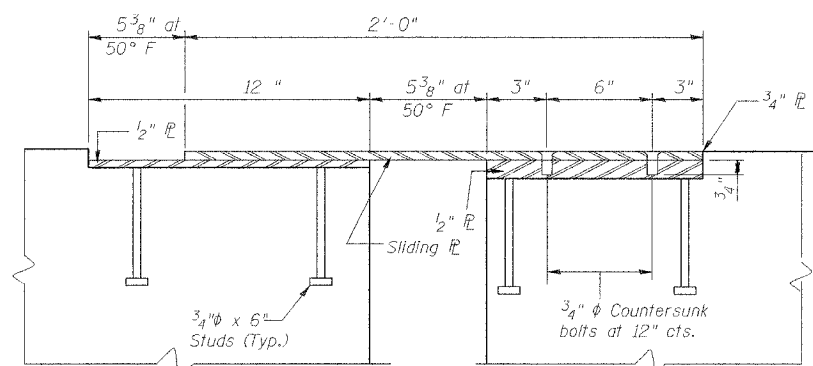
BAR d (E)



BAR b (E)

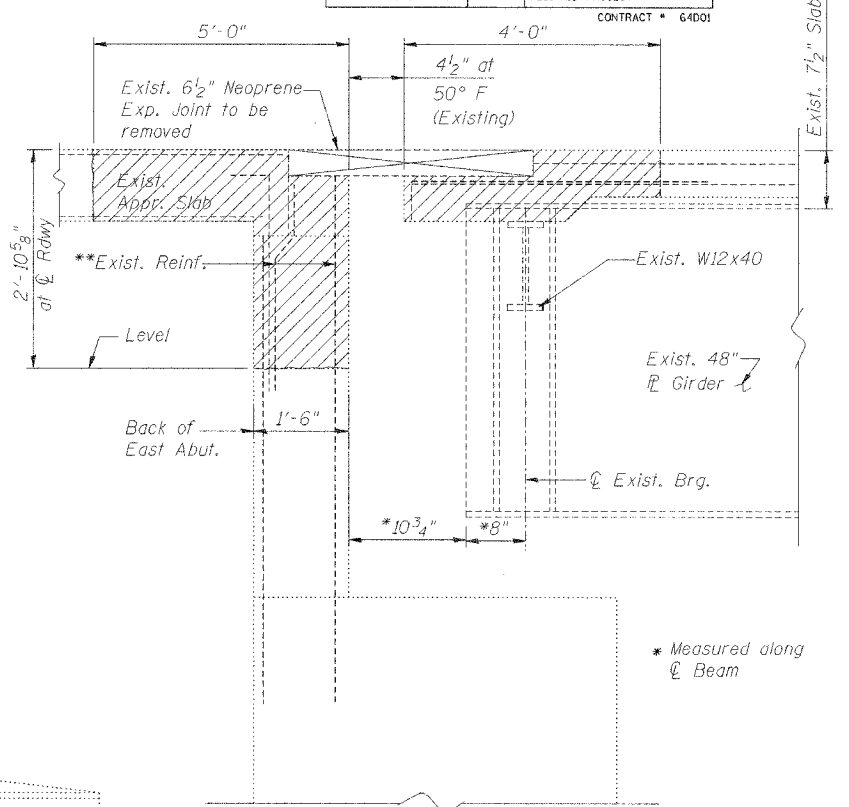


BAR d1 (E)



PARAPET PLATE ASSEMBLY DETAIL

DESIGNED	M.R./R.A.
CHECKED	H.T.
DRAWN	J.S.P.
CHECKED	H.T./M.R.

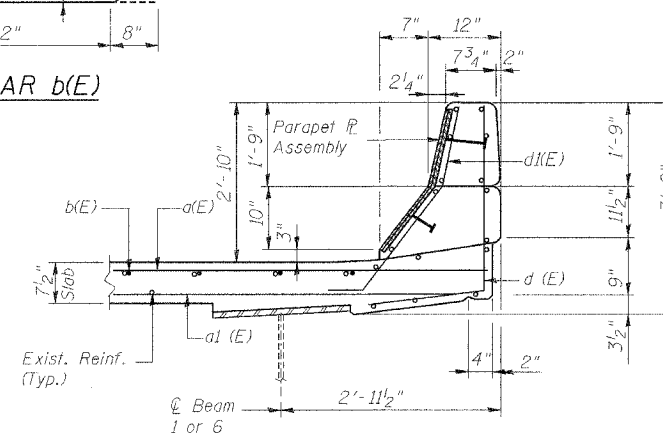


SECTION A-A

BILL OF MATERIAL

Bar	No.	Size	Length	Shape
d(E)	12	#5	26'-1"	—
a1(E)	12	#5	25'-1"	—
b(E)	50	#6	3'-10"	U
d(E)	10	#4	5'-0"	L
d1(E)	10	#5	3'-11"	—
Concrete Removal			Cu. Yd.	8.8
Concrete Superstructure			Cu. Yd.	8.8
Reinforcement Bars Epoxy Coated			Lbs.	1000

1. Reinforcement Bars designated (E) shall be epoxy coated.
2. For Section B-B. See Sheet 3 of 8.
3. For concrete removal details at the abutment, see sheet 6 of 8.
4. For concrete replacement and reinforcement details at the abutment, see sheet 7 of 8.
5. For bar splicer details, see sheet 8 of 8.
6. Hatched areas indicate concrete removal.



SECTION THRU CURB

SUPERSTRUCTURE DETAILS

US 20 OVER PECATONICA RIVER  
FAP ROUTE 301 (US20), SECTION (177-2BIM)  
STEPHENSON COUNTY  
STATION 539+14.00  
STRUCTURE NO. 089-0045