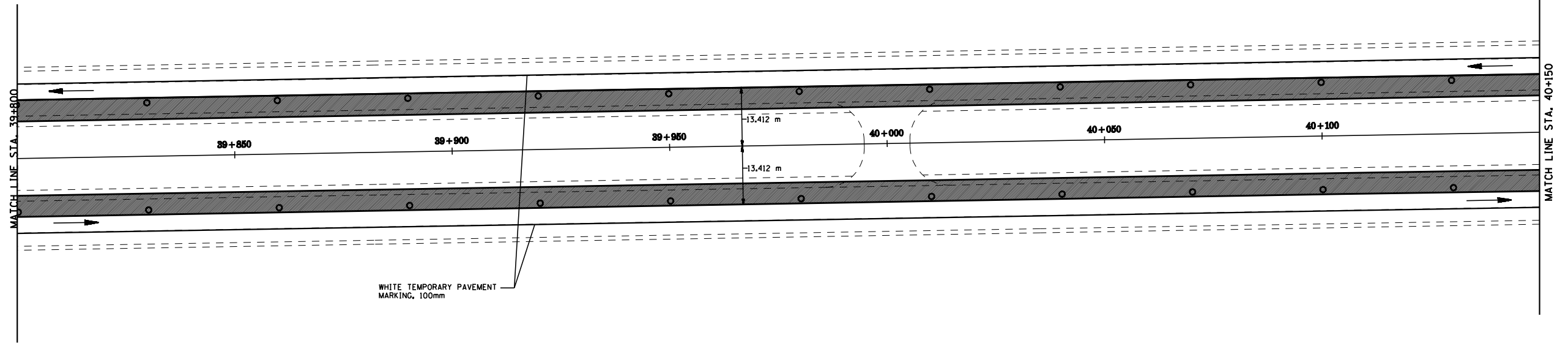
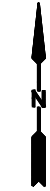


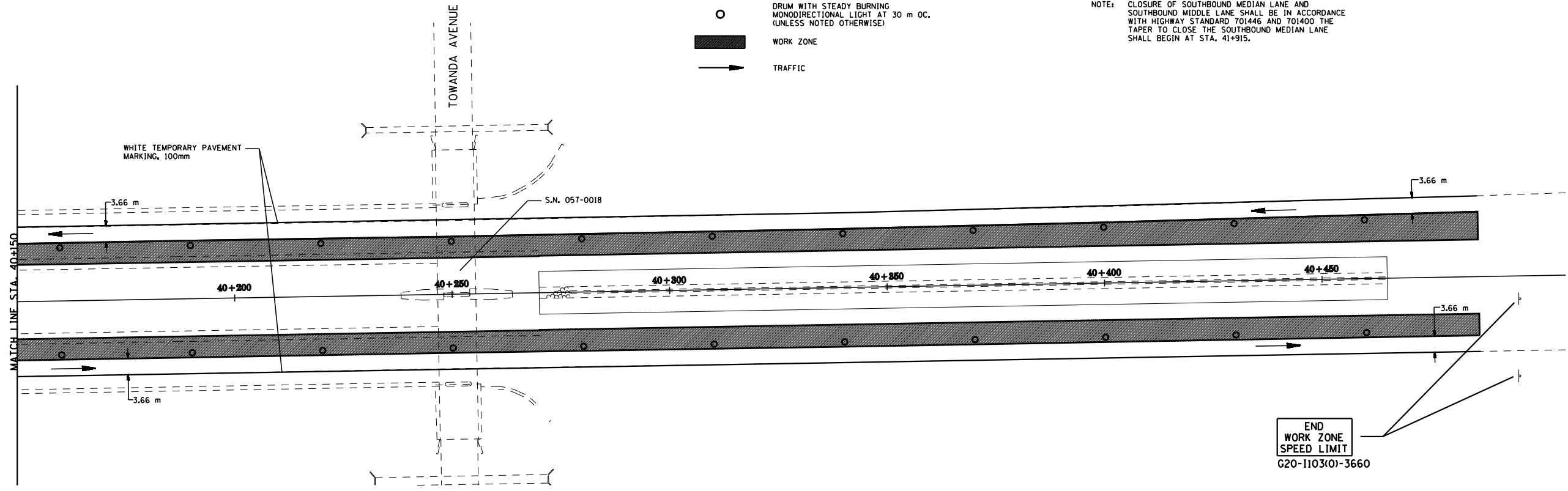
| F.A.I. RTE. | SECTION | COUNTY | TOTAL SHEETS | SHEET NO. |
|---------------------|---------|----------------|------------------|-----------|
| 55 | | McLEAN | 87 | 38 |
| STA. 39+800 | | TO STA. 40+486 | | |
| FED. ROAD DIST. NO. | | ILLINOIS | FED. AID PROJECT | |

• (57-4)RS-3 & 1



- LEGEND**
- DRUM WITH STEADY BURNING MONODIRECTIONAL LIGHT AT 30 m OC. (UNLESS NOTED OTHERWISE)
 - ▨ WORK ZONE
 - TRAFFIC

NOTE: CLOSURE OF SOUTHBOUND MEDIAN LANE AND SOUTHBOUND MIDDLE LANE SHALL BE IN ACCORDANCE WITH HIGHWAY STANDARD 701446 AND 701400 THE TAPER TO CLOSE THE SOUTHBOUND MEDIAN LANE SHALL BEGIN AT STA. 41+915.



STAGE CONSTRUCTION DETAILS - STAGE 1
 F.A.I. 55
 SECTION (57-4)RS-3 & 1
 McLEAN COUNTY