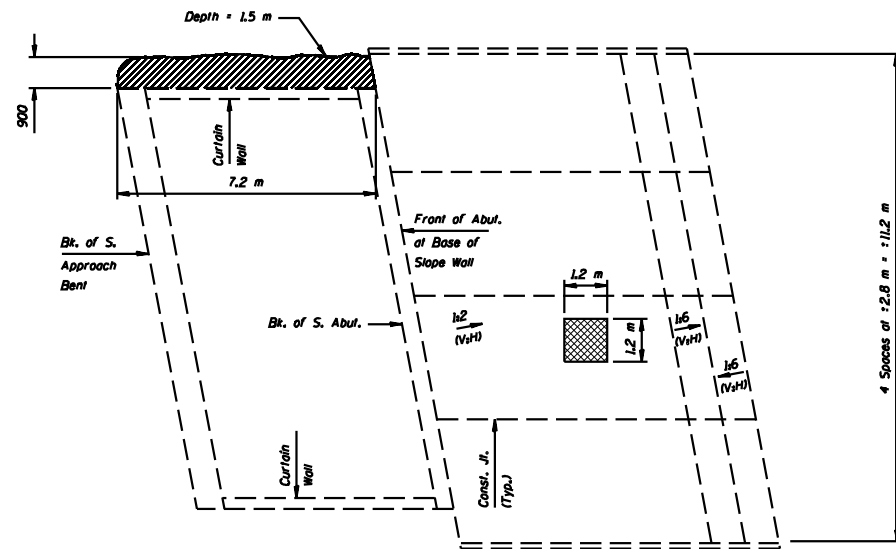


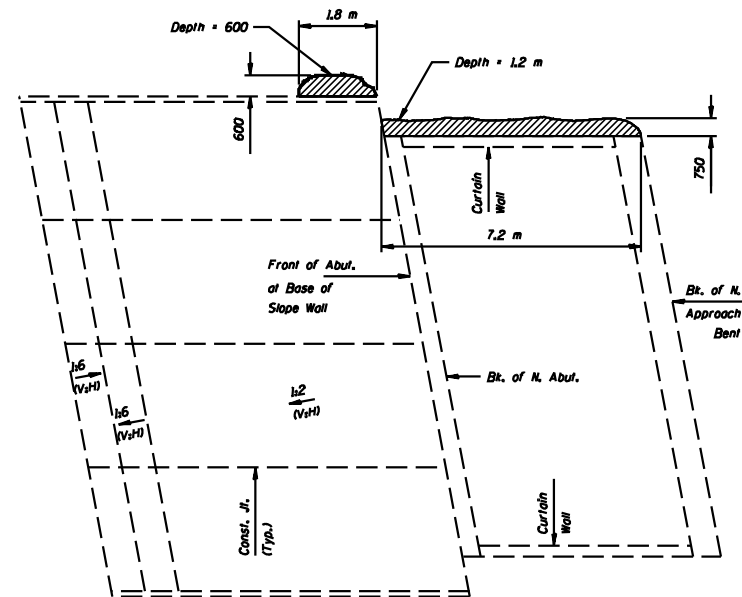
ROUTE NO.	SECTION	COUNTY	POST MILE	SHEET NO.
FAJ 55	•	McLEAN	07	57
FED. ROAD DIST. NO. 7		ILL. HIGH.	FED. AID PROJECT	

SHEET NO. 2
3 SHEETS

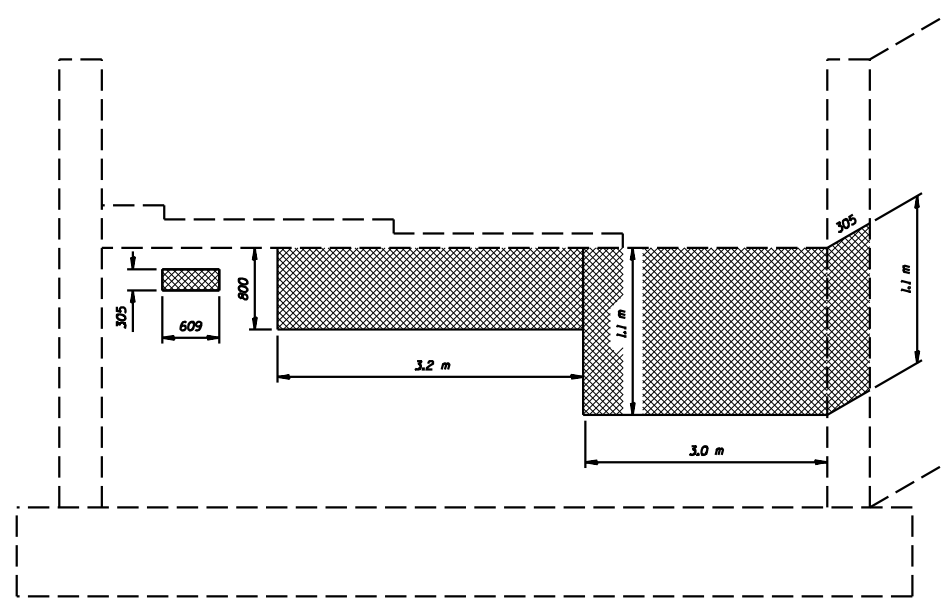
• (57-4)RS-3 & 1



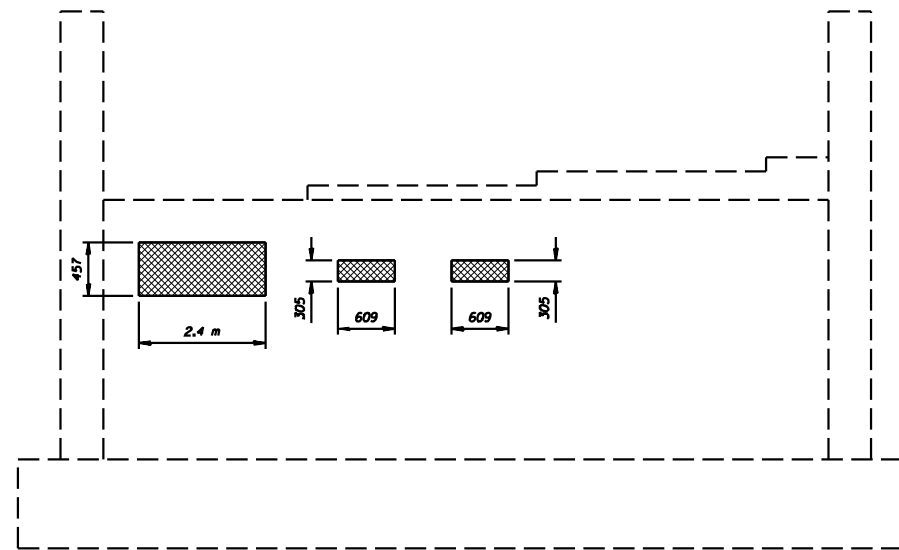
S. ABUT. AND SLOPE WALL PLAN



N. ABUT. AND SLOPE WALL PLAN



SOUTH ABUTMENT



NORTH ABUTMENT

DESIGNED	--
CHECKED	--
DRAWN	NO
CHECKED	JKC

- Structural Repair of Concrete (Depth Equal To or Less Than 125 mm)
- Denotes eroded areas requiring backfill. Use Stone Dumped Riprap, Class A4 as backfill material.

TOTAL BILL OF MATERIAL

ITEM	LIMIT	QTY.
Stone Dumped Riprap, Class A4	m ²	13
Structural Repair of Concrete (Depth Equal To or Less Than 125 mm)	m ²	9.3

All dimensions are in millimeters (mm) except as noted.

**REPAIR PLAN-SN 057-0214
I-39 OVER F.A.I. ROUTE 55
SECTION (57-4)RS-3 & 1
McLEAN COUNTY
SN 057-0214 (RAMP A)
SN 057-0215 (NB I-39)**