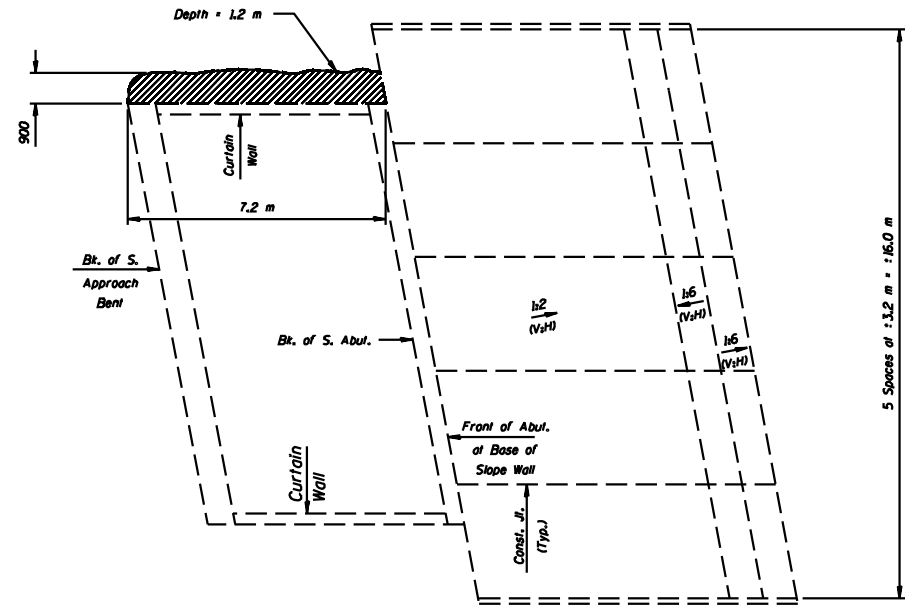
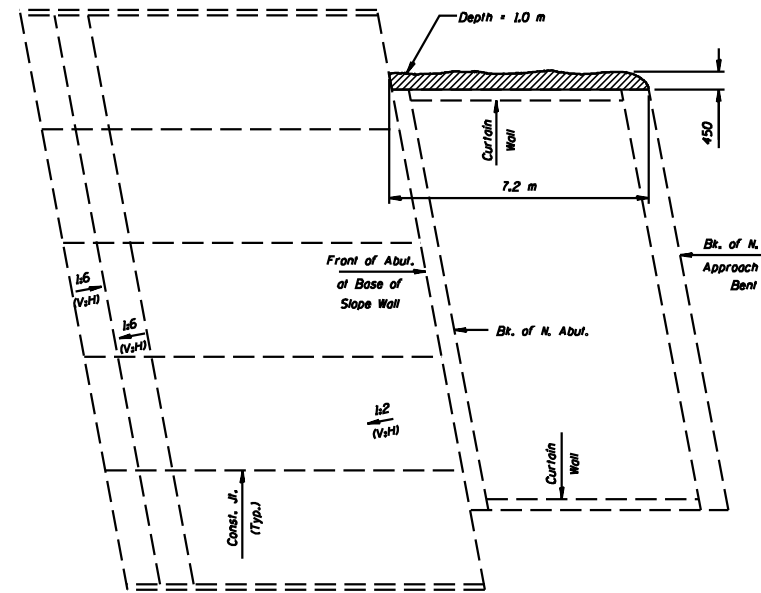


ROUTE NO.	SECTION	COUNTY	POST MILE	POST MILE	SHEET NO.
FAI 55	*	MCLEAN	07	58	3
FED. ROAD DIST. NO. 7		ILL. PROJ.	FED. AID PROJECT		

\* (57-4)RS-3 & 1



S. ABUT. AND SLOPE WALL PLAN

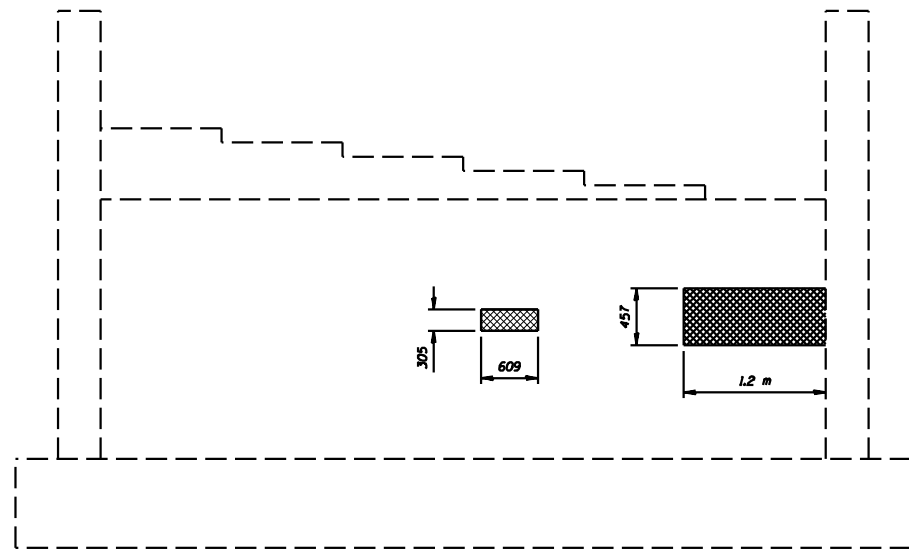


N. ABUT. AND SLOPE WALL PLAN

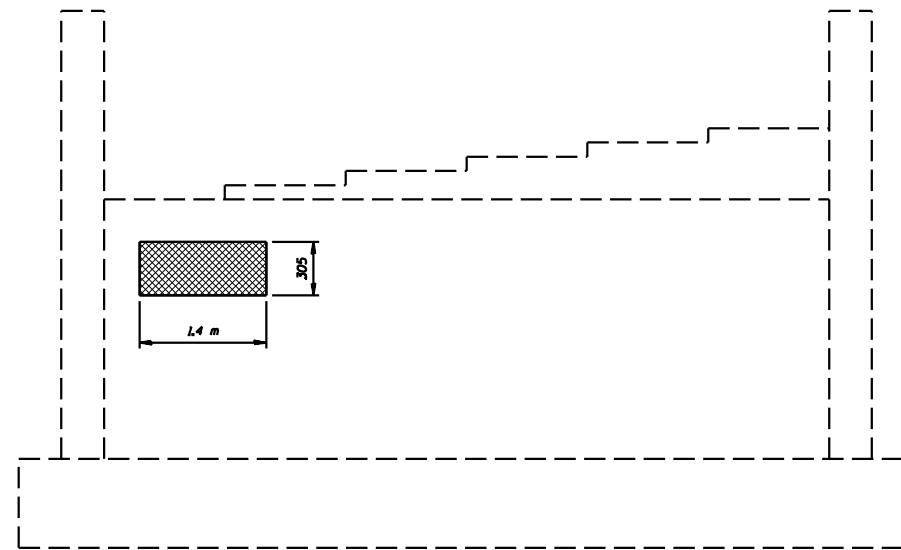
TOTAL BILL OF MATERIAL

ITEM	UNIT	QTY.
Stone Dumped Riprap, Class A4	m <sup>2</sup>	10
Structural Repair of Concrete (Depth Equal To or Less Than 125 mm)	m <sup>2</sup>	1.2

All dimensions are in millimeters (mm) except as noted.



SOUTH ABUTMENT



NORTH ABUTMENT

DESIGNED	--
CHECKED	--
DRAWN	NO
CHECKED	JKC

- Structural Repair of Concrete (Depth Equal To or Less Than 125 mm)
- Denotes eroded areas requiring backfill. Use Stone Dumped Riprap, Class A4 as backfill material.

**REPAIR PLAN-SN 057-0215  
I-39 OVER F.A.I. ROUTE 55  
SECTION (57-4)RS-3 & 1  
MCLEAN COUNTY  
SN 057-0214 (RAMP A)  
SN 057-0215 (NB I-39)**