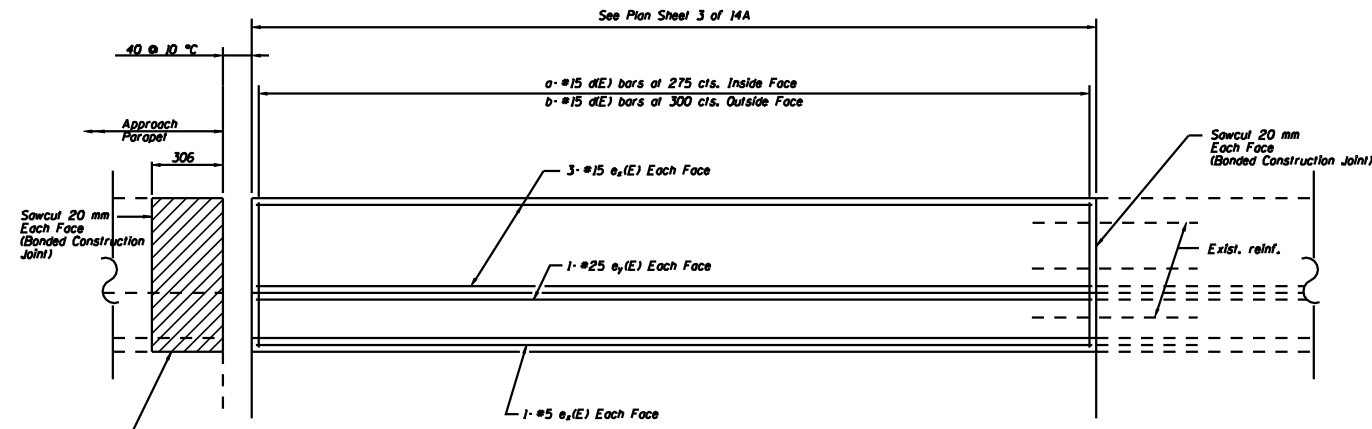


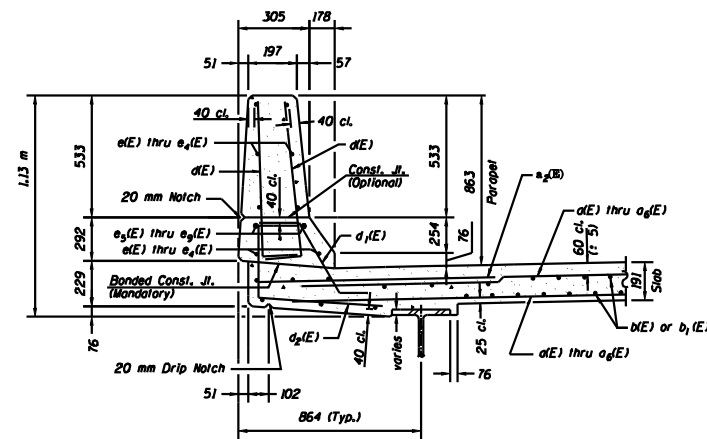
ROUTE NO.	SECTION	COUNTY	POST MILE	POST MILE	SHEET NO. 5
FAI 55	*	MCLEAN	87	73	14A SHEETS
FED. ROAD DIST. NO. 7		ILL. ROAD	FED. ROAD PROJECT		

(57-4)RS-3 & 1

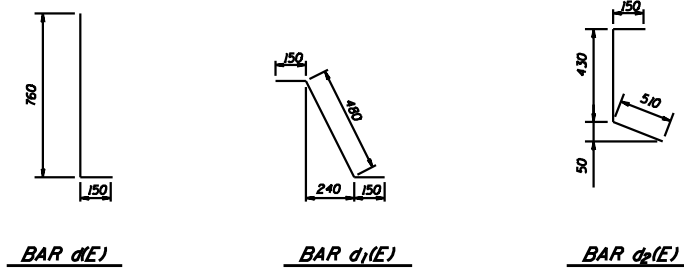


Concrete Removal, Concrete Superstructure,
(For Installation of Preformed Joint Strip Seal,
Clean and Straighten existing reinforcement and
incorporate in new work.)

EXTERIOR PARAPET ELEVATION
(Inside Face of North Parapet Shown)



SECTION THRU EXTERIOR PARAPET



DESIGNED	GAE
CHECKED	JDA
DRAWN	NO
CHECKED	GAE

SOUTH BOUND ROADWAY

Location	a	b	x	y
Stage 1 SW Parapet	12	11	e1(E)	e3(E)
Stage 1 SE Parapet	20	18	e1(E)	e3(E)
Stage 2 NW Parapet	21	19	e3(E)	e3(E)
Stage 2 NE Parapet	12	11	e1(E)	e3(E)

NORTH BOUND ROADWAY

Location	a	b	x	y
Stage 1 NW Parapet	18	16	e2(E)	e1(E)
Stage 1 NE Parapet	12	11	e1(E)	e3(E)
Stage 2 SW Parapet	12	11	e1(E)	e3(E)
Stage 2 SE Parapet	18	16	e2(E)	e3(E)

BILL OF MATERIAL

SOUTH BOUND ROADWAY

Bar	Number	Size	Length (m)	Shape
d(E)	103	#15	16.60	U
d1(E)	27	#20	1.20	Bent
d2(E)	57	#15	10.22	Bent
d3(E)	40	#15	7.79	Bent
e1(E)	8	#20	16.65	U
e2(E)	4	#20	10.24	U
e3(E)	4	#20	7.81	U
b(E)	107	#15	8.39	U
e4(E)	61	#15	0.91	U
d4(E)	32	#15	0.78	Bent
d5(E)	29	#15	1.09	Bent
e5(E)	8	#15	2.90	U
e6(E)	8	#15	5.17	U
e7(E)	8	#15	5.39	U
e8(E)	2	#25	2.90	U
e9(E)	2	#25	5.17	U
e10(E)	2	#25	5.39	U
Reinforcement Bars, Epoxy Coated			kg	7690
Concrete Superstructure			cu m	55.6
Bar Splicers			each	96

NORTH BOUND ROADWAY

Bar	Number	Size	Length (m)	Shape
d1(E)	92	#15	10.74	U
d2(E)	26	#20	1.20	Bent
d3(E)	40	#15	7.78	Bent
d4(E)	49	#15	7.08	Bent
d5(E)	8	#20	10.76	U
d6(E)	4	#20	7.79	U
d7(E)	4	#20	7.09	U
b1(E)	71	#15	7.63	U
d8(E)	57	#15	0.91	U
d9(E)	30	#15	0.78	Bent
d10(E)	27	#15	1.09	Bent
e11(E)	8	#15	2.90	U
e12(E)	8	#15	4.63	U
e13(E)	8	#15	4.56	U
e14(E)	2	#25	2.90	U
e15(E)	2	#25	4.63	U
e16(E)	2	#25	4.56	U
Reinforcement Bars, Epoxy Coated			kg	5180
Concrete Superstructure			cu m	38.0
Bar Splicers			each	90

**STRUCTURAL DETAILS &
BILL OF MATERIALS
F.A.I. 55 OVER CONSTITUTION TRAIL
SECTION (57-4)RS-3 & 1
MCLEAN COUNTY
SN 057-0026 (NB)
SN 057-0027 (SB)
STA. 38+263.167**