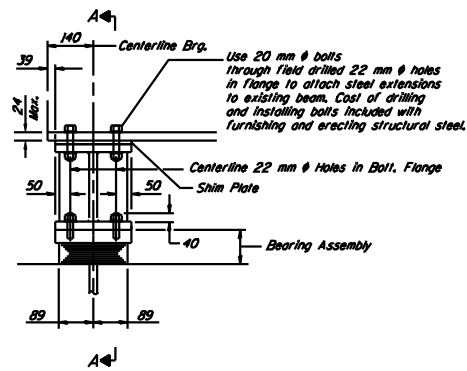
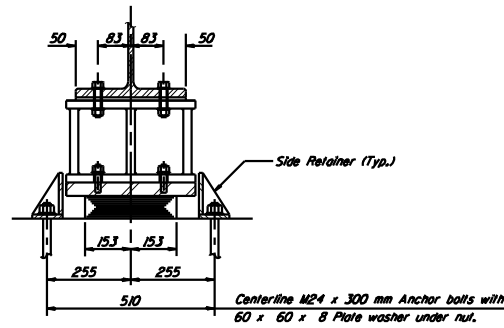


ROUTE NO.	SECTION	COUNTY	DATE	SHEET NO.
FAI 55		MCLEAN	07 75	7
FED. ROAD DIST. NO. 7		ILL. PROJ. NO.	FED. AID PROJECT NO.	14A SHEETS

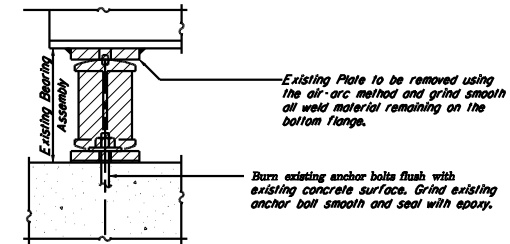
• (57-4)RS-3 & 1



ELEVATION



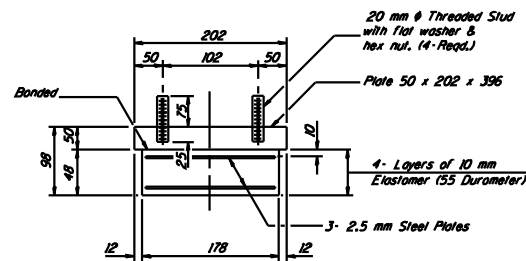
SECTION A-A



EXISTING BEARING REMOVAL DETAIL

Cost is included with "Jack and Remove Existing Bearings".

**TYPE I ELASTOMERIC EXP. BRG.**  
(Cost Abut. B & D)



BEARING ASSEMBLY

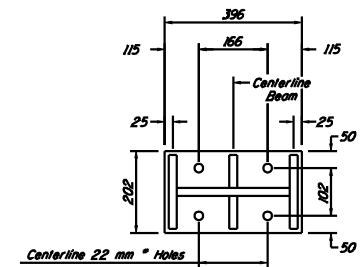
Note: Shim plates shall not be placed under Bearing Assembly.

**BEAM REACTIONS**

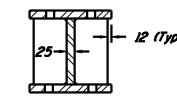
(All Abutments)

BR	(KN)	76
RL	(KN)	172
Imp.	(KN)	50
R (Total)	(KN)	298

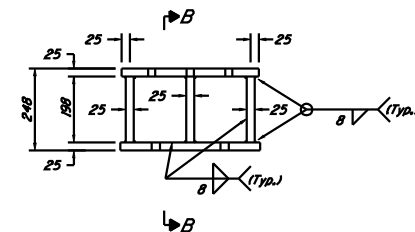
Min. Jack Capacity: 281 kN



TOP & BOTTOM PLAN STEEL EXTENSION



SECTION B-B



ELEVATION STEEL EXTENSION

Notes: Diaphragm removal and replacement may be required to facilitate drilling holes. Cost shall be included in the cost of Furnishing and Erecting Structural Steel.  
New steel extensions, side retainers, shim R's, connection bolts, and anchor bolts are included in Furnishing and Erecting Structural Steel.  
See Sheet #4 of 14A for Anchor Bolt Installation.  
All dimensions are in millimeters (mm) except as noted.  
Prior to ordering any material, the Contractor shall verify in the field all bearing height and shim thickness dimensions.

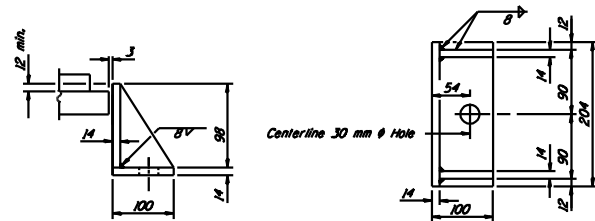
**STEEL EXTENSION DETAILS**

24 Required at Abutments B & D

Note: Contractor shall field measure existing bearings and provide 202 x 266 shims as necessary.

**BILL OF MATERIAL**

Item	Unit	Total
Elastomeric Bearing Assembly Type I	Each	24
Furnishing and Erecting Structural Steel	kg	1820
Jack and Remove Existing Bearing	Each	24



**SIDE RETAINER**

Equivalent rolled angle with stiffeners will be allowed in lieu of welded plates. Weight included with Structural Steel. (No. Req'd 48 @ Abutments B & D)

DESIGNED	GAE
CHECKED	JDA
DRAWN	NO
CHECKED	GAE

**BEARING DETAILS ABUTS. B & D**  
F.A.I. 55 OVER CONSTITUTION TRAIL  
SECTION (57-4)RS-3 & 1  
MCLEAN COUNTY  
SN 057-0026 (NB)  
SN 057-0027 (SB)  
STA. 38+263.167