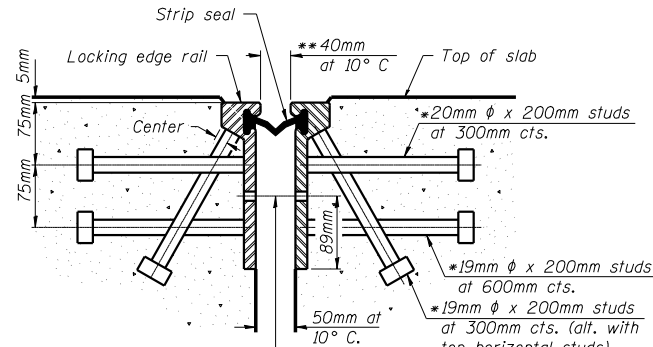


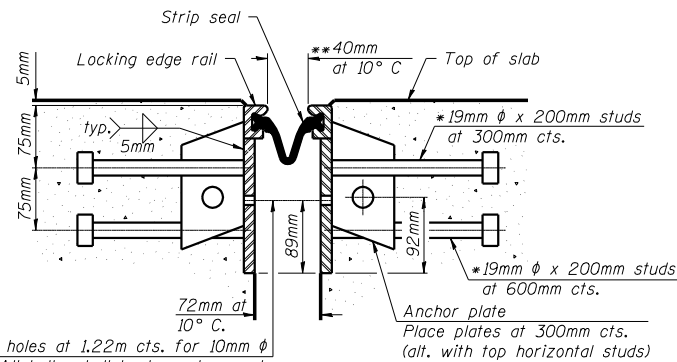
ROUTE NO.	SECTION	COUNTY	STATION	SHEET NO.
FAJ 55		MCLEAN	07	14A
FED. ROAD DIST. NO. 7				14A SHEETS
ILL. PROJ. NO.				
FED. AID PROJECT NO.				

\* Granular or solid flux filled headed studs conforming to Article 1006.32 of the Std. Specs., automatically end welded.

\*\* When joint is fixed, dimension is set at 40mm.



12mm  $\phi$  holes at 1.22m cts. for 10mm  $\phi$  bolts. All bolts shall be burned, sawed, or chipped off flush with the plates after forms are removed, typ.



12mm  $\phi$  holes at 1.22m cts. for 10mm  $\phi$  bolts. All bolts shall be burned, sawed, or chipped off flush with the plates after forms are removed, typ.

Notes:

The strip seal shall be made continuous and shall have a minimum thickness of 5mm. The configuration of the strip seal shall match the configuration of the Locking Edge Rails. Open or "webbed" strip seal gland configurations are not permitted. The gland shall be sized for a maximum rated movement of 4 inches.

The height and thickness of the Locking Edge Rails shown are minimum dimensions. The actual configuration of the Locking Edge Rails and matching strip seal may vary from manufacturer to manufacturer. Flanged edge rails will not be allowed. Locking Edge Rails may be spliced at slope discontinuities and stage construction joints.

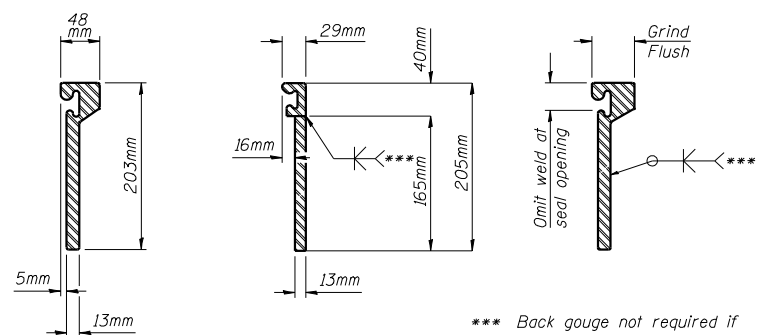
The manufacturer's recommended installation methods shall be followed. The joint opening and deck dimensions detailed on the superstructure are based on a rolled rail expansion joint. If the Contractor elects to use the welded rail expansion joint, the opening and deck dimensions shall be modified according to the dimensions detailed on this sheet. Required modifications shall be made at no additional cost to the State.

All steel components shall be galvanized after fabrication according to Article 520.03 of the Standard Specifications.

All dimensions are in millimeters (mm) except as noted.

**SECTION THRU ROLLED RAIL JOINT**

**SECTION THRU WELDED RAIL JOINT**

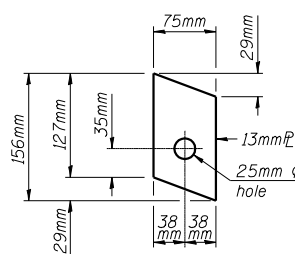


**ROLLED (EXTRUDED) RAIL**    **WELDED RAIL**

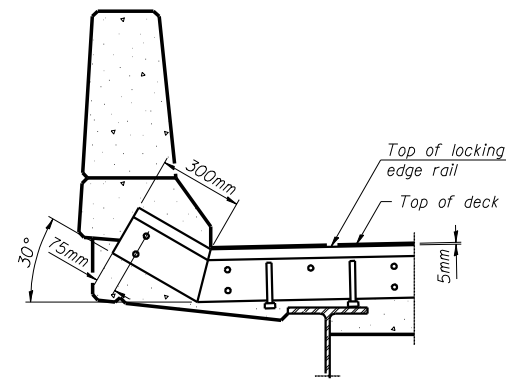
\*\*\* Back gouge not required if complete joint penetration is verified by mock-up.

**LOCKING EDGE RAIL SPLICE**

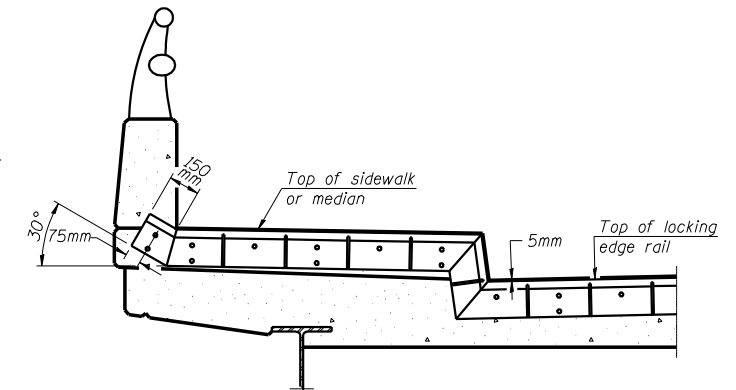
The inside of the locking edge rail groove shall be free of weld residue.



**ANCHOR PLATE**  
(for welded rail)



**AT PARAPET**

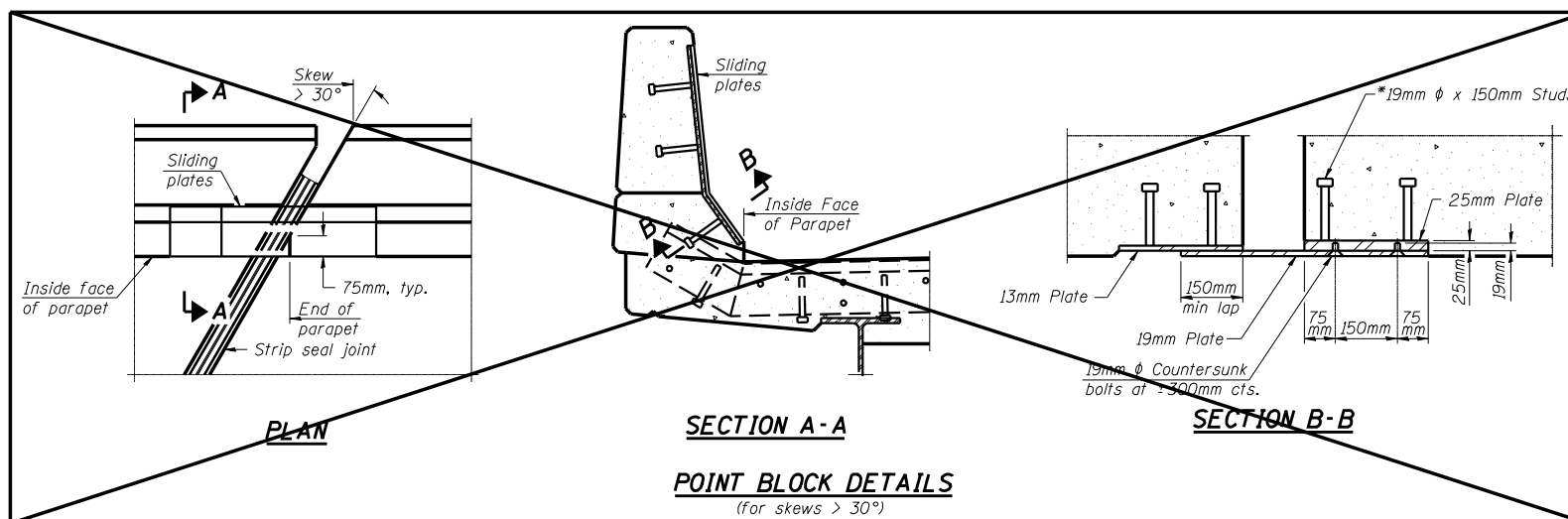


**AT SIDEWALK OR MEDIAN**

Shorter plates with a single row of studs at 300mm cts. may be necessary on medians which are shallower than 230mm. See manufacturer's recommendation.

**TYPICAL END TREATMENTS**

**LOCKING EDGE RAILS**



**SECTION A-A**  
**POINT BLOCK DETAILS**  
(for skews > 30°)

**BILL OF MATERIAL**

Item	Unit	Total
Preformed Joint Strip Seal	Meter	87.3

DESIGNED	JDA
CHECKED	JKC
DRAWN	NO
CHECKED	JDA

EXAMINED	200
PASSED	ENGINEER OF BRIDGE DESIGN
	ENGINEER OF BRIDGES AND STRUCTURES

EJ-SSJ

11-1-06

**PREFORMED JOINT STRIP SEAL**  
**F.A.I. 55 OVER CONSTITUTION TRAIL**  
**SECTION (57-4)RS-3 & 1**  
**MCLEAN COUNTY**  
**SN 057-0026 (NB)**  
**SN 057-0027 (SB)**  
**STA. 38+263.167**