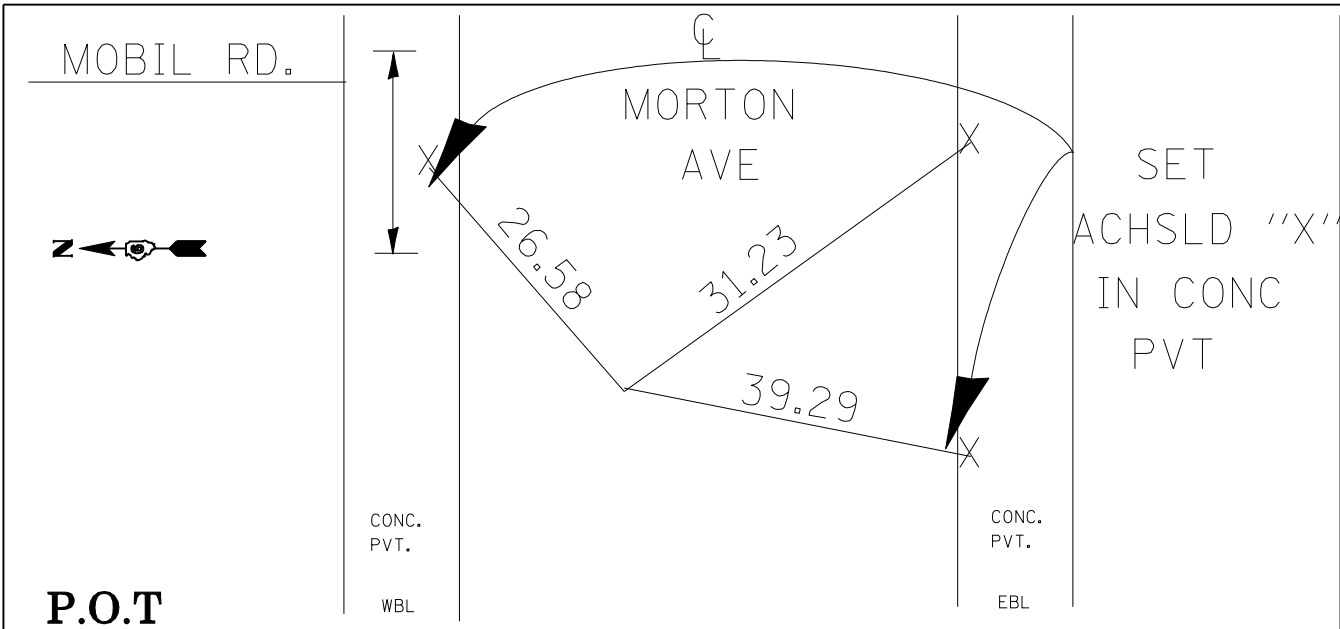
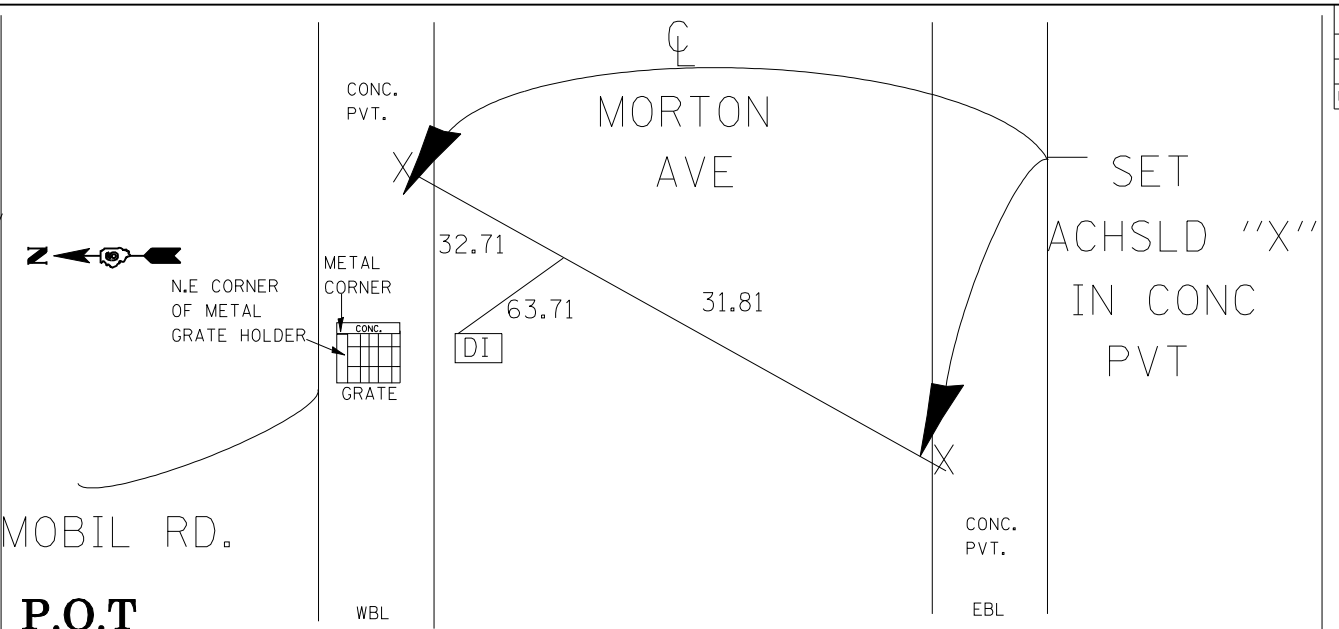


F.A. RTE.	SECTION	COUNTY	TOTAL SHEETS	SHEET NO.
753	25 RS-8, I-2	MORGAN	26	6
STA.		TO STA.		
FED. ROAD DIST. NO.		ILLINOIS	FED. AID PROJECT	



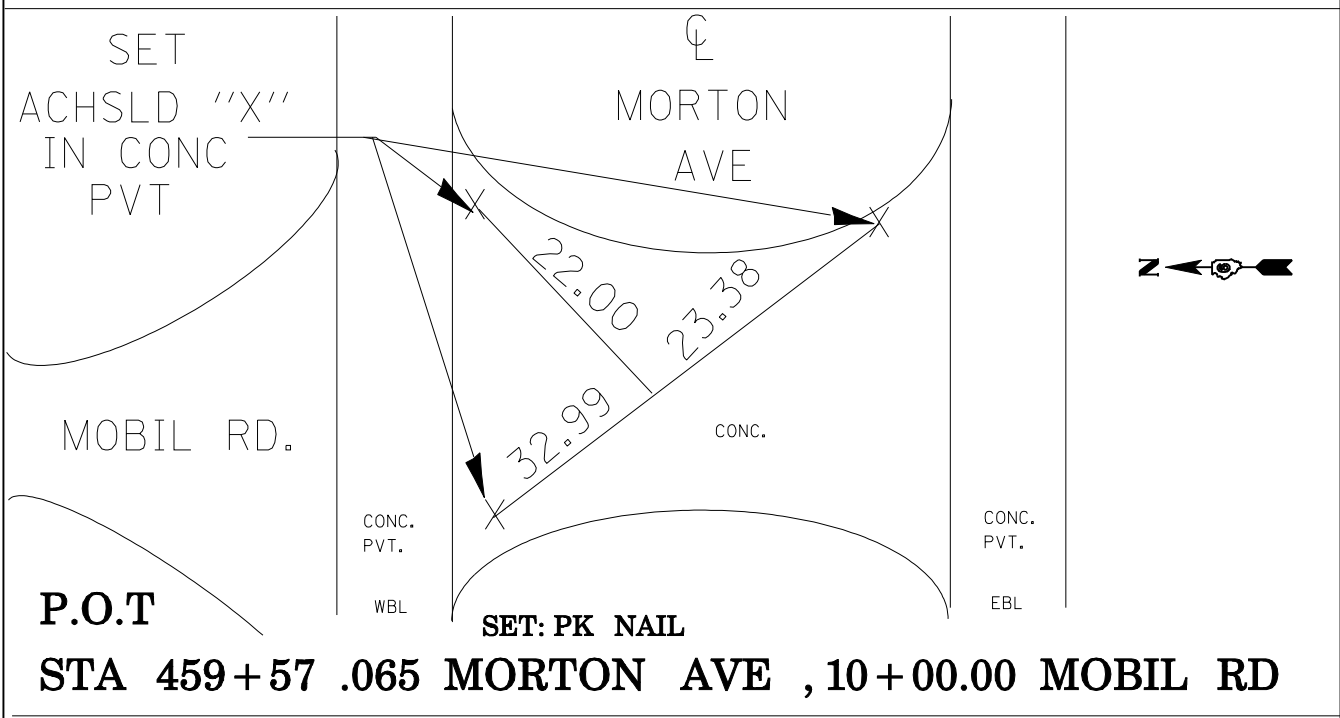
P.O.T
STA 453+00

SET: #4 REBAR W IDOT CAP



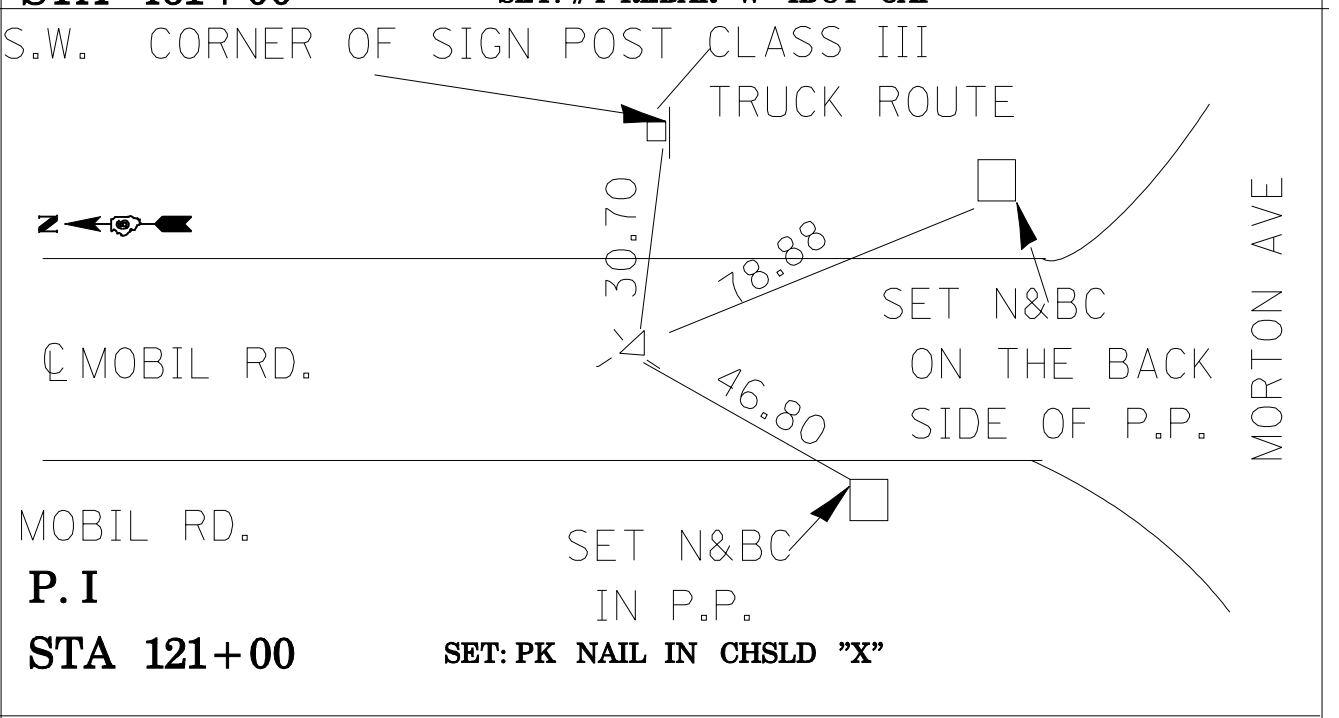
P.O.T
STA 461+00

SET: #4 REBAR W IDOT CAP



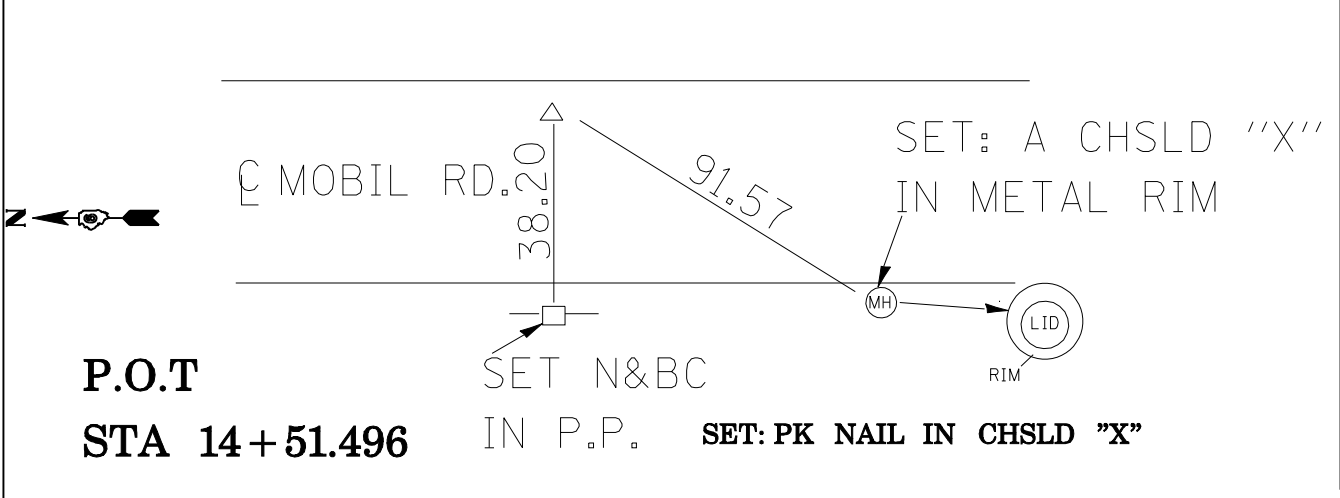
P.O.T
STA 459+57 .065 MORTON AVE , 10+00.00 MOBIL RD

SET: PK NAIL



P.I
STA 121+00

SET: PK NAIL IN CHSLD "X"



P.O.T
STA 14+51.496

SET: PK NAIL IN CHSLD "X"

TBM K-1: CHISELED "X" ON NNW FLANGE BOLT OF FIRE HYDRANT
+/- 60 FT NORTH OF OLD US 36 (E. MORTON AVE.) ;
+/- 57 FT E. OF T-ROAD NORTH 9MOBIL; RD) @ STATION 460+02.14 ; 98.6 LT

REVISIONS	
NAME	DATE

ILLINOIS DEPARTMENT OF TRANSPORTATION
CROSS TIES AND BENCHMARKS
FAP RTE 753 SPUR 90LD US 36) & FAS 1613
SECTION 25RS-8, I-2
MORGAN COUNTY

SCALE: VERT. DRAWN BY
 HORIZ. CHECKED BY
DATE

PLOT DATE = \$DATES
FILE NAME = \$FILEL\$
PLOT SCALE = \$SCALE\$
USER NAME = \$USER\$