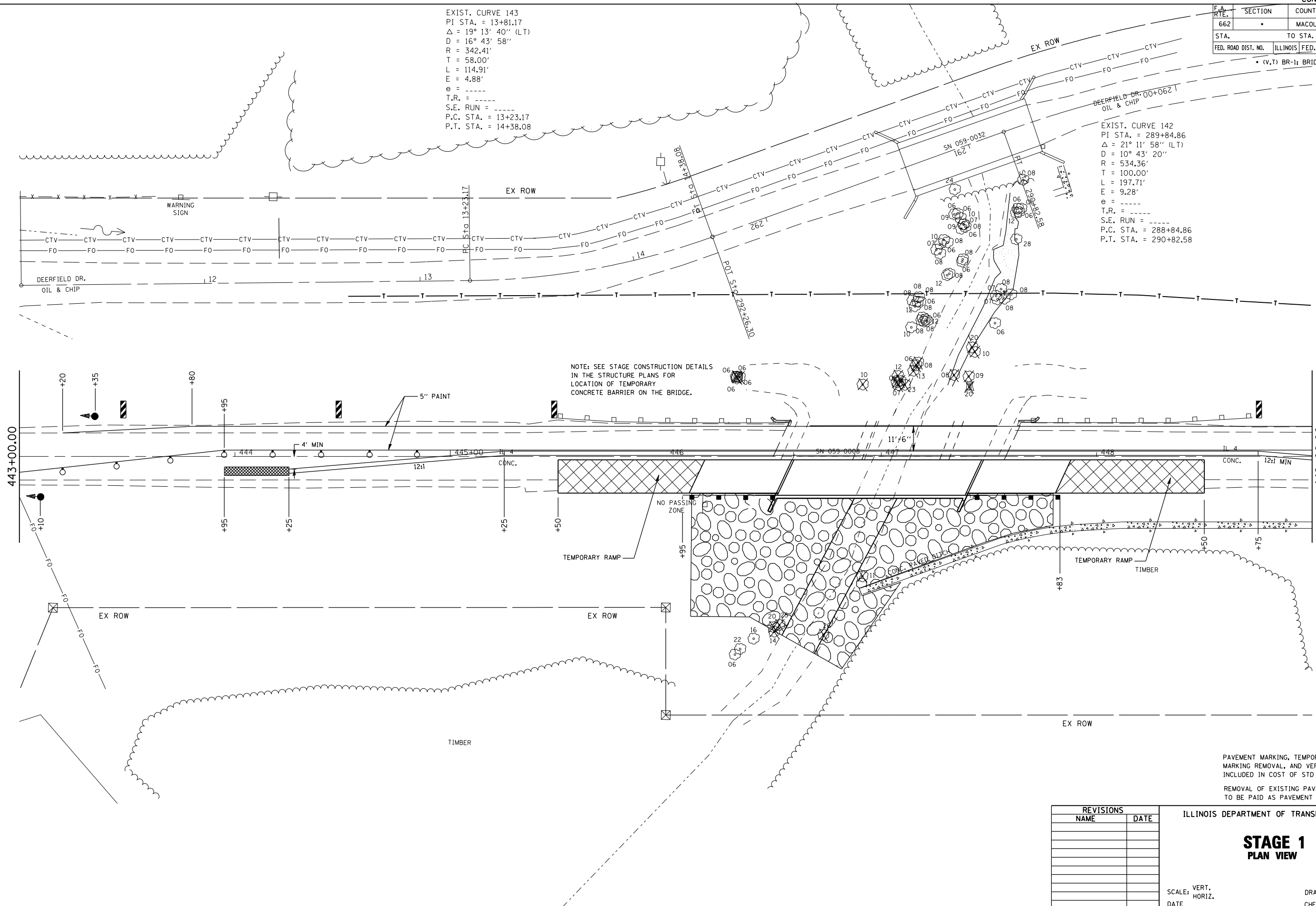


F.A. RTE.	SECTION	COUNTY	TOTAL SHEETS	SHEET NO.
662		MACOUPIN	68	14
STA.		TO STA.		
FED. ROAD DIST. NO.		ILLINOIS FED. AID PROJECT		

EXIST. CURVE 143
 PI STA. = 13+81.17
 $\Delta = 19^\circ 13' 40''$ (LT)
 $D = 16^\circ 43' 58''$
 $R = 342.41'$
 $T = 58.00'$
 $L = 114.91'$
 $E = 4.88'$
 $e = \text{---}$
 $T.R. = \text{---}$
 $S.E. RUN = \text{---}$
 $P.C. STA. = 13+23.17$
 $P.T. STA. = 14+38.08$

EXIST. CURVE 142
 PI STA. = 289+84.86
 $\Delta = 21^\circ 11' 58''$ (LT)
 $D = 10^\circ 43' 20''$
 $R = 534.36'$
 $T = 100.00'$
 $L = 197.71'$
 $E = 9.28'$
 $e = \text{---}$
 $T.R. = \text{---}$
 $S.E. RUN = \text{---}$
 $P.C. STA. = 288+84.86$
 $P.T. STA. = 290+82.58$

(V,T) BR-1: BRIDGE REMOVAL



NOTE: SEE STAGE CONSTRUCTION DETAILS IN THE STRUCTURE PLANS FOR LOCATION OF TEMPORARY CONCRETE BARRIER ON THE BRIDGE.

PAVEMENT MARKING, TEMPORARY PAVEMENT MARKING REMOVAL, AND VERTICAL PANELS INCLUDED IN COST OF STD 701321
 REMOVAL OF EXISTING PAVEMENT MARKING TO BE PAID AS PAVEMENT MARKING REMOVAL

REVISIONS	
NAME	DATE

ILLINOIS DEPARTMENT OF TRANSPORTATION
STAGE 1
PLAN VIEW
 SCALE: VERT. / HORIZ.
 DATE
 DRAWN BY: BDK
 CHECKED BY: JCN

PLOT DATE = 3/13/2007
 FILE NAME = c:\projects\662993\shots\stage1.dgn
 PLOT SCALE = 42.3525' / IN.
 REFERENCE = #REF#