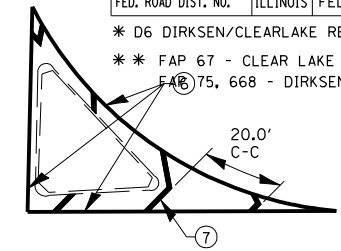


FAP RTE.	SECTION	COUNTY	TOTAL SHEETS	SHEET NO.
**	*	SANGAMON	14	11
STA.		TO STA.		
FED. ROAD DIST. NO.	ILLINOIS	FED. AID PROJECT		

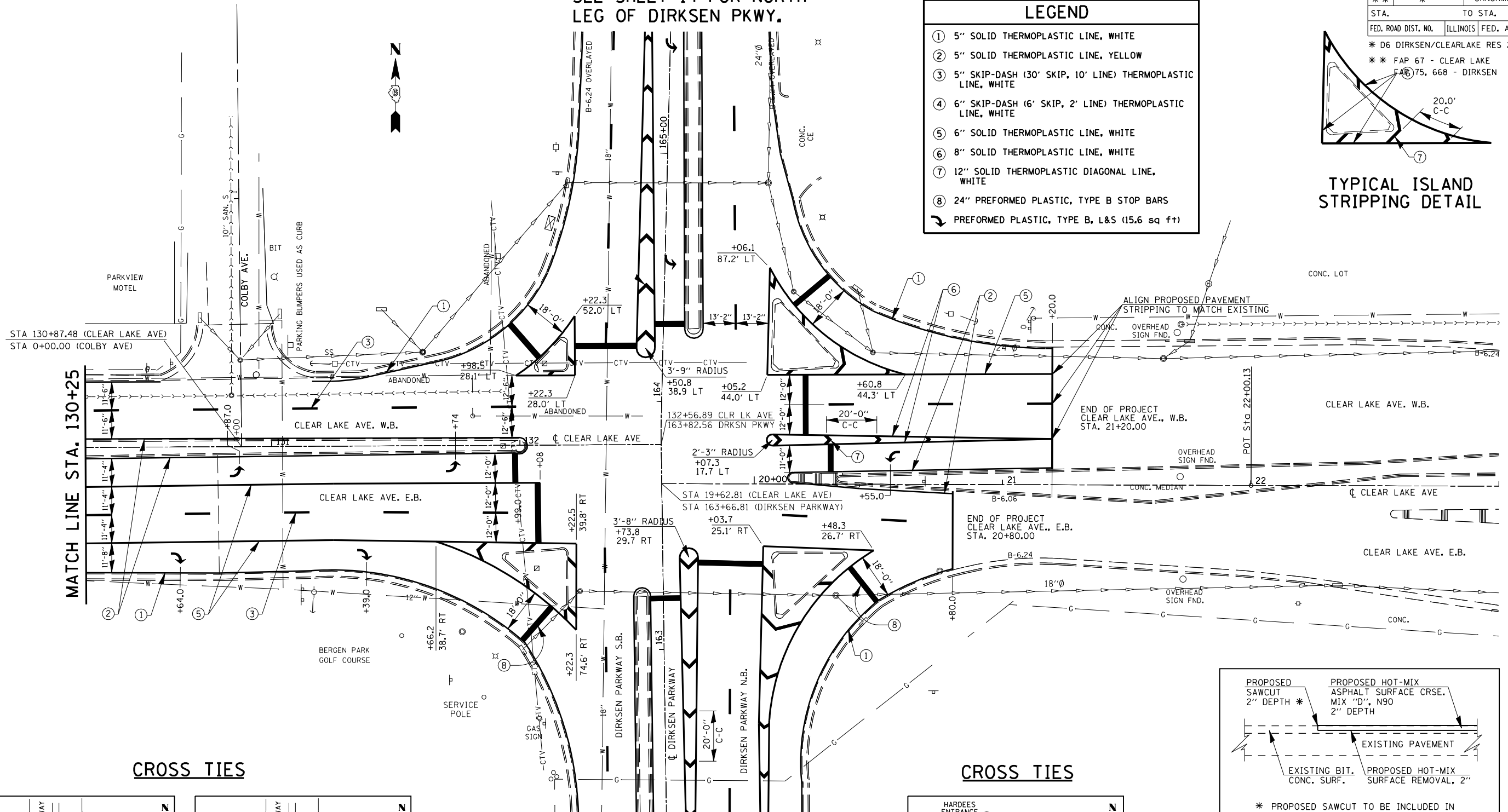
* D6 DIRKSEN/CLEARLAKE RES 2007
 ** FAP 67 - CLEAR LAKE
 F&B 75, 668 - DIRKSEN



TYPICAL ISLAND STRIPPING DETAIL

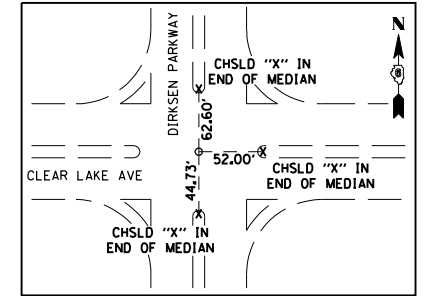
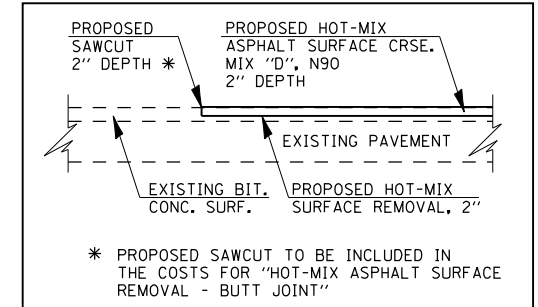
LEGEND	
①	5" SOLID THERMOPLASTIC LINE, WHITE
②	5" SOLID THERMOPLASTIC LINE, YELLOW
③	5" SKIP-DASH (30' SKIP, 10' LINE) THERMOPLASTIC LINE, WHITE
④	6" SKIP-DASH (6' SKIP, 2' LINE) THERMOPLASTIC LINE, WHITE
⑤	6" SOLID THERMOPLASTIC LINE, WHITE
⑥	8" SOLID THERMOPLASTIC LINE, WHITE
⑦	12" SOLID THERMOPLASTIC DIAGONAL LINE, WHITE
⑧	24" PREFORMED PLASTIC, TYPE B STOP BARS
↪	PREFORMED PLASTIC, TYPE B, L&S (15.6 sq ft)

SEE SHEET 14 FOR NORTH LEG OF DIRKSEN PKWY.

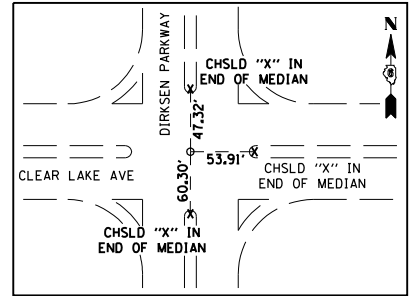


CROSS TIES

CROSS TIES



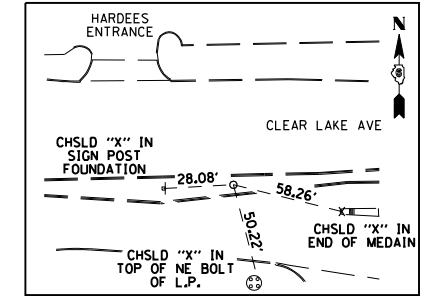
POT STA. 163+66.81 (DIRKSEN PARKWAY)
 POT STA. 19+62.81 (CLEAR LAKE AVE)
 (PK IN CHSLD "X")



POT STA. 163+82.56 (DIRKSEN PARKWAY)
 POT STA. 132+56.89 (CLEAR LAKE AVE)
 (ALUM DISK (SECTION CORNER))

SEE SHEETS 12 & 13 FOR SOUTH LEG OF DIRKSEN PKWY.

NOTE:
 ALL STATION AND OFFSET CALLOUTS ON THIS SHEET ARE REFERENCED OFF OF THE CENTERLINE FOR CLEARLAKE AVENUE.



POT STA. 22+00.13 (CLEAR LAKE AVE)
 (STAR DRILL IN CHSLD "X")

ILLINOIS DEPARTMENT OF TRANSPORTATION
PLAN & PAVEMENT MARKING DETAILS
CLEAR LAKE AVENUE
SECTION: D6 DIRKSEN/CLEARLAKE RES 2007
SANGAMON COUNTY