

F.A.P. RTE.	SECTION	COUNTY	TOTAL SHEETS	SHEET NO.
320		MACON	31	1

• (101)RS-3, 101B-1

STATE OF ILLINOIS
DEPARTMENT OF TRANSPORTATION
DIVISION OF HIGHWAYS

**PROPOSED
HIGHWAY PLANS**

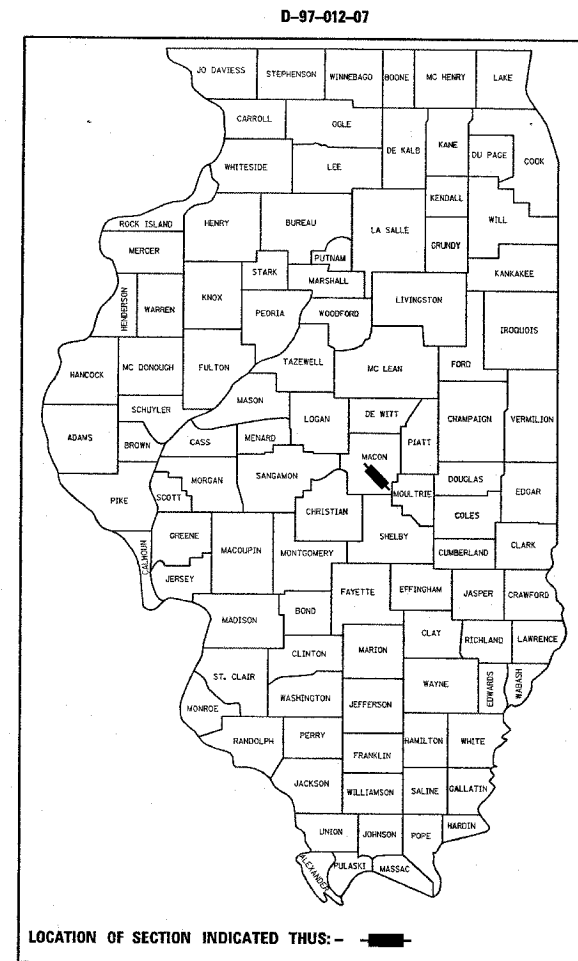
FAP ROUTE 320(IL 121)
SECTION (101)RS-3, 101 B-1
PROJECT : MA-0320(032)
MACON COUNTY
RESURFACING & BOX CULVERT REMOVAL
AND REPLACEMENT

C-97-013-07

FOR INDEX OF SHEETS, SEE SHEET NO. 2

STATION EQUATIONS

STA 870+04.21 BK = STA 60+44.79 AH
STA 236+89.79 BK = STA 236+73.58 AH
STA 264+13.49 BK = STA 265+85.36 AH

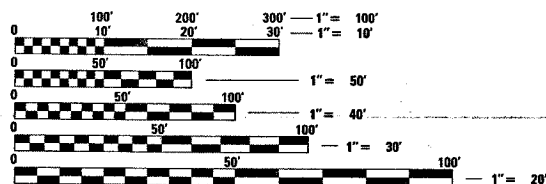


2006 ADT = 6500

PROJECT ENDS
STA 287+31.6

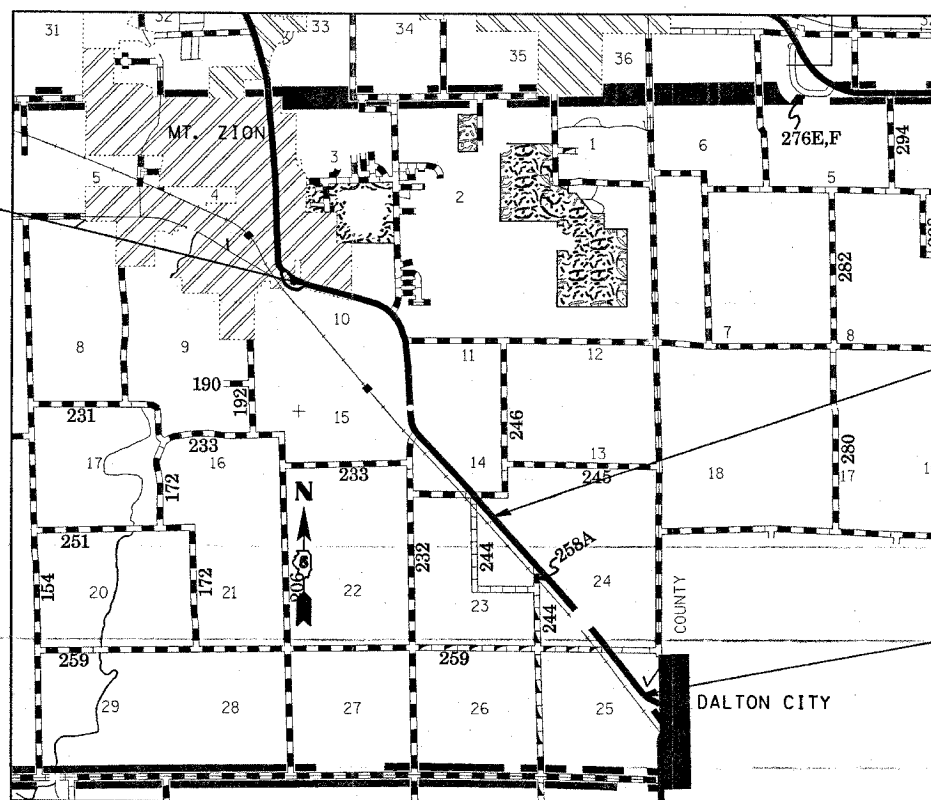
STA 149+88.5
SN 058-8324
DOUBLE 12X4X48' 6"
PRECAST CONCRETE
BOX CULVERT

PROJECT BEGINS
STA 869+00



FULL SIZE PLANS HAVE BEEN PREPARED USING STANDARD ENGINEERING SCALES. REDUCED SIZED PLANS WILL NOT CONFORM TO STANDARD SCALES. IN MAKING MEASUREMENTS ON REDUCED PLANS, THE ABOVE SCALES MAY BE USED.

J.U.L.I.E.
JOINT UTILITY LOCATION INFORMATION FOR EXCAVATION
1-800-892-0123



PROJECT ENGINEER :
SQUAD LEADER : JOYCE HEMMEN
DESIGNER : JOYCE HEMMEN
TELEPHONE : 217/342-3951 EX 313

STATE OF ILLINOIS
DEPARTMENT OF TRANSPORTATION
DIVISION OF HIGHWAYS

SUBMITTED FEB 7, 20 07
Christ H. Reed
DEPUTY DIRECTOR OF HIGHWAYS, REGION ENGINEER

March 23, 20 07
Eric E. Harrel
ENGINEER OF DESIGN AND ENVIRONMENT

March 23, 20 07
Milton R. Sewell
DIRECTOR OF HIGHWAYS, CHIEF ENGINEER

**PRINTED BY THE AUTHORITY
OF THE STATE OF ILLINOIS**

CONTRACT NO. 74225

GROSS LENGTH = 22635.30 FEET = 4.29 MILES
NET LENGTH = 22635.30 FEET = 4.29 MILES