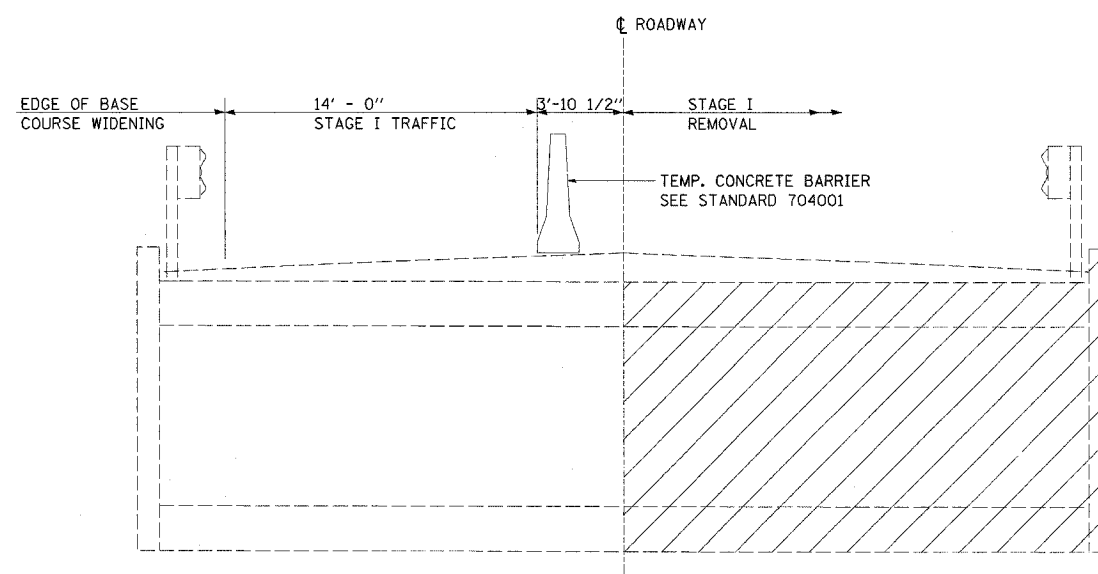
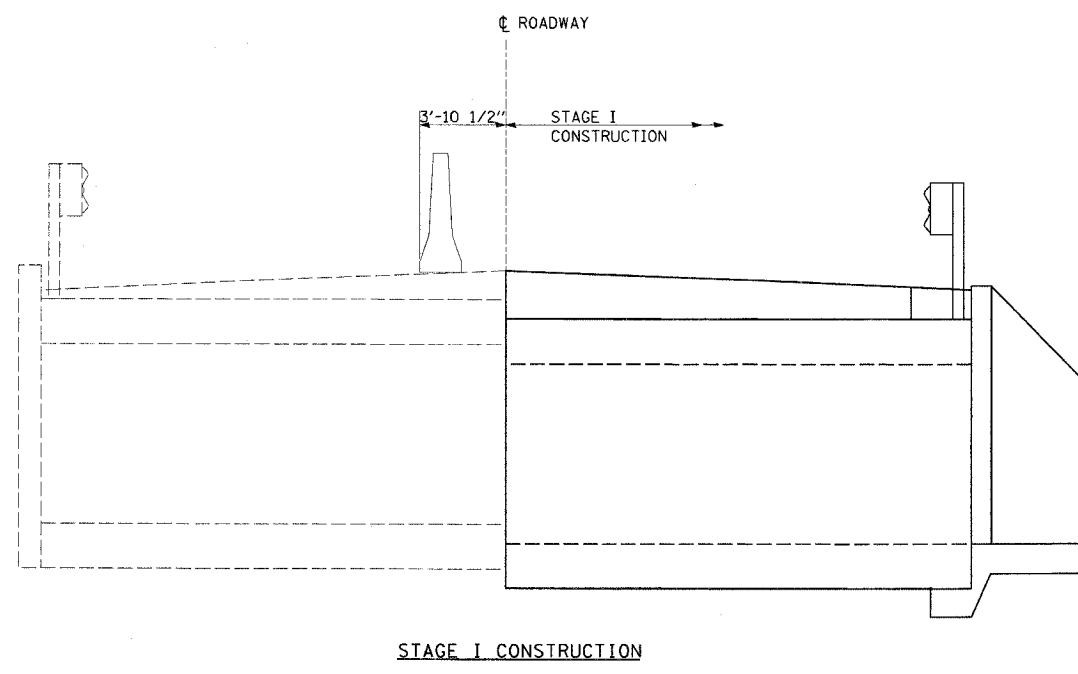


| | | | | |
|---------------------|----------|------------------|--------------|-----------|
| F.A.P. RTE. | SECTION | COUNTY | TOTAL SHEETS | SHEET NO. |
| 320 | | MACON | 31 | 27 |
| STA. | TO STA. | | | |
| FED. ROAD DIST. NO. | ILLINOIS | FED. AID PROJECT | | |
| • (101)RS-3, 101B-1 | | | | |



STAGE I REMOVAL

NOTES: ALL STAGING CROSS SECTIONS ARE LOOKING NORTHWEST. HATCHED AREA INDICATES REMOVAL OF EXISTING STRUCTURES. FOR QUANTITY OF TEMPORARY CONCRETE BARRIER, SEE ROADWAY PLANS.



STAGE I CONSTRUCTION

PLOT DATE = #DATE*
 FILE NAME = #FILE#*
 PLOT SCALE = #SCALE*
 USER NAME = #USER#

| REVISIONS | |
|-----------|------|
| NAME | DATE |
| | |
| | |
| | |
| | |
| | |
| | |
| | |
| | |
| | |
| | |

ILLINOIS DEPARTMENT OF TRANSPORTATION

STAGE I CONSTRUCTION
 DETAIL

SCALE: VERT.
 HORIZ.
 DATE

DRAWN BY
 CHECKED BY