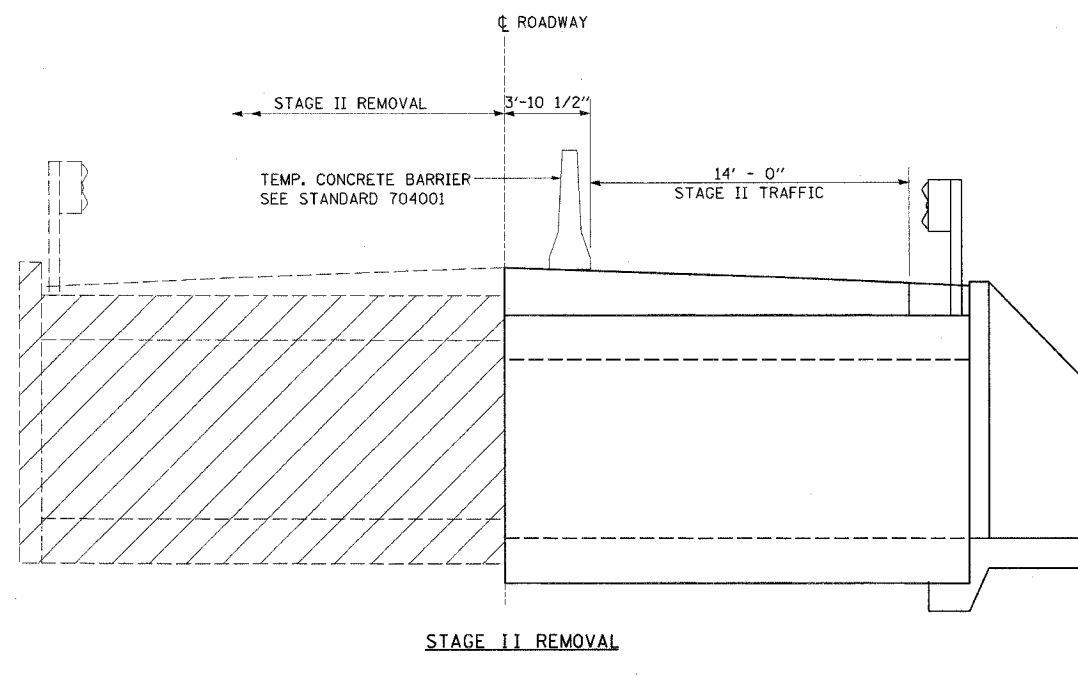
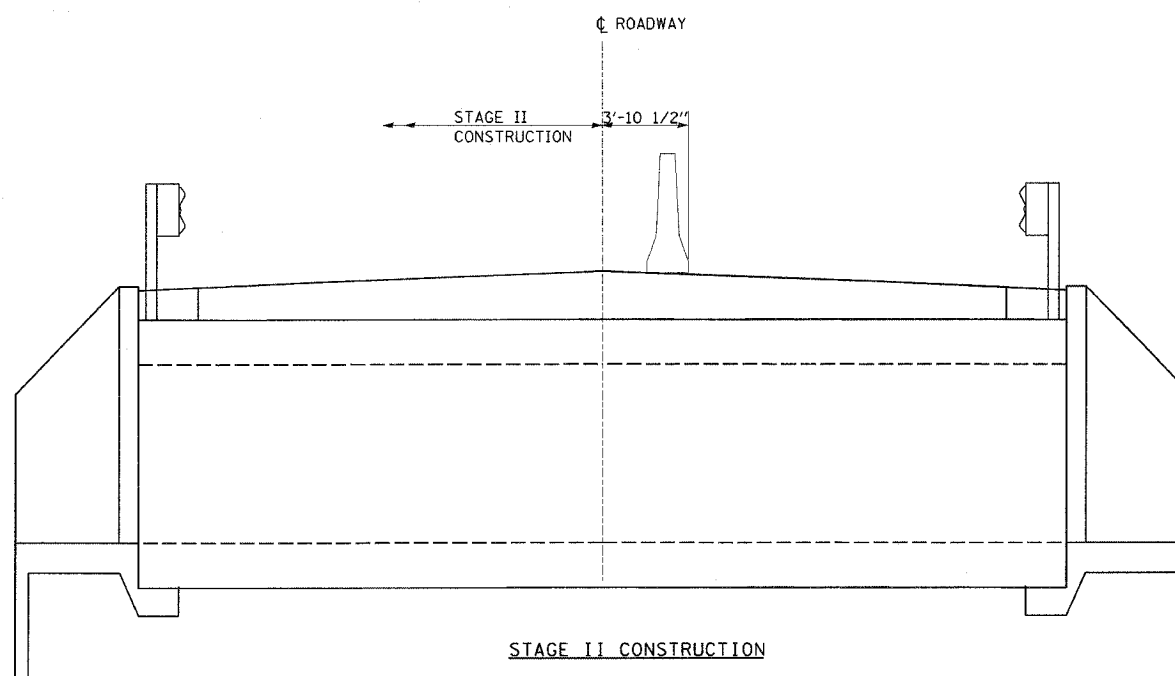


F.A.P. RTE.	SECTION	COUNTY	TOTAL SHEETS	SHEET NO.
320		MACON	31	26
STA.	TO STA.			
FED. ROAD DIST. NO.	ILLINOIS	FED. AID PROJECT		
• (10)RS-3, 101B-1				



STAGE II REMOVAL

NOTES: ALL STAGING CROSS SECTIONS ARE LOOKING NORTHWEST. HATCHED AREA INDICATES REMOVAL OF EXISTING STRUCTURES. FOR QUANTITY OF TEMPORARY CONCRETE BARRIER, SEE ROADWAY PLANS.



STAGE II CONSTRUCTION

PLOT DATE = #DATE*
 FILE NAME = #FILE#*
 USER NAME = #USER#*

REVISIONS		ILLINOIS DEPARTMENT OF TRANSPORTATION
NAME	DATE	
		STAGE II CONSTRUCTION DETAIL

SCALE: VERT. HORIZ.
 DATE

DRAWN BY
 CHECKED BY