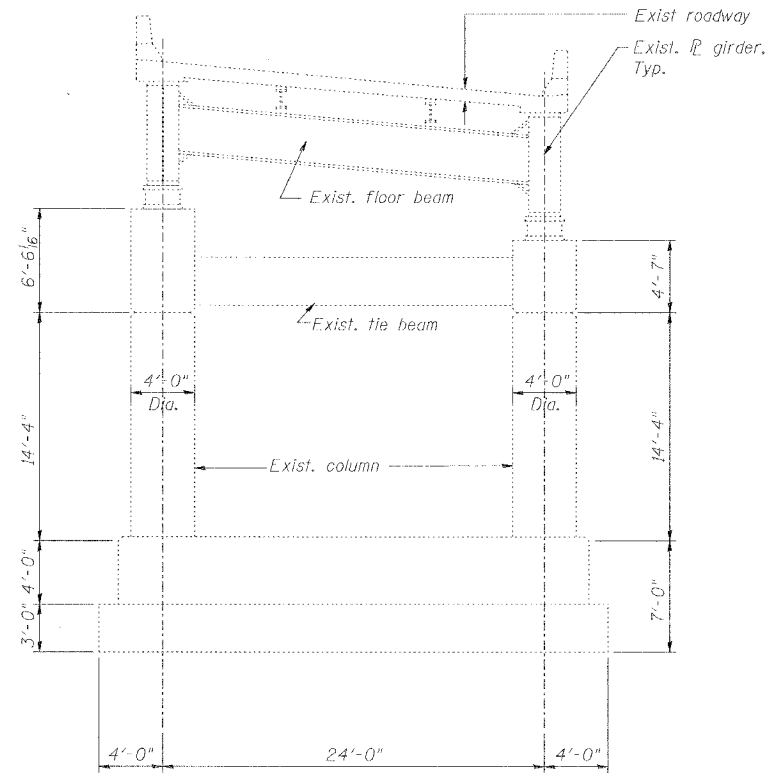


ROUTE NO.	SECTION	COUNTY	JULIA SHEETS	SHEET NO.
F.A.I. 70	*	ST. CLAIR	99	85
FED. ROAD DIST. NO. 7	ILLINOIS	FED. AID PROJECT - 1M-70		

• 82-3HVB-3R-5 SHEET S-8 OF S-22
CONTRACT NO. 76985



TYPICAL SECTION THROUGH TWO - GIRDER ROADWAY (PIER T5 SHOWN)

DATE: 12/4/2007
FILENAME: P:\2001\1201-1300\2001.12.40\Drafting\Roadway\Rehab_AT\ Ramp T\ demo\ t-demo1.dgn

DESIGNED	JEL
CHECKED	HH
DRAWN	CLK
CHECKED	JEL

TYPICAL STRUCTURAL DETAILS

REVISIONS		STATE OF ILLINOIS DEPARTMENT OF TRANSPORTATION REHABILITATION AND RETROFIT REPAIRS FAI ROUTE 70 POPLAR STREET BRIDGE APPROACHES ST. CLAIR COUNTY STRUCTURE NO. 082-0146 (Ramp T) SCALE: N.T.S. DATE: 02/01/2007
NAME	DATE	