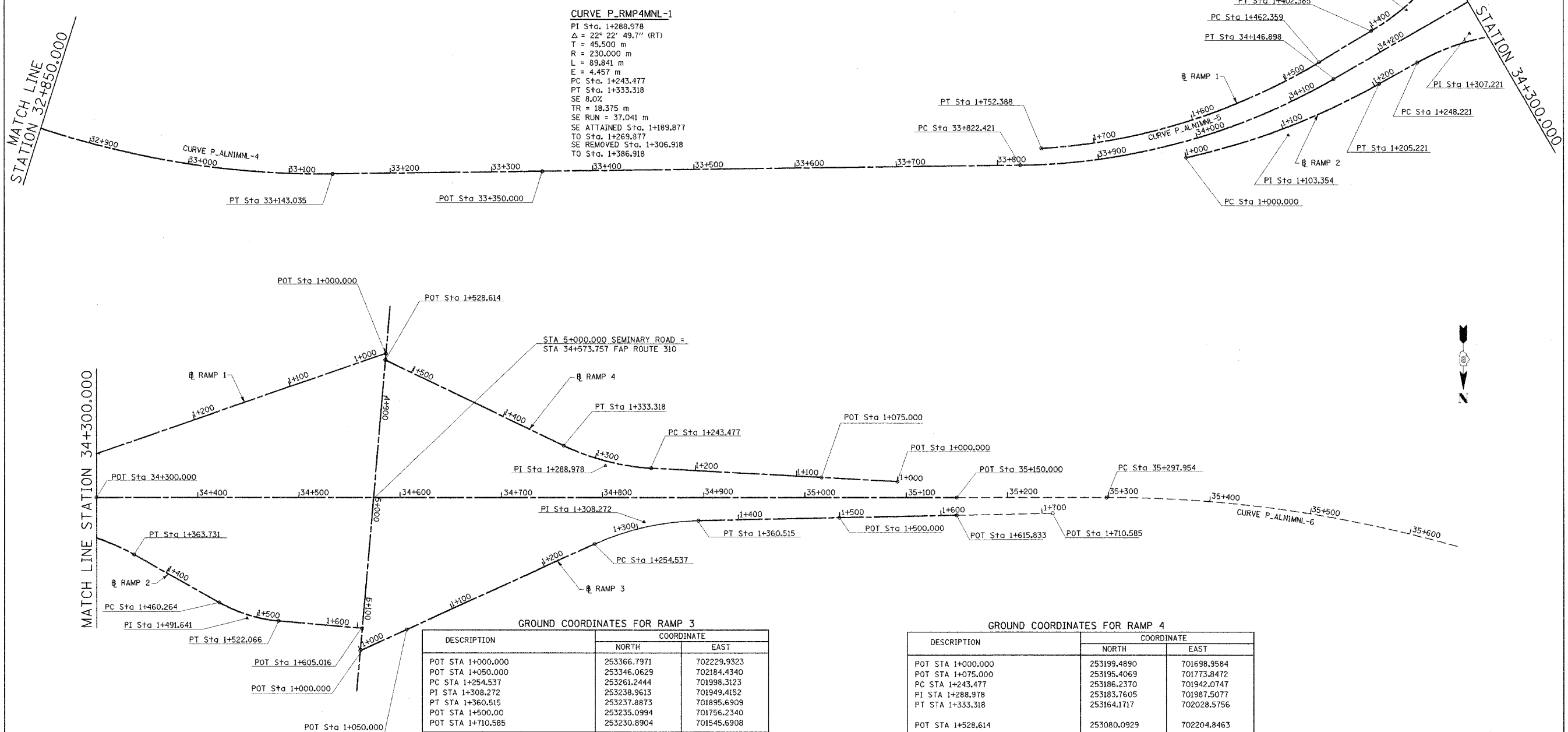


| F.A.P. RTE.         | SECTION | COUNTY                    | TOTAL SHEETS | SHEET NO. |
|---------------------|---------|---------------------------|--------------|-----------|
| 310                 | *       | MADISON                   | 418          | 21        |
| STA. 32+850.000     |         | TO STA. 35+650.000        |              |           |
| FED. ROAD DIST. NO. |         | ILLINOIS FED. AID PROJECT |              |           |

| CURVE P-ALN1MNL-4   | CURVE P-ALN1MNL-5   | CURVE P-ALN1MNL-6  | CURVE P-RMP1MNL-1   | CURVE P-RMP1MNL-2  | CURVE P-RMP2MNL-1   | CURVE P-RMP2MNL-2  | CURVE P-RMP2MNL-3   | CURVE P-RMP3MNL-1  |
|---|---|--|---|--|---|--|---|--|
| PI Sta. 32+930.726<br>Δ = 28° 24' 02.2" (LT)<br>T = 221.414 m<br>R = 875.000 m<br>L = 433.723 m<br>E = 27.579 m<br>PC Sta. 32+709.312<br>PT Sta. 33+143.035<br>SE 5.2%<br>TR = 65.000 m<br>SE RUN = 65.000 m<br>SE ATTAINED Sta. 32+652.262<br>TO Sta. 32+730.762<br>SE REMOVED Sta. 33+121.585<br>TO Sta. 33+200.085 | PI Sta. 33+988.284<br>Δ = 29° 16' 39" (LT)<br>T = 165.863 m<br>R = 635.000 m<br>L = 324.476 m<br>E = 21.304 m<br>PC Sta. 33+822.421<br>PT Sta. 34+146.898<br>SE 5.9%<br>TR = 65.000 m<br>SE RUN = 65.000 m<br>SE ATTAINED Sta. 33+765.371<br>TO Sta. 33+843.871<br>SE REMOVED Sta. 34+125.448<br>TO Sta. 34+203.948 | PI Sta. 36+194.086<br>Δ = 70° 24' 53.2" (RT)<br>T = 896.132 m<br>R = 1,270.000 m<br>L = 1,560.792 m<br>E = 284.333 m<br>PC Sta. 35+297.954<br>PT Sta. 36+858.745<br>SE 4.1%<br>TR = 13.5 m<br>SE RUN = 1517.891 m<br>SE ATTAINED Sta. 35+240.904<br>TO Sta. 35+319.404<br>SE REMOVED Sta. 36+837.295<br>TO Sta. 36+915.795 | PI Sta. 1+362.205<br>Δ = 17° 50' 33.9" (RT)<br>T = 40.814 m<br>R = 260.000 m<br>L = 80.968 m<br>E = 3.184 m<br>PC Sta. 1+321.391<br>PT Sta. 1+402.358<br>SE 8.0%<br>TR = 18.375 m<br>SE RUN = 10.911 m<br>SE ATTAINED Sta. 1+276.131<br>TO Sta. 1+356.131<br>SE REMOVED Sta. 1+367.042<br>TO Sta. 1+407.042 | PI Sta. 1+610.213<br>Δ = 27° 27' 07.4" (RT)<br>T = 147.854 m<br>R = 605.326 m<br>L = 290.029 m<br>E = 17.795 m<br>PC Sta. 1+462.359<br>PT Sta. 1+752.388<br>SE 5.9%<br>TR = 18.375 m<br>SE RUN = 10.911 m<br>SE ATTAINED Sta. 1+418.877<br>TO Sta. 1+269.877<br>SE REMOVED Sta. 1+306.918<br>TO Sta. 1+386.918 | PI Sta. 1+103.354<br>Δ = 16° 49' 13.7" (LT)<br>T = 103.354 m<br>R = 699.046 m<br>L = 205.221 m<br>E = 7.599 m<br>PC Sta. 1+000.000<br>PT Sta. 1+205.221<br>SE 8.0%<br>TR = 18.375 m<br>SE RUN = 68.110 m<br>SE ATTAINED Sta. 1+000.000<br>TO Sta. 1+269.221<br>SE REMOVED Sta. 1+337.331<br>TO Sta. 1+417.331 | PI Sta. 1+307.221<br>Δ = 28° 46' 29.6" (RT)<br>T = 59.000 m<br>R = 230.000 m<br>L = 115.510 m<br>E = 7.447 m<br>PC Sta. 1+248.221<br>PT Sta. 1+363.731<br>SE 8.0%<br>TR = 18.375 m<br>SE RUN = 68.110 m<br>SE ATTAINED Sta. 1+000.000<br>TO Sta. 1+269.221<br>SE REMOVED Sta. 1+337.331<br>TO Sta. 1+417.331 | PI Sta. 1+491.641<br>Δ = 24° 25' 14.8" (LT)<br>T = 31.377 m<br>R = 145.000 m<br>L = 61.802 m<br>E = 3.356 m<br>PC Sta. 1+460.264<br>PT Sta. 1+522.066<br>SE 7.84%<br>TR = 18.375 m<br>SE RUN = 7.852 m<br>SE ATTAINED Sta. 1+417.331<br>TO Sta. 1+481.714<br>SE REMOVED Sta. 1+489.566<br>TO Sta. 1+554.566 | PI Sta. 1+308.272<br>Δ = 23° 21' 15.2" (RT)<br>T = 53.735 m<br>R = 260.000 m<br>L = 105.978 m<br>E = 5.495 m<br>PC Sta. 1+254.537<br>PT Sta. 1+360.515<br>SE 8.0%<br>TR = 18.375 m<br>SE RUN = 39.578 m<br>SE ATTAINED Sta. 1+200.937<br>TO Sta. 1+280.937<br>SE REMOVED Sta. 1+320.515<br>TO Sta. 1+400.515 |



**GROUND COORDINATES FOR RAMP 1**

| DESCRIPTION       | COORDINATE  |             |
|-------------------|-------------|-------------|
|                   | NORTH       | EAST        |
| POT STA 1+000.000 | 253073.7248 | 702204.2891 |
| PC STA 1+321.391  | 253178.3567 | 702508.1708 |
| PI STA 1+362.205  | 253191.6441 | 702546.7616 |
| PT STA 1+402.358  | 253192.4681 | 702587.5675 |
| PC STA, 1+462.359 | 253193.5414 | 702647.5582 |
| PI STA 1+610.213  | 253196.1861 | 702795.3885 |
| PT STA 1+752.388  | 253130.3823 | 702927.7920 |

**GROUND COORDINATES FOR RAMP 2**

| DESCRIPTION       | COORDINATE  |             |
|-------------------|-------------|-------------|
|                   | NORTH       | EAST        |
| PC STA 1+000.000  | 253209.5854 | 702808.6262 |
| PI STA 1+103.354  | 253240.6075 | 702710.0379 |
| PT STA 1+205.221  | 253241.7736 | 702606.6906 |
| PC STA 1+248.221  | 253242.2587 | 702563.6933 |
| PI STA 1+307.221  | 253242.9243 | 702504.6968 |
| PT STA 1+363.731  | 253271.9069 | 702453.3057 |
| PC STA, 1+460.264 | 253319.3264 | 702369.2227 |
| PI STA 1+491.641  | 253334.7400 | 702341.8918 |
| PT STA 1+522.066  | 253337.4750 | 702310.6336 |
| POT STA 1+605.016 | 253344.7054 | 702227.9993 |

**GROUND COORDINATES FOR FAP 310, (MAINLINE)**

| DESCRIPTION         | COORDINATE  |             |
|---------------------|-------------|-------------|
|                     | NORTH       | EAST        |
| PI STA 32+930.726   | 252693.5320 | 703739.7940 |
| PT STA 33+143.035   | 252801.8136 | 703546.6639 |
| POT STA 33+350.000  | 252903.0287 | 703366.1375 |
| PC STA 33+822.421   | 253134.0643 | 702954.0644 |
| PI STA 33+988.284   | 253215.1790 | 702809.3890 |
| PT STA 34+146.898   | 253215.1805 | 702643.5259 |
| POT STA 34+300.000  | 253215.1819 | 702490.4235 |
| POT STA, 34+573.757 | 253215.1844 | 702216.6665 |
| POT STA 35+150.000  | 253215.1891 | 701690.4235 |
| PC STA, 35+297.954  | 253215.1909 | 701492.4699 |
| PI STA 36+194.086   | 253215.1990 | 700596.3380 |
| PT STA 36+858.745   | 254059.4870 | 700295.9546 |

**GROUND COORDINATES FOR RAMP 3**

| DESCRIPTION       | COORDINATE  |             |
|-------------------|-------------|-------------|
|                   | NORTH       | EAST        |
| POT STA 1+000.000 | 253366.7971 | 702229.9323 |
| POT STA 1+050.000 | 253346.0629 | 702184.4340 |
| PC STA 1+254.537  | 253261.2444 | 701998.3123 |
| PI STA 1+308.272  | 253238.9613 | 701949.4152 |
| PT STA 1+360.515  | 253237.8873 | 701895.6909 |
| POT STA 1+500.000 | 253235.0994 | 701756.2340 |
| POT STA 1+710.585 | 253230.8904 | 701545.6908 |

**GROUND COORDINATES FOR RAMP 4**

| DESCRIPTION       | COORDINATE  |             |
|-------------------|-------------|-------------|
|                   | NORTH       | EAST        |
| POT STA 1+000.000 | 253199.4890 | 701698.9584 |
| POT STA 1+075.000 | 253195.4069 | 701773.8472 |
| PC STA 1+243.477  | 253186.2370 | 701942.0747 |
| PI STA 1+288.978  | 253183.7605 | 701987.5077 |
| PT STA 1+333.318  | 253164.1717 | 702028.5756 |
| POT STA 1+528.614 | 253080.0929 | 702204.8463 |



| REVISIONS |      |
|-----------|------|
| NAME      | DATE |
|           |      |
|           |      |
|           |      |
|           |      |
|           |      |

ILLINOIS DEPARTMENT OF TRANSPORTATION  
**HORIZONTAL CONTROL**  
 FAP ROUTE 310  
 FAP ROUTE 310 SECTION 60-14-2, 60-14-2B  
 MADISON COUNTY  
 DRAWN BY BANDY  
 CHECKED BY STEUART  
 DATE

HORIZONTAL CONTROL, FAP 310, STA. 32+850.000 TO STA. 35+650.000