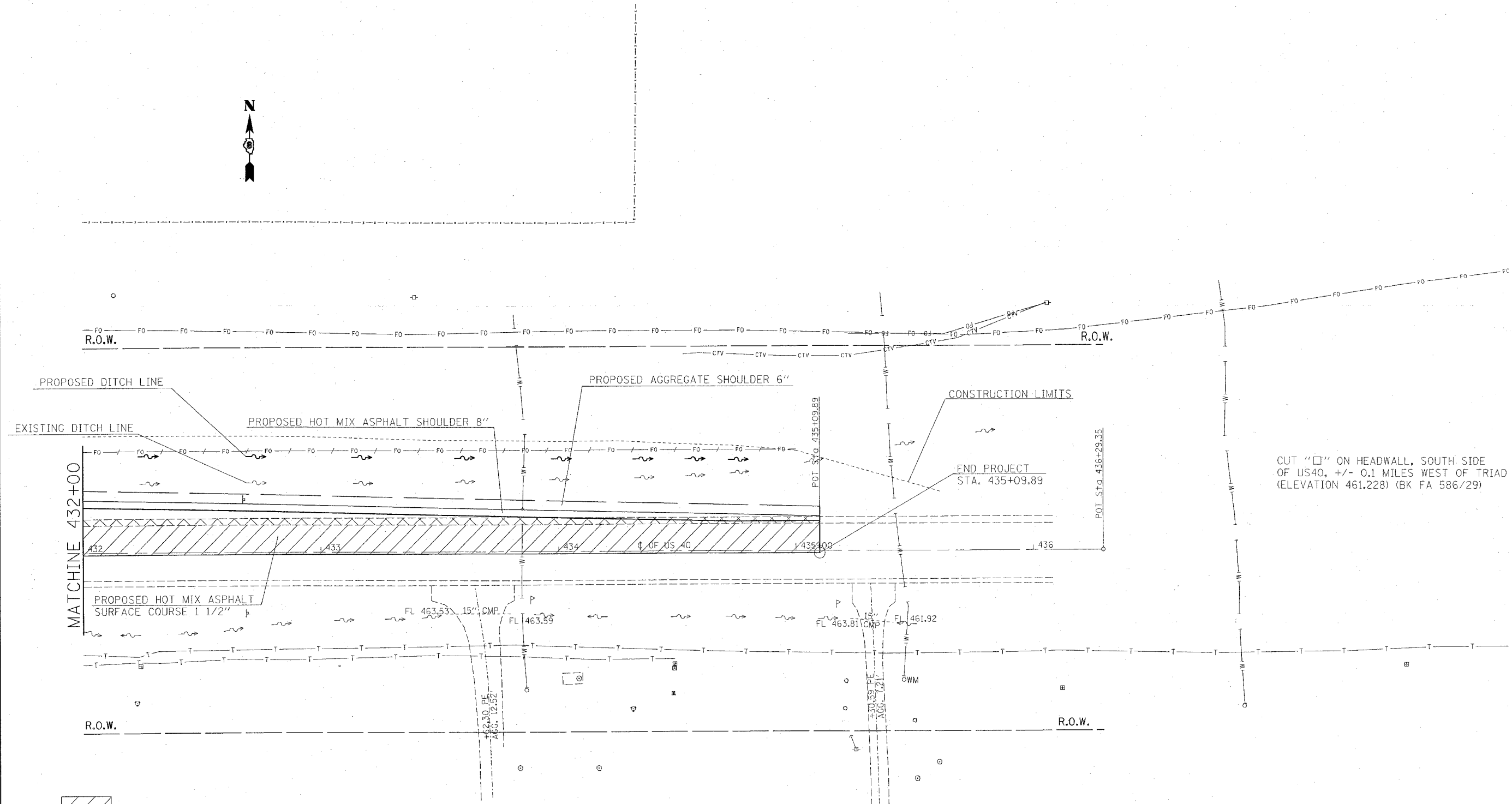


F.A.P. RTE.	SECTION	COUNTY	TOTAL SHEETS	SHEET NO.
793	T-2-1	MADISON	41	10
STA. 432+00		TO STA. _____		
FED. ROAD DIST. NO. ILLINOIS FED. AID PROJECT				



CUT "□" ON HEADWALL, SOUTH SIDE OF US40, +/- 0.1 MILES WEST OF TRIAD RD. (ELEVATION 461.228) (BK FA 586/29)

- HMA SURFACE REMOVAL 1 1/2"
- HMA SHOULDER REMOVAL

PLOT DATE * * * * *
 FILE NAME * * * * *
 PLOT SCALE * * * * *
 REFERENCE * * * * *

REVISIONS	
NAME	DATE

ILLINOIS DEPARTMENT OF TRANSPORTATION
PLAN VIEW
 FAP ROUTE 793
 SECTION T-2-1
 MADISON COUNTY

SCALE: VERT. _____
 DATE: _____ HORIZ. _____

DRAWN BY _____
 CHECKED BY _____