

F.A.P. RTE.	SECTION	COUNTY	TOTAL SHEETS	SHEET NO.
809	67-1HB-MCHD-1	MONROE	9	4
STA.		TO STA.		
FED. ROAD DIST. NO.	ILLINOIS	FED. AID PROJECT		

TRAFFIC CONTROL AND PROTECTION FOR STRUCTURAL STEEL ERECTION

NOTES

ALL SIGNS SHOWN SHALL:

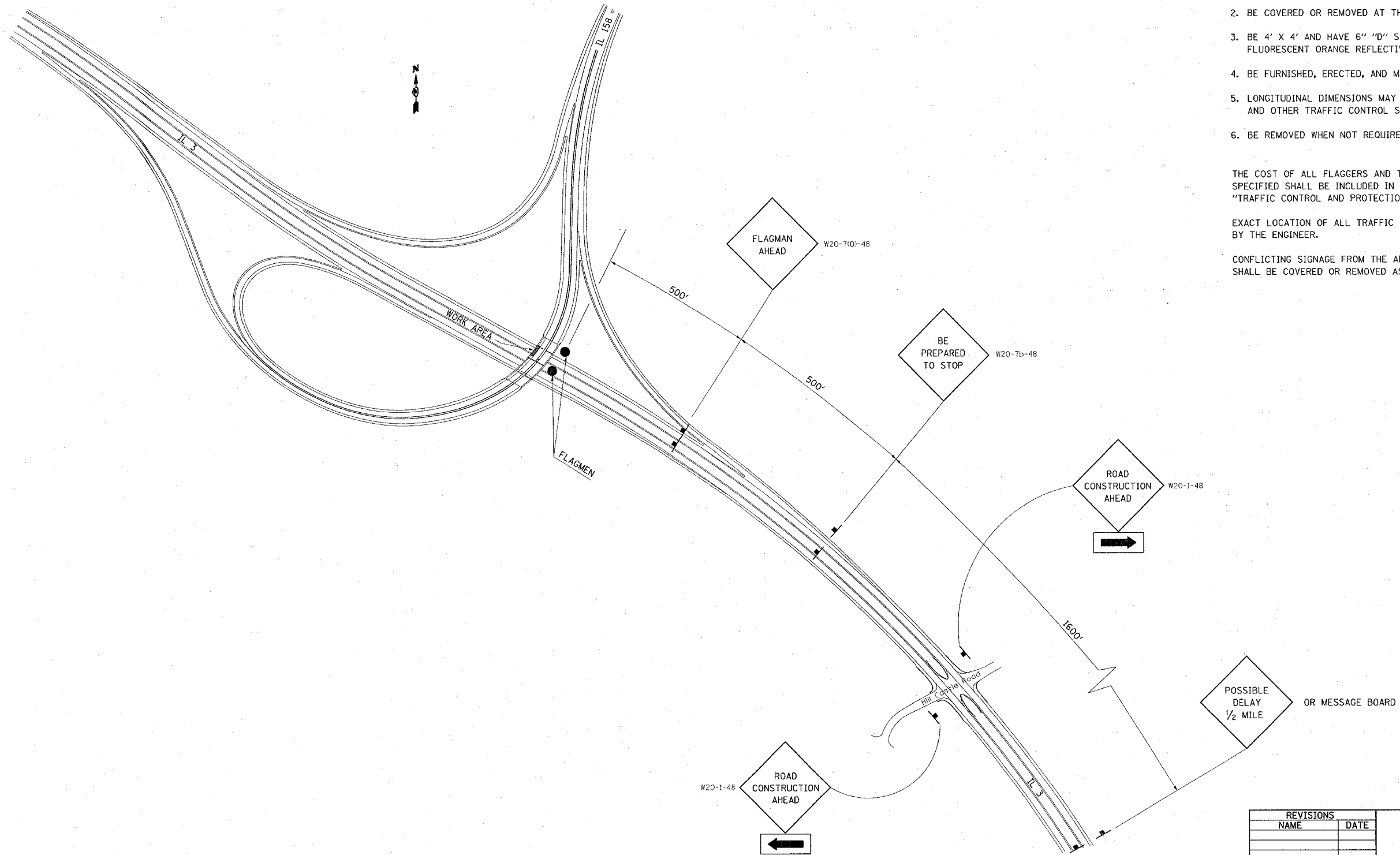
1. BE POST MOUNTED.
2. BE COVERED OR REMOVED AT THE END OF EACH WORK DAY.
3. BE 4' X 4' AND HAVE 6" "D" SIZE LETTERS AND NUMBERS ON A FLUORESCENT ORANGE REFLECTIVE BACKGROUND.
4. BE FURNISHED, ERECTED, AND MAINTAINED BY THE CONTRACTOR.
5. LONGITUDINAL DIMENSIONS MAY BE ADJUSTED TO FIT FIELD CONDITIONS AND OTHER TRAFFIC CONTROL SIGNAGE IN PLACE.
6. BE REMOVED WHEN NOT REQUIRED FOR FUTURE USE.

THE COST OF ALL FLAGGERS AND TRAFFIC CONTROL DEVICES AS HEREIN SPECIFIED SHALL BE INCLUDED IN THE CONTRACT LUMP SUM PRICE FOR "TRAFFIC CONTROL AND PROTECTION (SPECIAL)".

EXACT LOCATION OF ALL TRAFFIC CONTROL ITEMS SHALL BE APPROVED BY THE ENGINEER.

CONFLICTING SIGNAGE FROM THE APPLICATION OF STANDARD 701421 SHALL BE COVERED OR REMOVED AS DIRECTED BY THE ENGINEER.

PLAN	DATE
SUBMITTED	
PLOTTED	
ALIGNED	
CHECKED	
DATE	
BY	
NO.	
FILE NAME	



REVISIONS	
NAME	DATE

ILLINOIS DEPARTMENT OF TRANSPORTATION
TRAFFIC CONTROL PLAN
 FAP ROUTE 809 (IL 158)
 SECTION 67-1HB-MCHD-1
 MONROE COUNTY
 DRAWN BY:

DATE: 2/1/2007
 C:\projects\809\plan\plan10105987.dgn
 REF: 701421
 REF: 701422