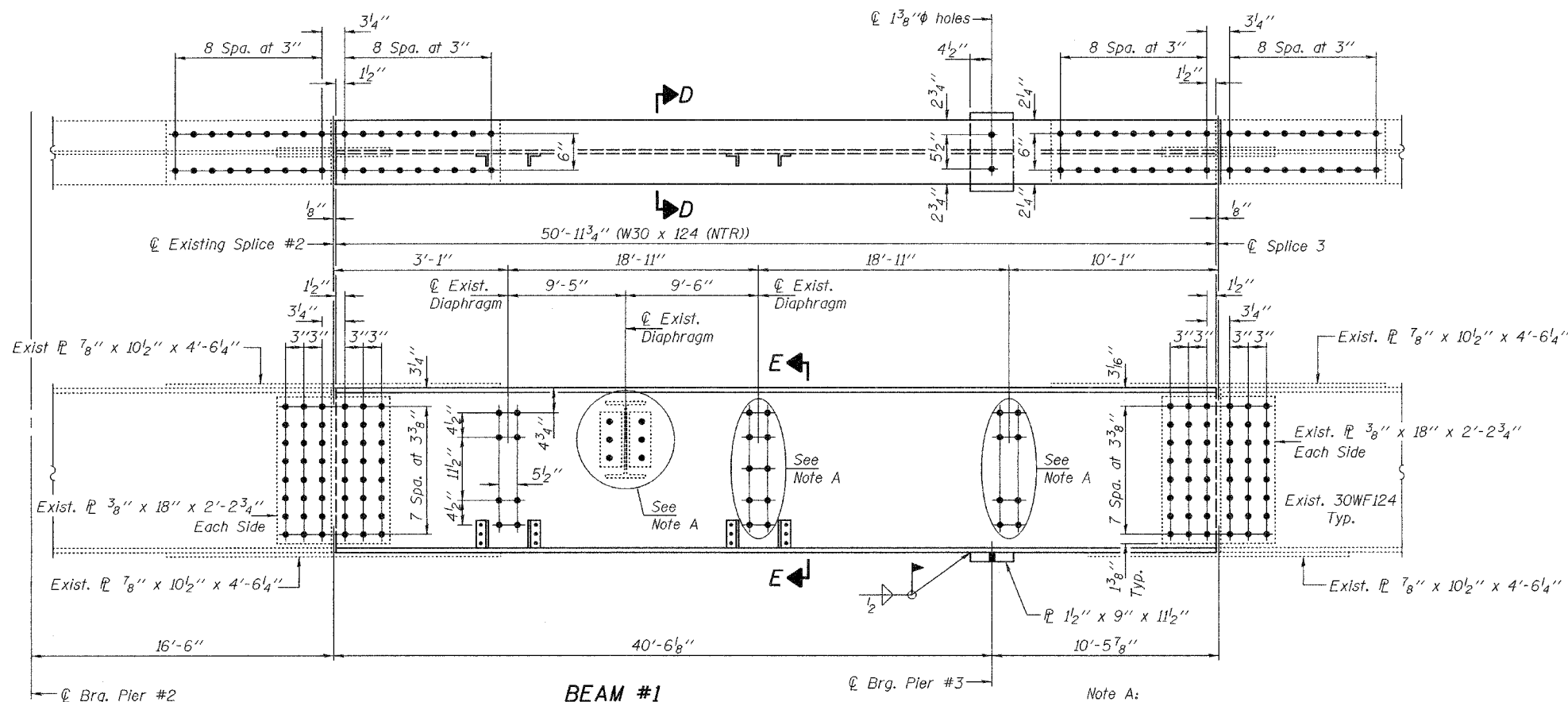
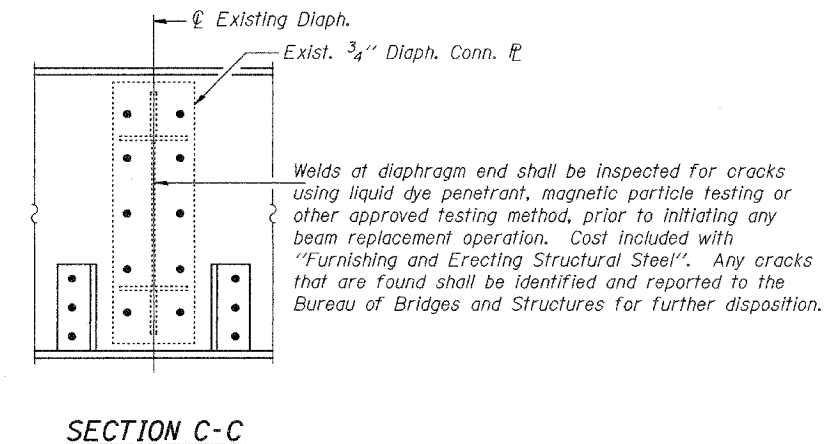
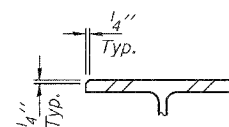
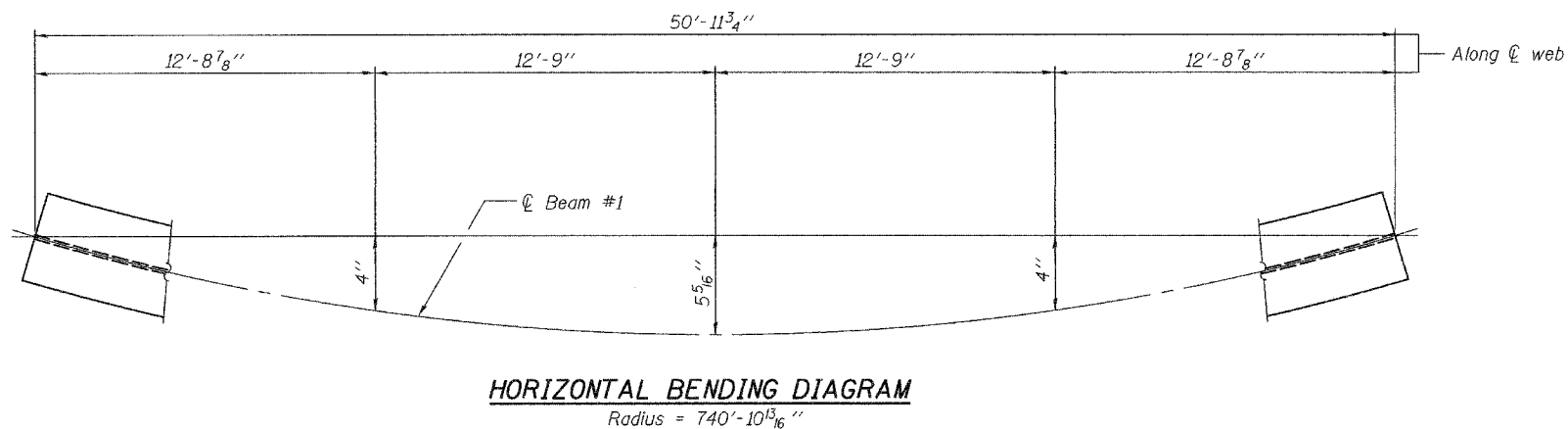


STATE OF ILLINOIS  
DEPARTMENT OF TRANSPORTATION

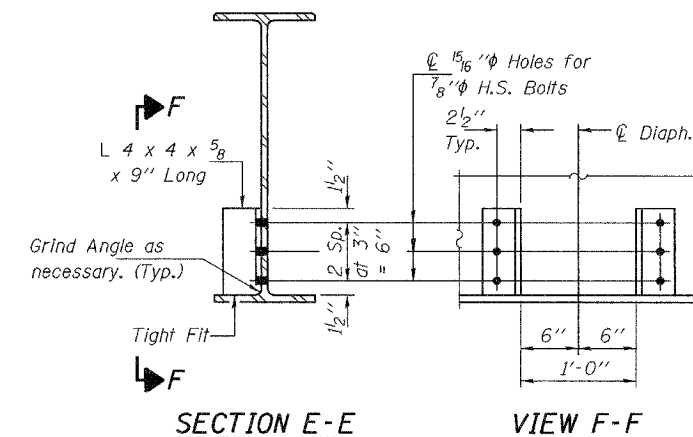
ROUTE NO.	SECTION	COUNTY	TOTAL SHEETS	SHEET NO.
F.A. 809		MONROE	9	8
FED. ROAD DIST. NO. 7	ILLINOIS	FED. AID PROJECT-		

SHEET NO. 3  
4 SHEETS



(All dimensions are along C of beam.)  
Required: One (1) W30 x 124 (NTR) x 50'-11<sup>3</sup>/<sub>4</sub>" Long.  
Four (4) L's 4 x 4 x 5/8 x 9" Long.

Note A:  
Use existing diaphragm conn. plate as a template to field drill holes in new beam.



Notes:  
Existing flange and web splice plates used on splices shall be cleaned on the contact surface and re-used on the new beam, unless otherwise directed by the Engineer in the field.  
1 5/16" Holes for new 3/4" H.S. Bolts shall be used for all diaphragm connections.  
Two hardened washers shall be required at diaphragm connections.  
The cost of all field drilling required for installation of the steel members is included with Furnishing and Erecting Structural Steel.  
Natural camber of new beam shall be placed upward for fabrication.  
Existing bolts shall not be re-used.  
Fasteners shall be high strength bolts.  
Flange splice holes shall be 1 5/16" phi for 7/8" phi bolts.  
Web splice holes shall be 1 3/16" phi for 3/4" phi bolts.

DESIGNED	AJB
CHECKED	ATH
DRAWN	baliva
CHECKED	AJB ATH

FEBRUARY 28, 2007  
EXAMINED *Carl Perry*  
PASSED *Ralph E. Anderson*  
REPAIR PLANS UNIT CHIEF  
ENGINEER OF BRIDGES AND STRUCTURES

**BRIDGE REPAIRS**  
**IL 158 OVER IL 3**  
**SBI RT. 158**  
**MONROE COUNTY**  
**SN 067-0006**