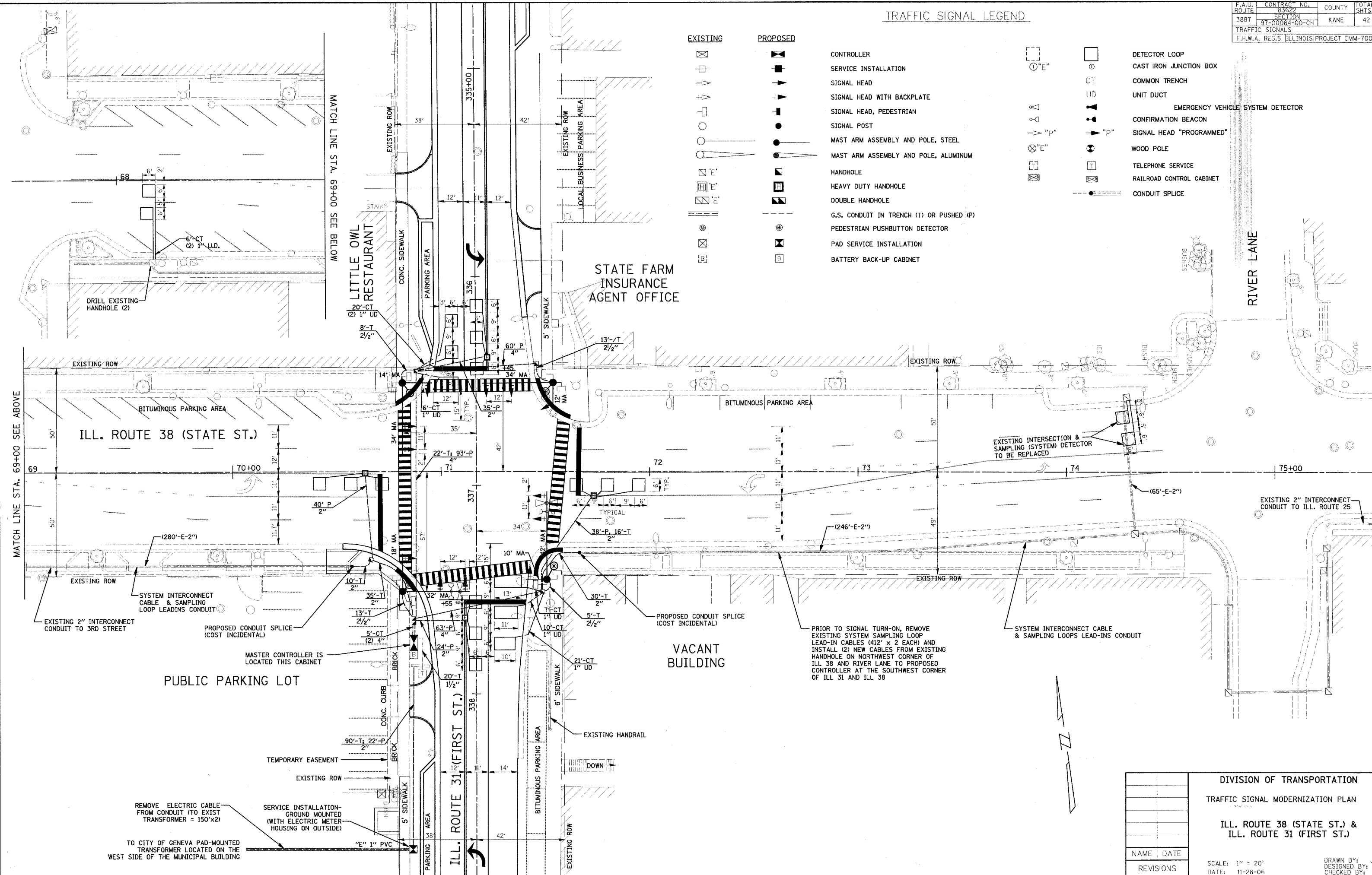


TRAFFIC SIGNAL LEGEND

EXISTING	PROPOSED		
		CONTROLLER	
		SERVICE INSTALLATION	
		SIGNAL HEAD	
		SIGNAL HEAD WITH BACKPLATE	
		SIGNAL HEAD, PEDESTRIAN	
		SIGNAL POST	
		MAST ARM ASSEMBLY AND POLE, STEEL	
		MAST ARM ASSEMBLY AND POLE, ALUMINUM	
		HANDHOLE	
		HEAVY DUTY HANDHOLE	
		DOUBLE HANDHOLE	
		G.S. CONDUIT IN TRENCH (T) OR PUSHED (P)	
		PEDESTRIAN PUSHBUTTON DETECTOR	
		PAD SERVICE INSTALLATION	
		BATTERY BACK-UP CABINET	



DIVISION OF TRANSPORTATION	
TRAFFIC SIGNAL MODERNIZATION PLAN	
ILL. ROUTE 38 (STATE ST.) & ILL. ROUTE 31 (FIRST ST.)	
NAME	DATE
REVISIONS	

SCALE: 1" = 20'
DATE: 11-28-06

DRAWN BY: J...
DESIGNED BY: J...
CHECKED BY: C...

PLOT DATE = 11/28/2006
 FILE NAME = P:\M\1073050155\chgs\TS.Plan_Sheet1.dwg
 PLOT SCALE = 43/32
 USER NAME = J...