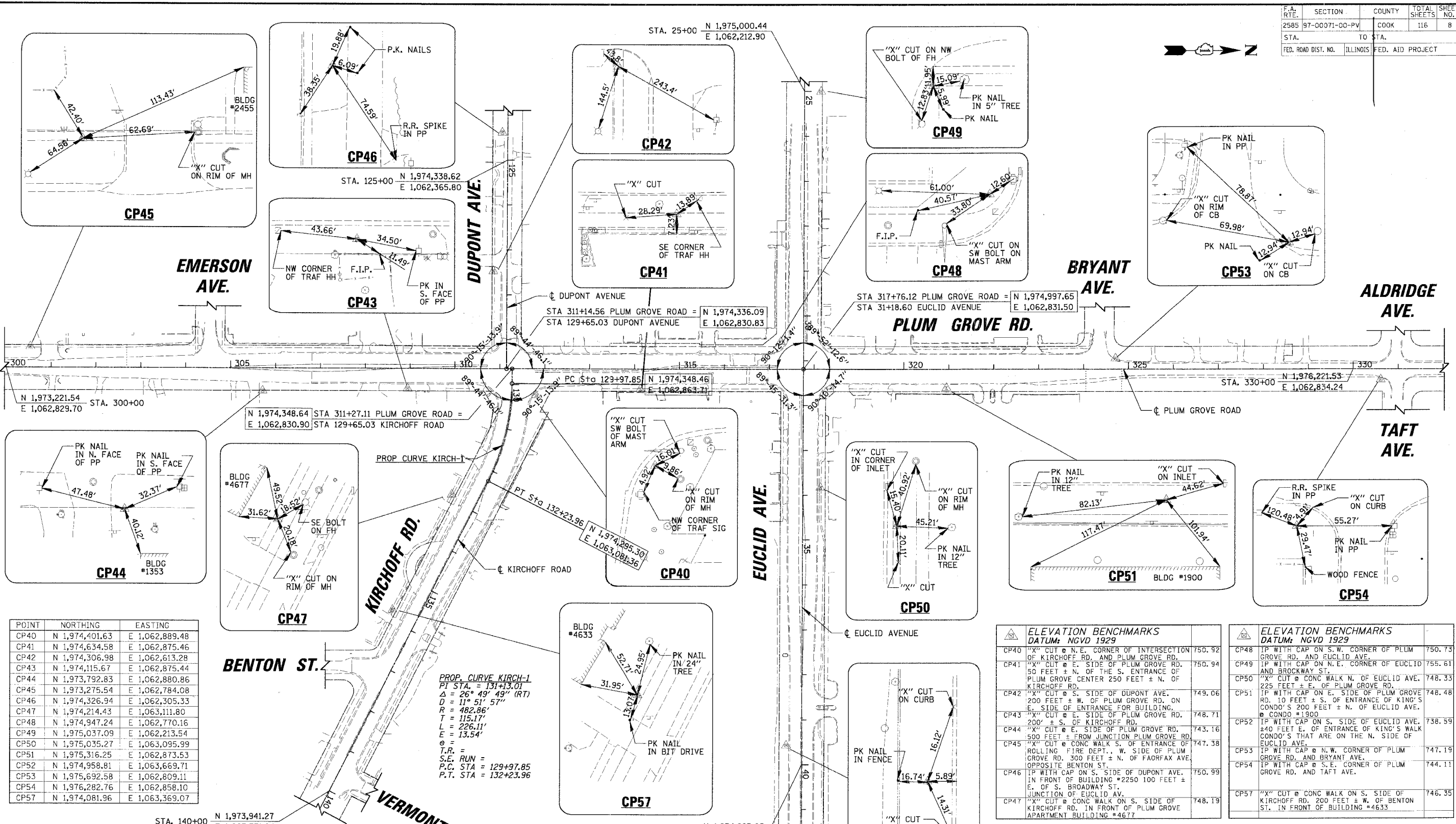


F.A. RTE.	SECTION	COUNTY	TOTAL SHEETS	SHEET NO.
2585	97-00071-00-PV	COOK	116	8
STA. TO STA.		FED. ROAD DIST. NO. ILLINOIS FED. AID PROJECT		

DATE	BY
DATE	BY
DATE	BY

CHRISTOPHER B. BURKE ENGINEERING LTD.
 9575 West Higgins Road, Suite 600
 Rosemont, Illinois 60018
 (847) 823-0500

DATE	BY
DATE	BY
DATE	BY



POINT	NORTHING	EASTING
CP40	N 1,974,401.63	E 1,062,889.48
CP41	N 1,974,634.58	E 1,062,875.46
CP42	N 1,974,306.98	E 1,062,613.28
CP43	N 1,974,115.67	E 1,062,875.44
CP44	N 1,973,792.83	E 1,062,880.86
CP45	N 1,973,275.54	E 1,062,784.08
CP46	N 1,974,326.94	E 1,062,305.33
CP47	N 1,974,214.43	E 1,063,111.80
CP48	N 1,974,947.24	E 1,062,770.16
CP49	N 1,975,037.09	E 1,062,213.54
CP50	N 1,975,035.27	E 1,063,095.99
CP51	N 1,975,316.25	E 1,062,873.53
CP52	N 1,974,958.81	E 1,063,669.71
CP53	N 1,975,692.58	E 1,062,809.11
CP54	N 1,976,282.76	E 1,062,858.10
CP57	N 1,974,081.96	E 1,063,369.07

PROP. CURVE KIRCH-1
 PT STA. = 131+13.01
 $\Delta = 26^\circ 49' 49''$ (RT)
 $D = 11^\circ 51' 57''$
 $R = 482.86'$
 $T = 115.17'$
 $L = 226.11'$
 $E = 13.54'$
 $\theta =$
 $T.R. =$
 $S.E. RUN =$
 $P.C. STA = 129+97.85$
 $P.T. STA = 132+23.96$

CP	DESCRIPTION	ELEVATION
CP40	"X" CUT @ N.E. CORNER OF INTERSECTION OF KIRCHOFF RD. AND PLUM GROVE RD.	750.92
CP41	"X" CUT @ E. SIDE OF PLUM GROVE RD. 50 FEET ± N. OF THE S. ENTRANCE OF PLUM GROVE CENTER 250 FEET ± N. OF KIRCHOFF RD.	750.94
CP42	"X" CUT @ S. SIDE OF DUPONT AVE. 200 FEET ± W. OF PLUM GROVE RD. ON E. SIDE OF ENTRANCE FOR BUILDING.	749.06
CP43	"X" CUT @ E. SIDE OF PLUM GROVE RD. 200' ± S. OF KIRCHOFF RD.	748.71
CP44	"X" CUT @ E. SIDE OF PLUM GROVE RD. 500 FEET ± FROM JUNCTION PLUM GROVE RD.	743.16
CP45	"X" CUT @ CONC WALK S. OF ENTRANCE OF ROLLING FIRE DEPT., W. SIDE OF PLUM GROVE RD. 300 FEET ± N. OF FAORFAX AVE. OPPOSITE BENTON ST.	747.38
CP46	IP WITH CAP ON S. SIDE OF DUPONT AVE. IN FRONT OF BUILDING #2250 100 FEET ± E. OF S. BROADWAY ST. JUNCTION OF EUCLID AV.	750.99
CP47	"X" CUT @ CONC WALK ON S. SIDE OF KIRCHOFF RD. IN FRONT OF PLUM GROVE APARTMENT BUILDING #4677	748.19
CP48	IP WITH CAP ON S.W. CORNER OF PLUM GROVE RD. AND EUCLID AVE.	750.73
CP49	IP WITH CAP ON N.E. CORNER OF EUCLID AND BROCKWAY ST.	755.61
CP50	"X" CUT @ CONC WALK N. OF EUCLID AVE. 225 FEET ± E. OF PLUM GROVE RD.	748.33
CP51	IP WITH CAP ON E. SIDE OF PLUM GROVE RD. 10 FEET ± S. OF ENTRANCE OF KING'S CONDO'S 200 FEET ± N. OF EUCLID AVE. @ CONDO #1900	748.48
CP52	IP WITH CAP ON S. SIDE OF EUCLID AVE. ±40 FEET E. OF ENTRANCE OF KING'S WALK CONDO'S THAT ARE ON THE N. SIDE OF EUCLID AVE.	738.59
CP53	IP WITH CAP @ N.W. CORNER OF PLUM GROVE RD. AND BRYANT AVE.	747.19
CP54	IP WITH CAP @ S.E. CORNER OF PLUM GROVE RD. AND TAFT AVE.	744.11
CP57	"X" CUT @ CONC WALK ON S. SIDE OF KIRCHOFF RD. 200 FEET ± W. OF BENTON ST. IN FRONT OF BUILDING #4633	746.35

REVISIONS	
NAME	DATE

ILLINOIS DEPARTMENT OF TRANSPORTATION
PLUM GROVE ROAD ALIGNMENT, TIES AND BENCHMARKS
 SCALE: 100'
 DATE: 6/8/2006
 DRAWN BY: PMM
 CHECKED BY: MCW