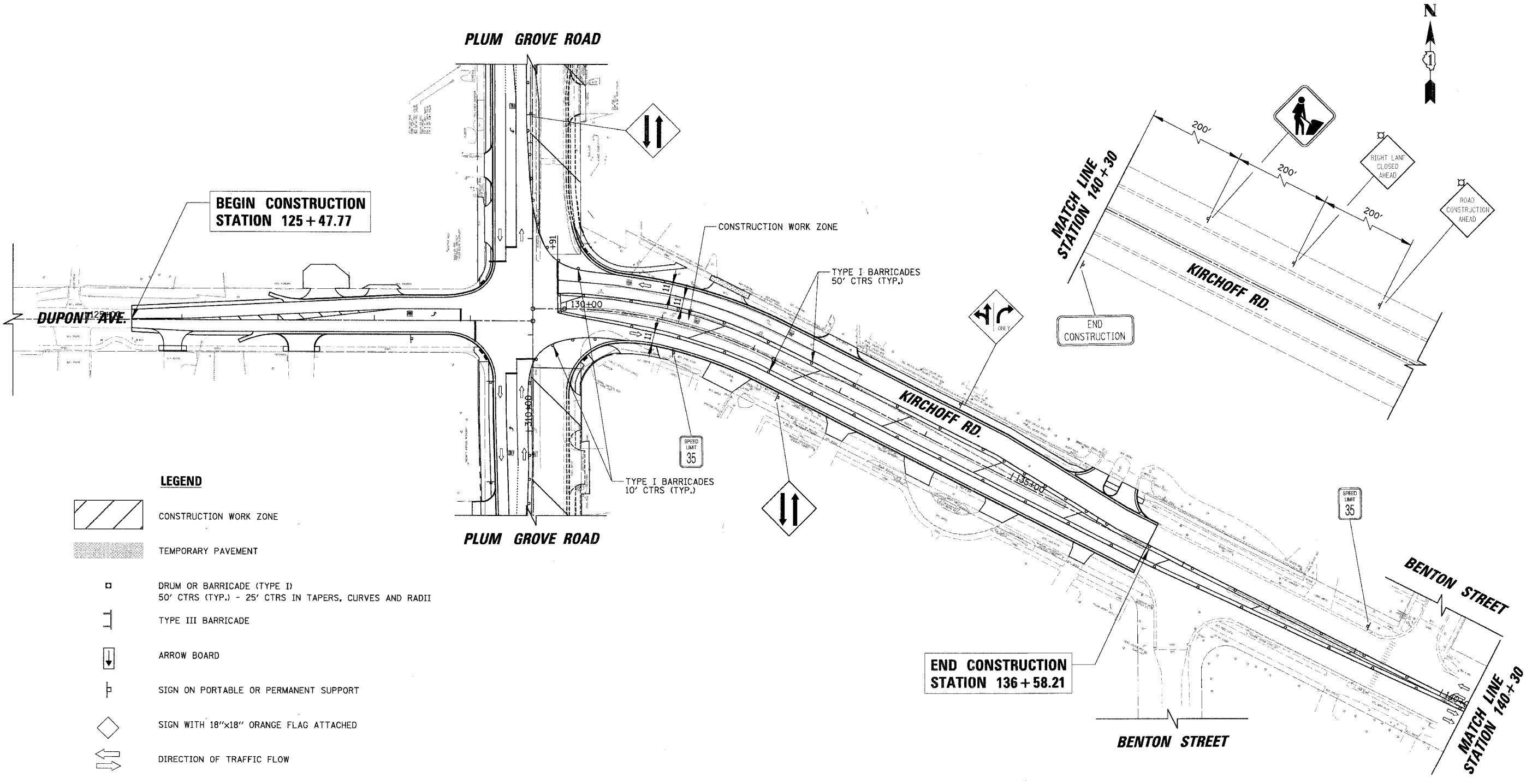


F.A. RTE.	SECTION	COUNTY	TOTAL SHEETS	SHEET NO.
2585	97-00071-00-PV	COOK	116	37
STA.		TO STA.		
FED. ROAD DIST. NO.		ILLINOIS FED. AID PROJECT		

DATE	BY
DATE	BY
DATE	BY

CHRISTOPHER B. BURKE ENGINEERING LTD.
 9575 West Higgins Road, Suite 600
 Rosemont, Illinois 60018
 (847) 823-0500

DATE	BY
DATE	BY
DATE	BY



- LEGEND**
- CONSTRUCTION WORK ZONE
 - TEMPORARY PAVEMENT
 - DRUM OR BARRICADE (TYPE I) 50' CTRS (TYP.) - 25' CTRS IN TAPERS, CURVES AND RADII
 - TYPE III BARRICADE
 - ARROW BOARD
 - SIGN ON PORTABLE OR PERMANENT SUPPORT
 - SIGN WITH 18"x18" ORANGE FLAG ATTACHED
 - DIRECTION OF TRAFFIC FLOW
 - FLASHING LIGHT
 - VERTICAL PANELS

REVISIONS	
NAME	DATE

ILLINOIS DEPARTMENT OF TRANSPORTATION
**DUPONT AVENUE AND
 KIRCHOFF ROAD
 MAINTENANCE OF TRAFFIC
 STAGE II**

SCALE: 50'
 DATE: 6/8/2006

DRAWN BY: PMM
 CHECKED BY: MCW