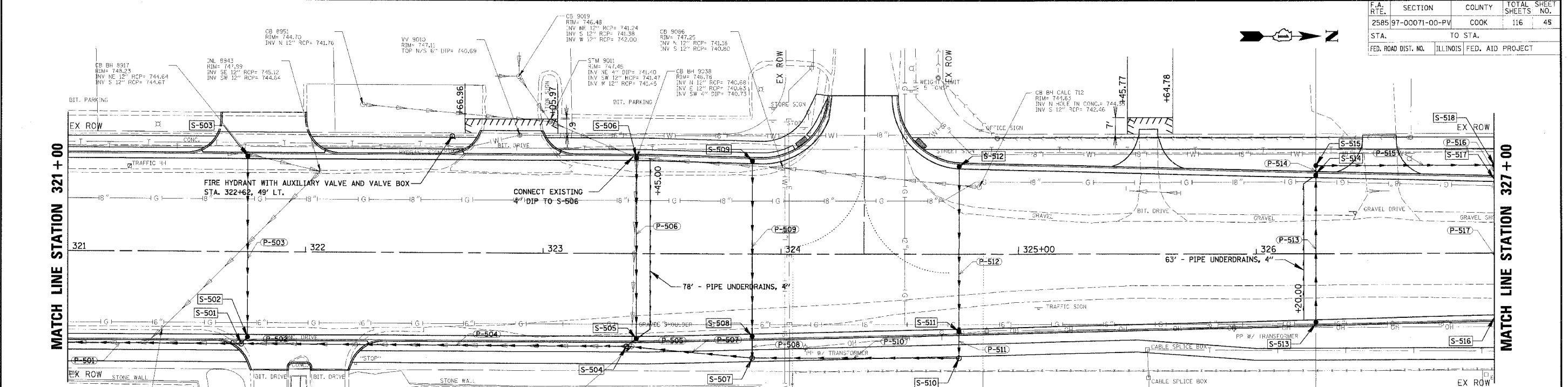
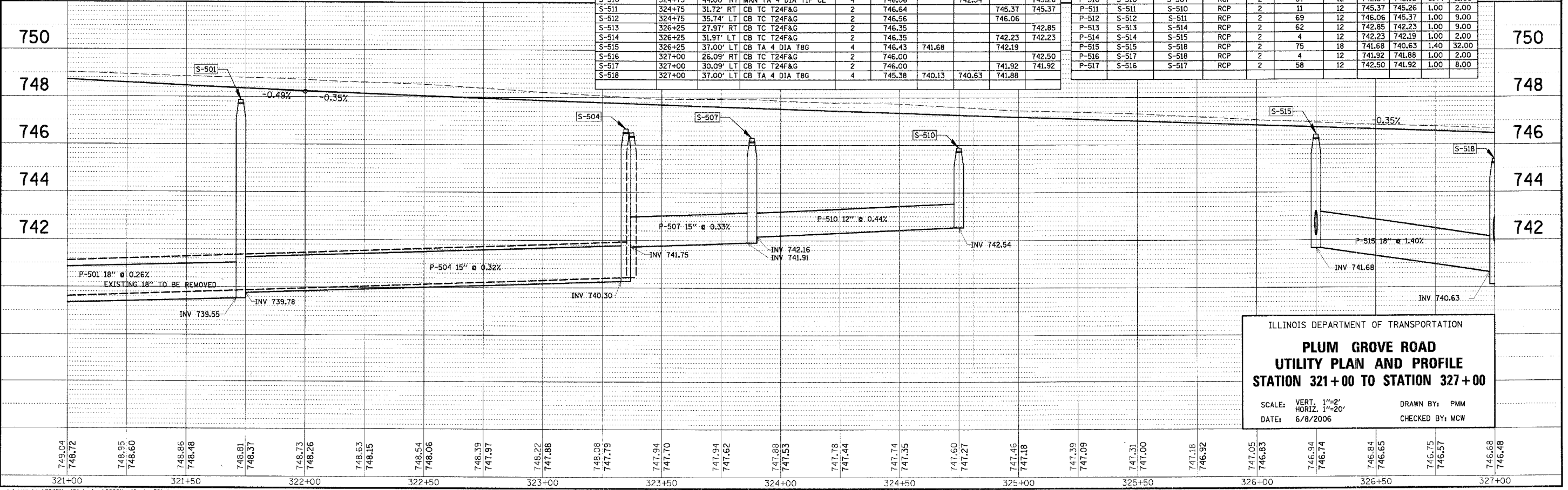


F.A. RTE.	SECTION	COUNTY	TOTAL SHEETS	SHEET NO.
2585 97-0071-00-PV	COOK	ILLINOIS	116	45
STA.	TO STA.			
FED. ROAD DIST. NO.	FED. AID PROJECT			



STRUCTURE NO.	STATION	OFFSET	STRUCTURE TYPE	DIA.(FT)	RIM ELEV.	N	S	E	W
S-501	321+73	39.00' RT	MAN TA 4 DIA TIF CL	4	747.88	739.78	739.55		743.44
S-502	321+75.6	35.00' RT	CB TC T24F&G	2	747.78			743.52	743.52
S-503	321+75.6	39.00' LT	CB TA 4 DIA T24F&G	2	747.78			744.28	
S-504	323+35	39.28' RT	MAN TA 4 DIA TIF CL	4	746.59	741.75	740.30		743.53
S-505	323+39	35.00' RT	CB TC T24F&G	2	747.04			743.58	743.58
S-506	323+39	39.00' LT	CB TC T24F&G	2	746.96			743.96	
S-507	323+88	44.00' RT	MAN TA 4 DIA TIF CL	4	746.39	742.16	741.91		742.48
S-508	323+88	33.89' RT	CB TC T24F&G	2	746.89			742.57	742.57
S-509	323+88	37.89' LT	CB TC T24F&G	2	746.81			743.31	
S-510	324+75	44.00' RT	MAN TA 4 DIA TIF CL	4	746.06		742.54		745.26
S-511	324+75	31.72' RT	CB TC T24F&G	2	746.64			745.37	745.37
S-512	324+75	35.74' LT	CB TC T24F&G	2	746.56			746.06	
S-513	326+25	27.97' RT	CB TC T24F&G	2	746.35			742.85	
S-514	326+25	31.97' LT	CB TC T24F&G	2	746.35			742.23	742.23
S-515	326+25	37.00' LT	CB TA 4 DIA T8G	4	746.43	741.68		742.19	
S-516	327+00	26.09' RT	CB TC T24F&G	2	746.00			742.50	
S-517	327+00	30.09' LT	CB TC T24F&G	2	746.00			741.92	741.92
S-518	327+00	37.00' LT	CB TA 4 DIA T8G	4	745.38	740.13	740.63		741.88

PIPE NO.	FROM STRUCTURE	TO STRUCTURE	MATERIAL	TYPE	LENGTH (FT)	DIA. (IN)	UPPER INVERT	LOWER INVERT	SLOPE	TBF
P-501	S-501	S-415	RCP	2	125	18	739.55	739.22	0.26	125.00
P-502	S-502	S-501	RCP	2	4	12	743.52	743.44	2.00	1.00
P-503	S-503	S-502	RCP	2	76	12	744.28	743.52	1.00	9.00
P-504	S-504	S-501	RCP	2	162	15	740.30	739.78	0.32	104.00
P-505	S-505	S-504	RCP	2	5	12	743.58	743.53	1.00	1.00
P-506	S-506	S-505	RCP	2	76	12	743.96	743.58	0.50	9.00
P-507	S-507	S-504	RCP	2	53	15	741.91	741.75	0.30	15.00
P-508	S-508	S-507	RCP	2	9	12	742.57	742.48	1.00	2.00
P-509	S-509	S-508	RCP	2	74	12	743.31	742.57	1.00	9.00
P-510	S-510	S-507	RCP	2	87	12	742.54	742.16	0.44	11.00
P-511	S-511	S-510	RCP	2	11	12	745.37	745.26	1.00	2.00
P-512	S-512	S-511	RCP	2	69	12	746.06	745.37	1.00	9.00
P-513	S-513	S-514	RCP	2	62	12	742.85	742.23	1.00	9.00
P-514	S-514	S-515	RCP	2	4	12	742.23	742.19	1.00	2.00
P-515	S-515	S-518	RCP	2	75	18	741.68	740.63	1.40	32.00
P-516	S-516	S-518	RCP	2	4	12	741.92	741.88	1.00	2.00
P-517	S-516	S-517	RCP	2	58	12	742.50	741.92	1.00	8.00



ILLINOIS DEPARTMENT OF TRANSPORTATION

**PLUM GROVE ROAD
UTILITY PLAN AND PROFILE
STATION 321+00 TO STATION 327+00**

SCALE: VERT. 1"=2'
HORIZ. 1"=20'

DATE: 6/8/2006

DRAWN BY: PMM
CHECKED BY: MCW

DATE: _____ BY: _____
 PLAN: _____
 CHECKED: _____
 DATE: _____

CHRISTOPHER B. BURKE ENGINEERING LTD.
 8575 West Higgins Road, Suite 600
 Rosemont, Illinois 60018
 (847) 823-0500

DATE: _____ BY: _____
 PROFILE: _____
 CHECKED: _____
 DATE: _____