

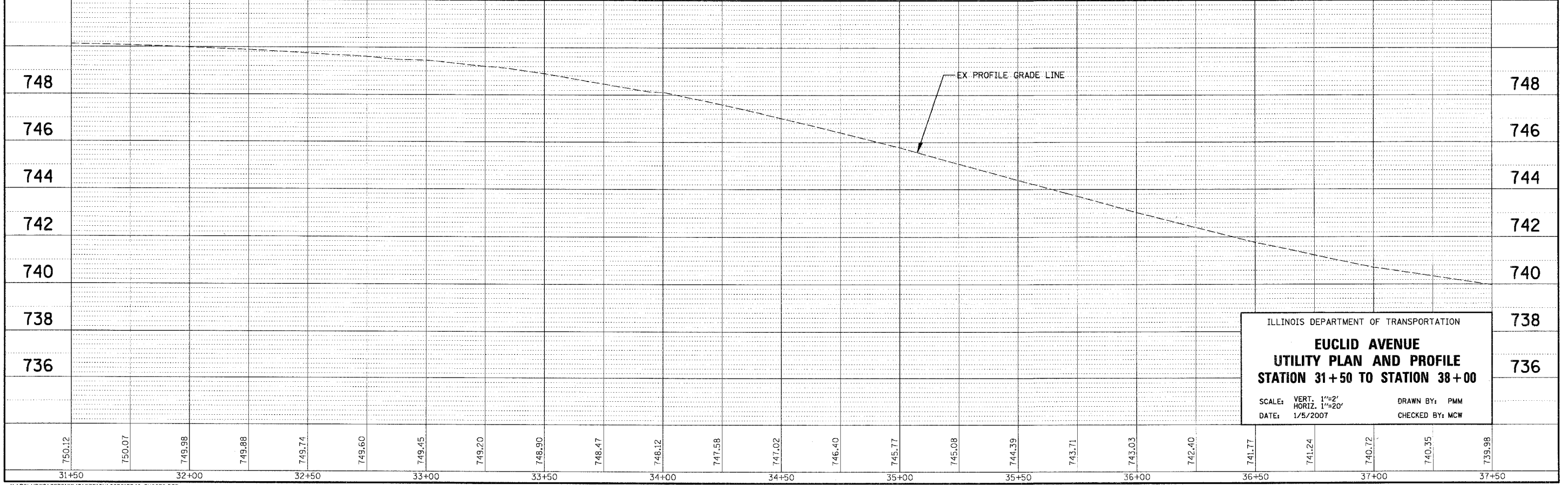
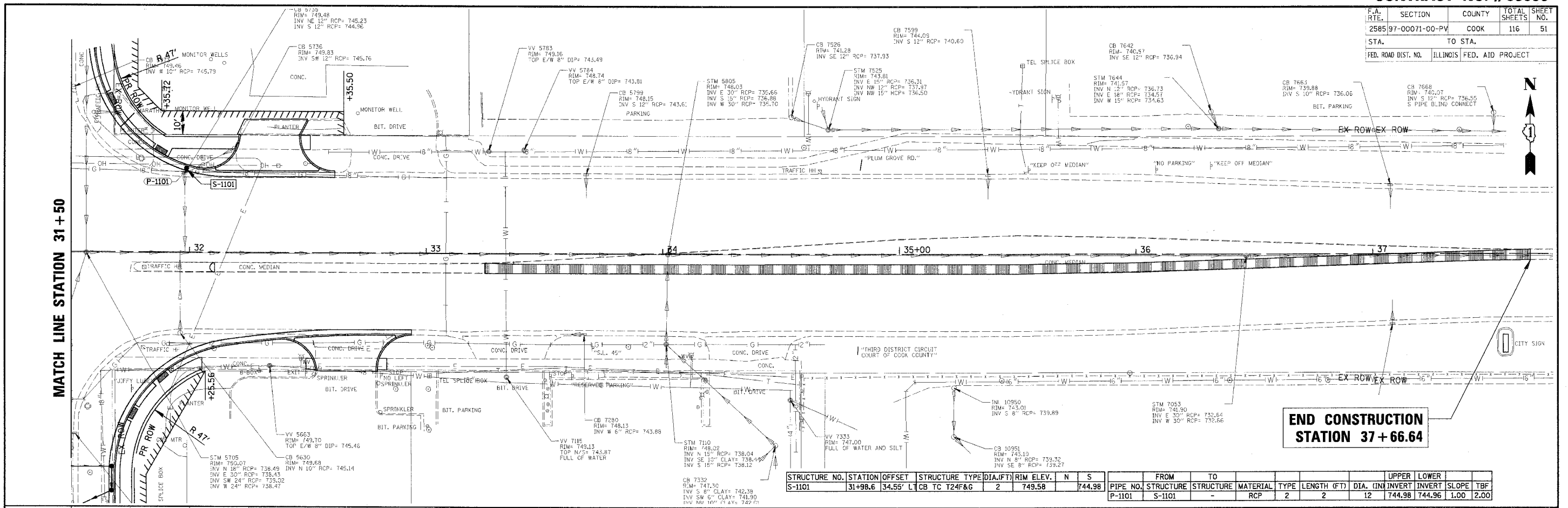
F.A. RTE.	SECTION	COUNTY	TOTAL SHEETS	SHEET NO.
2585	97-00071-00-PV	COOK	116	51
STA.	TO STA.			
FED. ROAD DIST. NO.	ILLINOIS FED. AID PROJECT			



DATE	BY

CHRISTOPHER B. BURKE ENGINEERING LTD.
 9575 West Higgins Road, Suite 600
 Rosemont, Illinois 60018
 (847) 823-0500

DATE	BY



ILLINOIS DEPARTMENT OF TRANSPORTATION
EUCLID AVENUE
UTILITY PLAN AND PROFILE
STATION 31+50 TO STATION 38+00
 SCALE: VERT. 1"=2'
 HORIZ. 1"=20'
 DATE: 1/5/2007
 DRAWN BY: PMM
 CHECKED BY: MCW