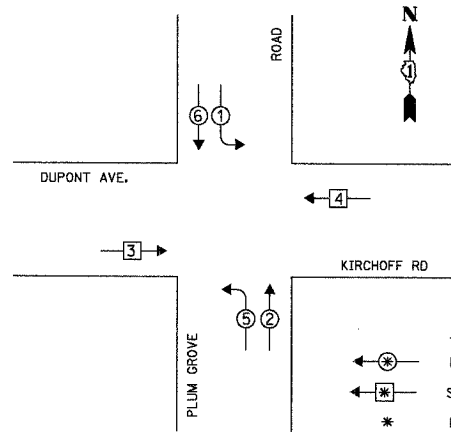


F.A. RTE.	SECTION	COUNTY	TOTAL SHEETS	SHEET NO.
2585	97-00071-00-PV	COOK	116	67
STA.		TO STA.		
FED. ROAD DIST. NO.		ILLINOIS FED. AID PROJECT		

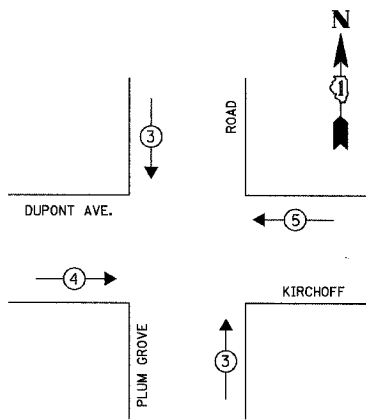
TEMPORARY CONTROLLER SEQUENCE



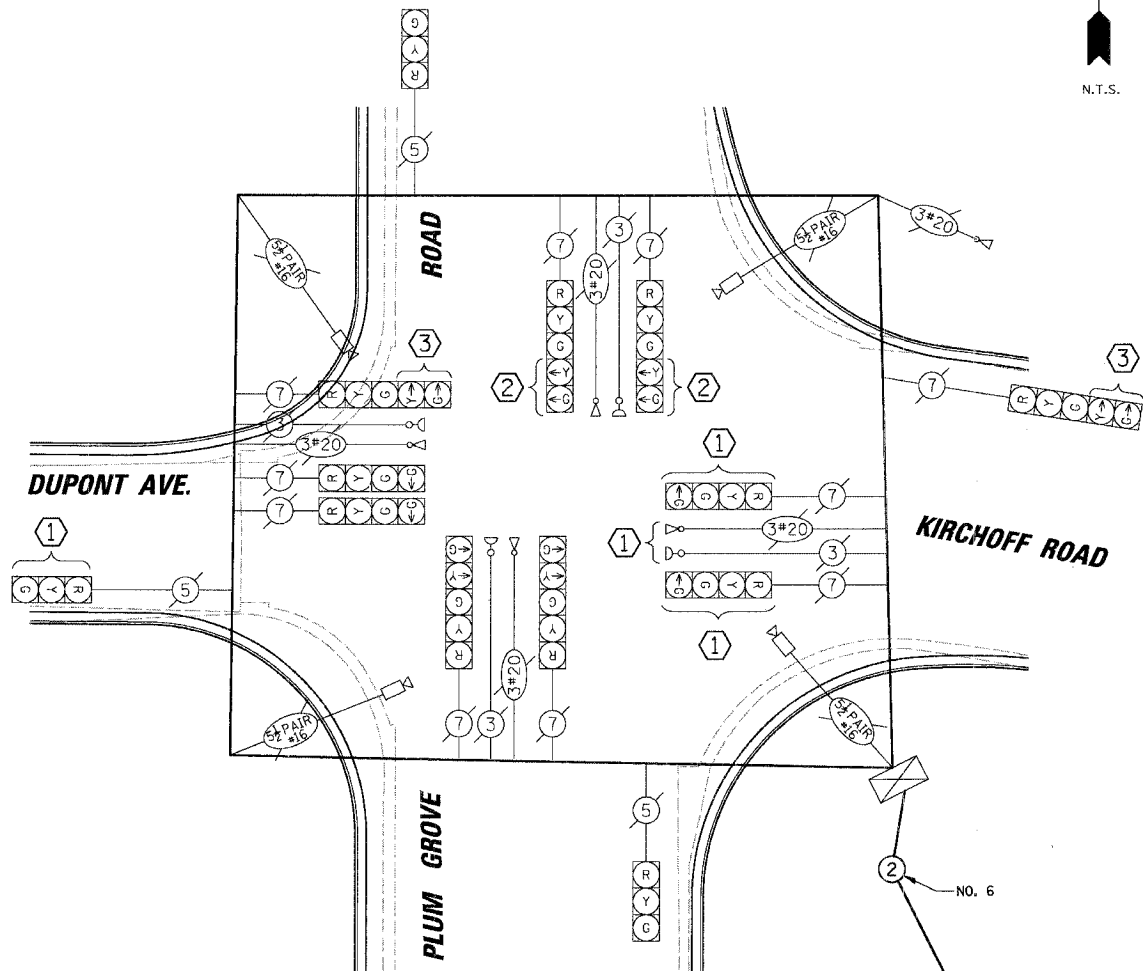
LEGEND
 ← ⊙ → DUAL ENTRY PHASE
 ← ⊙ → SINGLE ENTRY PHASE
 * NUMBER REFERS TO ASSOCIATED PHASE

STAGE II AND III TEMPORARY PHASE DESIGNATION DIAGRAM

STAGE II AND III TEMPORARY EMERGENCY VEHICLE PREEMPTION SEQUENCE



EMERGENCY VEHICLE PREEMPTOR	3	4	5
MOVEMENT	↓ ↑	→	←



TEMPORARY CABLE DIAGRAM LEGEND

- ⊠ TEMPORARY TRAFFIC SIGNAL SECTION OR PEDESTRIAN SIGNAL SECTION 12" (300mm)
- ⊞ TEMPORARY CONTROLLER CABINET
- ⊞ TEMPORARY SERVICE INSTALLATION
- ⑤ INDICATES NUMBER OF CONDUCTORS IN CABLE. ALL CONDUCTORS TO BE NUMBER 14 AWG WIRE UNLESS OTHERWISE NOTED.
- ▶ EMERGENCY VEHICLE LIGHT DETECTOR
- ▶ CONFIRMATION BEACON
- VEHICLE DETECTOR, INDUCTION LOOP
- ⊙ PEDESTRIAN PUSHBUTTON DETECTOR
- ⊞ 12" (300mm) PEDESTRIAN SIGNAL SECTION
- ⊞ MACHINE VISION PROCESSOR

CONSTRUCTION NOTES:

- ① THE CONTRACTOR SHALL UNBAG AND ENABLE THE EASTBOUND SIGNAL HEADS AND EMERGENCY VEHICLE PREEMPTOR DURING STAGE II AND III FOR KIRCHOFF RD./DUPONT AVE.
- ② THE CONTRACTOR SHALL UNBAG AND ENABLE THE YELLOW AND GREEN ARROW SECTIONS OF NORTHBOUND SIGNAL HEADS DURING STAGE II AND III FOR PLUM GROVE ROAD.
- ③ THE CONTRACTOR SHALL BAG AND DISABLE THE YELLOW AND GREEN ARROW SECTIONS OF THE WEST BOUND FAR AND NEAR RIGHT SIGNAL HEADS DURING THE STAGE II AND II FOR KIRCHOFF ROAD.

NOTES:
 1. THE TRAFFIC SIGNAL CONTROLLER EQUIPMENT FOR THIS PROJECT SHALL BE "ECONOLITE" TO MATCH THE EXISTING ADJACENT SYSTEM.
 2. ALL VIDEO DETECTION ZONES ARE TO BE REDEFINED DURING EACH STAGE OF CONSTRUCTION AND ARE INCIDENTAL OF THE TEMPORARY TRAFFIC INSTALLATION.

DATE: _____ BY: _____
 CHECKED: _____
 DESIGNED: _____
 DRAWN: _____
 NO. _____

CHRISTOPHER B. BURKE ENGINEERING LTD.
 9575 West Higgins Road, Suite 600
 Rosemont, Illinois 60018
 (847) 823-0500

DATE: _____ BY: _____
 CHECKED: _____
 DESIGNED: _____
 DRAWN: _____
 NO. _____

TYPE	NO. OF LAMPS	WATTAGE XINCAND. LED	% OPERATION	TOTAL WATTAGE
SIGNAL (RED)	13	135	0.50	877.50
(YELLOW)	13	135	0.25	438.75
(GREEN)	13	135	0.25	438.75
ARROW	14	135	0.10	189.00
PED. SIGNAL	-	90	1.00	-
CONTROLLER	1	100	1.00	100.00
ILLUM. SIGN	-	252	0.05	-
FLASHER	-	-	0.50	-

ENERGY COSTS TO: TOTAL = 2044.00
 ILLINOIS DEPARTMENT OF TRANSPORTATION
 DIVISION OF HIGHWAY/DISTRICT 1
 201 WEST CENTER COURT/SCHAUMBURG, ILLINOIS 60196-1096
 ENERGY SUPPLY: CONTACT: JOAN COOK
 PHONE: (847) 816-5461
 COMPANY: COMMONWEALTH EDISON

FOUNDATION (DEPTH)	FT.	(m)	CABLE SLACK	FT.	(m)	VERTICAL	FT.	(m)
TYPE A - POST	4	(1.2)	HANDHOLE	6.5	(2.0)	ALL FOUNDATIONS	3.5	(1.0)
D - CONTROLLER	4	(1.2)	DOUBLE HANDHOLE	13	(4.0)	MAST ARM (L) POLE	20' ± L-2'	
C - M. ARM POLE	-	-	SIGNAL POST	2	(1.0)	(6m ± L-0.6m) =	-	-
24" (600mm)	10	(3.0)	CONTROLLER CAB.	1	(0.5)	BRACKET MOUNTED	13	(4.0)
30" (750mm)	15	(4.6)	FIBER OPTIC	13	(4.0)	PED. PUSHBUTTON	4	(1.2)
			ELECTRIC SERVICE	1	(0.5)	ELECTRIC SERVICE	13.5	(4.1)
			GROUND CABLE	1	(0.5)	SERVICE TO GROUND	13.5	(4.1)
						POST MOUNTED	6	(1.8)

REVISIONS	NAME	DATE

ILLINOIS DEPARTMENT OF TRANSPORTATION
TEMPORARY CABLE PLAN, TEMPORARY PHASE DESIGNATION DIAGRAM AND TEMPORARY EMERGENCY VEHICLE PREEMPTION SEQUENCE STAGE II AND III
 PLUM GROVE ROAD AND KIRCHOFF RD. / DUPONT AVE.
 ROLLING MEADOWS, ILLINOIS
 SCALE: NOT TO SCALE
 DATE: 6/8/2006
 DRAWN BY: FBP
 DESIGNED BY: ABR
 CHECKED BY: GMZ