

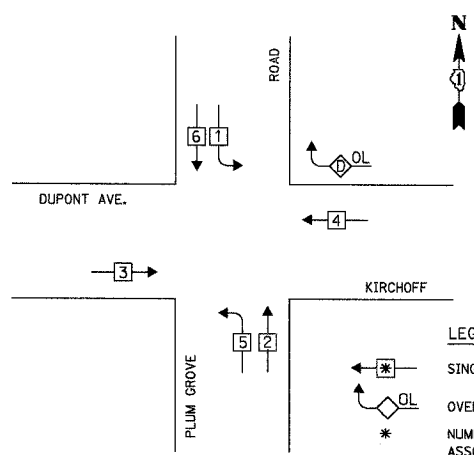
F.A. RT#	SECTION	COUNTY	TOTAL SHEETS	SHEET NO.
2585	97-00071-00-PV	COOK	116	69
STA.	TO STA.			
FED. ROAD DIST. NO.	ILLINOIS	FED. AID PROJECT		

DATE	BY	NO.

CHRISTOPHER B. BURKE ENGINEERING LTD.
 9575 West Higgins Road, Suite 600
 Rosemont, Illinois 60018
 (847) 823-0500

DATE	BY	NO.

INTERIM TEMPORARY CONTROLLER SEQUENCE

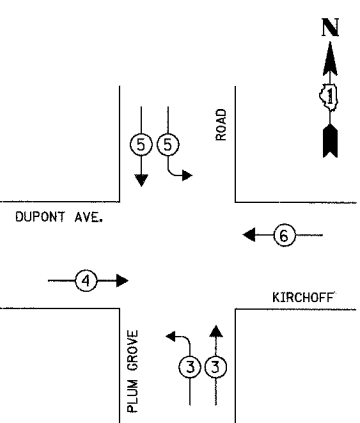


LEGEND
 * SINGLE ENTRY PHASE
 OL OVERLAP
 * NUMBER REFERS TO ASSOCIATED PHASE

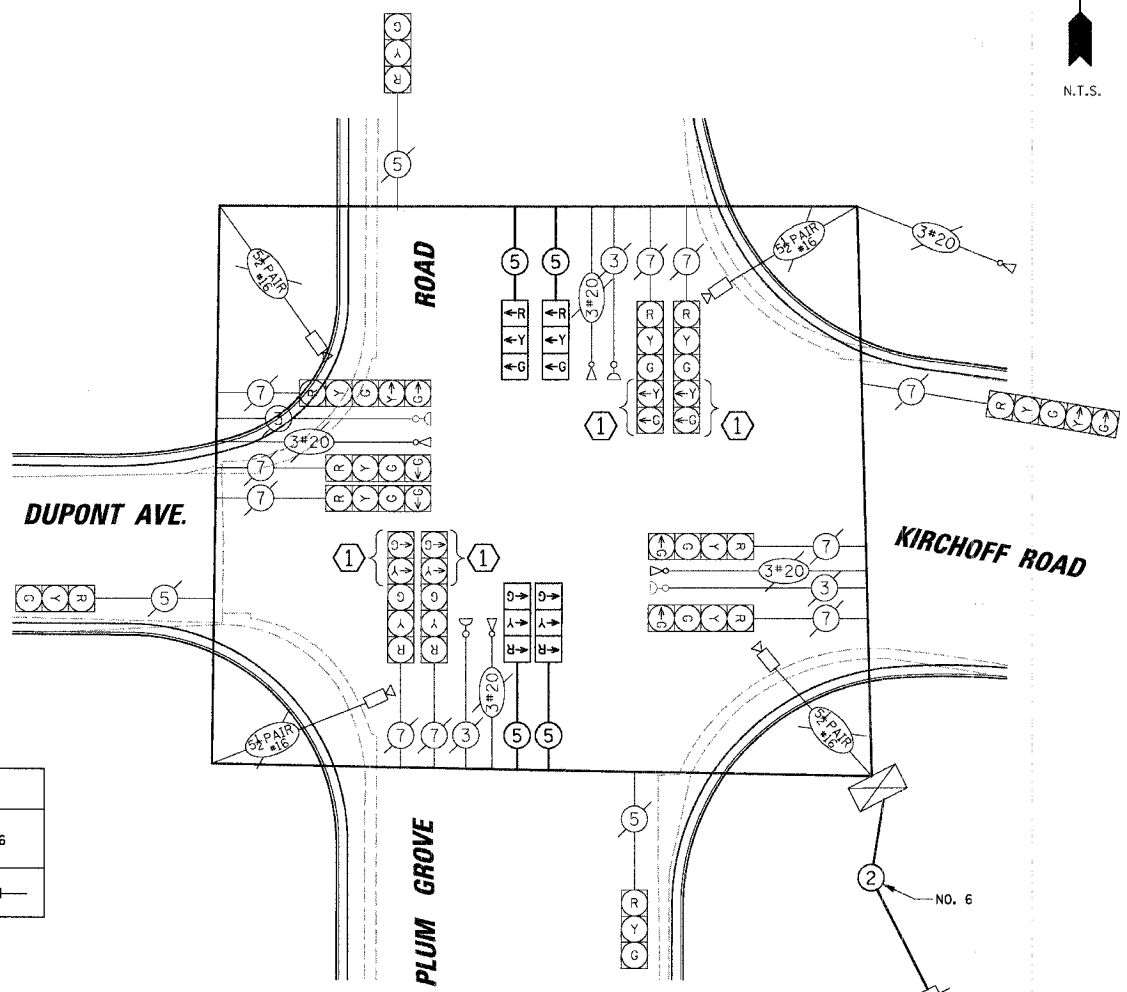
INTERIM TEMPORARY PHASE DESIGNATION DIAGRAM

OVERLAP LETTER	PERMISSIVE PHASE	PROTECTED PHASE
D	= 4	+ 1

INTERIM EMERGENCY VEHICLE PREEMPTION SEQUENCE



EMERGENCY VEHICLE PREEMPTOR	3	4	5	6
MOVEMENT	↖ ↗	→	↘ ↙	←



TEMPORARY CABLE DIAGRAM LEGEND

- R TEMPORARY TRAFFIC SIGNAL SECTION OR PEDESTRIAN SIGNAL SECTION 12" (300mm)
- X TEMPORARY CONTROLLER CABINET
- TEMPORARY SERVICE INSTALLATION
- 5 INDICATES NUMBER OF CONDUCTORS IN CABLE. ALL CONDUCTORS TO BE NUMBER 14 AWG WIRE UNLESS OTHERWISE NOTED.
- ▶ EMERGENCY VEHICLE LIGHT DETECTOR
- CONFIRMATION BEACON
- ◻ VEHICLE DETECTOR, INDUCTION LOOP
- PEDESTRIAN PUSHBUTTON DETECTOR
- ⊞ 12" (300mm) PEDESTRIAN SIGNAL SECTION
- ⊞ MACHINE VISION PROCESSOR

CONSTRUCTION NOTES:

- ① THE CONTRACTOR SHALL BAG AND DISABLE THE YELLOW AND GREEN ARROW SECTIONS OF NORTHBOUND AND SOUTHBOUND SIGNAL HEADS OF PLUM GROVE ROAD FOR THE INTERIM UPON COMPLETION OF CONSTRUCTION.
- ② THIS INTERIM STAGE SHALL BE IMPLEMENTED AFTER THE ROADWAY IMPROVEMENTS ARE COMPLETED AND ALL TRAFFIC LANES ARE OPEN.

ESTIMATED BILL OF MATERIALS
 TEMPORARY TRAFFIC SIGNAL INSTALLATION
 PLUM GROVE ROAD AT KIRCHOFF ROAD - DUPONT AVENUE
 INTERIM

ITEM	UNIT	QUANTITY
SIGNAL HEAD, 1-FACE, 3-SECTION, SPAN WIRE MOUNTED	EACH	4
ELECTRIC CABLE AERIAL SUSPENDED, SIGNAL, NO. 14 5C	FOOT	1100

- NOTES:**
1. THE TRAFFIC SIGNAL CONTROLLER EQUIPMENT FOR THIS PROJECT SHALL BE "ECONOLITE" TO MATCH THE EXISTING ADJACENT SYSTEM.
 2. ALL VIDEO DETECTION ZONES ARE TO BE REDEFINED DURING EACH STAGE OF CONSTRUCTION AND ARE INCIDENTAL OF THE TEMPORARY TRAFFIC INSTALLATION.

TYPE	NO. OF LAMPS	WATTAGE X INCAND.	WATTAGE X LED	% OPERATION	TOTAL WATTAGE
SIGNAL (RED)	17	135		0.50	1147.50
(YELLOW)	17	135		0.25	573.75
(GREEN)	17	135		0.25	573.75
ARROW	8	135		0.10	108.00
PED. SIGNAL	-	90		1.00	-
CONTROLLER	1	100		1.00	100.00
ILLUM. SIGN	-	252		0.05	-
FLASHER	-			0.50	-

ENERGY COSTS TO: TOTAL = 2503.00
 ILLINOIS DEPARTMENT OF TRANSPORTATION
 DIVISION OF HIGHWAY/DISTRICT 1
 201 WEST CENTER COURT/SCHAUMBURG, ILLINOIS 60196-1096
 ENERGY SUPPLY: CONTACT: JOAN COOK
 PHONE: (847) 816-5461
 COMPANY: COMMONWEALTH EDISON

FOUNDATION (DEPTH)	FT.	(m)	CABLE SLACK	FT.	(m)	VERTICAL	FT.	(m)
TYPE A - POST	4	(1.2)	HANDHOLE	6.5	(2.0)	ALL FOUNDATIONS	3.5	(1.0)
D - CONTROLLER	4	(1.2)	DOUBLE HANDHOLE	13	(4.0)	MAST ARM (L) POLE	20'+L-2'	
C - M. ARM POLE	2	(0.6)	SIGNAL POST	2	(0.6)	(6m+L-0.6m)		
24" (600mm)	10	(3.0)	CONTROLLER CAB.	1	(0.3)	BRACKET MOUNTED	13	(4.0)
30" (750mm)	15	(4.6)	FIBER OPTIC	13	(4.0)	PED. PUSHBUTTON	4	(1.2)
			ELECTRIC SERVICE	1	(0.3)	ELECTRIC SERVICE	13.5	(4.1)
			GROUND CABLE	1	(0.3)	SERVICE TO GROUND	13.5	(4.1)
						POST MOUNTED	6	(1.8)

NOTE: INTERIM STAGE; UPON COMPLETION OF CONSTRUCTION

REVISIONS		ILLINOIS DEPARTMENT OF TRANSPORTATION	
NAME	DATE		
		TEMPORARY CABLE PLAN, TEMPORARY PHASE DESIGNATION DIAGRAM AND TEMPORARY EMERGENCY VEHICLE PREEMPTION SEQUENCE	
		PLUM GROVE ROAD AND KIRCHOFF RD. / DUPONT AVE. ROLLING MEADOWS, ILLINOIS	
		SCALE: NOT TO SCALE	DRAWN BY: FFB
			DESIGNED BY: ABR
		DATE: 6/8/2006	CHECKED BY: GMZ