

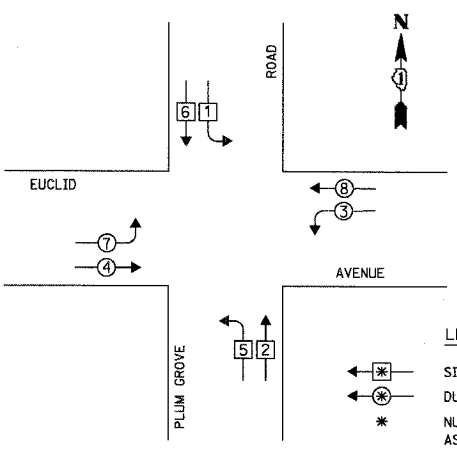
F.A. RTE.	SECTION	COUNTY	TOTAL SHEETS	SHEET NO.
2585	97-00071-00-PV	COOK	116	75
STA.	TO STA.			
FED. ROAD DIST. NO.	ILLINOIS	FED. AID PROJECT		



**TEMPORARY CABLE DIAGRAM LEGEND**

- R TEMPORARY TRAFFIC SIGNAL SECTION OR PEDESTRIAN SIGNAL SECTION 12" (300mm)
- X TEMPORARY CONTROLLER CABINET
- + TEMPORARY SERVICE INSTALLATION
- 5 INDICATES NUMBER OF CONDUCTORS IN CABLE, ALL CONDUCTORS TO BE NUMBER 14 AWG WIRE UNLESS OTHERWISE NOTED.
- ▶ EMERGENCY VEHICLE LIGHT DETECTOR
- ▶▶ CONFIRMATION BEACON
- VEHICLE DETECTOR, INDUCTION LOOP
- ⊙ PEDESTRIAN PUSHBUTTON DETECTOR
- ⊙ 12" (300mm) PEDESTRIAN SIGNAL SECTION
- ◻ MACHINE VISION PROCESSOR

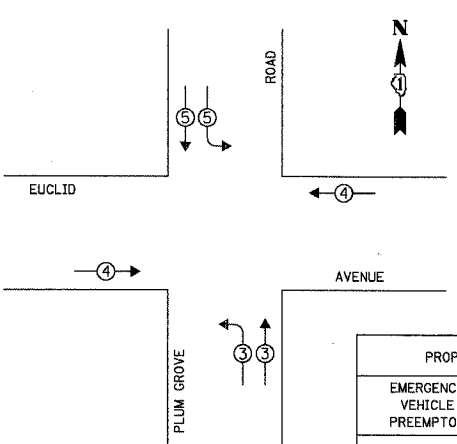
**INTERIM TEMPORARY CONTROLLER SEQUENCE**



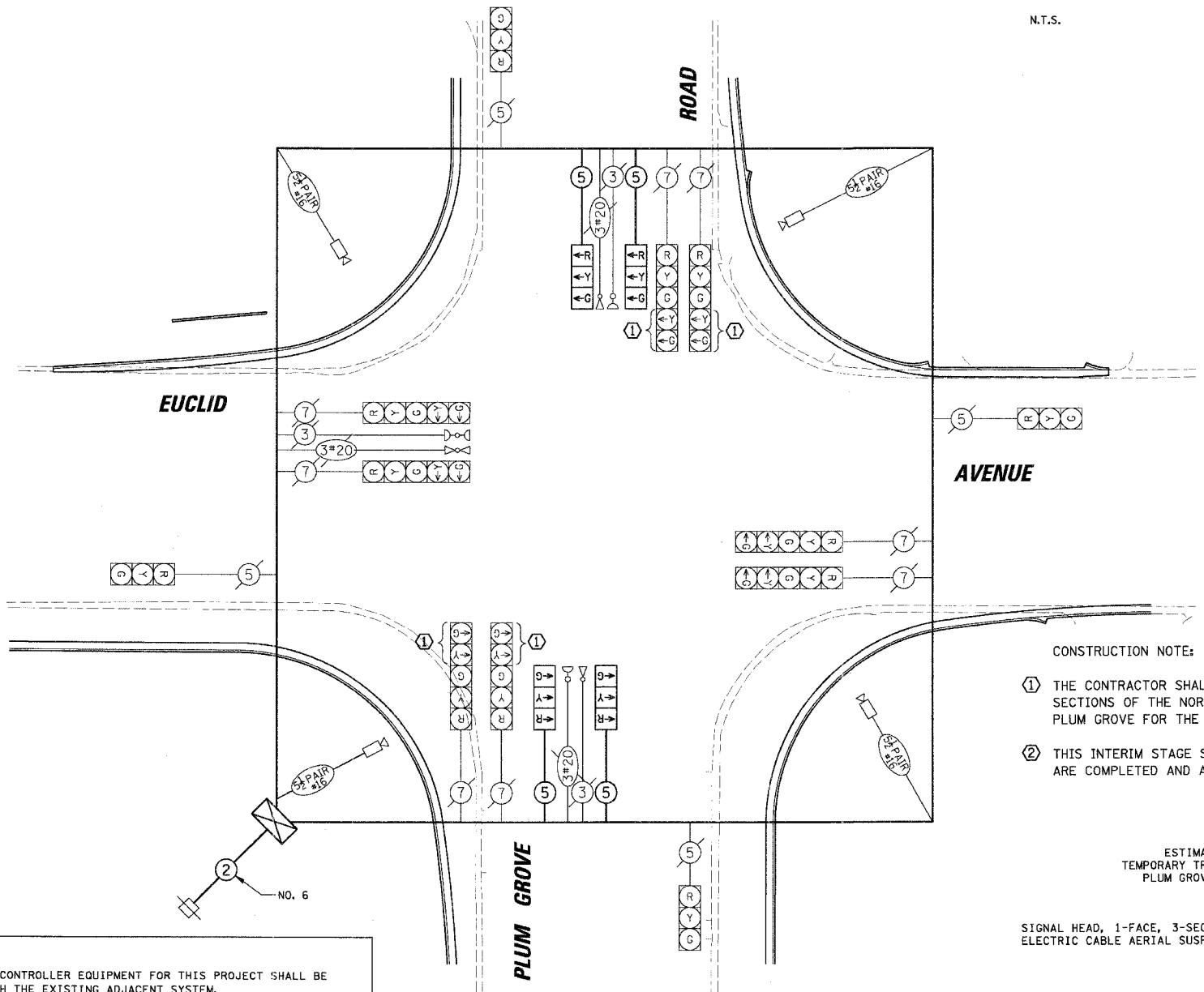
- LEGEND**
- ← SINGLE ENTRY PHASE
  - ←→ DUAL ENTRY PHASE
  - \* NUMBER REFERS TO ASSOCIATED PHASE

**INTERIM TEMPORARY PHASE DESIGNATION DIAGRAM**

**INTERIM EMERGENCY VEHICLE PREEMPTION SEQUENCE**



PROPOSED EMERGENCY VEHICLE PREEMPTORS			
EMERGENCY VEHICLE PREEMPTOR	3	4	5
MOVEMENT	↶ ↷	↶ ↷	↶ ↷



**CONSTRUCTION NOTE:**

- ① THE CONTRACTOR SHALL BAG AND DISABLE THE YELLOW AND GREEN ARROW SECTIONS OF THE NORTHBOUND AND SOUTHBOUND FAR SIDE SIGNAL HEADS OF PLUM GROVE FOR THE INTERIM STAGE I.
- ② THIS INTERIM STAGE SHALL BE IMPLEMENTED AFTER THE ROADWAY IMPROVEMENTS ARE COMPLETED AND ALL TRAFFIC LANES ARE OPEN.

**ESTIMATED BILL OF MATERIALS  
TEMPORARY TRAFFIC SIGNAL INSTALLATION  
PLUM GROVE ROAD AT EUCLID AVENUE  
INTERIM**

ITEM	UNIT	QUANTITY
SIGNAL HEAD, 1-FACE, 3-SECTION, SPAN WIRE MOUNTED	EACH	4
ELECTRIC CABLE AERIAL SUSPENDED, SIGNAL, NO. 14 5C	FOOT	1090

I.D.O.T. TRAFFIC SIGNAL INSTALLATION ELECTRICAL SERVICE REQUIREMENTS					TOTAL WATTAGE
TYPE	NO. OF LAMPS	WATTAGE X INCAND.	LED	% OPERATION	
SIGNAL (RED)	16	135		0.50	1080.00
(YELLOW)	16	135		0.25	540.00
(GREEN)	16	135		0.25	540.00
ARROW	8	135		0.10	108.00
PED. SIGNAL	---	90		1.00	---
CONTROLLER	1	100		1.00	100.00
ILLUM. SIGN	---	252		0.05	---
FLASHER	---			0.50	---
ENERGY COSTS TO:					TOTAL = 2368.00

- NOTES:**
1. THE TRAFFIC SIGNAL CONTROLLER EQUIPMENT FOR THIS PROJECT SHALL BE "ECONOLITE" TO MATCH THE EXISTING ADJACENT SYSTEM.
  2. ALL VIDEO DETECTION ZONES ARE TO BE REDEFINED DURING EACH STAGE OF CONSTRUCTION AND ARE INCIDENTAL OF THE TEMPORARY TRAFFIC INSTALLATION.

FOUNDATION (DEPTH)	FT.	(m)	CABLE SLACK	FT.	(m)	VERTICAL	FT.	(m)
TYPE A - POST	4	(1.2)	HANDHOLE	6.5	(2.0)	ALL FOUNDATIONS	3.5	(1.0)
D - CONTROLLER	4	(1.2)	DOUBLE HANDHOLE	13	(4.0)	MAST ARM (L) POLE	20'+L-2'	
C - M. ARM POLE			SIGNAL POST	2	(1.0)	(6m+L-0.6m)		
24" (600mm)	10	(3.0)	CONTROLLER CAB.	1	(0.5)	BRACKET MOUNTED	13	(4.0)
30" (750mm)	15	(4.6)	FIBER OPTIC	13	(4.0)	PED. PUSHBUTTON	4	(1.2)
			ELECTRIC SERVICE	1	(0.5)	ELECTRIC SERVICE	13.5	(4.1)
			GROUND CABLE	1	(0.5)	SERVICE TO GROUND	13.5	(4.1)
						POST MOUNTED	6	(1.8)

ILLINOIS DEPARTMENT OF TRANSPORTATION  
DIVISION OF HIGHWAY/DISTRICT 1  
201 WEST CENTER COURT/SCHAUMBURG, ILLINOIS 60196-1096  
ENERGY SUPPLY: CONTACT: JOAN COOK  
PHONE: (847) 816-5461  
COMPANY: COMMONWEALTH EDISON

NOTE: INTERIM STAGE; UPON COMPLETION OF CONSTRUCTION

REVISIONS		ILLINOIS DEPARTMENT OF TRANSPORTATION	
NAME	DATE		
		<b>TEMPORARY CABLE PLAN, TEMPORARY PHASE DESIGNATION DIAGRAM AND TEMPORARY EMERGENCY VEHICLE PREEMPTION SEQUENCE</b> PLUM GROVE ROAD AND EUCLID AVENUE ROLLING MEADOWS, ILLINOIS SCALE: N.T.S. DATE: 6/8/2006	
		DRAWN BY: FBP/FCP DESIGNED BY: ABR CHECKED BY: GMZ	

DATE: \_\_\_\_\_ BY: \_\_\_\_\_  
 PLAN NO. \_\_\_\_\_  
 I.D.O.T. PROJECT NO. \_\_\_\_\_  
 I.D.O.T. SHEET NO. \_\_\_\_\_

**CHRISTOPHER B. BURKE ENGINEERING LTD.**  
 9575 West Higgins Road, Suite 600  
 Chicago, Illinois 60638  
 (847) 823-0500

DATE: \_\_\_\_\_ BY: \_\_\_\_\_  
 PLAN NO. \_\_\_\_\_  
 I.D.O.T. PROJECT NO. \_\_\_\_\_  
 I.D.O.T. SHEET NO. \_\_\_\_\_