

NOTE 1: REMOVE EXISTING GUARDRAIL AS REQUIRED TO INSTALL TRAFFIC TERMINAL TY.1, SPECIAL (TANGENT)

NOTE 2: INSTALL GUARDRAIL END SECTION; INCIDENTAL TO GUARDRAIL REMOVAL

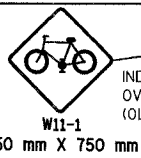
CROSSWALK PAVEMENT MARKING SEE STREET INTERSECTION AND PAVEMENT DETAIL, SHEET 70

PCC SIDEWALK 2 m X 3 m W/DETECTABLE WARNING 0.6 m X 3 m (TYP)

DROP GATE SPECIAL STA. 2+439

PROP. CURVE CL-35
PI STA = 2+325.13
N = 556701.0501
E = 327476.2717
 $\Delta = 4^\circ 34' 26''$ (LT)
R = 313.999 m
T = 12.540 m
L = 25.067 m
E = 0.250 m

PROP. CURVE CL-11
PI STA = 2+413.89
N = 556724.4904
E = 327560.2887
 $\Delta = 30^\circ 16' 14''$ (LT)
R = 30.000 m
T = 8.114 m
L = 15.850 m
E = 1.041 m



INDUSTRY ACCESS BRIDGE OVER THE DES PLAINES RIVER (OLD STEPHEN STREET BRIDGE)

STOP 450mmX450mm

PCC SIDEWALK 2 m X 3 m W/DETECTABLE WARNING 0.6 m X 3 m (TYP)

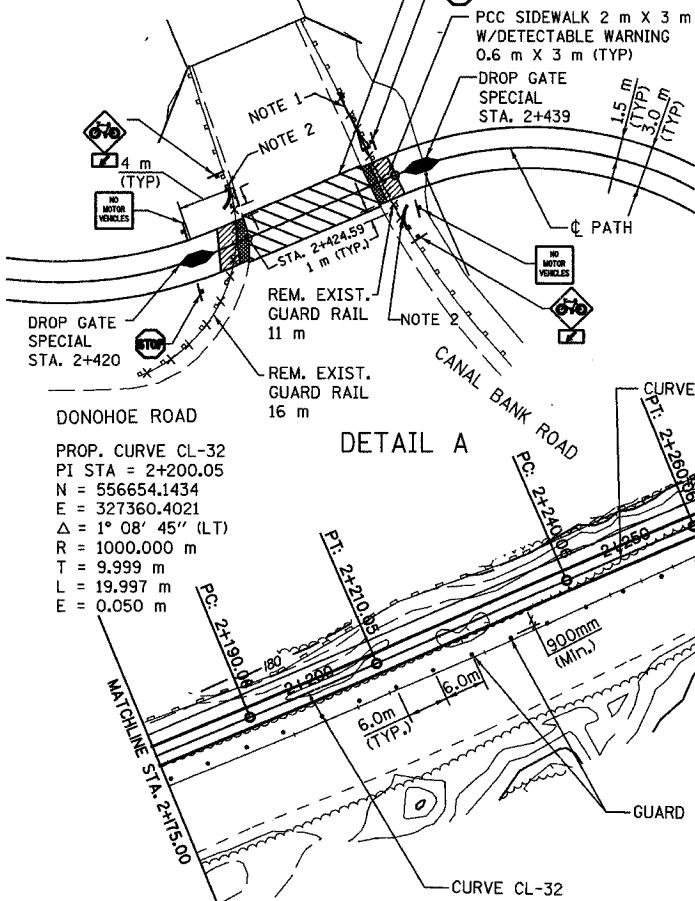
W1-2L 450mmX450mm

DROP GATE SPECIAL STA. 2+496

PROP. CURVE CL-13
PI STA = 2+507.30
N = 556693.714
E = 327631.574
 $\Delta = 20^\circ 51' 02''$ (LT)
R = 41.000 m
T = 7.544 m
L = 14.920 m
E = 0.688 m



PROPOSED BICYCLE TRAIL
AGGREGATE BASE COURSE, TYPE B, 150 mm
HOT-MIX ASPHALT SURFACE COURSE, MIX C, N50, 50mm
PAINT PAVT. MKG. LINE 100 mm (SOLID YELLOW ALONG C)



DETAIL A

DONOHUE ROAD

PROP. CURVE CL-32
PI STA = 2+200.05
N = 556654.1434
E = 327360.4021
 $\Delta = 1^\circ 08' 45''$ (LT)
R = 1000.000 m
T = 9.999 m
L = 19.997 m
E = 0.050 m

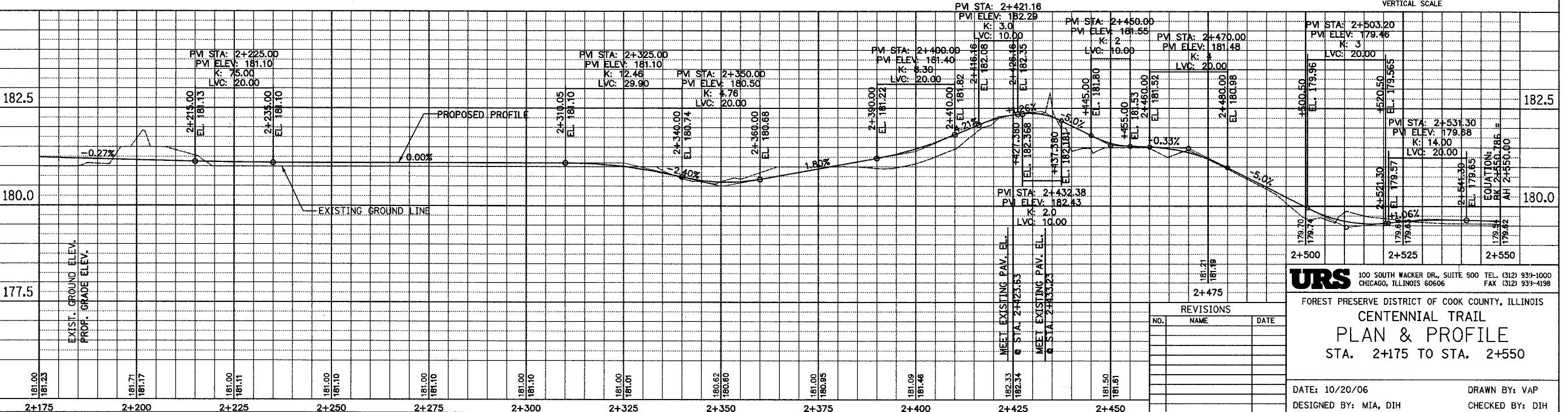
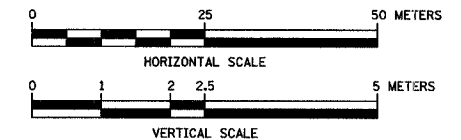
PROP. CURVE CL-34
PI STA = 2+281.25
N = 556674.1995
E = 327406.2143
 $\Delta = 4^\circ 08' 45''$ (RT)
R = 1000.000 m
T = 9.999 m
L = 19.997 m
E = 0.050 m

PROP. CURVE CL-33
PI STA = 2+250.06
N = 556674.1995
E = 327406.2143
 $\Delta = 4^\circ 08' 45''$ (RT)
R = 1000.000 m
T = 9.999 m
L = 19.997 m
E = 0.050 m

PROP. CURVE CL-34
PI STA = 2+300.06
N = 556693.3318
E = 327452.4091
 $\Delta = 4^\circ 34' 26''$ (RT)
R = 313.999 m
T = 12.540 m
L = 25.067 m
E = 0.250 m

PROP. CURVE CL-10
PI STA = 2+393.18
N = 556727.0954
E = 327539.1583
 $\Delta = 29^\circ 31' 33''$ (RT)
R = 50.000 m
T = 13.176 m
L = 25.766 m
E = 1.651 m

PROP. CURVE CL-12
PI STA = 2+458.34
N = 556742.180
E = 327601.476
 $\Delta = 81^\circ 24' 07''$ (RT)
R = 27.000 m
T = 23.224 m
L = 38.360 m
E = 8.614 m



URS 100 SOUTH WACKER DR., SUITE 500 TEL: (312) 939-1000 CHICAGO, ILLINOIS 60606 FAX: (312) 939-4198

FOREST PRESERVE DISTRICT OF COOK COUNTY, ILLINOIS
CENTENNIAL TRAIL
PLAN & PROFILE
STA. 2+175 TO STA. 2+550

DATE: 10/20/06 DRAWN BY: VAP
DESIGNED BY: MIA, DIH CHECKED BY: DIH

REVISIONS		
NO.	NAME	DATE