

SECTION	COUNTY	TOTAL SHEETS	SHEET NO.
94-F3000-05-BT	COOK	102	41
STA. TO STA.		100T PROJECT NO. TE-D001(610)	
CENTENNIAL TRAIL			

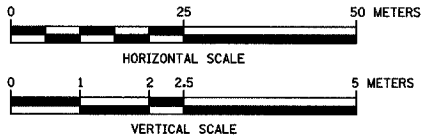
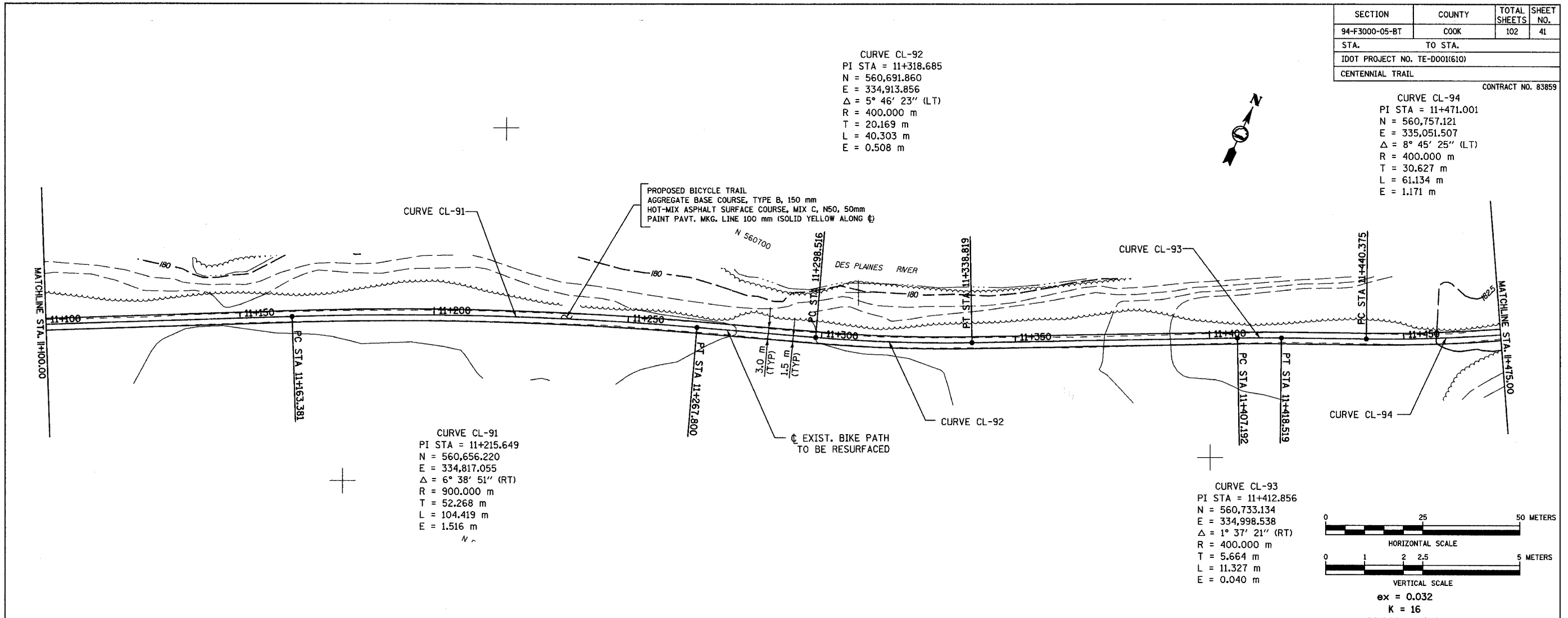
CONTRACT NO. 83859

CURVE CL-92
 PI STA = 11+318.685
 N = 560,691.860
 E = 334,913.856
 $\Delta = 5^\circ 46' 23''$ (LT)
 R = 400.000 m
 T = 20.169 m
 L = 40.303 m
 E = 0.508 m

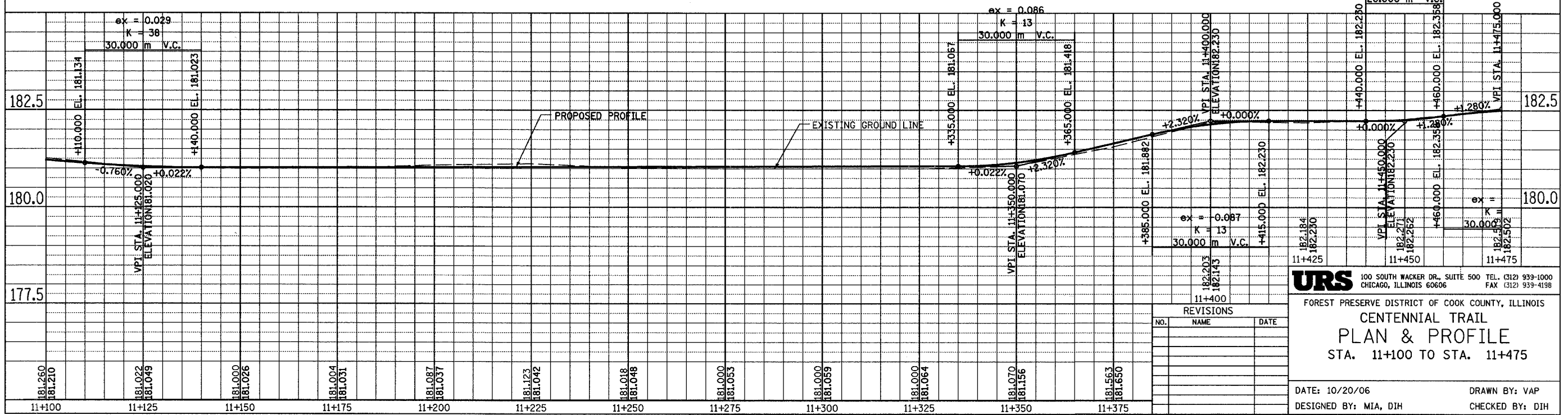
CURVE CL-94
 PI STA = 11+471.001
 N = 560,757.121
 E = 335,051.507
 $\Delta = 8^\circ 45' 25''$ (LT)
 R = 400.000 m
 T = 30.627 m
 L = 61.134 m
 E = 1.171 m

CURVE CL-91
 PI STA = 11+215.649
 N = 560,656.220
 E = 334,817.055
 $\Delta = 6^\circ 38' 51''$ (RT)
 R = 900.000 m
 T = 52.268 m
 L = 104.419 m
 E = 1.516 m

CURVE CL-93
 PI STA = 11+412.856
 N = 560,733.134
 E = 334,998.538
 $\Delta = 1^\circ 37' 21''$ (RT)
 R = 400.000 m
 T = 5.664 m
 L = 11.327 m
 E = 0.040 m



ex = 0.032
 K = 16



NO.	NAME	DATE

URS 100 SOUTH WACKER DR., SUITE 500 TEL: (312) 939-1000
 CHICAGO, ILLINOIS 60606 FAX: (312) 939-4198

FOREST PRESERVE DISTRICT OF COOK COUNTY, ILLINOIS
CENTENNIAL TRAIL
PLAN & PROFILE
 STA. 11+100 TO STA. 11+475

DATE: 10/20/06 DRAWN BY: VAP
 DESIGNED BY: MIA, DIH CHECKED BY: DIH