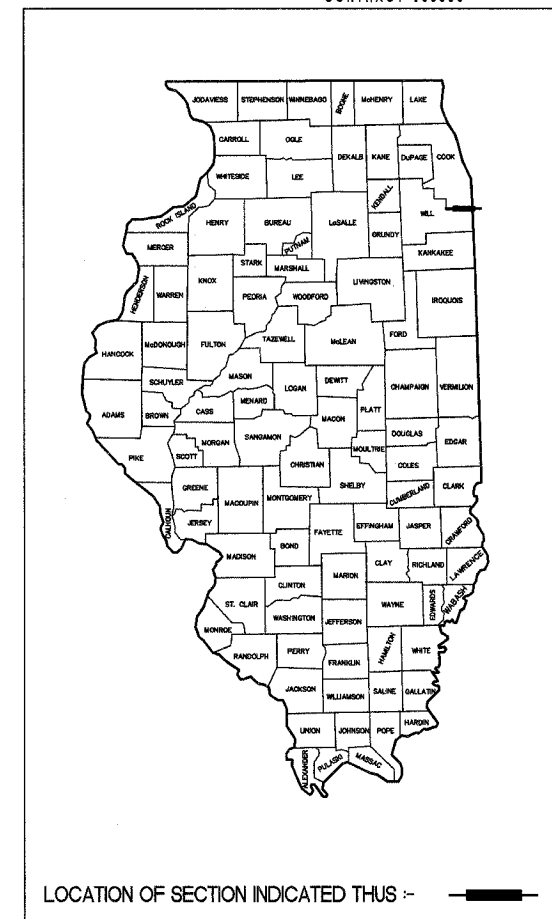


STATE OF ILLINOIS  
DEPARTMENT OF TRANSPORTATION  
DIVISION OF HIGHWAYS

**PLANS FOR PROPOSED  
FEDERAL AID HIGHWAY  
STEGER RD. FAU 1635  
STATE STREET TO WEST OF ILL 394  
STREET LIGHTING  
SECTION: 06-00082-00-LT  
PROJECT: HD-8003 (734)  
VILLAGE OF STEGER  
COOK COUNTY  
JOB No. C91-097-07**

F.A.P. ROUTE	CITY/STATE SECTION	COUNTY	TOTAL SHEETS	SHEET NO.
C-12 STEGER RD.	06-00082-00-LT	COOK	9	1
FHWA. REQ.		ILLINOIS	PROJECT- HD - 8003 (734)	
CONTRACT #83886				



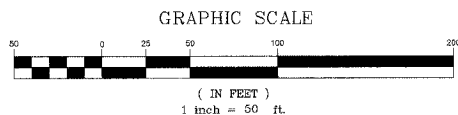
**INDEX OF SHEETS**

- 1 TITLE SHEET
- 2 SUMMARY OF QUANTITIES AND GENERAL NOTES
- 3 POLE FOUNDATIONS AND INSTALLATION DETAILS
- 4 INSTALLATION DETAILS AND LEGEND
- 5 CONTROL CABINET WIRING DIAGRAM
- 6 CIRCUIT WIRING DIAGRAM
- 7 PLAN SHEET STA. 100+00 TO 127+00
- 8 PLAN SHEET STA. 127+00 TO 155+00
- 9 PLAN SHEET STA. 155+00 TO 182+10.12

**STATE STANDARDS**

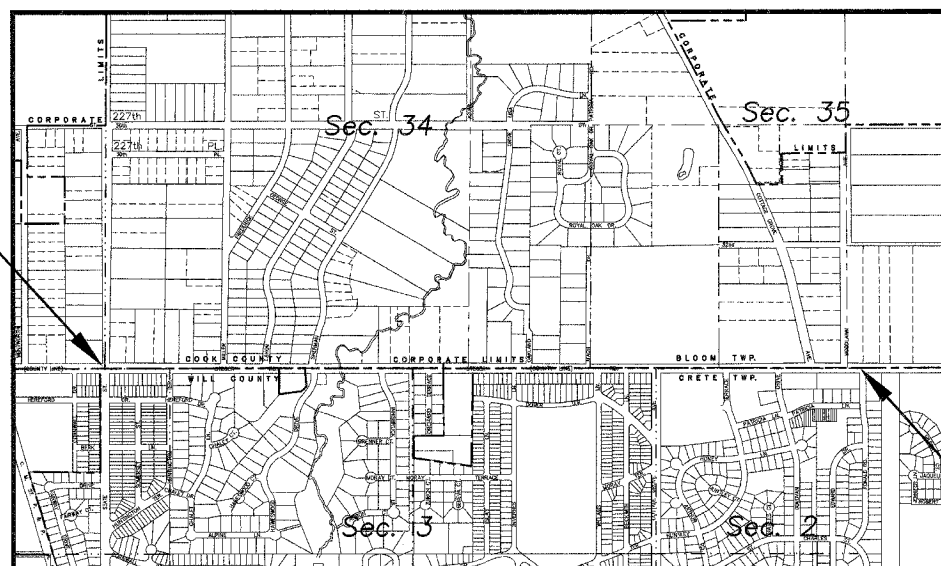
- 702001-06 TRAFFIC CONTROL DEVICES (SHEETS 1, 2, & 3)
- 701501-03 URBAN LANE CLOSURE 2 LANE, TWO WAY UNDIVIDED
- 701502-01 URBAN LANE CLOSURE, 2-LANE, 2 WAY, WITH BI-DIRECTIONAL LEFT TURN LANE.
- 000001-04 STANDARD SYMBOLS, ABBREVIATIONS, AND PATTERNS (SHEETS 1, 2, 3, & 4)
- 701301-02 LANE CLOSURE 2L, 2W SHORT TERM OPERATIONS

SCALE: PLAN 1" = 50'



FULL SIZE PLANS HAVE BEEN PREPARED USING STANDARD ENGINEERING SCALES. REDUCED SIZED PLANS WILL NOT CONFORM TO STANDARD SCALES. IN MAKING MEASUREMENTS ON REDUCED PLANS, THE ABOVE SCALES MAY BE USED.

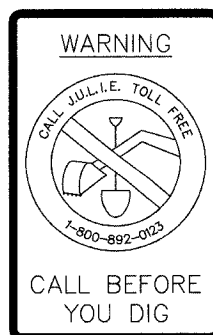
CONTRACT FOR SECTION  
BEGINS AT STATION 100+00  
STEGER ROAD



CONTRACT FOR SECTION  
ENDS AT STATION 182+10.12  
STEGER ROAD

STEGER ROAD: GROSS LENGTH OF IMPROVEMENT= 8,210 FT.  
NET LENGTH OF IMPROVEMENT= 7,877 FT. (1.49 MILES)

LOCATION MAP  
NOT TO SCALE



CALL JULIE  
1 800 892 0123  
48 HOURS  
(TWO WORKING DAYS)  
TOLL FREE!  
24 HOURS A DAY!  
7 DAYS A WEEK!

CONTRACT NO. 83886

**Joseph A. Schudt & Associates**  
19350 S. HARLEM AVENUE FRANKFORT, IL 60423  
PHONE: 708-720-1000 FAX: 708-720-1065  
e-mail: jas@jasaeng.com http://www.jasaeng.com  
CIVIL ENGINEERING LAND SURVEYING ENVIRONMENTAL LAND PLANNING GPS SERVICES

*S. Matthew Horan*  
ILLINOIS PROFESSIONAL ENGINEER No. 062-019927  
SIGNED 2/14/07  
LICENSE EXPIRES 11/30/07

STATE OF ILLINOIS  
DEPARTMENT OF TRANSPORTATION

APPROVED *2/14* 20 *07*  
*Peni Skanner* LOCAL AGENCY OFFICIAL

PASSED *FEBRUARY 22* 2007  
*Christopher Holt*  
DISTRICT #1 ENGINEER OF LOCAL ROADS & STREETS

RELEASING FOR BID BASED ON LIMITED REVIEW *February 23 2007*  
*Diane O'Keefe/CJ*  
DEPUTY DIRECTOR OF HIGHWAYS, REGION #1 ENGINEER