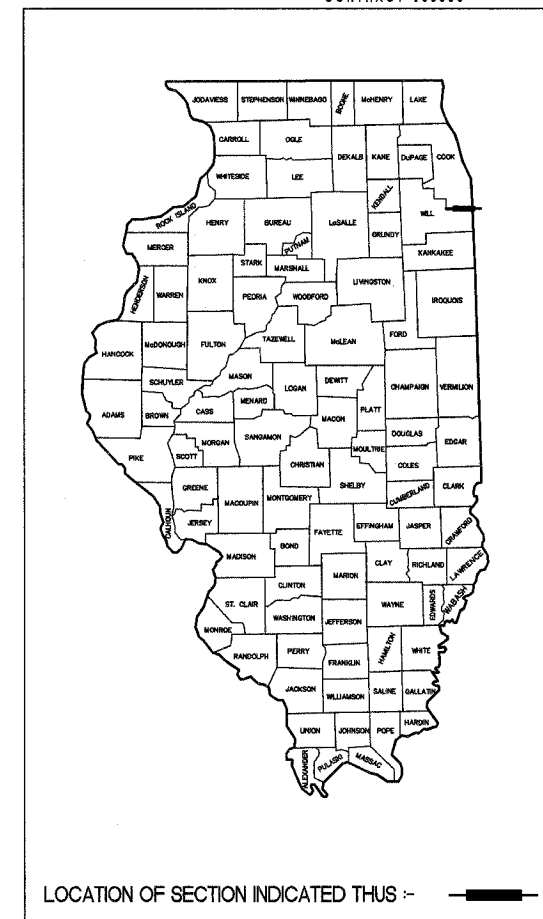


STATE OF ILLINOIS
DEPARTMENT OF TRANSPORTATION
DIVISION OF HIGHWAYS

**PLANS FOR PROPOSED
FEDERAL AID HIGHWAY
STEGER RD. FAU 1635
STATE STREET TO WEST OF ILL 394
STREET LIGHTING
SECTION: 06-00082-00-LT
PROJECT: HD-8003 (734)
VILLAGE OF STEGER
COOK COUNTY
JOB No. C91-097-07**

F.A.P. ROUTE	CITY/STATE SECTION	COUNTY	TOTAL SHEETS	SHEET NO.
C-12 STEGER RD.	06-00082-00-LT	COOK	9	1
FHWA. REQ.		ILLINOIS	PROJECT- HD - 8003 (734)	
CONTRACT #83886				



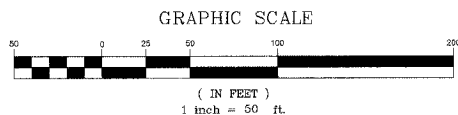
INDEX OF SHEETS

- 1 TITLE SHEET
- 2 SUMMARY OF QUANTITIES AND GENERAL NOTES
- 3 POLE FOUNDATIONS AND INSTALLATION DETAILS
- 4 INSTALLATION DETAILS AND LEGEND
- 5 CONTROL CABINET WIRING DIAGRAM
- 6 CIRCUIT WIRING DIAGRAM
- 7 PLAN SHEET STA. 100+00 TO 127+00
- 8 PLAN SHEET STA. 127+00 TO 155+00
- 9 PLAN SHEET STA. 155+00 TO 182+10.12

STATE STANDARDS

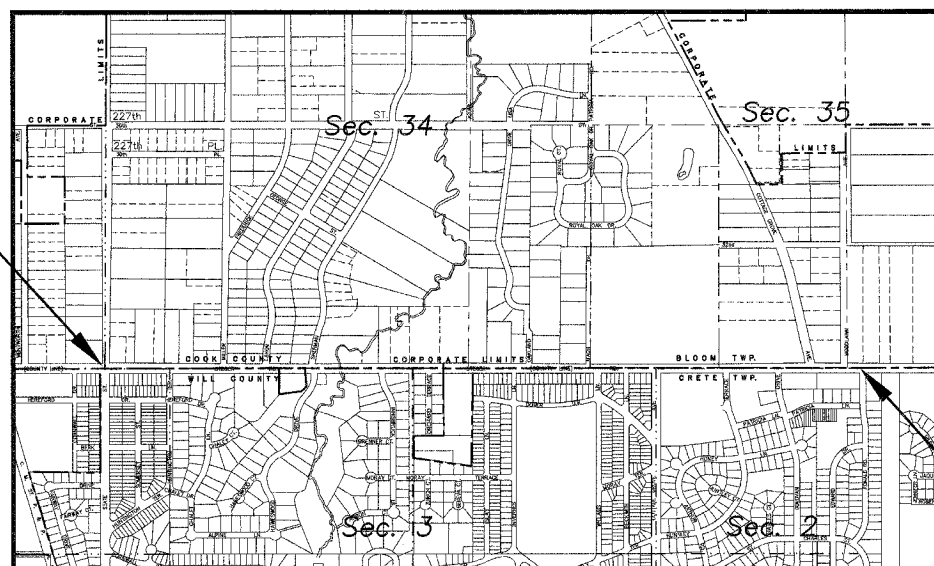
- 702001-06 TRAFFIC CONTROL DEVICES (SHEETS 1, 2, & 3)
- 701501-03 URBAN LANE CLOSURE 2 LANE, TWO WAY UNDIVIDED
- 701502-01 URBAN LANE CLOSURE, 2-LANE, 2 WAY, WITH BI-DIRECTIONAL LEFT TURN LANE.
- 000001-04 STANDARD SYMBOLS, ABBREVIATIONS, AND PATTERNS (SHEETS 1, 2, 3, & 4)
- 701301-02 LANE CLOSURE 2L, 2W SHORT TERM OPERATIONS

SCALE: PLAN 1" = 50'



FULL SIZE PLANS HAVE BEEN PREPARED USING STANDARD ENGINEERING SCALES. REDUCED SIZED PLANS WILL NOT CONFORM TO STANDARD SCALES. IN MAKING MEASUREMENTS ON REDUCED PLANS, THE ABOVE SCALES MAY BE USED.

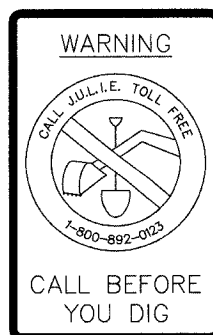
CONTRACT FOR SECTION
BEGINS AT STATION 100+00
STEGER ROAD



CONTRACT FOR SECTION
ENDS AT STATION 182+10.12
STEGER ROAD

STEGER ROAD: GROSS LENGTH OF IMPROVEMENT= 8,210 FT.
NET LENGTH OF IMPROVEMENT= 7,877 FT. (1.49 MILES)

LOCATION MAP
NOT TO SCALE



CALL JULIE
1 800 892 0123
48 HOURS
(TWO WORKING DAYS)
TOLL FREE!
24 HOURS A DAY!
7 DAYS A WEEK!

CONTRACT NO. 83886

Joseph A. Schudt & Associates
19350 S. HARLEM AVENUE FRANKFORT, IL 60423
PHONE: 708-720-1000 FAX: 708-720-1065
e-mail: jas@jasaeng.com http://www.jasaeng.com
CIVIL ENGINEERING LAND SURVEYING ENVIRONMENTAL LAND PLANNING GPS SERVICES

S. Matthew Horan
ILLINOIS PROFESSIONAL ENGINEER No. 062-019927
SIGNED 2/14/07
LICENSE EXPIRES 11/30/07

STATE OF ILLINOIS
DEPARTMENT OF TRANSPORTATION

APPROVED *2/14* 20 *07*
Peni Skanner LOCAL AGENCY OFFICIAL

PASSED *FEBRUARY 22* 2007
Christopher Holt DISTRICT #1 ENGINEER OF LOCAL ROADS & STREETS

RELEASING FOR BID BASED ON LIMITED REVIEW *February 23 2007*
Diane O'Keefe/CJ DEPUTY DIRECTOR OF HIGHWAYS, REGION #1 ENGINEER

FILE	OFF. SECTION	COUNTY	TOTAL SHEETS	SHEET NO.
C-12	06-00082-00-LT	COOK	9	2
STA. N/A	TO STA. N/A			
FED. RD. DIST. NO.	LANES	PROJECT-10-000 (75)	CONTRACT #83886	

**SUMMARY OF QUANTITIES
CONSTRUCTION TYPE CODE Y030-1E**

CODE NO.	PAY ITEM	UNIT	TOTAL QUANTITY
67100100	MOBILIZATION	L SUM	1
70102620	TRAFFIC CONTROL AND PROTECTION STANDARD 701501	L SUM	1
70102622	TRAFFIC CONTROL AND PROTECTION STANDARD 701502	L SUM	1
80400100	ELECTRIC SERVICE INSTALLATION	EACH	1
81000700	CONDUIT IN TRENCH 2-1/2" DIA., GALVANIZED STEEL	FOOT	100
81018600	CONDUIT PUSHED, 2-1/2" DIA., GALVANIZED STEEL	FOOT	1350
81100700	CONDUIT ATTACHED TO STRUCTURE, 2-1/2" DIA., GALVANIZED STEEL	FOOT	75
81300520	JUNCTION BOX, STAINLESS STEEL, ATTACHED TO STRUCTURE, 12"x 8"x 6"	EACH	2
81603080	UNIT DUCT, 600V, 3-1C NO.2, 1/C NO.4 GROUND, (XLP-TYPE USE), 1-1/4" DIA. POLYETHYLENE	FOOT	8370
82102250	LUMINAIRE, SODIUM VAPOR, HORIZONTAL MOUNT, 250 WATT	EACH	41
82500560	LIGHTING CONTROLLER TYPE CB-RCS 200AMP - 480 VOLT	EACH	1
83007200	LIGHT POLE, ALUMINUM, 35 FT. M.H., 6 FT. MAST ARM	EACH	2
83007500	LIGHT POLE, ALUMINUM, 35 FT. M.H., 12 FT. MAST ARM	EACH	39
83600400	POLE FOUNDATION, METAL	EACH	39
XX006849	POLE FOUNDATION EXTENSION 1	EACH	19
XX006850	POLE FOUNDATION EXTENSION 2	EACH	6
83600215	LIGHT POLE FOUNDATION, 24" DIA. OFF-SET	FOOT	30
83800505	BREAKAWAY DEVICE, COUPLING, WITH ALUMINUM SKIRT	EACH	41
40701841	HOT-MIX ASPHALT PAVEMENT (FULL DEPTH), 8"	SQ YD	50
21300010	EXPLORATION TRENCH, SPECIAL	FOOT	20
25100635	HEAVY DUTY EROSION CONTROL BLANKET	SQ YD	340
542A0220	PIPE CULVERTS, CLASS A, TYPE 1 15"	FOOT	20

GENERAL NOTES:

- ALL WORK TO CONFORM TO THE NATIONAL ELECTRICAL CODE AND ANY APPLICABLE LOCAL CODES.
- BEFORE INSTALLING STANDARDS NEAR OVERHEAD FACILITIES, CALL C.E. CO. FOR APPROVAL OF LOCATION.
- FOR LOCATION OF EXISTING UNDERGROUND ELECTRICAL CABLE, CALL C.E. CO.
- ANY TREE TRIMMING REQUIRED, AS DIRECTED BY THE ENGINEER, SHALL BE PERFORMED BY THE CONTRACTOR AND THE COST OF THIS WORK SHALL BE CONSIDERED INCIDENTAL TO THE CONTRACT.
- CONTRACTOR SHALL TAKE ALL NECESSARY MEASURES TO RESTORE ANY SPECIALIZED LANDSCAPING, (i.e. TREES, DECORATIVE ROCKS, SHRUBS, PLANTS, etc.) OR SHALL REPLACE IT, THE COST OF WHICH SHALL BE CONSIDERED INCIDENTAL TO THE CONTRACT.

VILLAGE COORDINATION:

THE CONTRACTOR SHALL NOTIFY THE VILLAGE ENGINEER AT LEAST 72 HOURS IN ADVANCE OF BEGINNING WORK AND SHALL COORDINATE ALL CONSTRUCTION OPERATIONS WITH THE ENGINEER. THE CONTRACTOR SHALL NOTIFY THE PUBLIC WORKS DEPARTMENT OF THE VILLAGES OF STEGER AND CRETE 48 HOURS PRIOR TO ANY WORK IN ORDER TO OBTAIN VILLAGE UTILITY LOCATIONS. THE CONTRACTOR SHOULD PLAN HIS WORK TO AVOID ALL INTERFERENCE WITH THE UNDERGROUND UTILITIES.

PUBLIC OR PRIVATE UTILITIES:

THE LOCATION OF PUBLIC OR PRIVATE UTILITIES SHOWN ON THE PLANS ARE APPROXIMATE, AND THE DEPARTMENT DOES NOT GUARANTEE THEIR ACCURACY. THE CONTRACTOR WILL BE REQUIRED TO ASCERTAIN THE EXACT LOCATIONS OF SUCH UTILITIES AND EXERCISE CARE DURING CONSTRUCTION OPERATIONS, SO AS NOT TO DAMAGE THEM, IN ACCORDANCE WITH THE SPECIAL PROVISIONS AND ARTICLE 107.20 OF THE STANDARD SPECIFICATIONS. THE CONTRACTOR SHALL BE RESPONSIBLE FOR ANY DAMAGE OR DESTRUCTION OF PUBLIC OR PRIVATE PROPERTY AND SHALL RESTORE SUCH PROPERTY AT HIS OWN EXPENSE. COORDINATION OF ALL WORK INVOLVED IN THE CONSTRUCTION AREA WILL BE DISCUSSED AT A PRECONSTRUCTION CONFERENCE. THE CONTRACTOR SHALL USE ALL NECESSARY PRECAUTIONS AND PROTECTIVE MEASURES REQUIRED TO MAINTAIN EXISTING UTILITIES, SEWERS, AND APPURTENANCES THAT MUST BE KEPT IN OPERATION. IN PARTICULAR, THE CONTRACTOR WILL TAKE ADEQUATE MEASURES TO PREVENT THE UNDERMINING OF UTILITIES AND SEWERS WHICH ARE STILL IN SERVICE. WHENEVER THE CONTRACTOR ENCOUNTERS FACILITIES AND APPURTENANCES WITHIN THE LIMITS OF THE IMPROVEMENTS DURING TRENCHING OR AUGERING OPERATIONS, HE WILL BE REQUIRED TO HAND TRENCH IN THAT AREA IN ORDER NOT TO DAMAGE THE FACILITIES.

SURVEY MONUMENTS:

WHERE SECTION OR SUBSECTION MONUMENTS ARE ENCOUNTERED, THE ENGINEER SHALL BE NOTIFIED BEFORE SUCH MONUMENTS ARE REMOVED. THE CONTRACTOR SHALL PROTECT AND CAREFULLY PRESERVE ALL PROPERTY MARKS OR MONUMENTS UNTIL THE OWNER, HIS AGENT, OR AN AUTHORIZED SURVEYOR HAS WITNESSED OR OTHERWISE REFERENCED THEIR LOCATIONS.

DRAINAGE STRUCTURES:

WHEREVER DURING CONSTRUCTION OPERATIONS ANY LOOSE MATERIAL IS DEPOSITED IN THE FLOW LINE OF DRAINAGE STRUCTURES SUCH THAT THE NATURAL FLOW OF WATER IS OBSTRUCTED, IT SHALL BE REMOVED AT THE CLOSE OF EACH WORKING DAY. AT THE CONCLUSION OF CONSTRUCTION OPERATIONS, ALL DRAINAGE STRUCTURES SHALL BE FREE FROM DIRT AND DEBRIS. THE WORK SPECIFIED ABOVE WILL NOT BE PAID FOR SEPARATELY, BUT SHALL BE CONSIDERED AS INCIDENTAL TO THE CONTRACT. WHEN EXISTING DRAINAGE FACILITIES ARE DISTURBED, THE CONTRACTOR SHALL PROVIDE AND MAINTAIN TEMPORARY OUTLETS AND CONNECTIONS FOR ALL PRIVATE OR PUBLIC DRAINS, SEWERS, OR CATCH BASINS. HE SHALL PROVIDE FACILITIES TO TAKE IN ALL STORM WATER WHICH WILL BE RECEIVED BY THESE DRAINS AND SEWERS AND DISCHARGE THE SAME. HE SHALL PROVIDE AND MAINTAIN AN EFFICIENT PUMPING PLANT, IF NECESSARY, AND A TEMPORARY OUTLET AND BE PREPARED AT ALL TIMES TO DISPOSE OF THE WATER RECEIVED FROM THESE TEMPORARY CONNECTIONS. THIS WORK WILL NOT BE PAID FOR DIRECTLY BUT SHALL BE CONSIDERED INCIDENTAL TO THE CONTRACT.

FIELD OBSERVATION:

IT IS THE CONTRACTOR'S RESPONSIBILITY TO ASCERTAIN EXISTING FIELD CONDITIONS BEFORE BIDDING ON THE PROJECT, SPECIFICALLY AS THEY RELATE TO LUMP SUM ITEMS. IT IS THE CONTRACTORS RESPONSIBILITY TO VERIFY ALL DIMENSIONS AND CONDITIONS EXISTING IN THE FIELD PRIOR TO CONSTRUCTION AND ORDERING MATERIALS.

GENERAL NOTES:

CARE IS TO BE TAKEN AS NOT TO DAMAGE ANY OF THE EXISTING TRAFFIC SIGNAL CONDUITS, DETECTORS AND EQUIPMENT. IF ANY OF THE TRAFFIC SIGNAL CONDUIT AND/OR EQUIPMENT IS DAMAGED, THE CONTRACTOR SHALL REPAIR AND/OR REPLACE THE CONDUIT AND/OR EQUIPMENT AT NO COST TO THE COUNTY, STATE OR THE VILLAGE.


GROUND RODS WILL BE SPLICED AT ALL CONCRETE FOUNDATIONS AND ELSE WHERE AS SHOWN IN THE CONTRACT DRAWINGS. EQUIPMENT GROUND CONDUCTORS SHALL BE SPLICED AND BONDED AT EACH PIECE OF EQUIPMENT.

THE CONTRACTOR SHALL MAKE SPECIAL NOTE OF THE REQUIREMENTS FOR WIRE MARKERS AND SHALL TAG ALL WIRE ACCORDINGLY.

CONDUIT AND UNIT DUCT MUST BE POSITIONED IN THE FIELD TO AVOID CONFLICT WITH TREES, BUSHES, DRAINS AND OTHER UTILITIES AND LANDSCAPING.

ALL DISTURBED AREA WHERE RESTORATION IS NOT COVERED BY APPLICABLE SECTIONS OF THE SPECIAL PROVISIONS MUST BE RESTORED TO THE SATISFACTION OF THE ENGINEER. THE WORK MUST BE CONSIDERED INCIDENTAL TO THE CONTRACT. SEPARATE PAYMENT WILL NOT BE MADE.

THE EXACT LOCATIONS OF ALL UTILITIES SHALL BE VERIFIED BY THE CONTRACTOR BEFORE THE INSTALLATION OF ANY COMPONENTS OF THE LIGHTING SYSTEM. FOR LOCATIONS OF THE UTILITIES, CALL JULIE TOLL FREE AT 1-800-892-0123. IT IS THE CONTRACTORS RESPONSIBILITY TO LOCATE EXISTING TRAFFIC SIGNAL CABLES AND CONDUITS.

Joseph A. Schudt & Associates

 19350 S. HARLEM AVENUE FRANKFORT, IL 60423
 PHONE: 708-720-1000 FAX: 708-720-1065
 e-mail: jas@jaseng.com http://www.jaseng.com
 CIVIL ENGINEERING LAND SURVEYING ENVIRONMENTAL LAND PLANNING GPS SERVICES

COPYRIGHT © 2008
JOSEPH A. SCHUDT & ASSOCIATES
ALL RIGHTS RESERVED

**Village of Steger
Steger Road Lighting Project**

REVISIONS	
NAME	DATE

ILLINOIS DEPARTMENT OF TRANSPORTATION

**Summary of Quantities
and General Notes**

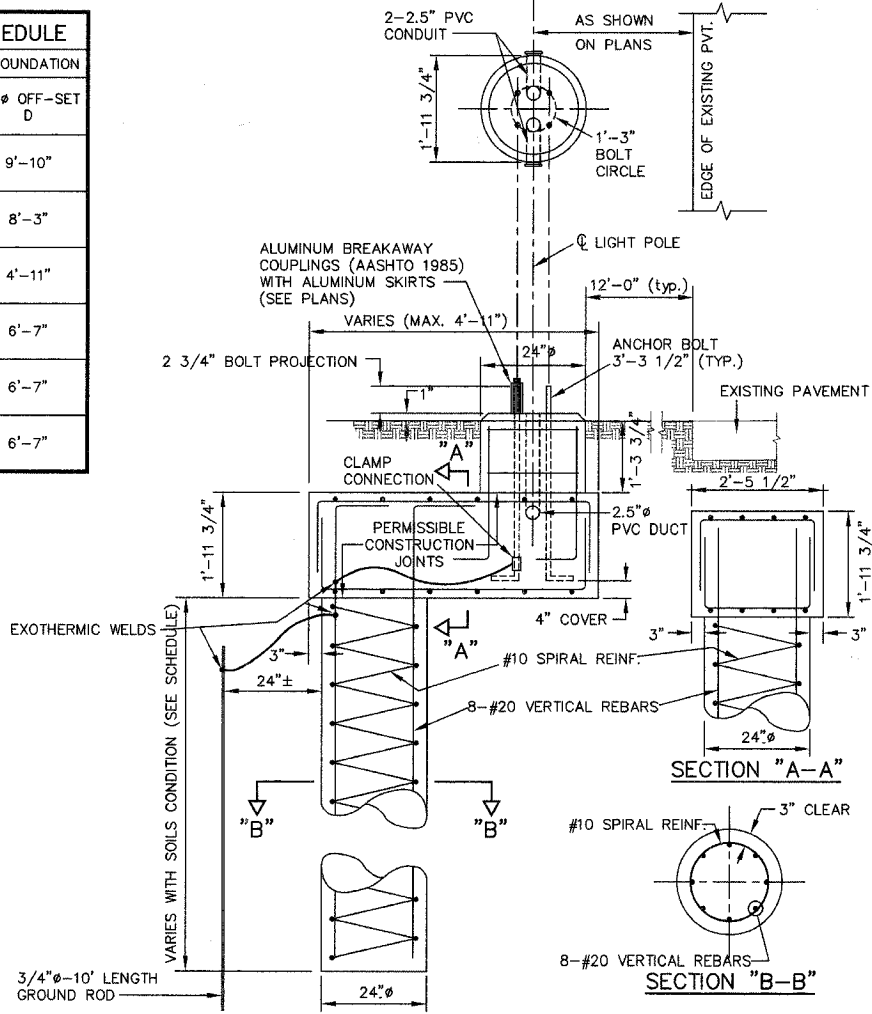
SCALE: AS SHOWN DRAWN BY: A.A.D.
DATE: 2-15-07 CHECKED BY: S.M.H.

EXTENSION LOCATION CHART

LIGHT #	NOT REQUIRED	1 FOOT	2 FOOT
B9	●		
A9	●		
B8		●	
A8	●		
B7		●	
A7		●	
B6		●	
A6	●		
B5	●		
A5			●
B4		●	
A4		●	
B3		●	
A3	●		
B2	●		
A2	●		
B1	●		
A1		●	
C1		●	
D1		●	
C2	●		
D2		●	
C3		●	
D3	●		
C4		●	
D4	●		
C5		●	
D5		●	
C6		●	
D6			●
C7			●
D7			●
C8	●		
D8	●		
C9		●	
D9		●	
C10		●	
D10		●	
C11			●
D12	●		
C12	●		

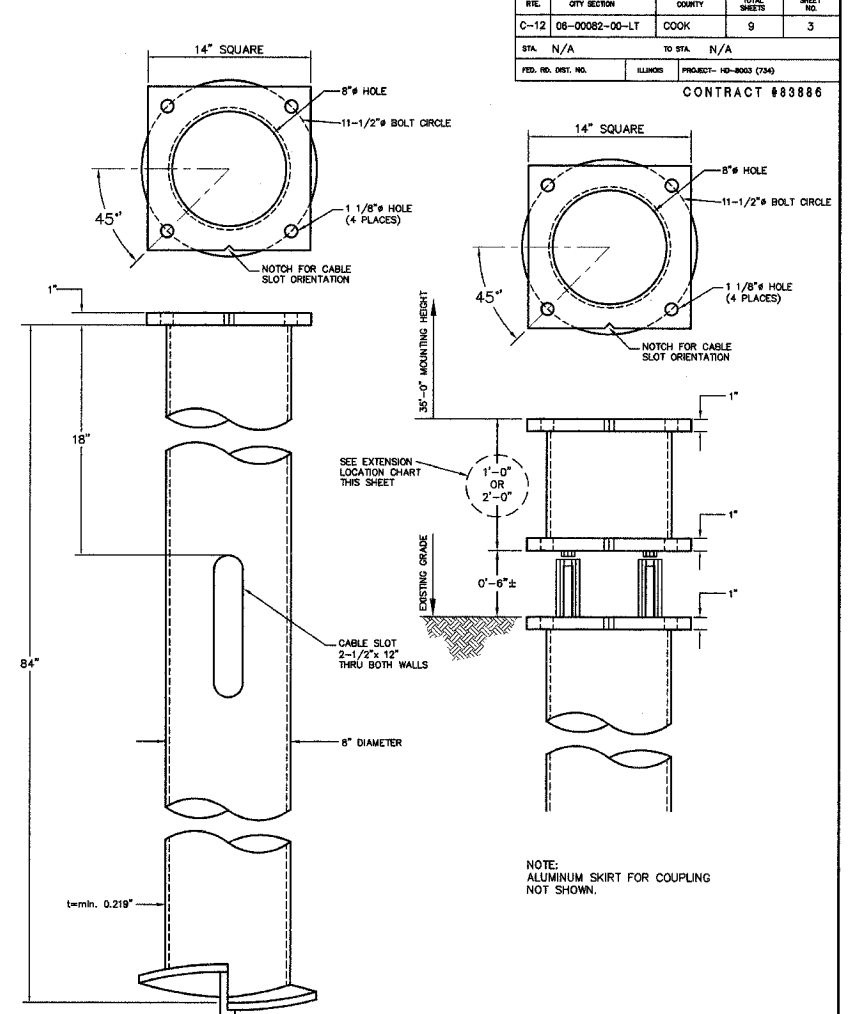
FOUNDATION DESIGN SCHEDULE

TYPE OF SOIL	DESIGN DEPTH OF FOUNDATION	
	TYPICAL D	24"Ø OFF-SET D
SOFT CLAY	13'-2"	9'-10"
MEDIUM CLAY	9'-10"	8'-3"
STIFF CLAY	6'-7"	4'-11"
LOOSE SAND	9'-0"	6'-7"
MEDIUM SAND	8'-3"	6'-7"
DENSE SAND	8'-3"	6'-7"



Light Pole Foundation - 24"Ø Off-Set

NOTE:
IDENTICAL TO TYPICAL FOUNDATION WITH EXCEPTION OF CANTILEVER
ENGINEER SHALL BE CONTACTED IF OBSTRUCTION IS ENCOUNTERED
WHICH REQUIRES CANTILEVER FOUNDATION.

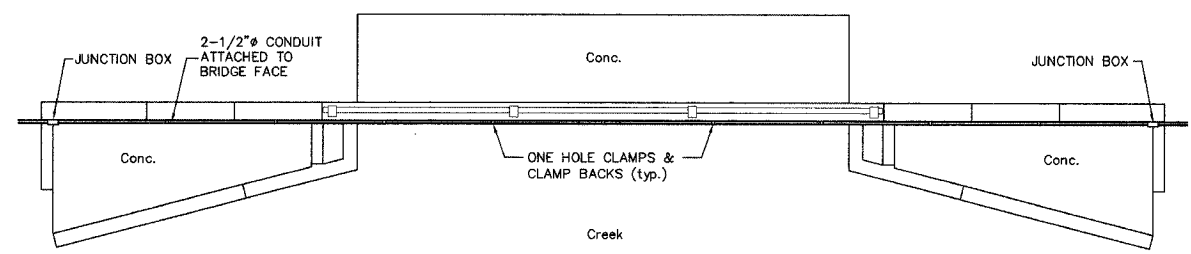


Helix Pole Foundation

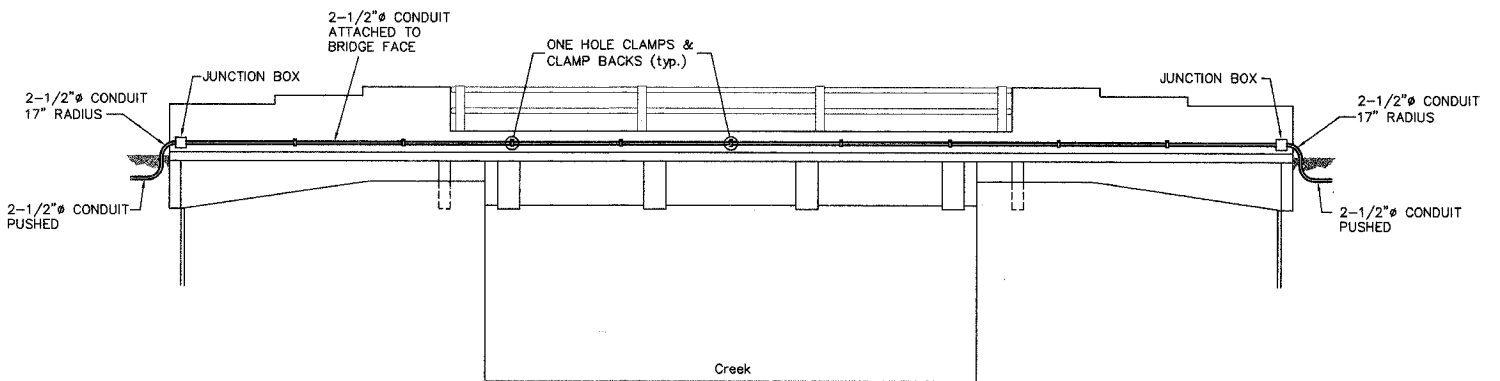
NOTE:
FABRICATION SHALL BE AS SPECIFIED IN SECTION 1070 OF STANDARD SPECIFICATIONS.

REV.	CITY SECTION	QUANTITY	TOTAL SHEETS	SHEET NO.
C-12	08-00082-00-LT	COOK	9	3
STA.	N/A	TO STA.	N/A	
FED. PROJ. NO.	ILLINOIS	PROJECT	10-0003 (70)	

CONTRACT #83886



Bridge North Plan



Bridge North Elevation

Bridge Cable Crossing

Not to Scale

Joseph A. Schudt & Associates
 19350 S. HARLEM AVENUE FRANKFORT, IL 60423
 PHONE: 708-720-1000 FAX: 708-720-1065
 e-mail: jas@jasaeng.com http://www.jasaeng.com
 CIVIL ENGINEERING LAND SURVEYING ENVIRONMENTAL LAND PLANNING GPS SERVICES

COPYRIGHT © 2006
 JOSEPH A. SCHUDT & ASSOCIATES
 ALL RIGHTS RESERVED

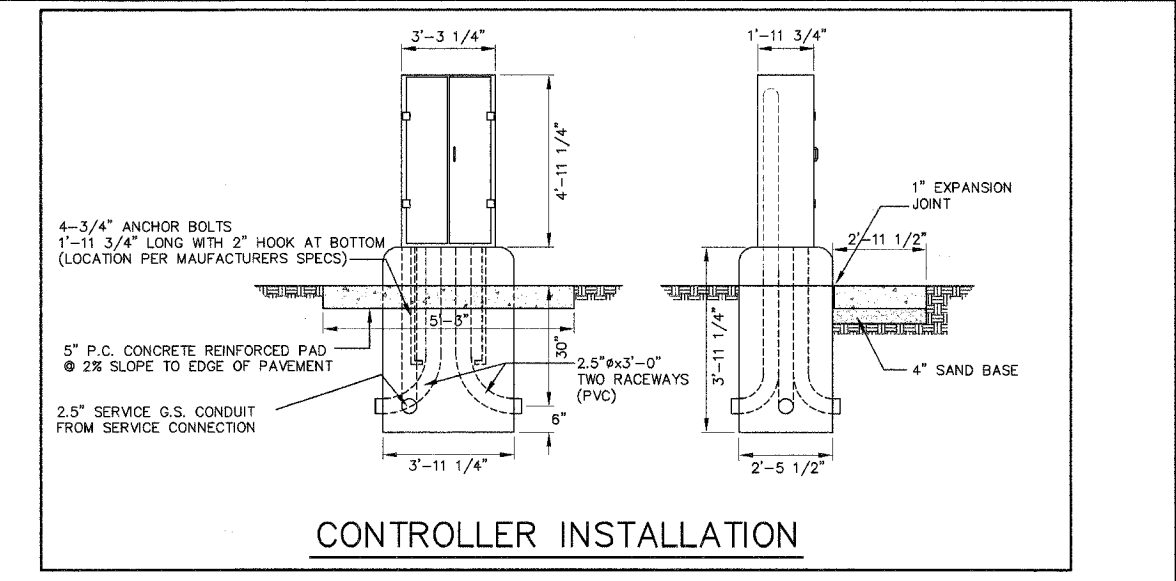
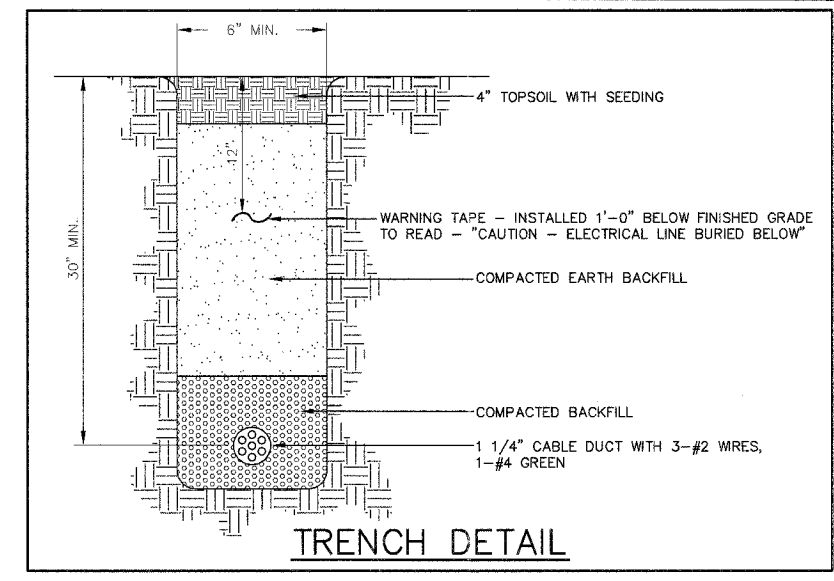
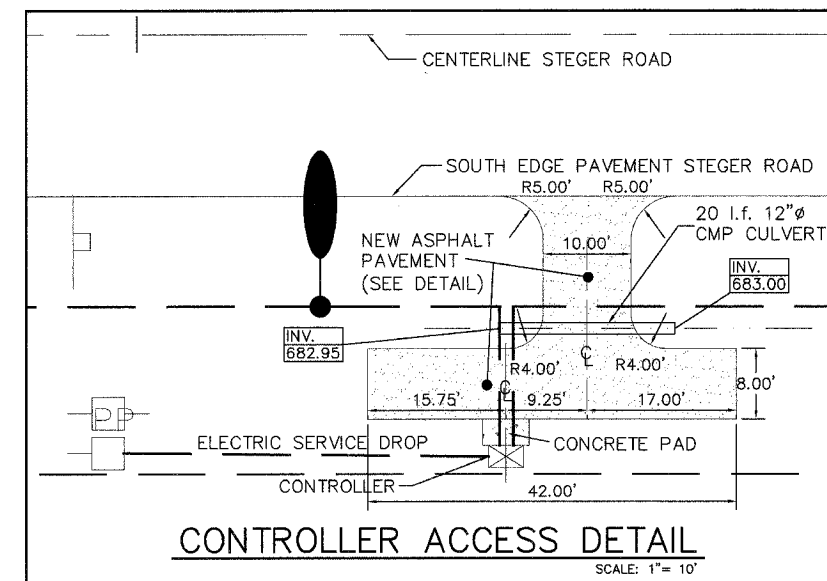
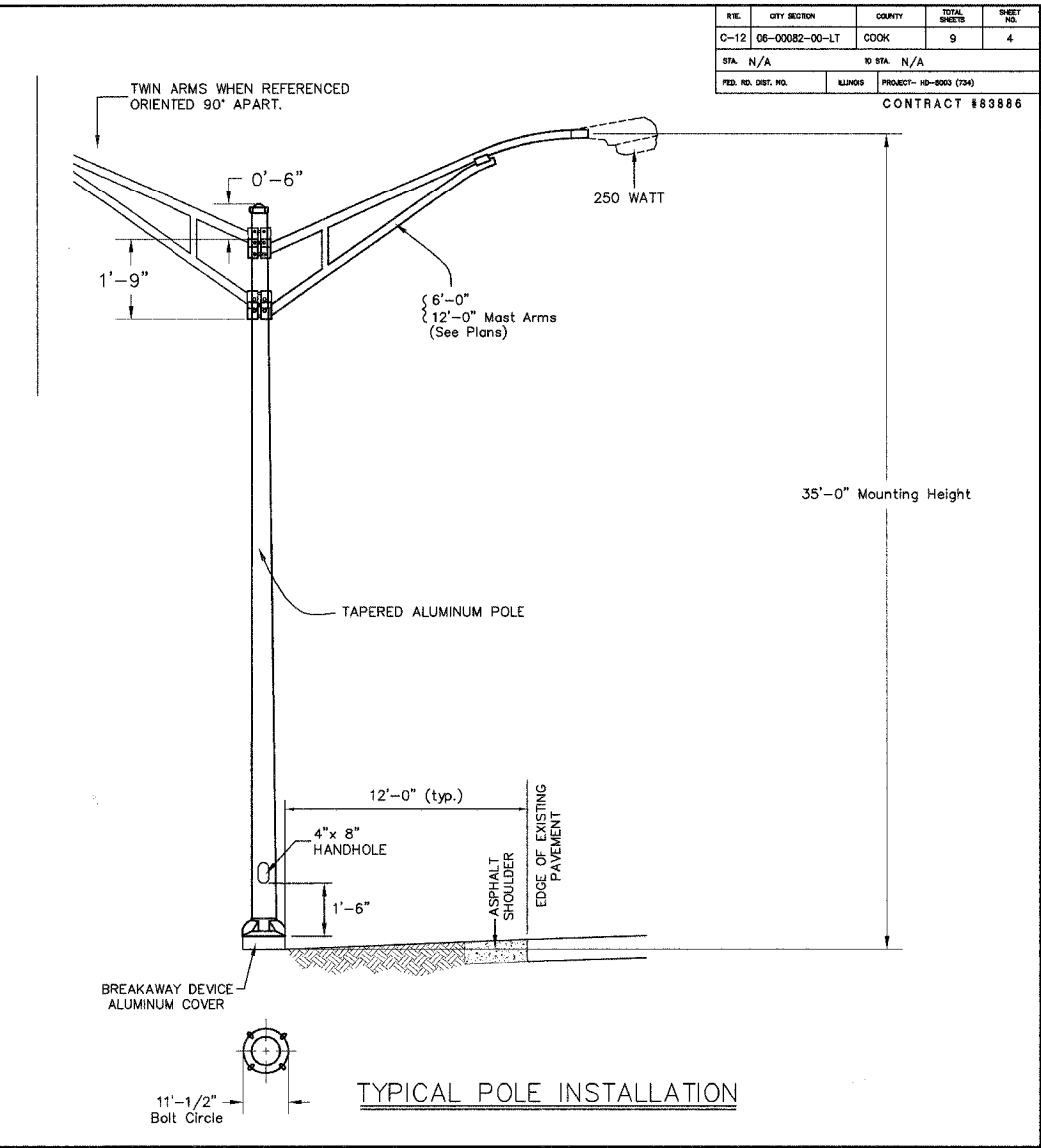
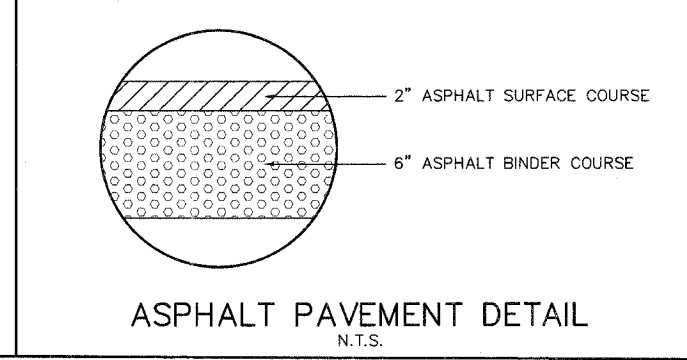
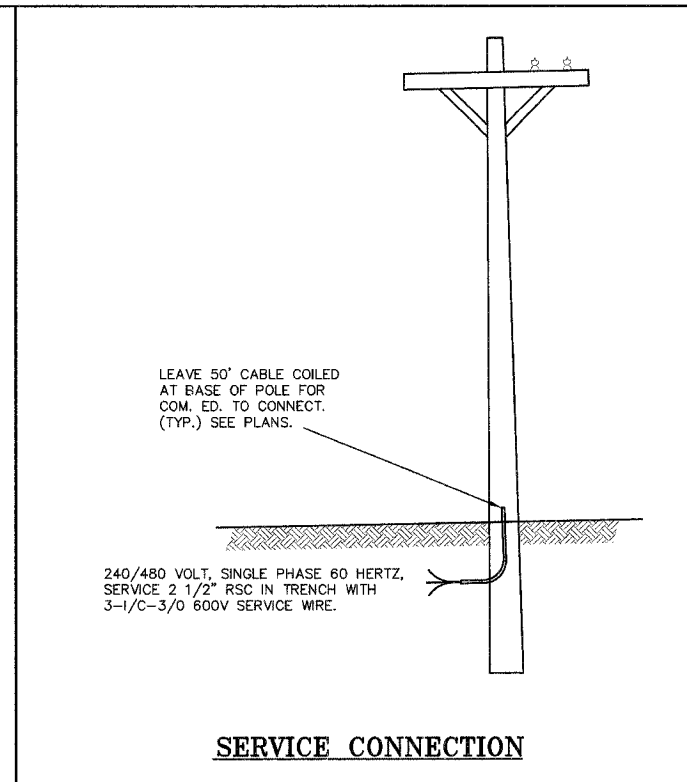
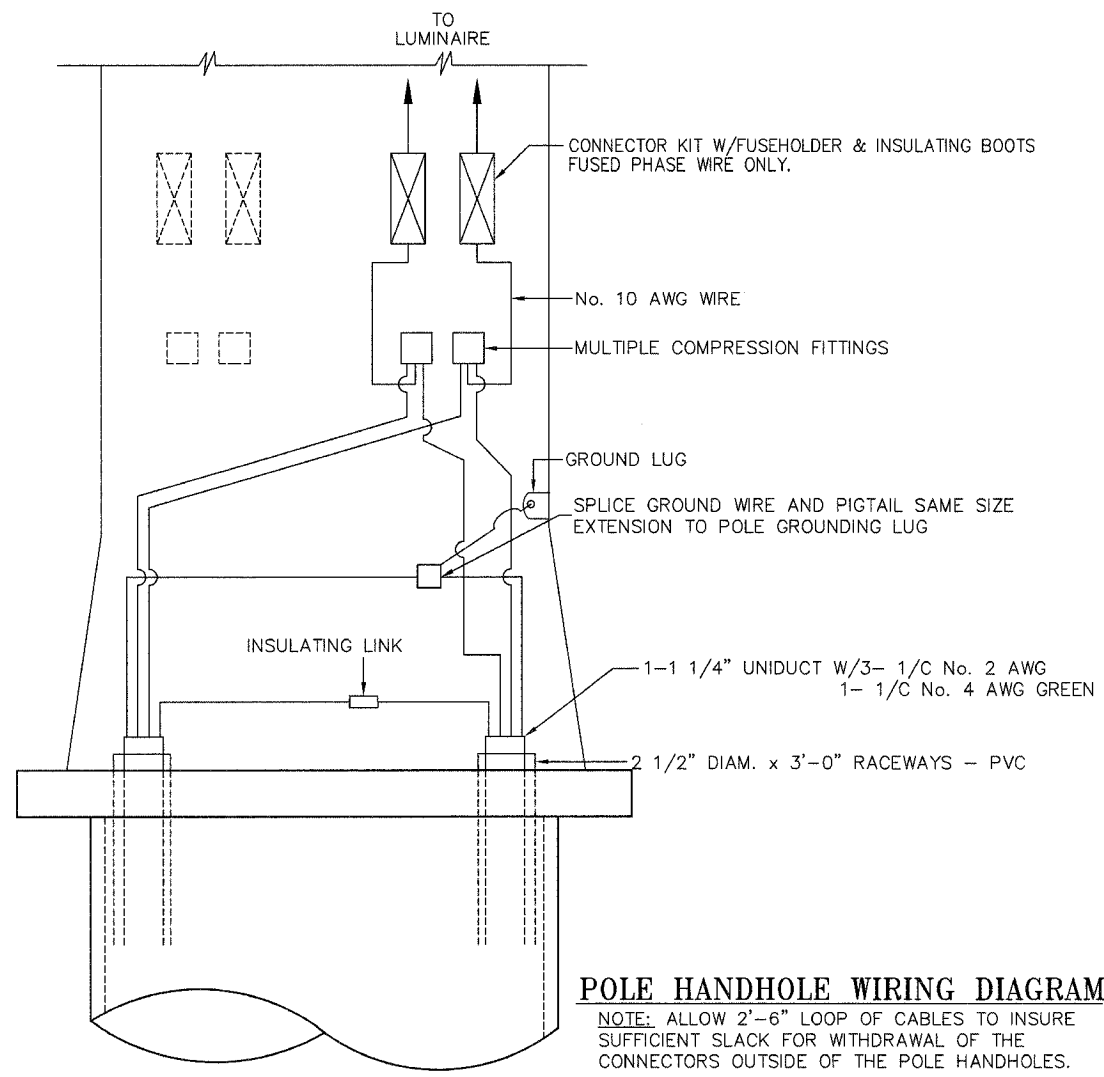
**Village of Steger
 Steger Road Lighting Project**

REVISIONS	
NAME	DATE

ILLINOIS DEPARTMENT OF TRANSPORTATION
**Pole Foundations
 and Installation Details**

SCALE: AS SHOWN DRAWN BY: A.A.D.
 DATE: 2-15-07 CHECKED BY: S.M.H.

REV.	CITY SECTION	COUNTY	TOTAL SHEETS	SHEET NO.
C-12	06-00082-00-LT	COOK	9	4
STA. N/A	TO STA. N/A			
FED. RD. DIST. NO.	BLDG'S	PROJECT-10-003 (794)	CONTRACT #83886	



Hot-Mix Asphalt Mixture Requirements		
MIXTURE TYPE	AC TYPE	AIR VOIDS
HOT-MIX ASPHALT SURFACE COURSE, MIX "D", N70	PG 64-22	4% @ 70Gyr.
HOT-MIX ASPHALT BINDER COURSE, IL-19.0, N70	PG 64-22	4% @ 70Gyr.

The Unit Weight used to calculate all Hot-Mix Surface Mixture quantities is 112 lbs/sq yd/in. When RAP exceeds 20%, the new asphalt binder in the mix shall be PG 58-22.

Joseph A. Schudt & Associates
 19350 S. HARLEM AVENUE FRANKFORT, IL 60423
 PHONE: 708-720-1000 FAX: 708-720-1065
 e-mail: jae@jaseng.com http://www.jaseng.com
 CIVIL ENGINEERING LAND SURVEYING ENVIRONMENTAL LAND PLANNING GPS SERVICES

COPYRIGHT © 2008
 JOSEPH A. SCHUDT & ASSOCIATES
 ALL RIGHTS RESERVED

**Village of Steger
 Steger Road Lighting Project**

REVISIONS	
NAME	DATE

ILLINOIS DEPARTMENT OF TRANSPORTATION

**Installation Details
 and Legend**

SCALE: AS SHOWN DRAWN BY: A.A.D.
 DATE: 2-15-07 CHECKED BY: S.M.H.

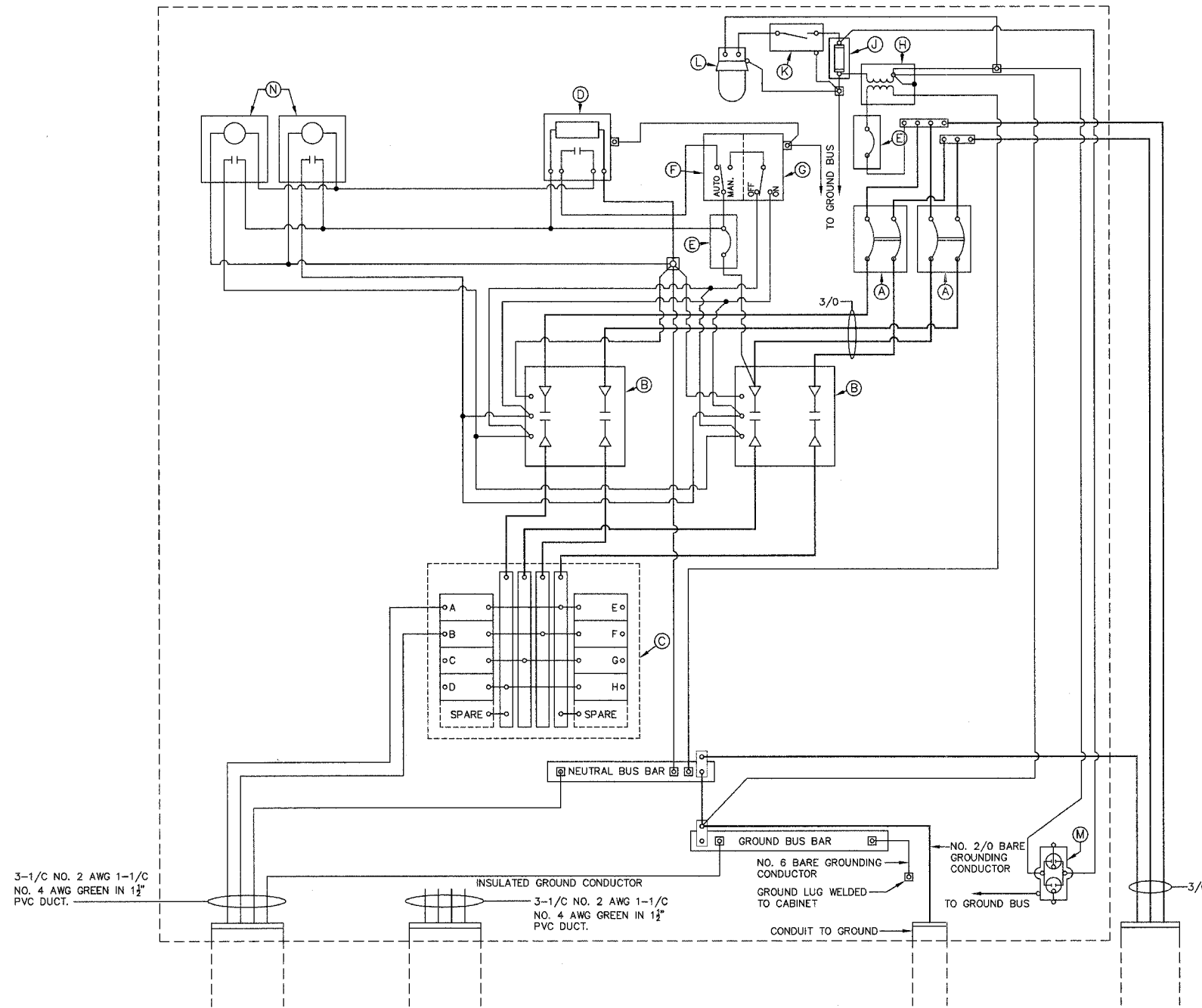
REV.	CITY SECTION	QUANTITY	TOTAL SHEETS	SHEET NO.
C-12	DB-00082-00-LT	COOK	9	5
STA. N/A	TO STA. N/A			
FED. RD. DIST. NO.	ILLINOIS	PROJECT-10-8003 (794)	CONTRACT #83886	

DEVICE SCHEDULE		
ITEM	QUAN.	DESCRIPTION
(A)	2	CIRCUIT BREAKER, MOLDED CASE, THERMAL MAGNETIC, 2-POLE, 600V. A.C., 225A. FRAME, 175A. NON-INTERCHANGEABLE TRIP, BOLT-ON TYPE; INTERRUPTING CAPACITY OF NOT LESS THAN 22,000 RMS SYMMETRICAL AMPERES AT 480V.
(B)	2	LIGHTING CONTACTOR (REMOTE CONTROL SWITCH) MECHANICALLY HELD, ASCO 920, MOUNTED ON SUB PANEL 200A., 2-POLE, 600V. WITH 240V. COIL
(C)	1	PANEL BOARD (INTERIOR ONLY) 480/240V. SINGLE PHASE WITH 200A. COPPER MAINS AND EIGHT IP-70A BOLT-ON BRANCH BREAKERS EACH RATED 277V. WITH INTERRUPTING CAPACITY OF NOT LESS THAN 14,000 RMS SYMMETRICAL AMPERES AT 277V.
(D)	1	TIME CLOCK: 240V. 60HZ. MICROPROCESSOR BASED 2-CHANNEL CONTROLLER WITH ASTRONOMIC FUNCTIONS. RATED FOR -30 DEGREES C. TO +70 DEGREES C.
(E)	1	CIRCUIT BREAKER, MOLDED CASE, THERMAL MAGNETIC, 1-POLE, 277V., BOLT-ON TYPE, WITH AN INTERRUPTING RATING OF NOT LESS THAN 14,000 RMS SYMMETRICAL AMPERES AT 277V.
(F)	1	CONTROL SWITCH, TOGGLE TYPE, SPDT, 20A., 240V. PREMIUM SPEC. GRADE
(G)	1	CONTROL SWITCH, MOMENTARY CONTACT, SPDT, 15A., 240V.
(H)	1	STEP DOWN TRANSFORMER 240V.-120V., 1KVA.
(J)	1	FUSE HOLDER 15A., 250V., 5A. FUSE
(K)	1	MICRO SWITCH (MOUNT WITH ACTUATOR TO SWITCH WHEN DOOR OPENED)
(L)	1	60 WATT LIGHT FIXTURE, VAPOR TIGHT, WITH GLOBE AND GUARD AND MOUNTING BOX
(M)	1	GFI RECEPTACLE, 120V., 15A., PREMIUM SPEC. GRADE, NEMA REFERENCE 5-15R IN WEATHER PROOF BOX WITH FLAP TYPE COVER
(N)	2	CONTROL RELAY 240V., DPDT 25A.

NOTES:

- ALL CONTROL CABINET ITEMS SHALL HAVE SUITABLE IDENTIFICATION. OPEN CIRCUIT BREAKERS, CONTACTORS AND OTHER OPEN DEVICES SHALL HAVE PERMANENT SELF STICKING TAGS. DEVICES IN ENCLOSURES SHALL HAVE ENGRAVED 2-COLOR LAMINATED PLASTIC NAMEPLATES ATTACHED TO ENCLOSURES WITH SCREWS. NAME PLATES SHALL BE ENGRAVED TO CORRESPOND TO DESIGNATIONS ON THE DRAWINGS. INTERNAL CABINET WIRING SHALL BE IDENTIFIED AS INDICATED OR AS DIRECTED BY THE ENGINEER BY MEANS OF SELF-STICKING TAGS APPLIED AT EACH CONNECTED END. IDENTIFICATION SHALL BE MADE BY THE CABINET MANUFACTURER.
- PROVIDE SEALING GROMMETS FOR ALL OPEN WIRING EXTENDED FROM DEVICES IN BOXES OR CABINETS WITHIN THE CONTROL CABINET.
- ALL CONTROL WIRING SHALL BE #12AWG STRANDED UNLESS OTHERWISE INDICATED.
- ALL WIRING SHALL BE NEATLY DRESSED AND SUPPORTED.
- THE CONTROLLER SHALL BE CONSTRUCTED TO U.L. STD. 508 AND BEAR THE U.L. LABEL "ENCLOSED INDUSTRIAL CONTROL PANEL"
- SEE CABINET AND FOUNDATION DETAIL SHEET FOR SCHEMATIC DIAGRAM AND DEVICE LAYOUT.

CIRCUIT	AMPS	WATTS	V LOSS
A	11.7	2745	8.16
B	11.7	2745	9.08
C	15.6	3660	13.72
D	14.3	3355	12.59



Joseph A. Schudt & Associates
 19350 S. HARLEM AVENUE FRANKFORT, IL 60423
 PHONE: 708-720-1000 FAX: 708-720-1065
 e-mail: jsa@jaseng.com http://www.jaseng.com
 CIVIL ENGINEERING LAND SURVEYING ENVIRONMENTAL LAND PLANNING GPS SERVICES
 COPYRIGHT © 2006
 JOSEPH A. SCHUDT & ASSOCIATES
 ALL RIGHTS RESERVED

Village of Steger
 Steger Road Lighting Project

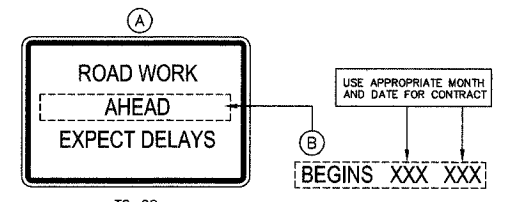
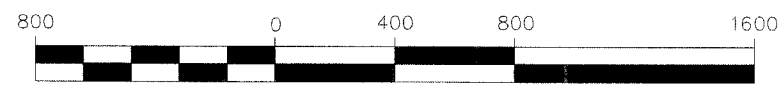
REVISIONS	
NAME	DATE

ILLINOIS DEPARTMENT OF TRANSPORTATION
**Control Cabinet
 Wiring Diagram**
 SCALE: AS SHOWN DRAWN BY: A.A.D.
 DATE: 2-15-07 CHECKED BY: S.M.H.

FILE	CITY SECTION	COUNTY	TOTAL SHEETS	SHEET NO.
C-12	06-00082-00-LT	COOK	9	6
STA. 100+00.00		TO STA. 182+10.12		
FILE NO. DIST. NO.	KLINGSTUBBINS	PROJECT	10-8063 (2ND)	
CONTRACT # 83886				



GRAPHIC SCALE



TC-22

- NOTES:**
1. USE BLACK LETTERING ON ORANGE BACKGROUND.
 2. ERECT SIGNS IN ADVANCE OF THE LOCATION FOR THE "ROAD CONSTRUCTION AHEAD" SIGN AT LOCATIONS AS DIRECTED BY THE ENGINEER.
 3. ERECT SIGN (A) WITH INSTALLED PANEL (B) ONE WEEK PRIOR TO THE START OF CONSTRUCTION.
 4. REMOVE PANEL (B) SOON AFTER THE START OF CONSTRUCTION.
 5. SEE SPECIAL PROVISION FOR "TEMPORARY INFORMATION SIGNING" FOR ADDITIONAL INFORMATION.
 6. ONE SIGN ASSEMBLY EQUALS 25.7 SQ. FT.

Legend

- STREET LIGHT ON RED CABLE 250W
- STREET LIGHT ON BLACK CABLE 250W
- 2 CIRCUIT DESIGNATION
- PROPOSED UNIT DUCT (3#2 1#4 G)
- CONTROLLER LOCATION
- EXISTING STREET LIGHT
- ⌵ PROPOSED TC-22 SIGN LOCATION



Joseph A. Schudt & Associates
 19350 S. HARLEM AVENUE FRANKFORT, IL 60423
 PHONE: 708-720-1000 FAX: 708-720-1065
 e-mail: jas@jaseng.com http://www.jaseng.com
 CIVIL ENGINEERING LAND SURVEYING ENVIRONMENTAL LAND PLANNING GPS SERVICES

Village of Steger Steger Road Lighting Project

REVISIONS	
NAME	DATE

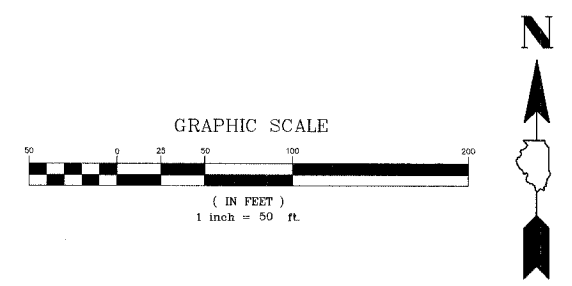
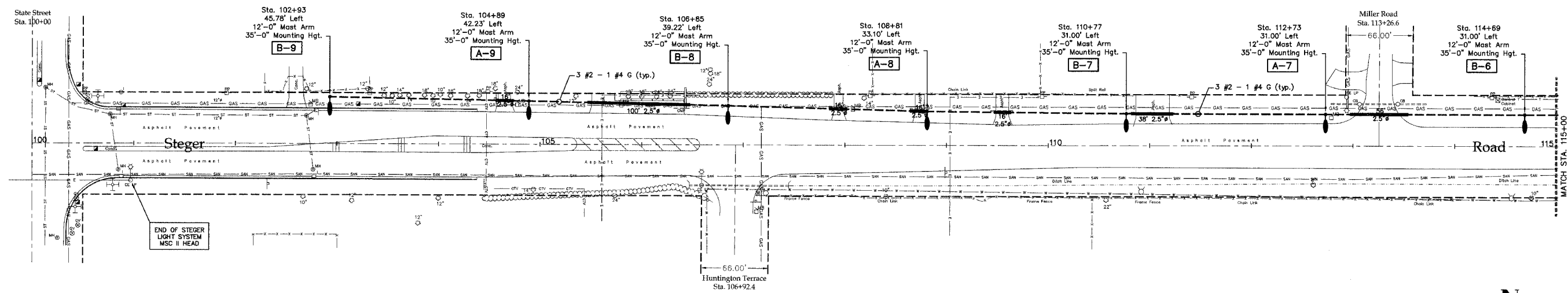
ILLINOIS DEPARTMENT OF TRANSPORTATION

Circuit Wiring Diagram

SCALE: AS SHOWN DRAWN BY: A.A.D.
 DATE: 2-15-07 CHECKED BY: S.M.H.

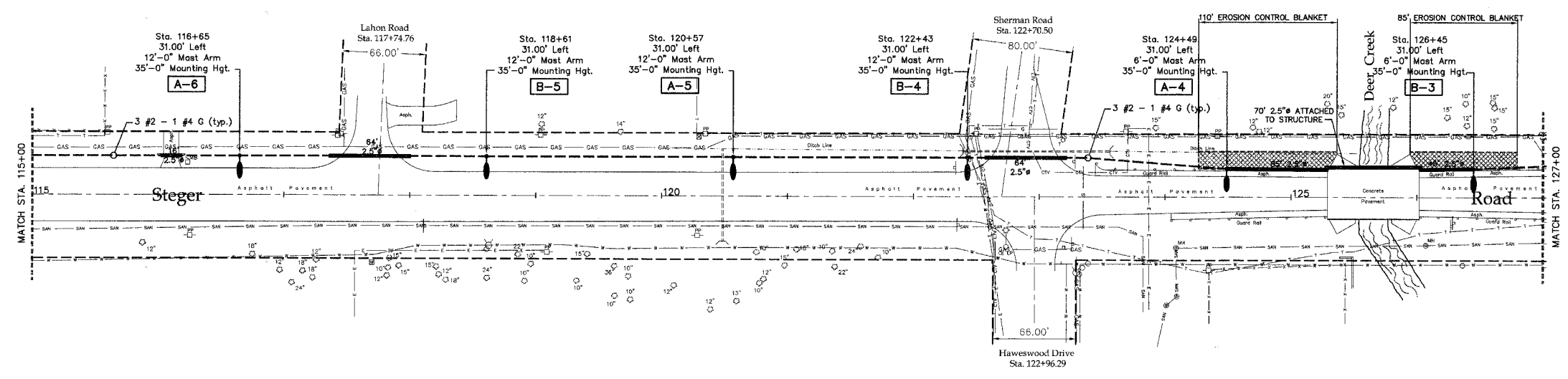
COPYRIGHT © 2006
 JOSEPH A. SCHUDT & ASSOCIATES
 ALL RIGHTS RESERVED

REL.	CITY SECTION	COUNTY	TOTAL SHEETS	SHEET NO.
C-12	06-00082-00-LT	COOK	9	7
STA. 100+00.00		TO STA. 127+00.00		
FED. RD. DIST. NO.	ILLINOIS	PROJECT-NO-0003 (754)		
CONTRACT #83886				



LEGEND

	EXISTING MANHOLE
	EXISTING INLET
	EXISTING CATCHBASIN
	EXISTING CULVERT
	EXISTING HEADWALL
	EXISTING FENCE
	EXISTING TREE W/CALIPER SIZE
	EXISTING GUARD RAIL
	EXISTING TRAFFIC SIGNAL
	EXISTING TRAFFIC SIGNAL HANDHOLE
	EXISTING GAS VALVE
	EXISTING WATER VAULT
	EXISTING WATER BOX
	EXISTING BUFFALO BOX
	EXISTING HYDRANT
	EXISTING TRAFFIC SIGN
	EXISTING LIGHT POLE (COM ED)
	EXISTING POWER POLE
	EXISTING MAIL BOX
	EXISTING TELEPHONE PEDESTAL
	PROPOSED LIGHT POLE 250W HPS
	PROPOSED LIGHTING UNIDUCT
	PROPOSED LIGHTING CONDUIT
	PROPOSED LIGHTING CONTROLLER



Joseph A. Schudt & Associates

 19350 S. HARLEM AVENUE FRANKFORT, IL 60423
 PHONE: 708-720-1000 FAX: 708-720-1085
 e-mail: jas@jaseng.com http://www.jaseng.com
 CIVIL ENGINEERING LAND SURVEYING ENVIRONMENTAL LAND PLANNING GPS SERVICES

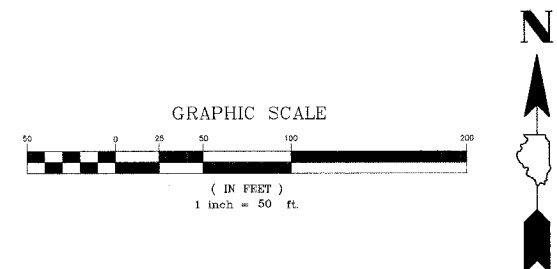
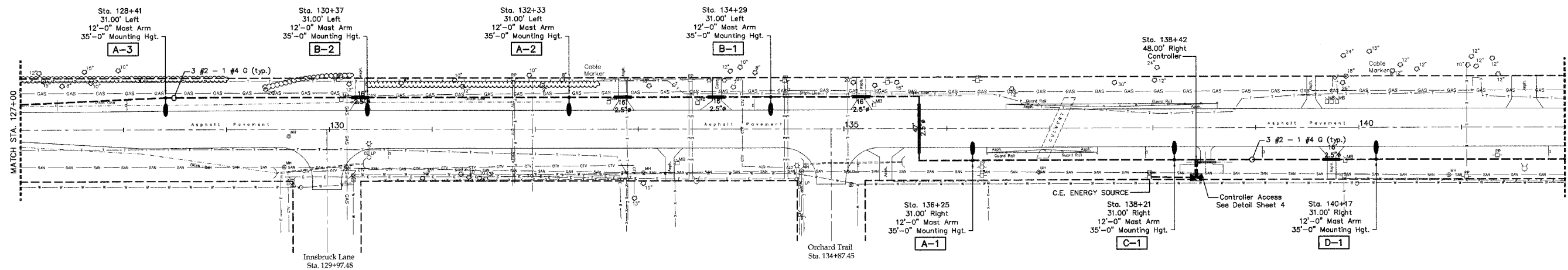
Village of Steger
 Steger Road Lighting Project

REVISIONS	
NAME	DATE

ILLINOIS DEPARTMENT OF TRANSPORTATION
Plan Sheet
Sta. 100+00 to 127+00
 SCALE: AS SHOWN DRAWN BY: A.A.D.
 DATE: 2-15-07 CHECKED BY: S.M.H.

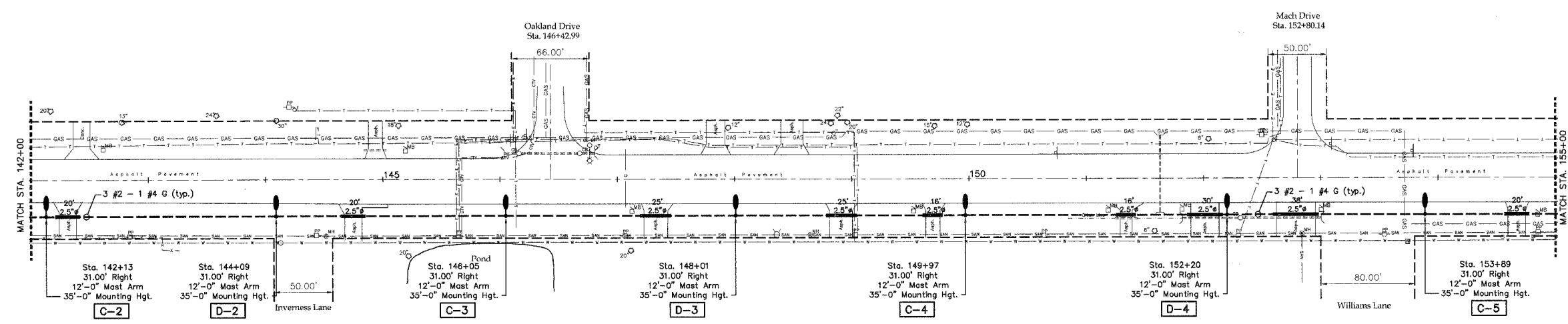
COPYRIGHT © 2006
 JOSEPH A. SCHUDT & ASSOCIATES
 ALL RIGHTS RESERVED

FILE	CITY SECTION	COUNTY	TOTAL SHEETS	SHEET NO.
C-12	06-00062-00-LT	COOK	9	8
STA. 127+00.00		TO STA. 155+00.00		
FED. PROJ. DIST. NO.	ILLINOIS PROJECT-	140-8005 (750)		
CONTRACT #83886				



LEGEND

- ⊕ EXISTING MANHOLE
- EXISTING INLET
- EXISTING CATCHBASIN
- === EXISTING CULVERT
-) EXISTING HEADWALL
- - - EXISTING FENCE
- 12" ○ EXISTING TREE W/CALIPER SIZE
- |— EXISTING GUARD RAIL
- ⊕ EXISTING TRAFFIC SIGNAL
- ⊕ EXISTING TRAFFIC SIGNAL HANDHOLE
- ⊕ EXISTING GAS VALVE
- ⊕ EXISTING WATER VAULT
- EXISTING WATER BOX
- △ EXISTING BUFFALO BOX
- EXISTING HYDRANT
- EXISTING TRAFFIC SIGN
- EXISTING LIGHT POLE (COM ED)
- EXISTING POWER POLE
- EXISTING MAIL BOX
- EXISTING TELEPHONE PEDESTAL
- PROPOSED LIGHT POLE 250W HPS
- — — PROPOSED LIGHTING UNIDUCT
- — — PROPOSED LIGHTING CONDUIT
- ⊕ PROPOSED LIGHTING CONTROLLER



Joseph A. Schudt & Associates
 19350 S. HARLEM AVENUE FRANKFORT, IL 60423
 PHONE: 708-720-1000 FAX: 708-720-1065
 e-mail: jae@joseng.com http://www.joseng.com
 CIVIL ENGINEERING LAND SURVEYING ENVIRONMENTAL LAND PLANNING GPS SERVICES

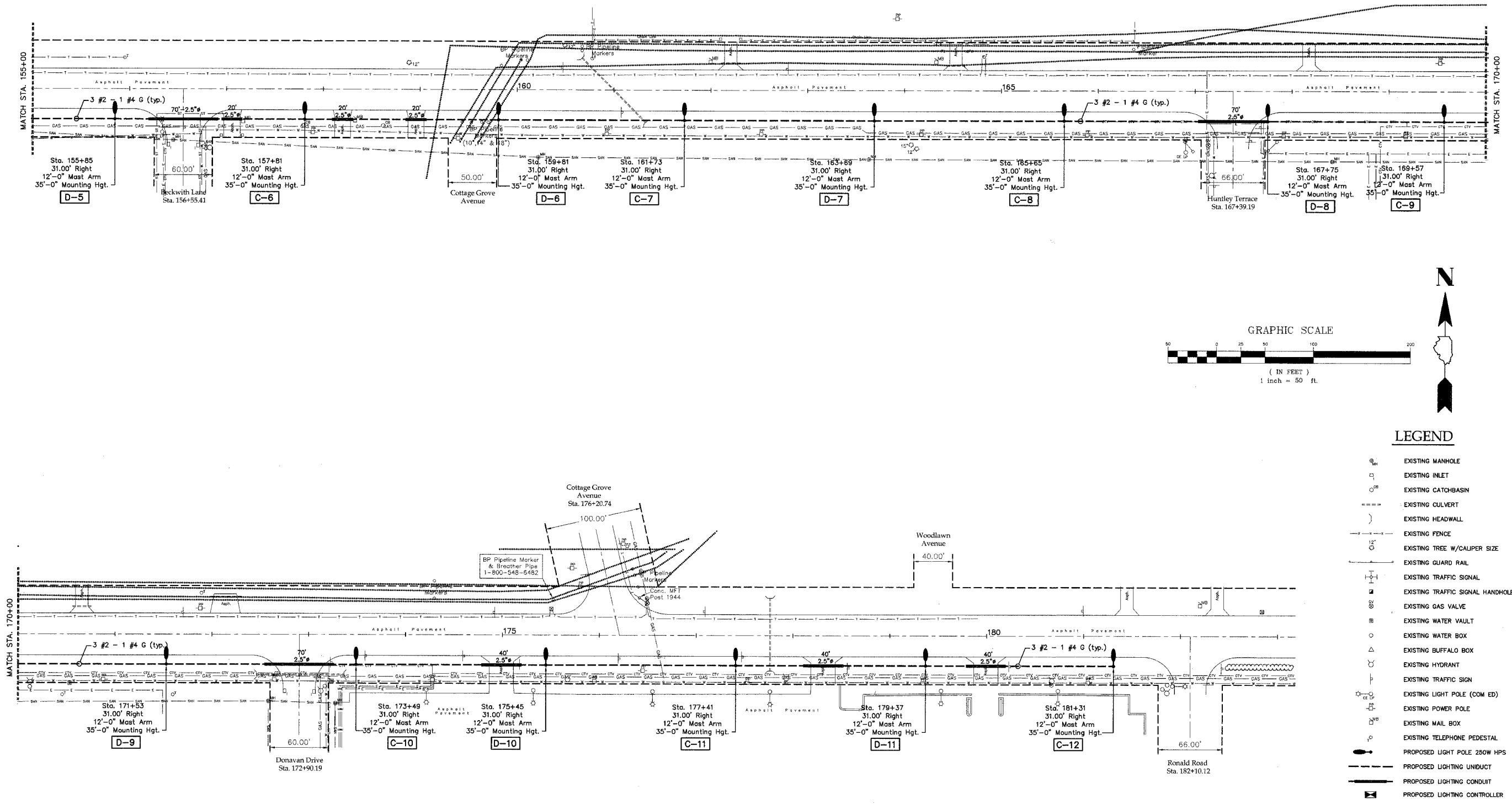
**Village of Steger
 Steger Road Lighting Project**

REVISIONS	
NAME	DATE

ILLINOIS DEPARTMENT OF TRANSPORTATION
**Plan Sheet
 Sta. 127+00 to 155+00**

SCALE: AS SHOWN DRAWN BY: A.A.D.
 DATE: 2-15-07 CHECKED BY: S.M.H.

FILE	CITY SECTION	COUNTY	TOTAL SHEETS	SHEET NO.
C-12	06-00082-00-LT	COOK	9	9
STA. 155+00.00		TO STA. 182+10.12		
FILE NO. SHEET NO.	ALIGNED	PROJECT-	NO-8000 (734)	
CONTRACT #83886				



LEGEND

- EXISTING MANHOLE
- EXISTING INLET
- EXISTING CATCHBASIN
- EXISTING CULVERT
- EXISTING HEADWALL
- EXISTING FENCE
- EXISTING TREE W/ CALIPER SIZE
- EXISTING GUARD RAIL
- EXISTING TRAFFIC SIGNAL
- EXISTING TRAFFIC SIGNAL HANDHOLE
- EXISTING GAS VALVE
- EXISTING WATER VAULT
- EXISTING WATER BOX
- EXISTING BUFFALO BOX
- EXISTING HYDRANT
- EXISTING TRAFFIC SIGN
- EXISTING LIGHT POLE (COM ED)
- EXISTING POWER POLE
- EXISTING MAIL BOX
- EXISTING TELEPHONE PEDESTAL
- PROPOSED LIGHT POLE 250W HPS
- PROPOSED LIGHTING UNDUCT
- PROPOSED LIGHTING CONDUIT
- PROPOSED LIGHTING CONTROLLER

Joseph A. Schudt & Associates

 19350 S. HARLEM AVENUE FRANKFORT, IL 60423
 PHONE: 708-720-1000 FAX: 708-720-1065
 e-mail: jas@jaseng.com http://www.jaseng.com
 CIVIL ENGINEERING LAND SURVEYING ENVIRONMENTAL LAND PLANNING GPS SERVICES

Village of Steger
 Steger Road Lighting Project

REVISIONS	
NAME	DATE

ILLINOIS DEPARTMENT OF TRANSPORTATION

Plan Sheet
 Sta. 155+00 to 182+10.12

SCALE: AS SHOWN DRAWN BY: A.A.D.
 DATE: 2-15-07 CHECKED BY: S.M.H.

COPYRIGHT © 2006
 JOSEPH A. SCHUDT & ASSOCIATES
 ALL RIGHTS RESERVED