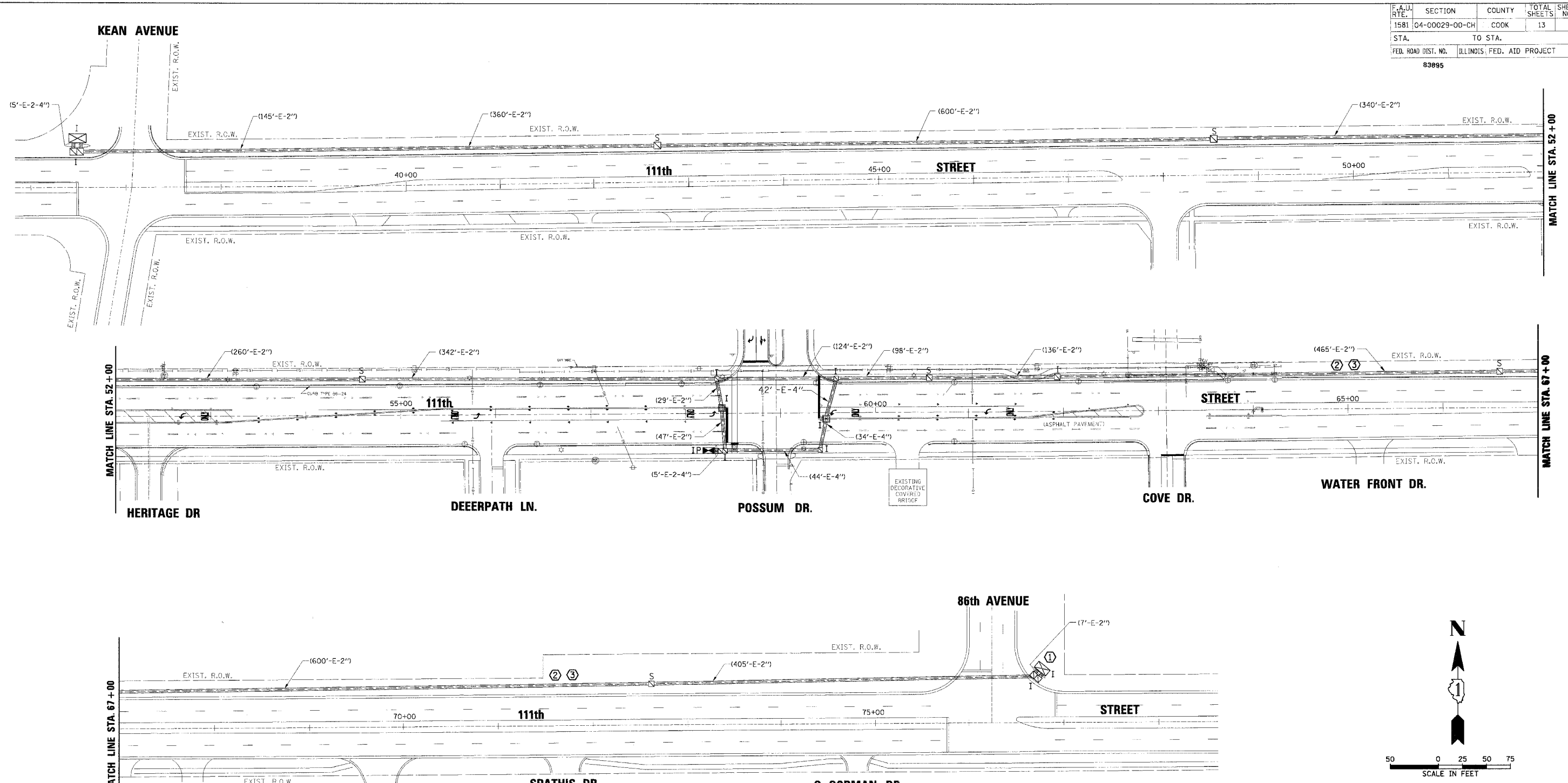


F.A.U. RTE.	SECTION	COUNTY	TOTAL SHEETS	SHEET NO.
1581	04-00029-00-CH	COOK	13	5
STA.		TO STA.		
FED. ROAD DIST. NO.		ILLINOIS FED. AID PROJECT		
83895				



DATE	BY	SURVEYED	PLAN
			NOTE BOOK
DATE	BY	SURVEYED	PROFILE
			NOTE BOOK

CHRISTOPHER B. BURKE ENGINEERING LTD.  
 8575 West Higgins Road, Suite 600  
 Palos Hills, Illinois 60018  
 (847) 822-0500

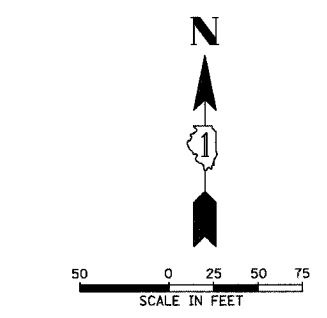
DATE
 BY | SURVEYED | PLAN || DATE | BY | SURVEYED | PROFILE |

- CONSTRUCTION NOTES:
- THE EXISTING INTERCONNECT CABLE SHALL BE DISCONNECTED FROM THE EXISTING 86th AVENUE CONTROLLER AND CABINET.
  - PULL EXISTING INTERCONNECT AND TRACER CABLE FROM EXISTING CONDUITS. RE-INSTALL IN THE PROPOSED CONDUIT AND CONNECT TO THE PROPOSED CONTROLLER AND CABINET AT COLLEGE PARKWAY/POSSUM DRIVE.
  - INSTALL NEW FIBER OPTIC AND TRACER CABLES IN EXISTING AND PROPOSED CONDUIT FROM THE EXISTING 86th AVENUE CONTROLLER CABINET TO THE PROPOSED CONTROLLER AND CABINET AT COLLEGE PARKWAY/POSSUM DRIVE.
  - THE THERMOPLASTIC PAVEMENT MARKING LINE, 24 INCH FOR THE STOP BARS ON 111th STREET SHALL NOT BE INSTALLED UNTIL TRAFFIC SIGNAL IS OPERATIONAL.

INTERCONNECT PLAN LEGEND

	PROPOSED	EXISTING
CONTROLLER	[Symbol]	[Symbol]
HANDHOLE	[Symbol]	[Symbol]
DOUBLE HANDHOLE	[Symbol]	[Symbol]
HEAVY-DUTY HANDHOLE	[Symbol]	[Symbol]
G.S. CONDUIT IN TRENCH (T) OR PUSHED (P)	[Symbol]	[Symbol]
DETECTOR LOOP	[Symbol]	[Symbol]
SYSTEM	S	I
INTERSECTION	IP	I
UNIT DUCT	UD	
COMMON TRENCH	CT	

REVISIONS	
NAME	DATE



ILLINOIS DEPARTMENT OF TRANSPORTATION

**INTERCONNECT PLAN**

111th STREET  
 PALOS HILLS, ILLINOIS

SCALE: 1" = 50'  
 DATE: 2/16/2007

DRAWN BY: FCP/FPB  
 DESIGNED BY: WCE  
 CHECKED BY: GMZ