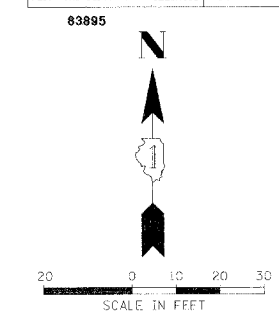


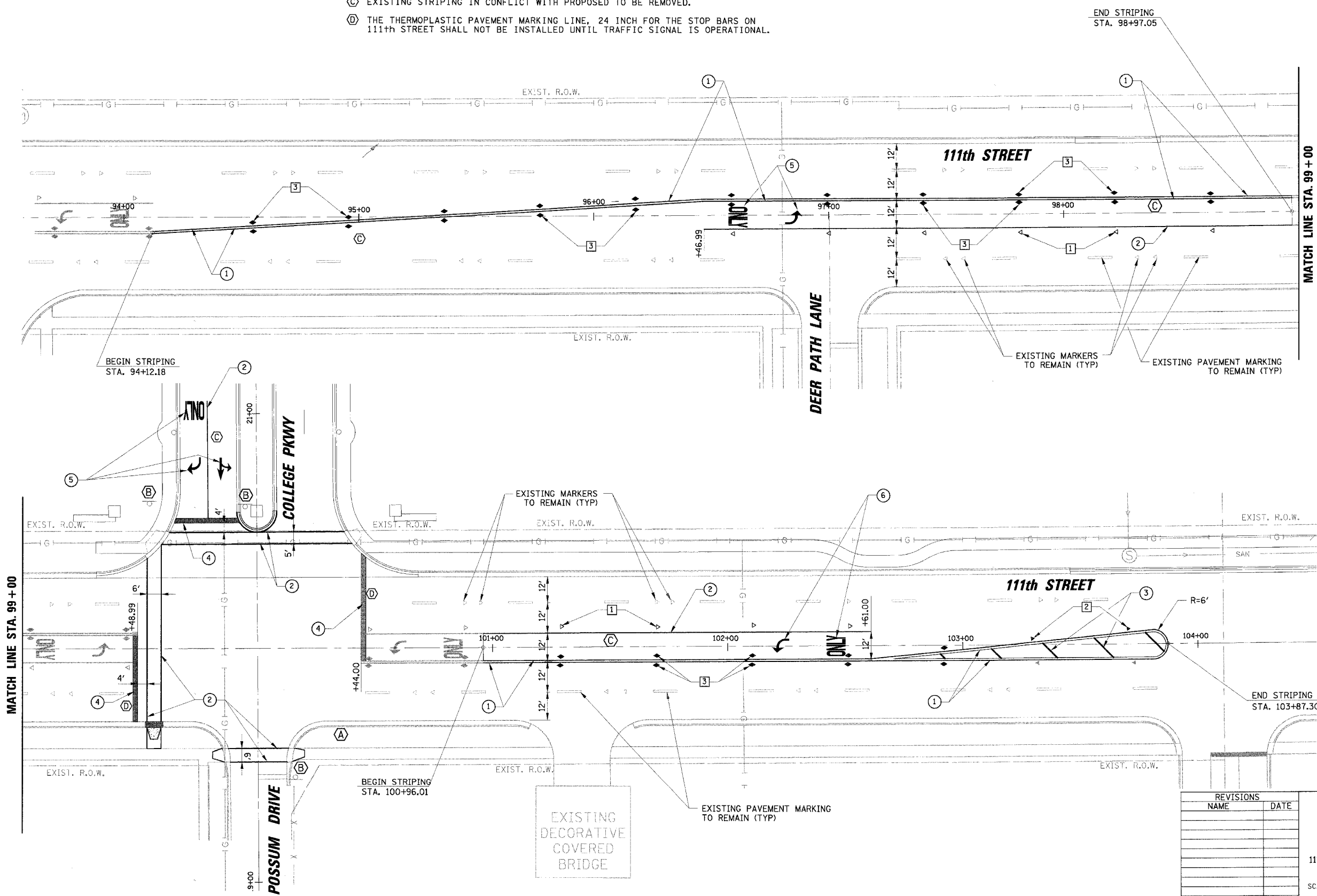
F.A.U. RTE.	SECTION	COUNTY	TOTAL SHEETS	SHEET NO.
1581	04-00029-00-CH	COOK	13	7
STA.		TO STA.		
FED. ROAD DIST. NO.		ILLINOIS FED. AID PROJECT		



- CONSTRUCTION NOTES:
- (A) EXISTING INTERSECTION WARNING SIGN (W2-2) AND 88th AVENUE PLACARD TO BE REMOVED.
 - (B) EXISTING STOP SIGNS TO BE REMOVED AFTER TRAFFIC SIGNAL IS OPERATIONAL.
 - (C) EXISTING STRIPING IN CONFLICT WITH PROPOSED TO BE REMOVED.
 - (D) THE THERMOPLASTIC PAVEMENT MARKING LINE, 24 INCH FOR THE STOP BARS ON 111th STREET SHALL NOT BE INSTALLED UNTIL TRAFFIC SIGNAL IS OPERATIONAL.

DATE	BY	REVISIONS
DATE	BY	REVISIONS

CHRISTOPHER B. BURKE ENGINEERING LTD.
 9875 West Hickory Road, Suite 500
 Rosemont, Illinois 60018
 (847) 823-0500



- PAVEMENT MARKING LEGEND
- ① 4" YELLOW DOUBLE SOLID, 11" C-C
 - ② 6" WHITE SOLID
 - ③ 12" YELLOW DIAGONALS SOLID, 25' C-C
 - ④ 24" WHITE SOLID - STOP BAR
 - ⑤ LETTERS AND SYMBOLS - WHITE
 - ① ONE-WAY CRYSTAL MARKER AT 40' CENTERS
 - ② ONE-WAY AMBER MARKER AT 40' CENTERS
 - ③ TWO-WAY AMBER MARKER AT 40' CENTERS
 - EXISTING ONE-WAY AMBER MARKER TO REMAIN
 - EXISTING TWO-WAY AMBER MARKER TO REMAIN
 - EXISTING ONE-WAY CRYSTAL MARKER TO REMAIN

REVISIONS	
NAME	DATE

ILLINOIS DEPARTMENT OF TRANSPORTATION

PAVEMENT MARKING PLAN

111th STREET AND COLLEGE PKWY / POSSUM DRIVE
 PALOS HILLS, ILLINOIS

SCALE: 1" = 20'

DATE: 2/16/2007

DRAWN BY: FCP/FPB
 DESIGNED BY: WCE
 CHECKED BY: GMZ