

F.A.A. RTE.	SECTION	COUNTY	TOTAL SHEETS	SHEET NO.
---	06-00061-00-SW	COOK	37	1
FED. ROAD DIST. NO. 1 ILLINOIS FED. AID PROJECT				
CONTRACT NO. 83899				

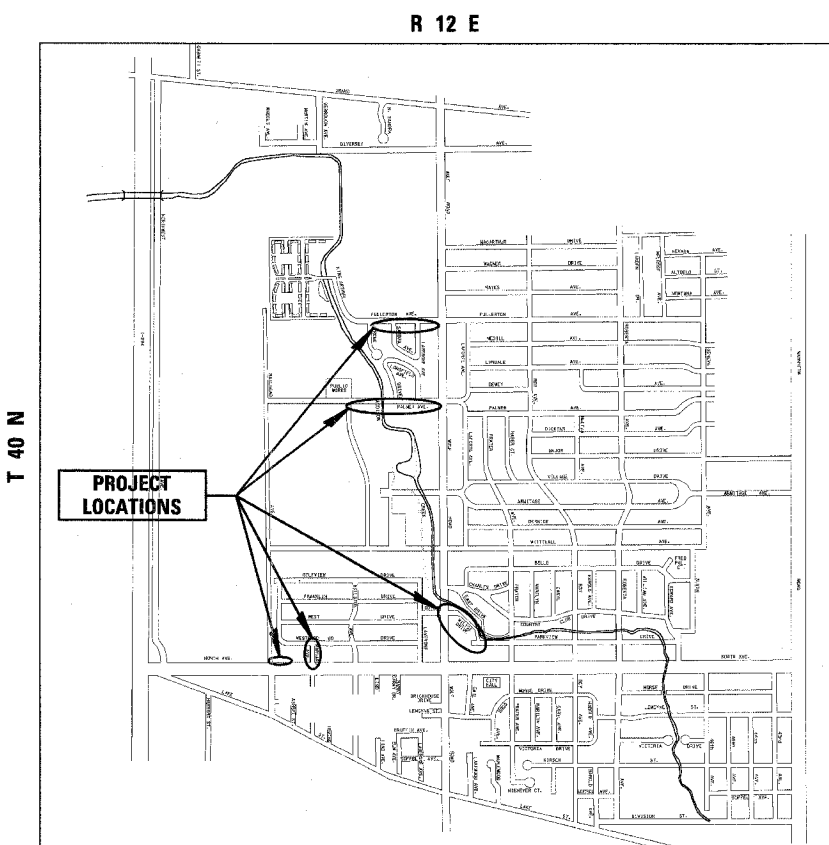
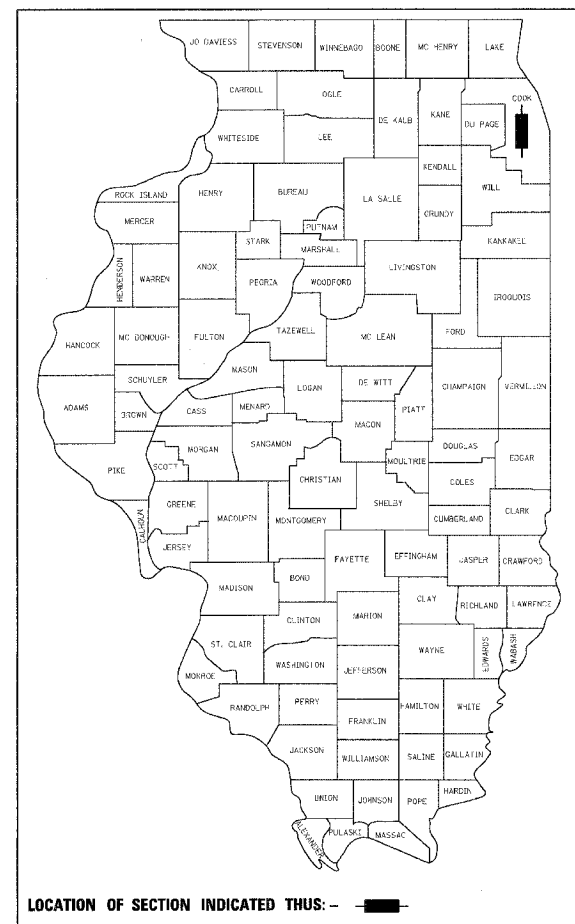
STATE OF ILLINOIS
DEPARTMENT OF TRANSPORTATION
DIVISION OF HIGHWAYS

PLANS FOR PROPOSED FEDERAL AID HIGHWAY

CMAQ SIDEWALK PROJECT
VARIOUS LOCATIONS
Section No.: 06-00061-00-SW
Project No.: CMM-8003(598)
CITY OF NORTHLAKE
COOK COUNTY
JOB NO.: C-91-242-06

INDEX OF SHEETS

SHEET NO.	DESCRIPTION
1	TITLE SHEET
2	GENERAL NOTES AND IDOT STANDARDS
3	SUMMARY OF QUANTITIES
4	EARTHWORK TABLE
5	TYPICAL SECTION
6	ALIGNMENT, TIES AND BENCHMARKS - FULLERTON AVENUE
7	ALIGNMENT, TIES AND BENCHMARKS - PALMER AVENUE
8	ALIGNMENT, TIES AND BENCHMARKS - HARVARD AVENUE AND NORTH AVENUE
9	ALIGNMENT, TIES AND BENCHMARKS - WILTSE DRIVE
10	EXISTING CONDITIONS AND REMOVAL PLAN - FULLERTON AVENUE
11	EXISTING CONDITIONS AND REMOVAL PLAN - PALMER AVENUE
12	EXISTING CONDITIONS AND REMOVAL PLAN - HARVARD AVENUE AND NORTH AVENUE
13	EXISTING CONDITIONS AND REMOVAL PLAN - WILTSE DRIVE
14	PROPOSED IMPROVEMENTS - FULLERTON AVENUE
15	PROPOSED IMPROVEMENTS - PALMER AVENUE
16	PROPOSED IMPROVEMENTS - HARVARD AVENUE AND NORTH AVENUE
17	PROPOSED IMPROVEMENTS - WILTSE DRIVE
18	CONSTRUCTION DETAILS
19	CURB OR CURB AND GUTTER REMOVAL AND REPLACEMENT
20	DISTRICT ONE TYPICAL PAVEMENT MARKINGS
21	TRAFFIC CONTROL AND PROTECTION FOR SIDE ROADS, INTERSECTIONS, AND DRIVEWAYS
22-25	CROSS SECTIONS - FULLERTON AVENUE
26-30	CROSS SECTIONS - PALMER AVENUE
31-32	CROSS SECTIONS - HARVARD AVENUE
33	CROSS SECTIONS - NORTH AVENUE
34-37	CROSS SECTIONS - WILTSE DRIVE



LOCATION MAP
N.T.S.

GROSS LENGTH OF PROJECT = 3506 LINEAL FEET
NET LENGTH OF PROJECT = 3506 LINEAL FEET

TRAFFIC DATA
ADT (YEAR) = N / A
SPEED LIMIT = 25 MPH & VARIES

STATE OF ILLINOIS
DEPARTMENT OF TRANSPORTATION
DIVISION OF HIGHWAYS

APPROVED 1-3 2007
[Signature] MAYOR
CITY OF NORTHLAKE

PASSED FEBRUARY 22 2007
[Signature] DISTRICT ENGINEER OF LOCAL ROADS AND STREETS

RELEASING FOR
BID BASED ON
LIMITED REVIEW February 22 2007

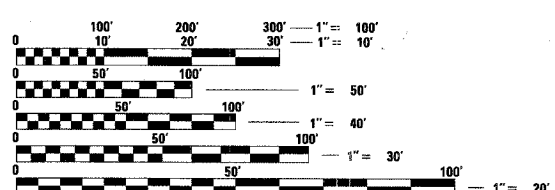
[Signature]
DEPUTY DIRECTOR OF HIGHWAYS
REGION ONE ENGINEER



1/3, 2007
[Signature]
JASON G. SOUDEN
ILLINOIS REGISTRATION NO. 062-050850 ENGINEER
EXPIRATION DATE: 11/30/07
PRINTED BY AUTHORITY OF THE STATE OF ILLINOIS

CB CHRISTOPHER B. BURKE ENGINEERING LTD.
9575 West Higgins Road, Suite 600
Rosemont, Illinois 60018
(847) 823-0500

FEDERAL AID DESIGN ENGINEER: CHAD RIDDLE
201 W. CENTER COURT
SCHALMURG, ILLINOIS 60196-1096
(847) 705-4406



FULL SIZE PLANS HAVE BEEN PREPARED USING STANDARD ENGINEERING SCALES. REDUCED SIZED PLANS WILL NOT CONFORM TO STANDARD SCALES. IN MAKING MEASUREMENTS ON REDUCED PLANS, THE ABOVE SCALES MAY BE USED.

J.U.L.I.E.
JOINT UTILITY LOCATION INFORMATION FOR EXCAVATION
1-800-892-0123

CONTRACT NO. 83899