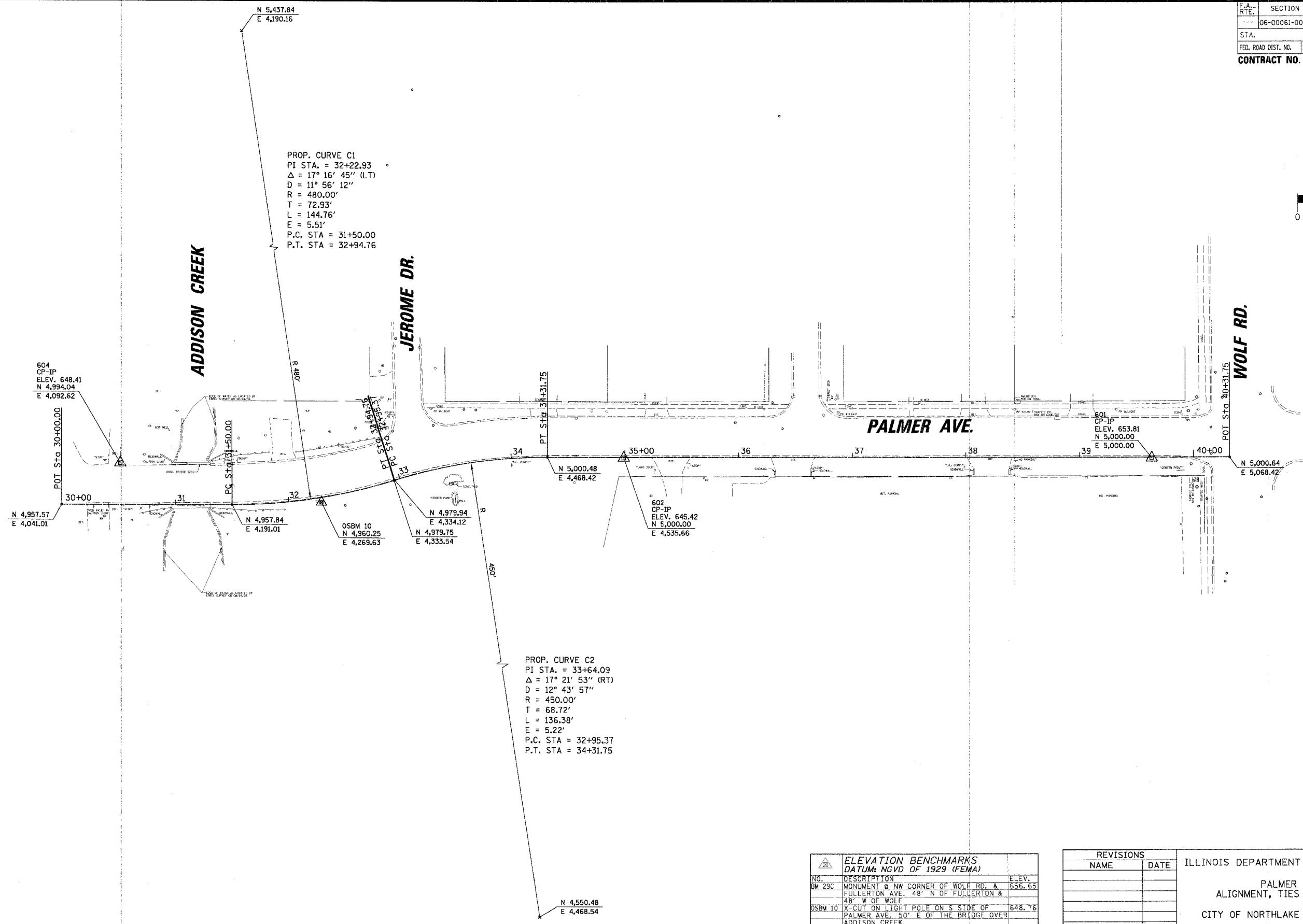
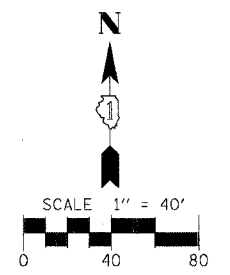


REVISIONS
 NO. DATE BY
 1
 2
 3
 4
 5
 6
 7
 8
 9
 10
 11
 12
 13
 14
 15
 16
 17
 18
 19
 20
 21
 22
 23
 24
 25
 26
 27
 28
 29
 30
 31
 32
 33
 34
 35
 36
 37
 38
 39
 40
 41
 42
 43
 44
 45
 46
 47
 48
 49
 50
 51
 52
 53
 54
 55
 56
 57
 58
 59
 60
 61
 62
 63
 64
 65
 66
 67
 68
 69
 70
 71
 72
 73
 74
 75
 76
 77
 78
 79
 80
 81
 82
 83
 84
 85
 86
 87
 88
 89
 90
 91
 92
 93
 94
 95
 96
 97
 98
 99
 100

CHRISTOPHER B. BURKE
 ENGINEERING LTD.
 9575 West Higgins Road, Suite 600
 Rosemont, Illinois 60018
 (847) 823-0500

PROFILE
 NO. DATE BY
 1
 2
 3
 4
 5
 6
 7
 8
 9
 10
 11
 12
 13
 14
 15
 16
 17
 18
 19
 20
 21
 22
 23
 24
 25
 26
 27
 28
 29
 30
 31
 32
 33
 34
 35
 36
 37
 38
 39
 40
 41
 42
 43
 44
 45
 46
 47
 48
 49
 50
 51
 52
 53
 54
 55
 56
 57
 58
 59
 60
 61
 62
 63
 64
 65
 66
 67
 68
 69
 70
 71
 72
 73
 74
 75
 76
 77
 78
 79
 80
 81
 82
 83
 84
 85
 86
 87
 88
 89
 90
 91
 92
 93
 94
 95
 96
 97
 98
 99
 100

F.A. RTE.	SECTION	COUNTY	TOTAL SHEETS	SHEET NO.
---	06-00061-00-SW	COOK	37	7
STA.	TO STA.			
FED. ROAD DIST. NO.	ILLINOIS	FED. AID PROJECT		
CONTRACT NO. 83899				



PROP. CURVE C1
 PI STA. = 32+22.93
 $\Delta = 17^\circ 16' 45''$ (LT)
 $D = 11^\circ 56' 12''$
 $R = 480.00'$
 $T = 72.93'$
 $L = 144.76'$
 $E = 5.51'$
 P.C. STA = 31+50.00
 P.T. STA = 32+94.76

PROP. CURVE C2
 PI STA. = 33+64.09
 $\Delta = 17^\circ 21' 53''$ (RT)
 $D = 12^\circ 43' 57''$
 $R = 450.00'$
 $T = 68.72'$
 $L = 136.38'$
 $E = 5.22'$
 P.C. STA = 32+95.37
 P.T. STA = 34+31.75

ELEVATION BENCHMARKS DATUM: NGVD OF 1929 (FEMA)		
NO.	DESCRIPTION	ELEV.
BM 29C	MONUMENT @ NW CORNER OF WOLF RD. & FULLERTON AVE. 48' N OF FULLERTON & 48' W OF WOLF	656.65
OSBM 10	X-CUT ON LIGHT POLE ON S SIDE OF PALMER AVE, 50' E OF THE BRIDGE OVER ADDISON CREEK	648.76

REVISIONS	
NAME	DATE

ILLINOIS DEPARTMENT OF TRANSPORTATION
 PALMER AVENUE
 ALIGNMENT, TIES AND BENCHMARK
 CITY OF NORTHLAKE - CMAQ SIDEWALKS
 SCALE 1" = 40'
 DATE 12/26/2006
 DRAWN BY AMP
 CHECKED BY MW