

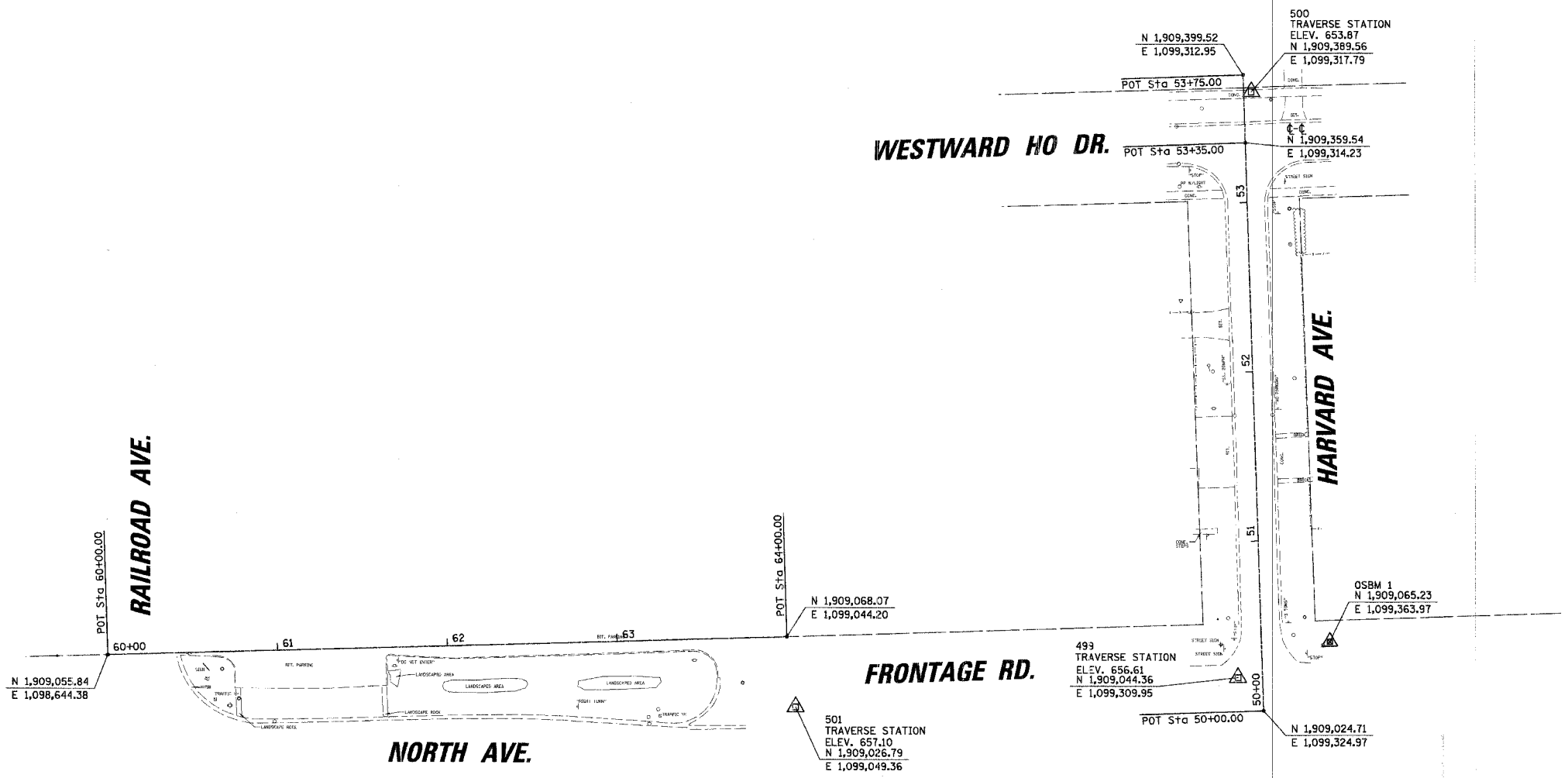
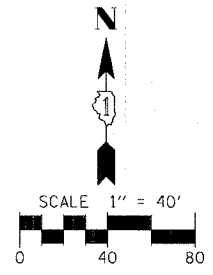
DATE: _____ BY: _____
 CHECKED BY: _____
 DATE: _____ BY: _____
 CHECKED BY: _____

CHRISTOPHER B. BURKE ENGINEERING LTD.
 9575 West Higgins Road, Suite 600
 Rosemont, Illinois 60018
 (847) 823-0500

PROF. FILE: _____ DATE: _____
 BY: _____
 CHECKED BY: _____
 DATE: _____
 BY: _____

F.A. RTE.	SECTION	COUNTY	TOTAL SHEETS	SHEET NO.
---	06-00061-00-SW	COOK	37	8
STA.	TO STA.			
FED. ROAD DIST. NO.	ILLINOIS	FED. AID PROJECT		

CONTRACT NO. 83899



ELEVATION BENCHMARKS DATUM: NGVD OF 1929		
NO.	DESCRIPTION	ELEV.
OSBM 2	SQUARE CUT ON CONC. BASE OF LIGHT POLE @ SE SIDE OF WALGREENS PARKING LOT ON SE CORNER OF NORTH AV. & WOLF RD. (FROM REF. JOB #9432DC58)	646.50
OSBM 1	ARROW BOLT ON FIRE HYDRANT @ SE CORNER OF NORTH AV. & HARVARD AV.	657.29

REVISIONS	
NAME	DATE

ILLINOIS DEPARTMENT OF TRANSPORTATION
 HARVARD AVENUE, NORTH AVENUE
 ALIGNMENT, TIES AND BENCHMARK
 CITY OF NORTHLAKE - CMAQ SIDEWALKS
 SCALE 1" = 40'
 DATE 12/26/2006
 DRAWN BY AMP
 CHECKED BY MW