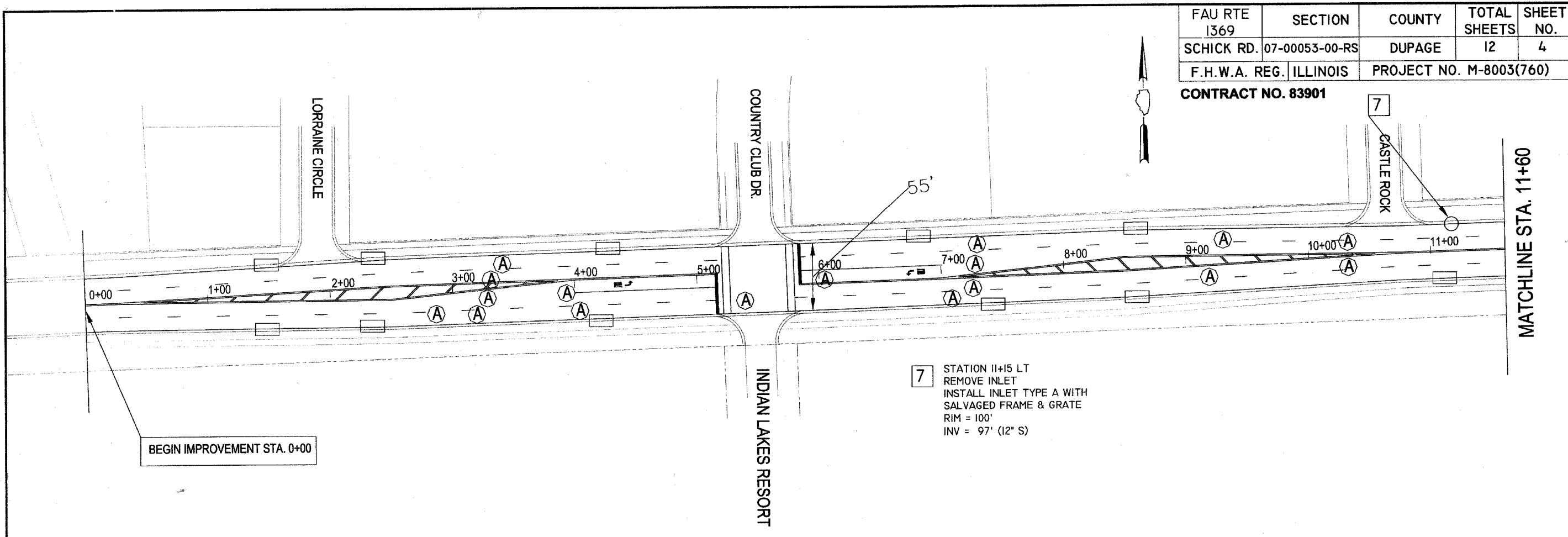


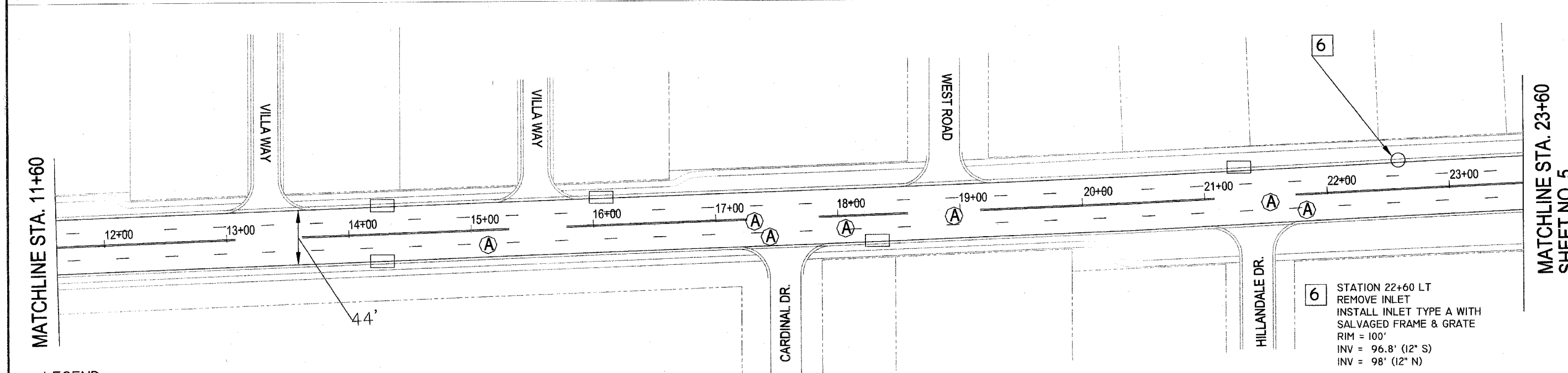
|                    |                |                         |              |           |
|--------------------|----------------|-------------------------|--------------|-----------|
| FAU RTE<br>1369    | SECTION        | COUNTY                  | TOTAL SHEETS | SHEET NO. |
| SCHICK RD.         | 07-00053-00-RS | DUPAGE                  | 12           | 4         |
| F.H.W.A. REG.      | ILLINOIS       | PROJECT NO. M-8003(760) |              |           |
| CONTRACT NO. 83901 |                |                         |              |           |



BEGIN IMPROVEMENT STA. 0+00

7 STATION 11+15 LT  
REMOVE INLET  
INSTALL INLET TYPE A WITH  
SALVAGED FRAME & GRATE  
RIM = 100'  
INV = 97' (12" S)

MATCHLINE STA. 11+60



MATCHLINE STA. 11+60

6 STATION 22+60 LT  
REMOVE INLET  
INSTALL INLET TYPE A WITH  
SALVAGED FRAME & GRATE  
RIM = 100'  
INV = 96.8' (12" S)  
INV = 98' (12" N)

MATCHLINE STA. 23+60  
SHEET NO. 5

- LEGEND
- = INLETS TO BE ADJUSTED
  - = INLETS, TYPE A, SALVAGED FRAME & GRATE
  - ◊ = INLETS, TYPE A, TYPE B.24 FRAME & GRATE
  - ▽ = VALVE VAULTS, 4' DIAMETER WITH SALVAGED FRAME & GRATE
  - Ⓐ = FRAME & LID TO BE ADJUSTED

PREPARED BY: **VILLAGE OF BLOOMINGDALE**  
201 S. BLOOMINGDALE RD.  
BLOOMINGDALE ILLINOIS 60108  
(630) 893-7073

PROJECT NAME: **2007 LAPP PROJECT**  
**SCHICK ROAD - BLOOMINGDALE to LORRAINE CIRCLE**

DATE: 11-6-06  
SCALE: 1" = 40'  
DRAWN BY: B.P.S.  
APPROVED BY:

| REVISIONS |    |
|-----------|----|
| 1.        | 4. |
| 2.        | 5. |
| 3.        | 6. |

SHEET NO.  
**04**  
**12**