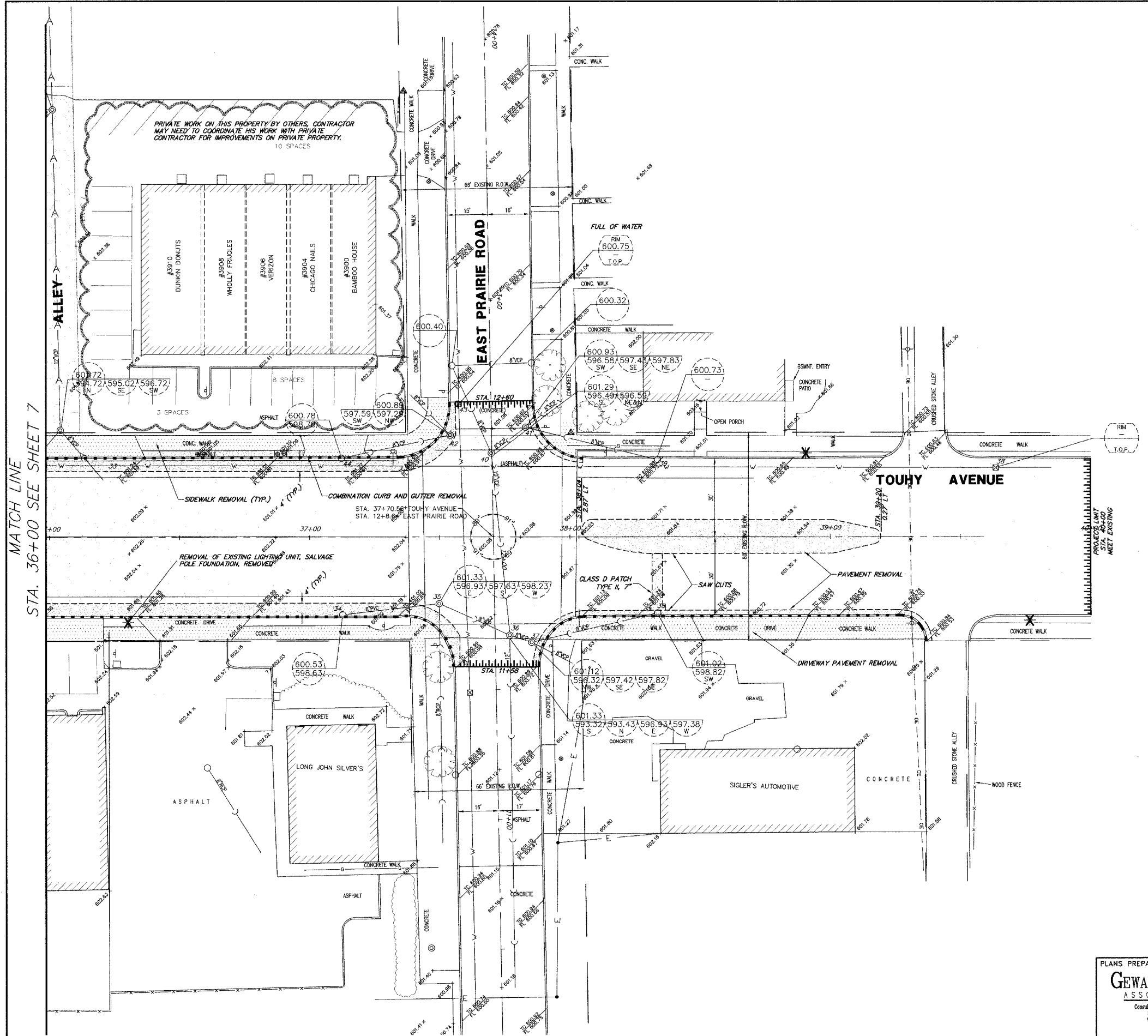
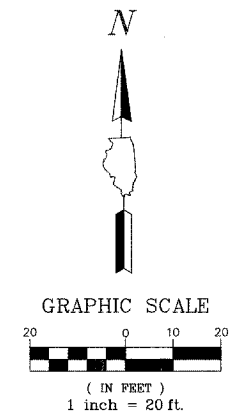


F.A.P. R.T.E.	SECTION	COUNTY	TOTAL SHEETS	SHEET NO.
1340	06-00048-00-RS	COOK	36	8
EXISTING CONDITIONS/ DEMO PLAN				
ILLINOIS				



DEMOLITION LEGEND

- PAVEMENT REMOVAL
- HMA SURFACE REMOVAL, COLD MILLING, 2-1/2" (TOUHY AVE.)
- HMA SURFACE REMOVAL, COLD MILLING, 3-1/2" (PUBLIC ALLEYS)
- SIDEWALK REMOVAL
- DRIVEWAY PAVEMENT REMOVAL
- CLASS D PATCHES 7"
- COMBINATION CURB & GUTTER REMOVAL
- STORM SEWER REMOVAL, 12"
- BUTT JOINT
- SAW CUTS
- REMOVING MANHOLES
- REMOVING INLETS
- REMOVAL OF EXISTING LIGHTING UNIT, SALVAGE POLE FOUNDATION, REMOVED

MATCH LINE
STA. 36+00 SEE SHEET 7

PLANS PREPARED BY:
GEWALT HAMILTON
ASSOCIATES, INC.
Consulting Engineers & Surveyors
850 Forest Edge Drive
Vernon Hills, IL 60061
(847) 476-9700
(847) 476-9700 Fax

REVISIONS	
NAME	DATE

ILLINOIS DEPARTMENT OF TRANSPORTATION
**EXISTING CONDITIONS/
DEMOLITION PLAN**
BUSINESS DISTRICT IMPROVEMENTS
TOUHY AVE. AND CRAWFORD AVE.
SECTION # 06-00048-00-RS

SCALE: 1" = 20'
DATE: 11-2-06

DRAWN BY: DSM
DESIGNED BY: DSM
CHECKED BY: SDB