

DuraStar™ Series 30
Roadway Lighting System
200-400W HPS, 400W MV/MH

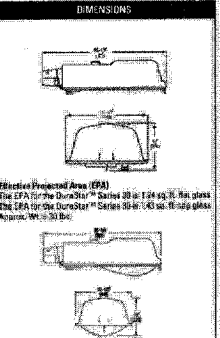
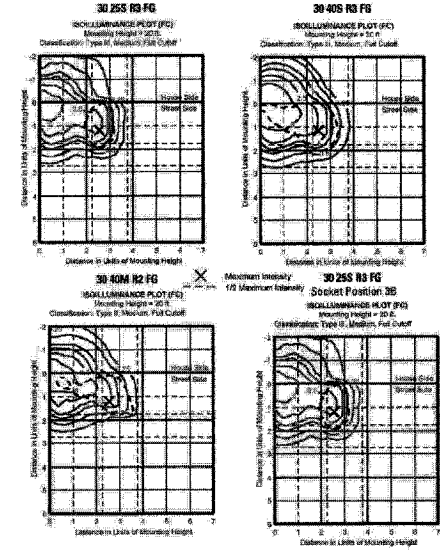
PRODUCT OVERVIEW

Features:
Revolutionary DuraLock™ docking system provides modular installation and interchangeability for easy maintenance. Rugged die-cast, powder-coated docking station mounts securely to mast-arms to ensure secure wiring and long-lasting stability. Durable lightweight lighting fixture positively docks by plugging in with a 20° locking wedge.
High-efficiency optical system maximizes light output while minimizing light-pollution glare.
Star Freedom™ cutoff distribution patterns available.
Starter components externally accessible for easy maintenance and is fully interchangeable for long life.
Wedge-shaped cast into the docking station (not a separate piece) and is easily adjustable for 1-1/4" to 2" (32mm to 51mm) mast arms.
The cast trigger latch on door frame enables easy and secure one-hand opening for re-lamping and maintenance.
Large surface area "breathing slot" gasket seals the optical chamber to prevent intrusion by insects and other unwanted contaminants. Heat-resistant gasket material remains effective over the life of the fixture.
Photocell receptacle is adjustable without tools.
All electrical components warranted by American Electric Lighting's 9-year guarantee.
Suitable for -30°C MH & MV / -40°C HPS
Optical chamber is IP64 rated standard.
Complies with ANSI: C136.2, C136.3, C136.15, C136.31



Applications:

- Roadways
- Residential streets
- Storage areas
- Parking lots
- Compuces
- Parks



DuraStar™ Series 30
Roadway Lighting System
200-400W HPS, 400W MV/MH

ORDERING INFORMATION

Example: 30 25S CA MT1 R3 FG LC PC

Option	Wattage / Source	Ballast	Voltage	Distribution
30 DuraStar Cobalt™	25 300W S HPS 25 250W M MH 31 310W V MV 23 350/400W wired 250V 24 350/400W wired 480V	RN Reactor Normal RH Reactor High NH High Resistance (Lamp Normal) XH High Resistance (Lamp High) DA DMSL CT CWT MR Mag Reg (2 Cell) XX No Ballast	120 120V 208 208V 230 230V 240 240V 277 277V 347 347V 480 480V MT1 Multi-tap wired 120V MT2 Multi-tap wired 240V MT3 Multi-tap wired 277V TTT Tri-tap wired 120V TTD Tri-tap wired 277V ETD Tri-tap wired 347V DT1 Dual Tap 120/240 wired 120V DT2 Dual Tap 120/240 wired 240V DT3 Dual Tap 240/480 wired 240V DT4 Dual Tap 240/480 wired 480V	R2 Roadway Type II R3 Roadway Type III Refer to Optic Distribution Matrix below for compatibility Optics S6 Sag Glass Clear Tempered F6 Flat Glass Clear Tempered

Options
Maximum number of options is six. For more options please contact your local American Electric Lighting representative.

Minuties
MBK Backlock Docking Station set for 1-1/4" mast arm
MZ 2-bolt internal 2" setting for Backlock Docking Station
ML Backlock Docking Station
VT Vertical Tension Docking Station

Color
BR (standard) Bronze
BZ Bronze

USAG
UL UL Listed
CS CSA Certified

Photocell Receptacle
USAG NEMA Photocell Receptacle
MR No Photocell Receptacle
PR Phosphor Bronze Contacts

Lamp
LC Lamp Included, Clear
LD Lamp Included, Darkened/Unshaded
LG Self-lighting Lamp?

Standard
DB Encapsulated Plug-in
OB Open Board Internal
SN No Igniter (using self-lighting lamp)

Misc.
PC Photocell included per Voltage Specified
SS Stainless Steel Fasteners (standard)
PL Distributor Pattern Indicator Label
SN No NEMA Label on Housing
MH No NEMA Label on Housing
SH Starting Cap
LCU Low Copper Alloy Contact
DCU Docking station base than 15kV

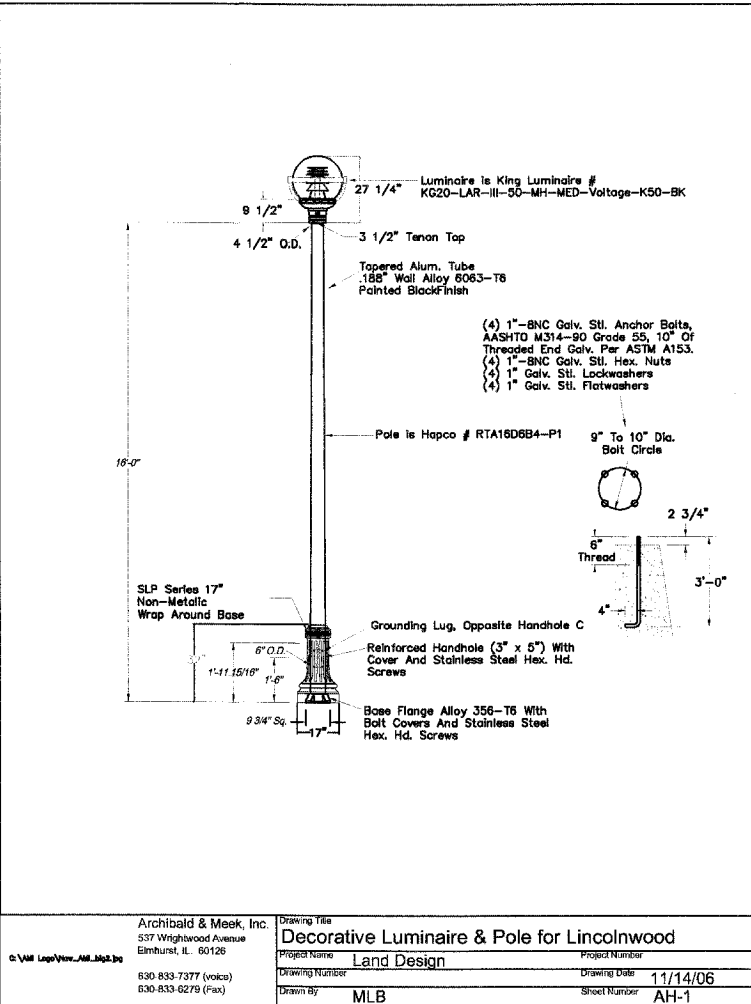
Notes:
1. PB, PC, SH not available with NH option.
2. Requires SA option.
3. Available in HPS only.
4. Externally mounted.
5. Limited availability; please contact your local American Electric Lighting representative.

Optic Distribution

	R2S5	R2S6	R2P6	R3S6
25S	✓	✓	✓	✓
31S	✓	✓	✓	✓
40S	✓	✓	✓	✓
17M	✓	✓	✓	✓
25M	✓	✓	✓	✓
37M	✓	✓	✓	✓
20V	✓	✓	✓	✓
30V	✓	✓	✓	✓

American Electric Lighting
Lighting Group, Inc.
195 Industrial Boulevard, Covington, GA 30029
Phone: 800-545-4444 Fax: 770-885-9888
www.americanelectriclighting.com

© 2004 Acuity Brands Lighting, Inc. 11/04 Director 30-030 Sheet # RW-30



IDOT PAY ITEM #XX006697

IDOT PAY ITEM #X0321766
ALTERNATE BID: SIMILAR TO THE ABOVE
FROM SUN VALLEY: #7-1035T-16FT-PT27/RCGN22-CA-OPT-050MH-MT-PT-BKM
OR APPROVED EQUAL FROM ANOTHER MANUFACTURER.

I:\MSW\06\11\06\0001\Drawings - Unreleased - Street Lighting - State - I.T.S. - Tuesday, February 15, 2007 - 9:46am By: coryphace

KJWW ENGINEERING CONSULTANTS
Experience you can build on.™ PROJECT #R010410

1771 N. D. EHL ROAD, SUITE 300
MAPLEVALE, IL 60063
850.527.2500 FAX: 630.527.0321
www.kjww.com

PLANS PREPARED BY:
GEWALT HAMILTON ASSOCIATES, INC.
Consulting Engineers & Surveyors
208 Forest Edge Drive
Verona Hills, IL 60081
(815) 475-9700
(815) 475-9701 Fax

ILLINOIS DEPARTMENT OF TRANSPORTATION
LIGHTING DETAILS & NOTES
BUSINESS DISTRICT IMPROVEMENTS
TOUHY AVE. AND CRAWFORD AVE.
SECTION # 06 - 00048 - 00 -RS

SCALE: N.T.S.
DATE: 11-2-06

DRAWN BY: JEF
DESIGNED BY: GWN
CHECKED BY: SDE