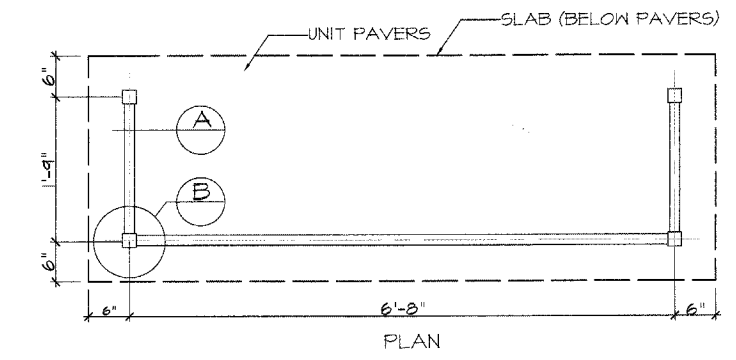
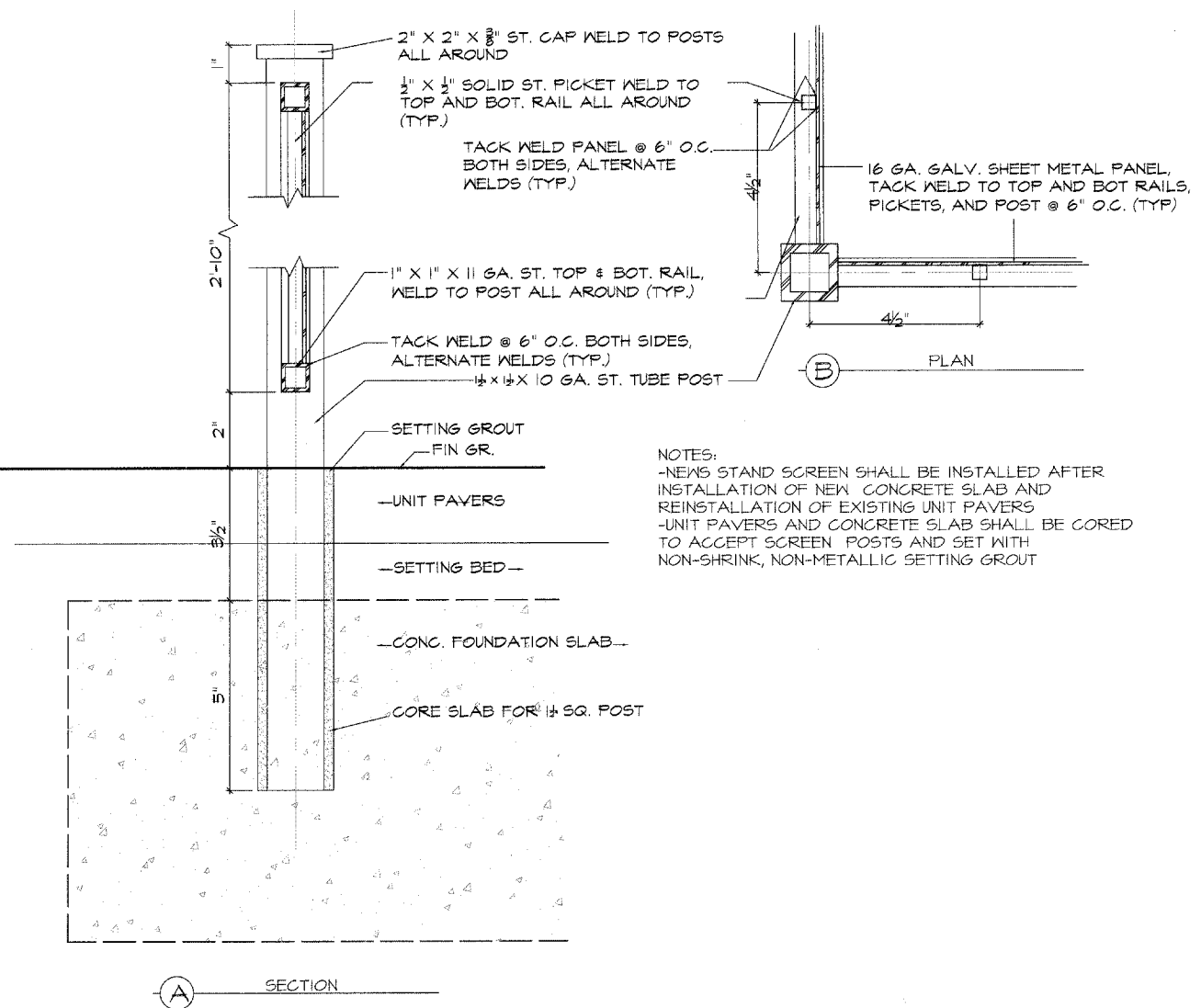
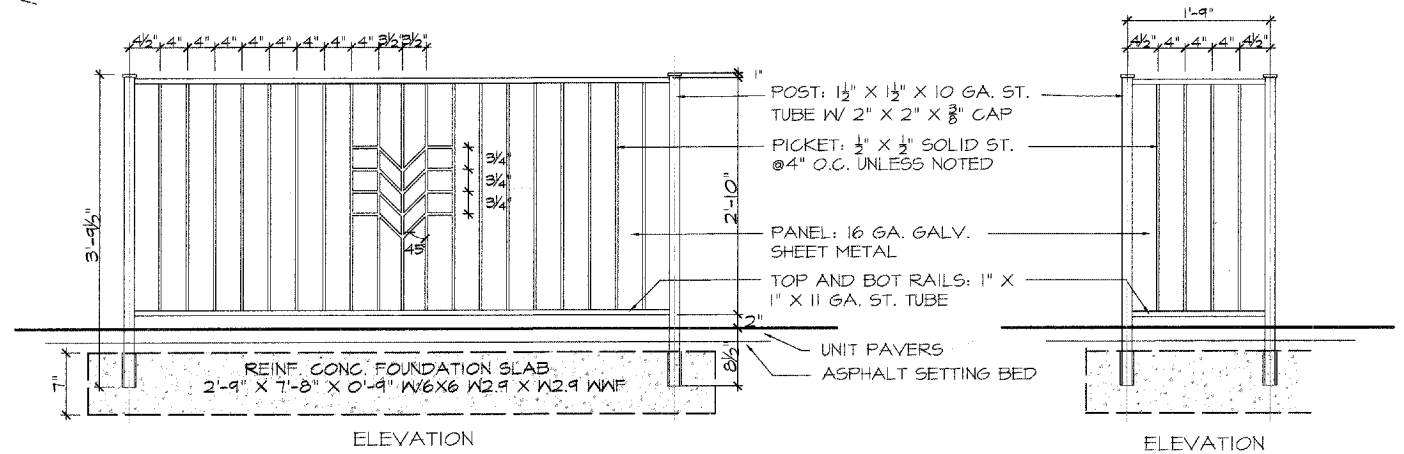


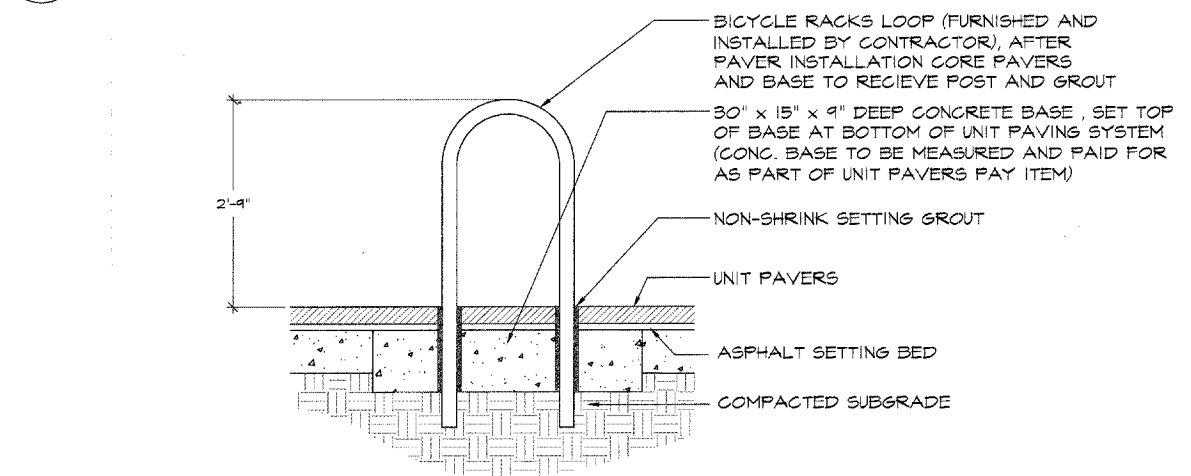
FA.U. R.T.E.	SECTION	COUNTY	SHEET NO.	SHEET NO.
1340	06-00048-00-RS	COOK	36	33
MISCELLANEOUS DETAILS				
ILLINOIS				



NOTES:  
 -POST, TOP AND BOT. RAILS & PICKETS TO BE FULL WELD ALL AROUND, GALVANIZE AFTER FABRICATION  
 -TACK WELD PANEL TO TOP & BOT. RAILS AND PICKETS (MAX SPACING 6"  
 -PRIME & FINISH COATS PER SPECS



**1 NEWS STAND SCREEN DETAIL**  
 No Scale



**2 BICYCLE RACKS DETAIL**  
 No Scale

PLANS PREPARED BY:  
**GEWALT HAMILTON ASSOCIATES, INC.**  
 Consulting Engineers & Surveyors  
 850 Forest Edge Drive  
 Vernon Hills, IL 60061  
 (847) 478-9700  
 (847) 478-9700 Fax

REVISIONS	
NAME	DATE

ILLINOIS DEPARTMENT OF TRANSPORTATION  
 MISC. DETAILS

BUSINESS DISTRICT IMPROVEMENTS  
 TOUHY AVE. AND CRAWFORD AVE.  
 SECTION # 06 - 00048 - 00 - RS

SCALE: N.T.S.  
 DATE: 11-2-06

DRAWN BY: TEB  
 DESIGNED BY: SJP  
 CHECKED BY: JCG

**Land Design Collaborative**  
 incorporated

5142 Main Street  
 Skokie, Illinois 60077  
 (847) 329-9777  
 Fax (847) 329-9779