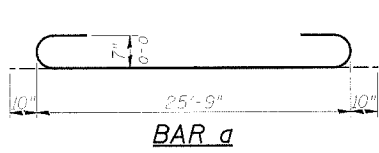
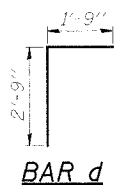


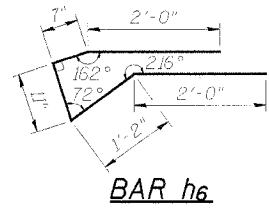
DATE	SECTION	COUNTY	TITLE	SHEET
10/67	99-00119-00-BR	JO DAVIESS	3	6
FED. ROAD DIST. NO. 7		ILLINOIS	FED. AID PROJECT - FAS. 1067	
STRUCTURAL SHEET 2 OF 2				



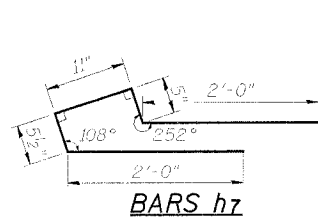
BAR a



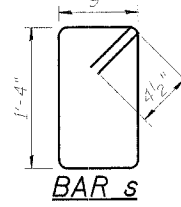
BAR d



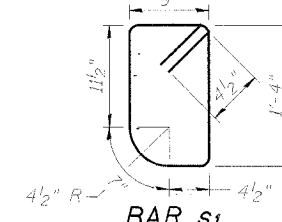
BAR h6



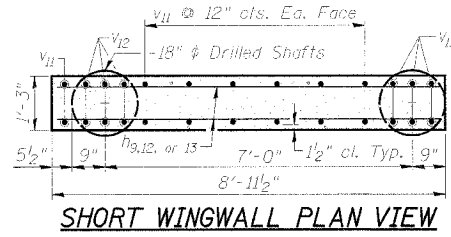
BARS h7



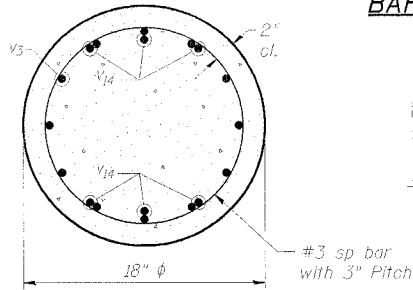
BAR s



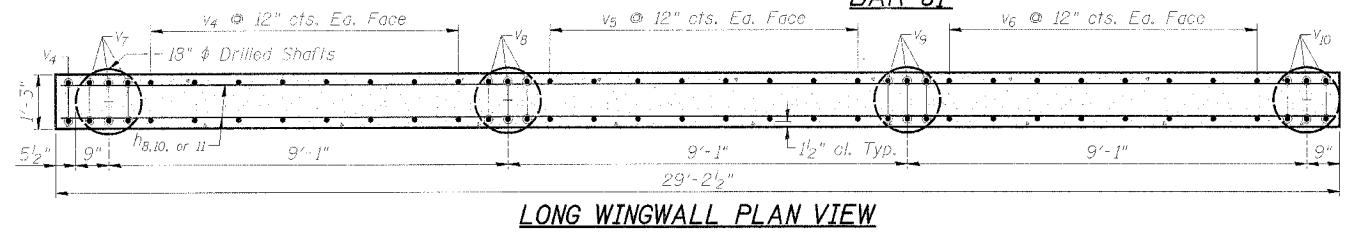
BAR s1



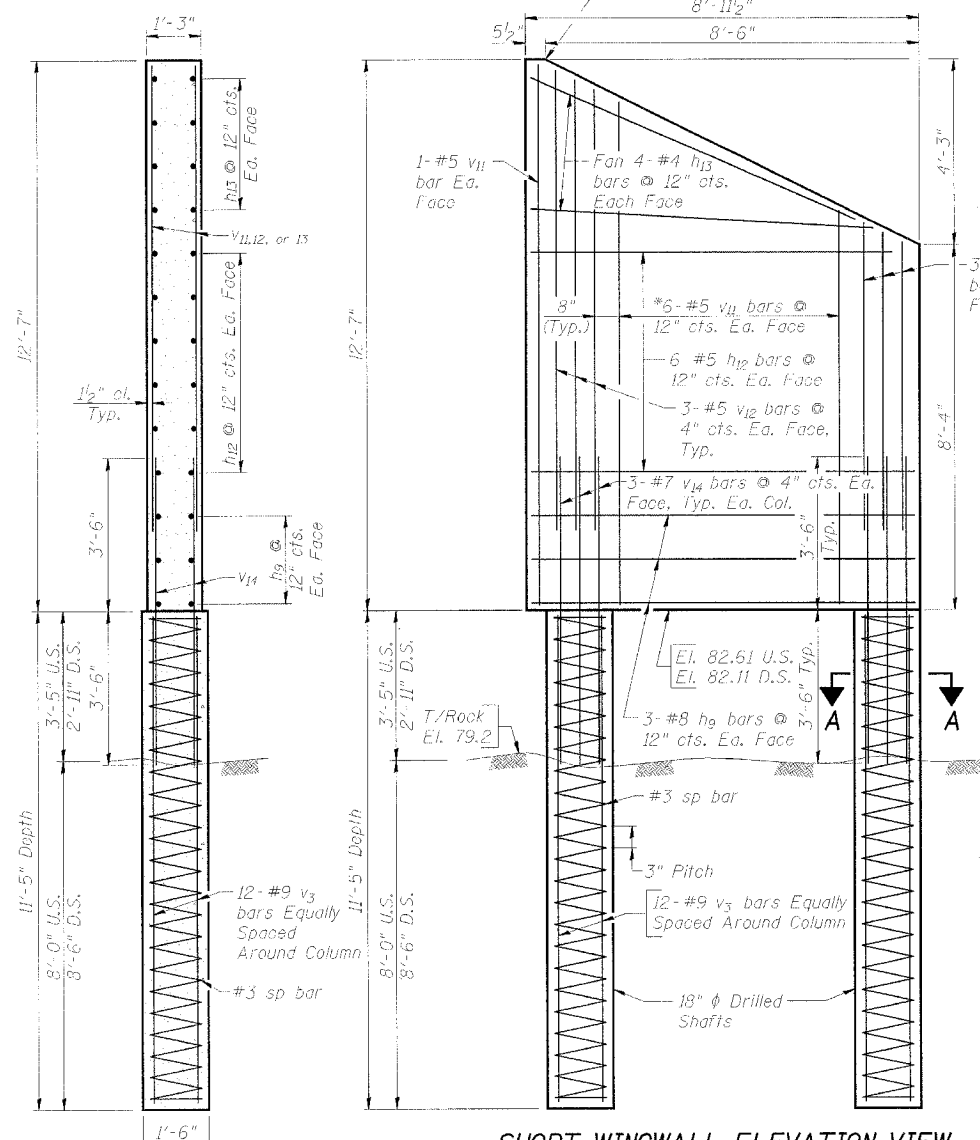
SHORT WINGWALL PLAN VIEW



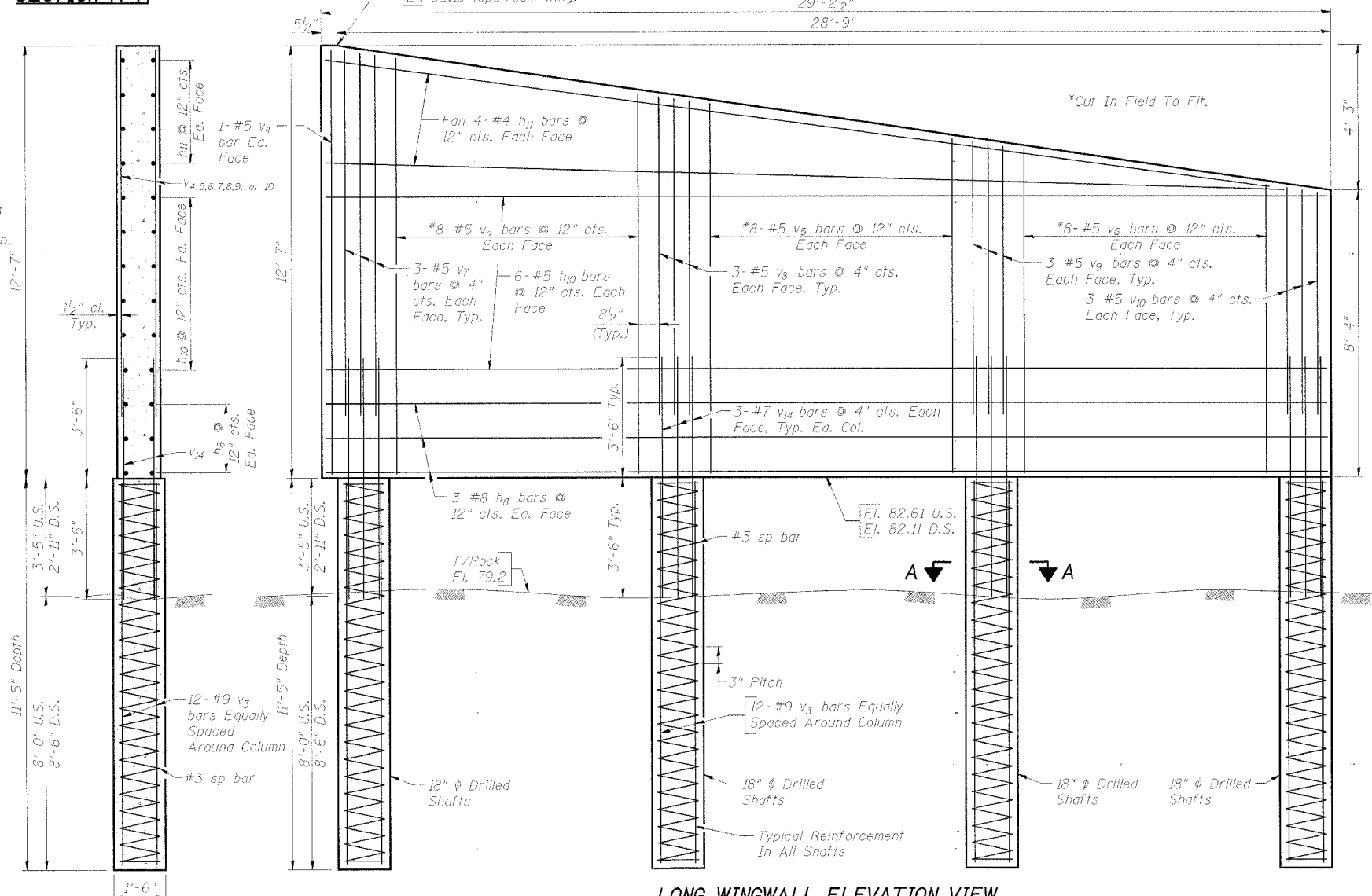
SECTION A-A



LONG WINGWALL PLAN VIEW



SHORT WINGWALL ELEVATION VIEW



LONG WINGWALL ELEVATION VIEW

SHORT WINGWALL END VIEW

LONG WINGWALL END VIEW

STATION 11+93.74  
 DOUBLE BARREL 12'-0" x 8'-0" BOX CULVERT  
 WILLOW ROAD OVER MUDDY PLUM RIVER  
 SECTION 99-00119-00-BR  
 JO DAVIESS COUNTY  
 WHA # 1222D06