

P.A.D. RTE.	SECTION	COUNTY	TOTAL SHEETS	SHEET NO.
**	**	KANKAKEE	83	23

CONTRACT NO. 87314
 FED. ROAD DIST. NO. ILLINOIS
 FED. AID PROJECT
 * LOWE RD. FAU 6206/WALDRON RD. FAU 6184
 ** 02-00284-00-WR & 01-00017-00-FP

TYSON ENGINEERING, INC.
 CONSULTING CIVIL ENGINEERS
 LAND SURVEYORS
 DESIGN FIRM LICENSE #184-001136
 367 SOUTH SCHUYLER AVENUE
 KANKAKEE, ILLINOIS 60901
 PHONE (815) 932-7406

This document and the ideas and designs incorporated herein, as an instrument of professional service, is the property of Tyson Engineering Inc. and is not to be used in whole or in part, for any other project without written authorization of Tyson Engineering Inc.
 Do not scale drawings. Use dimensions only.
 Contractor shall be responsible for verifying all dimensions.
 Information herein and herein is confidential.

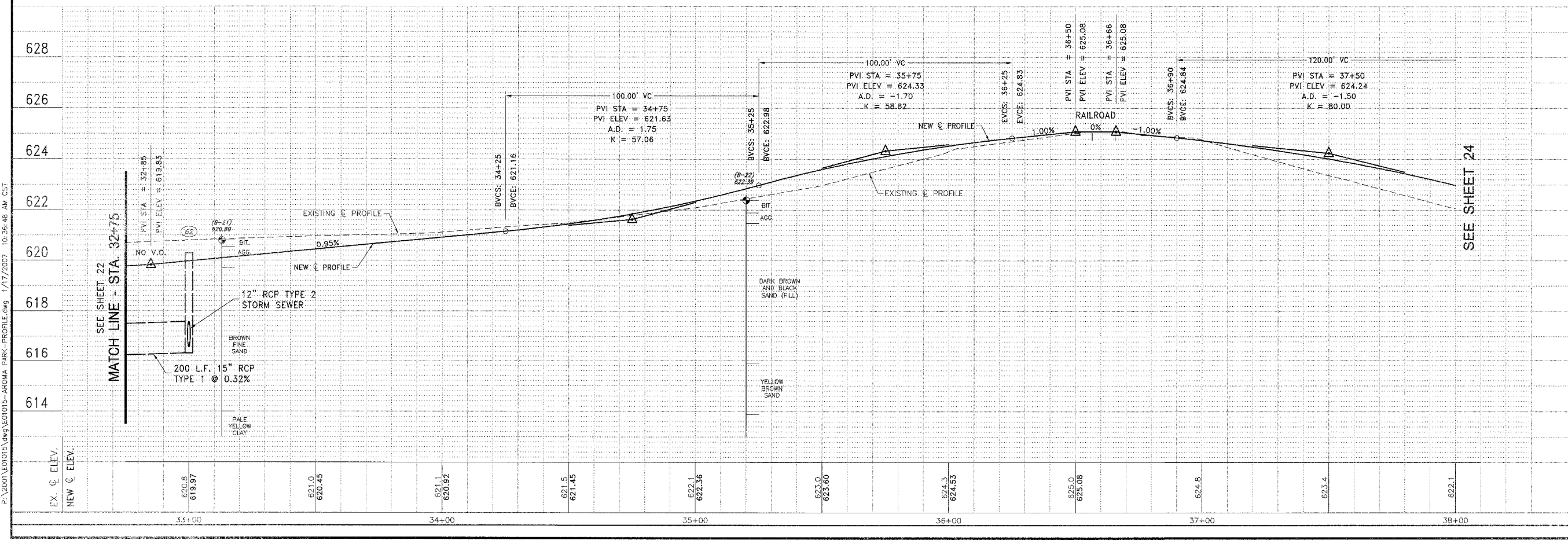
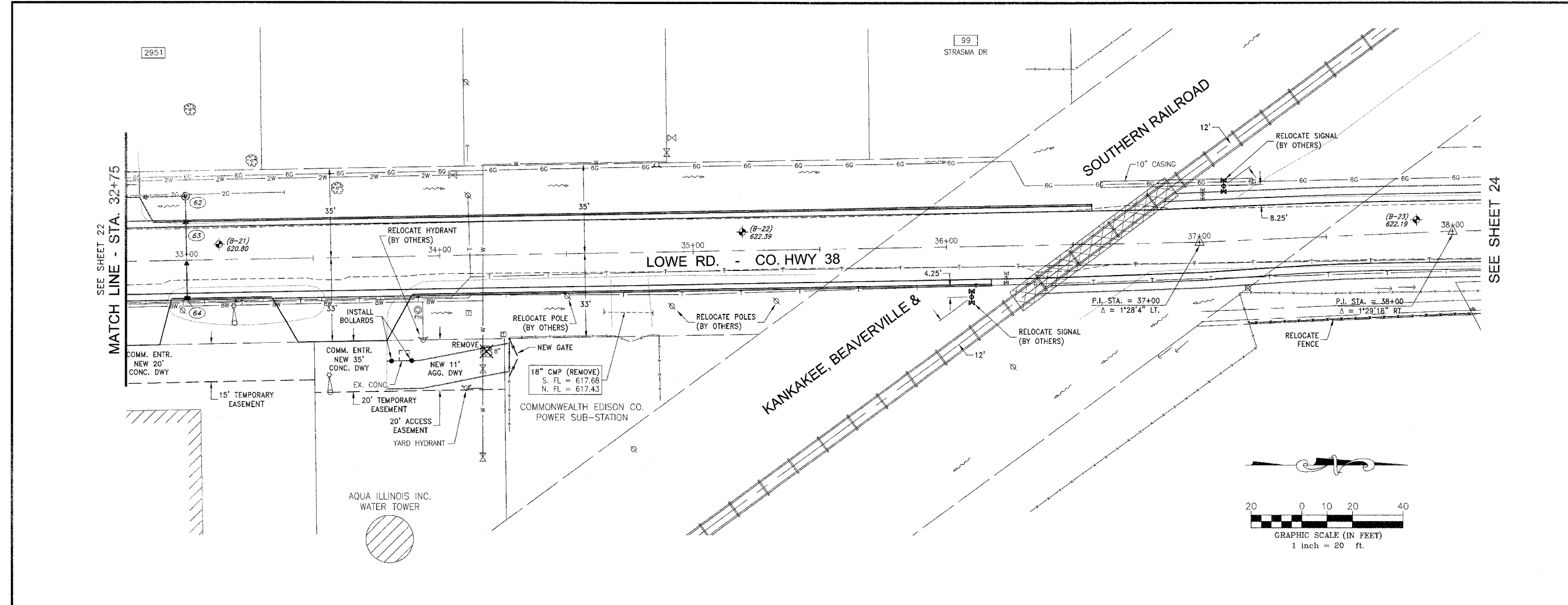
REVISIONS			
NO.	DATE	BY	DESCRIPTION
3	10/24/08	MRG	PER IDOT REVIEW
4	12/29/08	MRG	PER COUNTY REV

LOWE ROAD
 PLAN AND PROFILE
 STA. 32+75 TO STA. 38+00

PROPOSED IMPROVEMENTS FOR
LOWE ROAD
 FROM IL-17 TO WALDRON ROAD
WALDRON ROAD
 FROM CORP. LIMITS TO DIVISION STREET

SECTION
 02-00284-00-WR &
 01-00017-00-FP

DATE: 07/10/06	JOB NO. E01015
SCALE: HORIZ.: 1"=20' VERT.: 1"=2'	FILE NO.
DRAWN BY: MRG	SHEET
CHECKED BY: SRM	23



P:\2009\01015\eng\01015-RR004_PARK-PROFILE.dwg 1/17/2007 10:36:48 AM CST

SEE SHEET 22
 MATCH LINE - STA. 32+75

SEE SHEET 24

SEE SHEET 24

