

**TYSON ENGINEERING, INC.**  
 CONSULTING CIVIL ENGINEERS  
 LAND SURVEYORS  
 DESIGN FIRM LICENSE #184-001136  
 367 SOUTH SCHUYLER AVENUE  
 KANKAKEE, ILLINOIS 60901  
 PHONE (815) 932-7406

This document and the ideas and designs incorporated herein, as an instrument of professional service, is the property of Tyson Engineering Inc. and is not to be used in whole or in part, for any other project without written authorization of Tyson Engineering Inc.  
 Do not scale drawings. Use dimensions only.  
 Contractor shall be responsible for verifying all dimensions.  
 Information herein and herein is confidential.

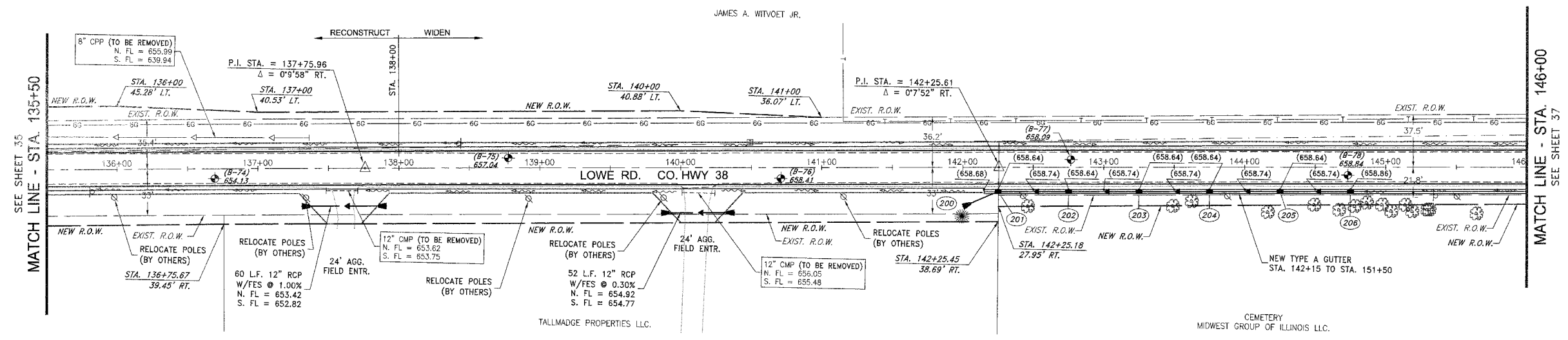
| REVISIONS |          |     |                   |
|-----------|----------|-----|-------------------|
| NO.       | DATE     | BY  | DESCRIPTION       |
| 3         | 10/24/06 | MRG | PER IDOT REVIEW   |
| 4         | 12/29/06 | MRG | PER COUNTY REVIEW |

LOWE ROAD  
 PLAN AND PROFILE  
 STA. 135+50 TO STA. 146+00

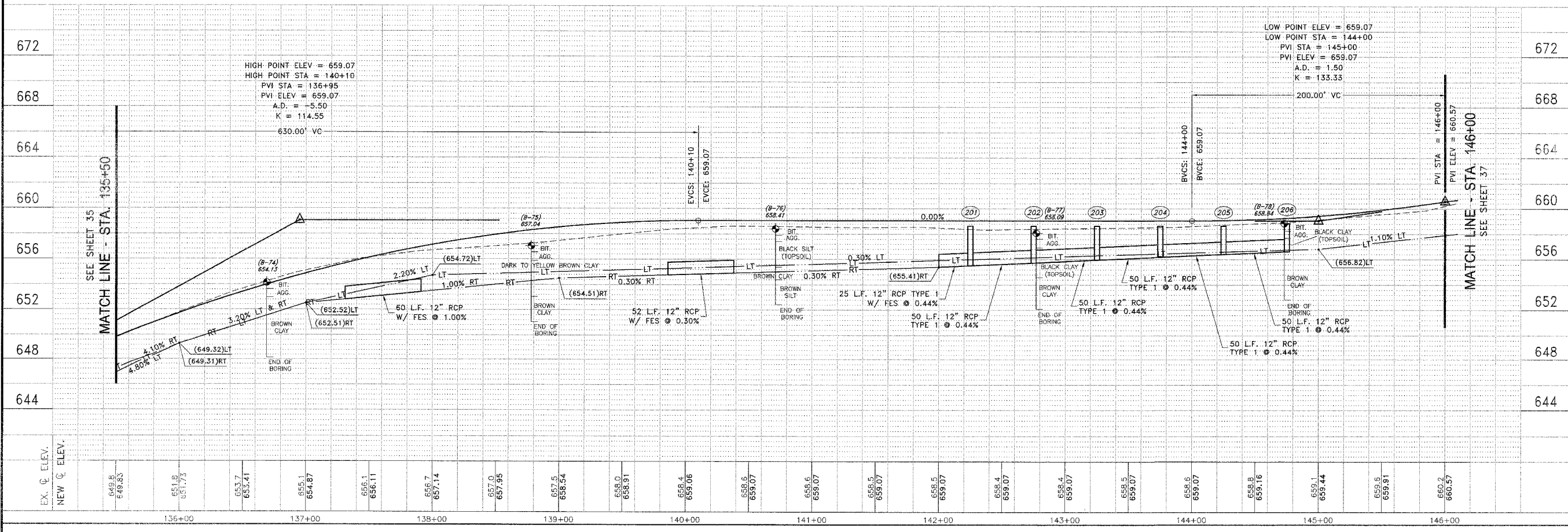
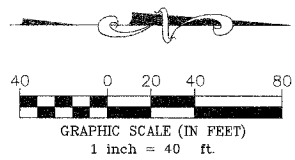
PROPOSED IMPROVEMENTS FOR  
**LOWE ROAD**  
 FROM IL-17 TO WALDRON ROAD  
**WALDRON ROAD**  
 FROM CORP. LIMITS TO DIVISION STREET

SECTION  
 02-00284-00-WR &  
 01-00017-00-FP

|                      |                |
|----------------------|----------------|
| DATE: 07/10/06       | JOB NO. E01015 |
| SCALE: HORZ.: 1"=40' | FILE NO.       |
| VERT.: 1"=4'         |                |
| DRAWN BY: MRG        | SHEET          |
| CHECKED BY: SRM      | <b>34</b>      |
|                      | 83             |



| STORM SEWER STRUCTURE SCHEDULE |             |                                  |  |
|--------------------------------|-------------|----------------------------------|--|
| 200)                           | STA: 142+00 | 28' RT                           | 2' DIA. TYPE A INLET, TYPE 9 FRAME & GRATE |
|                                |             | 12" FES                          | EOP = 655.41                               |
|                                |             | 200-201: 25 L.F. 12" RCP @ 0.44% | 12" N. FL IN = 656.18                      |
|                                |             |                                  | 12" S. FL OUT = 656.18                     |
| 201)                           | STA: 142+25 | 17.5' RT                         | 2' DIA. TYPE A INLET, TYPE 9 FRAME & GRATE |
|                                |             | 12" N. FL IN = 658.64            | EOP = 658.64                               |
|                                |             | 12" S. FL OUT = 655.52           | 12" N. FL IN = 655.52                      |
|                                |             | 201-202: 50 L.F. 12" RCP @ 0.44% | 12" S. FL OUT = 656.18                     |
| 202)                           | STA: 142+75 | 17.5' RT                         | 2' DIA. TYPE A INLET, TYPE 9 FRAME & GRATE |
|                                |             | 12" N. FL IN = 658.64            | EOP = 658.64                               |
|                                |             | 12" S. FL OUT = 655.74           | 12" N. FL IN = 655.74                      |
|                                |             | 202-203: 50 L.F. 12" RCP @ 0.44% | 12" S. FL OUT = 655.74                     |
| 203)                           | STA: 143+25 | 17.5' RT                         | 2' DIA. TYPE A INLET, TYPE 9 FRAME & GRATE |
|                                |             | 12" N. FL IN = 658.84            | EOP = 658.84                               |
|                                |             | 12" S. FL OUT = 655.96           | 12" N. FL IN = 655.96                      |
|                                |             | 203-204: 50 L.F. 12" RCP @ 0.44% | 12" S. FL OUT = 655.96                     |
| 204)                           | STA: 143+75 | 17.5' RT                         | 2' DIA. TYPE A INLET, TYPE 9 FRAME & GRATE |
|                                |             | 12" N. FL IN = 658.64            | EOP = 658.64                               |
|                                |             | 204-205: 50 L.F. 12" RCP @ 0.44% | 12" N. FL IN = 656.18                      |
|                                |             |                                  | 12" S. FL OUT = 656.18                     |
| 205)                           | STA: 144+25 | 17.5' RT                         | 2' DIA. TYPE A INLET, TYPE 9 FRAME & GRATE |
|                                |             | 12" N. FL IN = 658.64            | EOP = 658.64                               |
|                                |             | 205-206: 50 L.F. 12" RCP @ 0.44% | 12" N. FL IN = 656.40                      |
|                                |             |                                  | 12" S. FL OUT = 656.40                     |
| 206)                           | STA: 144+75 | 17.5' RT                         | 2' DIA. TYPE A INLET, TYPE 9 FRAME & GRATE |
|                                |             | 12" N. FL IN = 658.84            | EOP = 658.84                               |
|                                |             | 12" S. FL OUT = 656.62           | 12" N. FL IN = 656.62                      |



P:\2006\01015\dwg\01015-CH-38-PROFILE.dwg 1/17/2007 1:22:16 PM CST