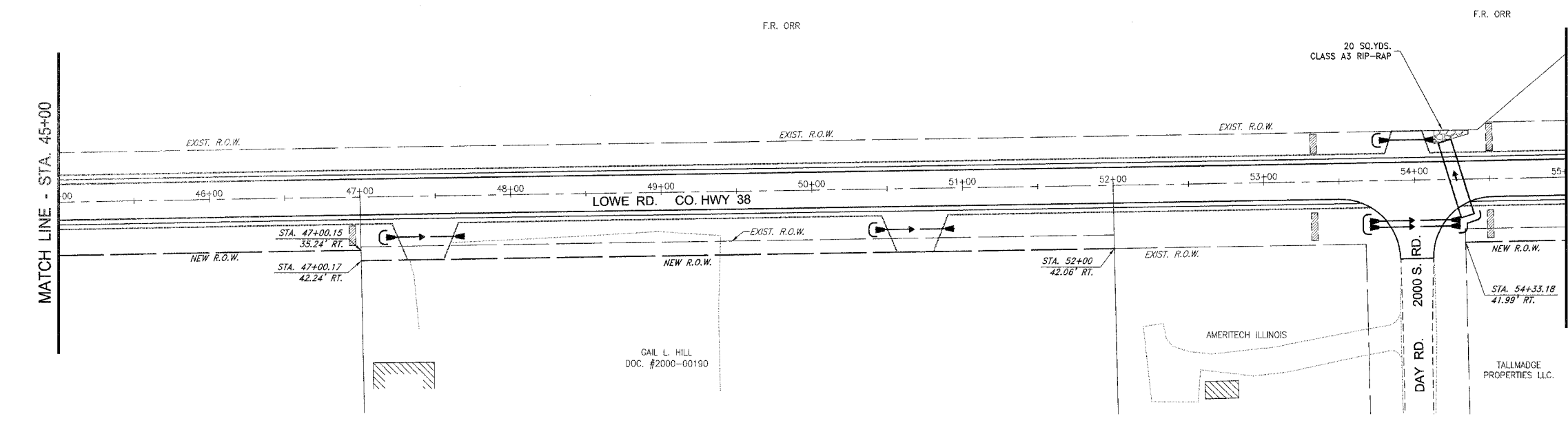


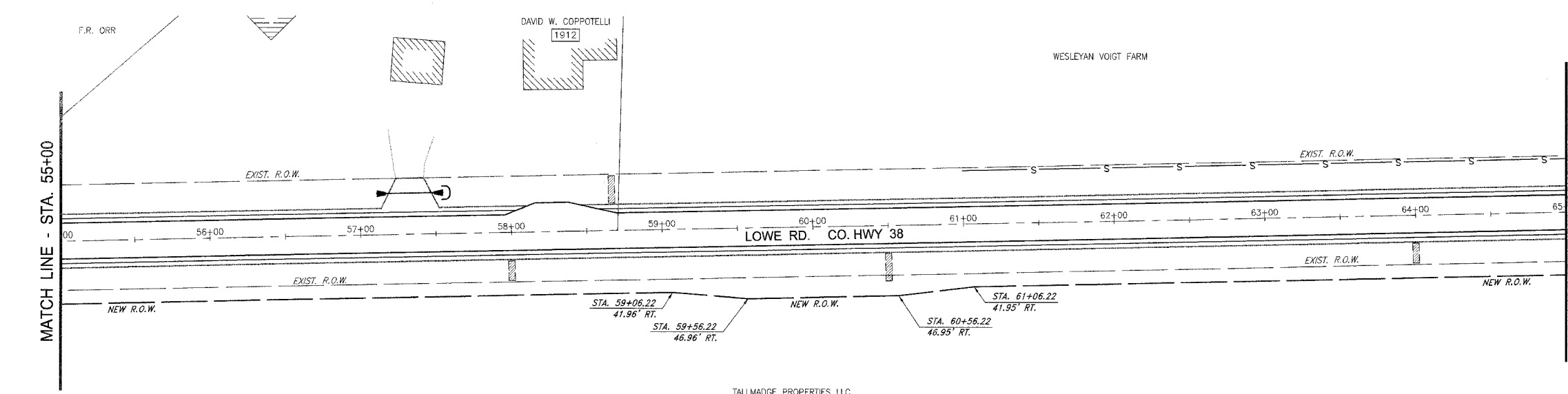
EROSION CONTROL LEGEND

- NEW INLET
- NEW MANHOLE
- ▼ NEW FLARED END SECTION
- INLET AND PIPE PROTECTION
- CULVERT INLET PROTECTION
- ▨ STRAW BALE DITCH CHECK
- PERIMETER EROSION BARRIER
- ▨ RIP-RAP
- ▨ GEOTEXTILE EROSION CONTROL FABRIC

MATCH LINE - STA. 45+00



MATCH LINE - STA. 55+00



MATCH LINE - STA. 65+00
SEE SHEET 41

FAU. DIST.	SECTION	COUNTY	TOTAL SHEETS	SHEET NO.
**	**	KANKAKEE	83	38

CONTRACT NO. 87314
 ILLINOIS FED. AID PROJECT
 * LOWE RD. FAU 6209/WALDRON RD. FAU 6184
 ** 02-00284-00-WR & 01-00017-00-FP

TYSON ENGINEERING, INC.
 CONSULTING CIVIL ENGINEERS
 LAND SURVEYORS
 DESIGN FIRM LICENSE #184-001136
 367 SOUTH SCHUYLER AVENUE
 KANKAKEE, ILLINOIS 60901
 PHONE (815) 932-7406

This document and the ideas and designs incorporated herein, as an instrument of professional service, is the property of Tyson Engineering Inc. and is not to be used in whole or in part, for any other project without written authorization of Tyson Engineering Inc.

Do not scale drawings. Use dimensions only.
 Contractor shall be responsible for verifying all dimensions.
 Information hereon and herein is confidential.

REVISIONS

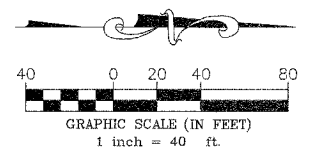
NO.	DATE	BY	DESCRIPTION
3	10/24/06	MRG	PER IDOT REVIEW
4	12/29/06	MRG	PER COUNTY REV

LOWE ROAD
 EROSION CONTROL
 STA. 35+00 TO STA. 65+00

PROPOSED IMPROVEMENTS FOR
LOWE ROAD
 FROM IL-17 TO WALDRON ROAD
WALDRON ROAD
 FROM CORP. LIMITS TO DIVISION STREET

SECTION
 02-00284-00-WR &
 01-00017-00-FP

DATE: 07/10/06	JOB NO. E01015
SCALE: HORZ.: 1"=40' VERT.: N/A	FILE NO.
DRAWN BY: MRG	SHEET
CHECKED BY: SRM	38
	83



P:\2001\020105\05.dwg E01015-CH 38.dwg 1/17/2007 10:46:05 AM CST