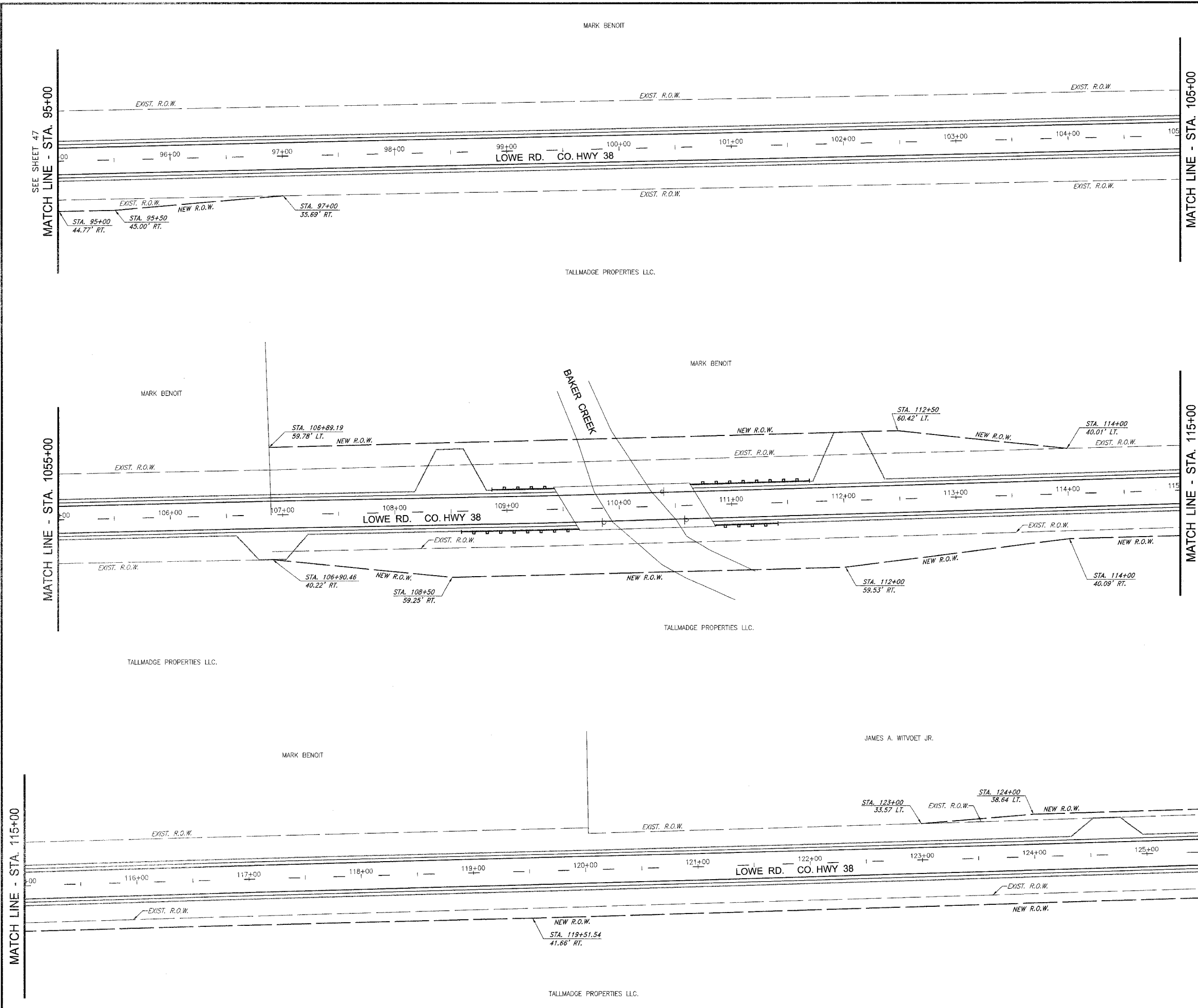


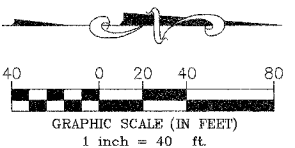
P:\2001\E01015\dwg\E01015-CH 35.dwg 1/17/2007 11:09:44 AM CST



MATCH LINE - STA. 105+00

MATCH LINE - STA. 115+00

MATCH LINE - STA. 125+50  
SEE SHEET 49



FAU DIST.	SECTION	COUNTY	TOTAL SHEETS	SHEET NO.
*	**	KANKAKEE	83	48

CONTRACT NO. B7314  
FED. ROAD DIST. NO. ILLINOIS FED. AID PROJECT  
\* LOWE RD. FAU 6209/WALDRON RD. FAU 6184  
\*\* 02-00284-00-WR & 01-00017-00-FP

**TYSON ENGINEERING, INC.**  
CONSULTING CIVIL ENGINEERS  
LAND SURVEYORS  
DESIGN FIRM LICENSE # 04-001136  
367 SOUTH SCHUYLER AVENUE  
KANKAKEE, ILLINOIS 60901  
PHONE (815) 932-7406

This document and the ideas and designs incorporated herein, as an instrument of professional service, is the property of Tyson Engineering Inc. and is not to be used in whole or in part, for any other project without written authorization of Tyson Engineering Inc.  
Do not scale drawings. Use dimensions only. Contractor shall be responsible for verifying all dimensions.  
Information herein and herein is confidential.

REVISIONS				
NO.	DATE	BY	DESCRIPTION	REVIEW
3	10/24/06	MRG	PER IDOT REVIEW	
4	12/29/06	MRG	PER COUNTY REV	

LOWE ROAD STRIPING AND SIGNAGE PLAN  
STA. 95+00 TO STA. 125+50

PROPOSED IMPROVEMENTS FOR  
**LOWE ROAD**  
FROM IL-17 TO WALDRON ROAD  
**WALDRON ROAD**  
FROM CORP. LIMITS TO DIVISION STREET

SECTION  
02-00284-00-WR &  
01-00017-00-FP

DATE: 07/10/06	JOB NO. E01015
SCALE: HORZ.: 1"=40' VERT.: N/A	FILE NO.
DRAWN BY: MRG	SHEET
CHECKED BY: SRM	<b>46</b>
	83